

Plot for sale for the construction of a building

Ref: PH102559



Tordera / Maresme/Barcelona Costa Norte

Tordera is located on the border between the Maresme and La Selva, its location is excellent, as it is halfway between the city of Barcelona and Girona. Less than 10 minutes by car to the beach and the mountains. Flat plot of 703 m² located in the centre of Tordera. It is located a few metres from the main services, shops and schools. Very well communicated, quick access to the N-II and the C-32 motorway. Permitted buildable area of 1.473 m² distributed in basement floor destined as parking for 26 parking spaces, ground floor for commercial premises + 3 floors, minimum 14 dwellings. Ideal for building new dwellings in the centre, it is also a residential area with unobstructed views.

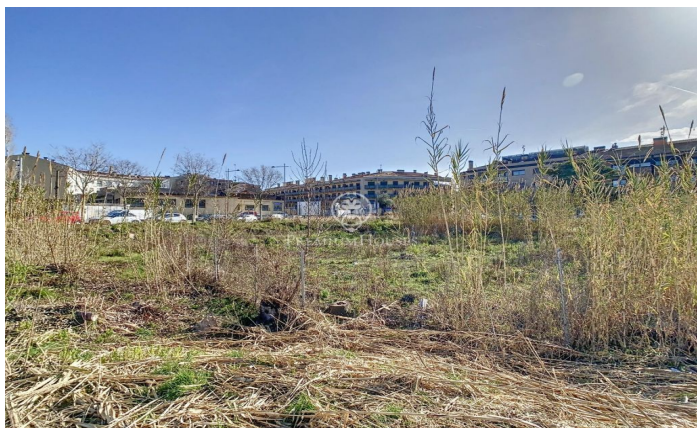
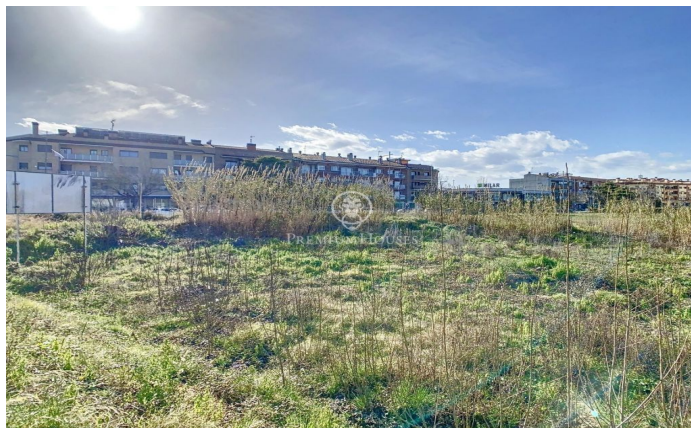
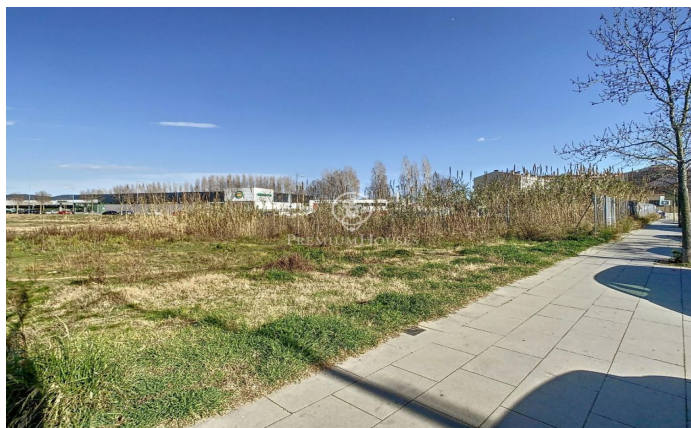
350.000 €

703 m² земельный
участок



PREMIUMHOUSES
Excellence in Real Estate

Avda. Maresme, 143 Mataró
Tel: +34 93 798 88 99





PREMIUMHOUSES
Excellence in Real Estate

Avda. Maresme, 143 Mataró
Tel: +34 93 798 88 99



Contact us for more information or to arrange a viewing

Tel: +34 93 798 88 99

info@premiumhouses.com

www.premiumhouses.es

