

Penthouse with large terrace in the center of Sitges

Ref: PHS100681



Centre / Sitges

This magnificent duplex penthouse in the center of Sitges has a terrace of more than 80 meters with unobstructed views. It has an elevator to move between the two floors, which facilitates movement within the house. It is in an excellent state of conservation. We access the house through an elevator with a key that leads to a living room with a fireplace and direct access to the large terrace. From the living room we access an office kitchen that also has access to the terrace. Both rooms enjoy great tranquility throughout the day as they are on an elevated floor. The terrace has a lot of space to be able to enjoy throughout practically the whole year. This floor also has a courtesy toilet. On the lower floor we have the night area. Along a corridor that distributes the different spaces we find 3 exterior double rooms with access to a terrace and an interior single room. The master bedroom is en-suite and has a walk-in closet and a great size. There is another complete bathroom that serves the rest of the rooms. All have fitted wardrobes. The center of Sitges allows you to have all the services close without having to move much from the moment you leave home. However, we do not give up quick access to the highway to move to the airport or Barcelona.

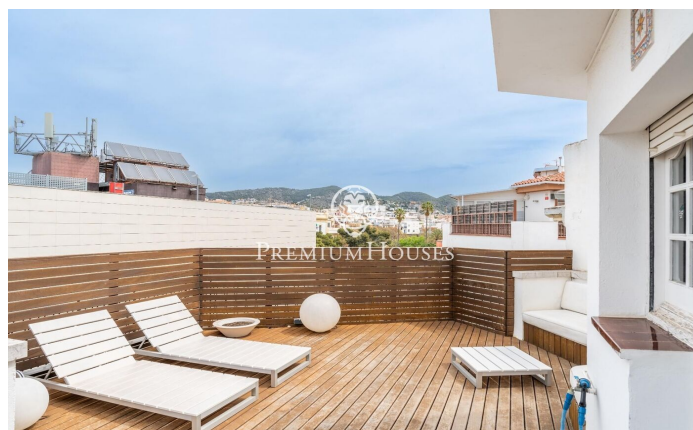
850.000 €

190 m²
4 ???????
2 ?????? ??????
?????????????
??????????
?????
????????????????
????????
?????
????????
????????????? ??????



PREMIUMHOUSES
Excellence in Real Estate

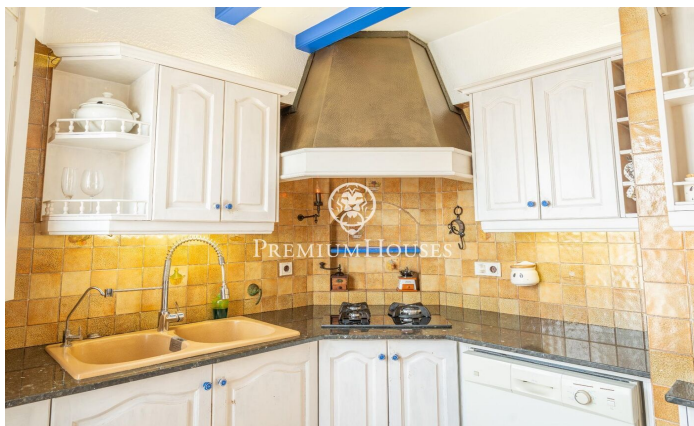
Avda. Camí dels Capellans, 81
Local 3 Sitges
Tel: +34 93 809 72 40





PREMIUMHOUSES
Excellence in Real Estate

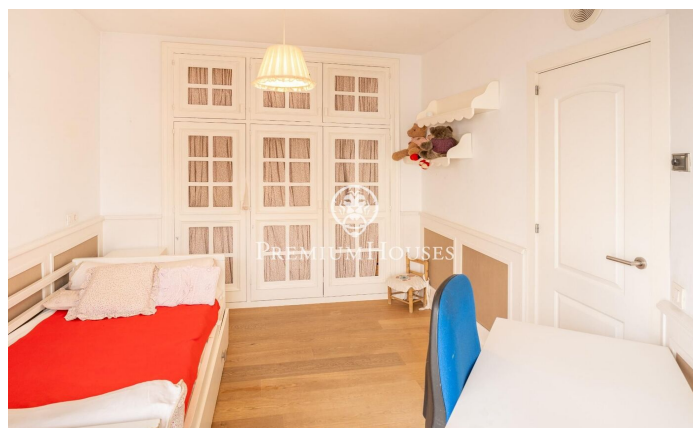
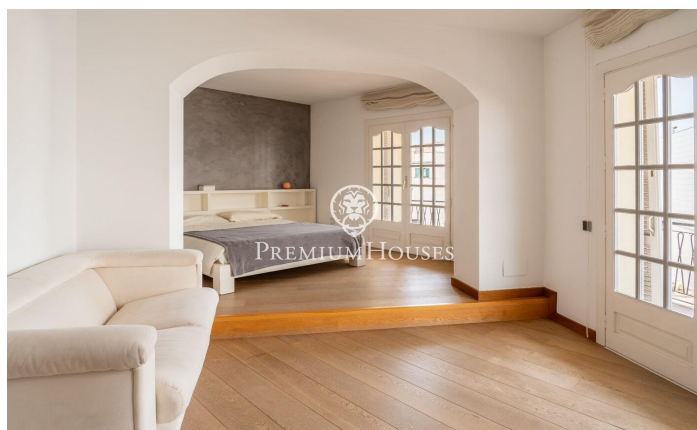
Avda. Camí dels Capellans, 81
Local 3 Sitges
Tel: +34 93 809 72 40





PREMIUMHOUSES
Excellence in Real Estate

Avda. Camí dels Capellans, 81
Local 3 Sitges
Tel: +34 93 809 72 40



Contact us for more information or to arrange a viewing

Tel: +34 93 809 72 40

sitges@premiumhouses.com

www.premiumhouses.es