



Charming farmhouse in Sant Iscle de Vallalta, Montnegre i el Corredor Natural Park

Ref: PH103538



Sant Iscle de Vallalta / Maresme/Barcelona Costa Norte

Discover this exceptional farmhouse located in the stunning Montnegre area, within the protected natural environment of the park. With a built area of 170 m² and a usable area of 165 m², this property stands out for its good condition and spacious interior, which includes two double bedrooms and one single bedroom. It also has two full bathrooms for added comfort. The privileged location offers panoramic mountain views and invites you to enjoy the outdoors, making this place ideal both as a permanent residence and a holiday getaway. A unique opportunity for those seeking tranquillity without sacrificing comfort.

650.000 €

170 m²

3 комнаты

2 ванные комнаты

30,500 m² земельный
участок

отопление

кладовая

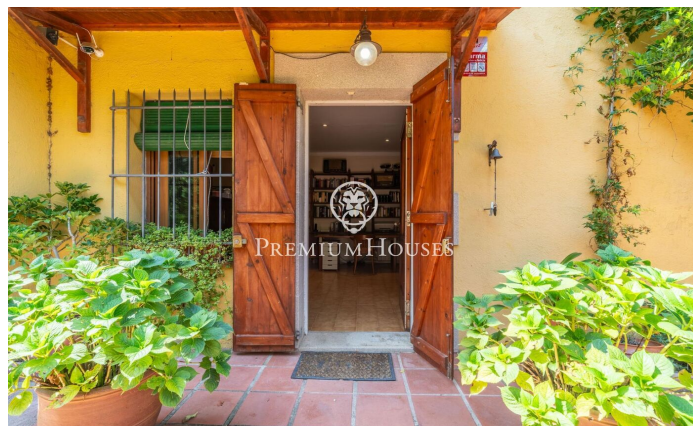
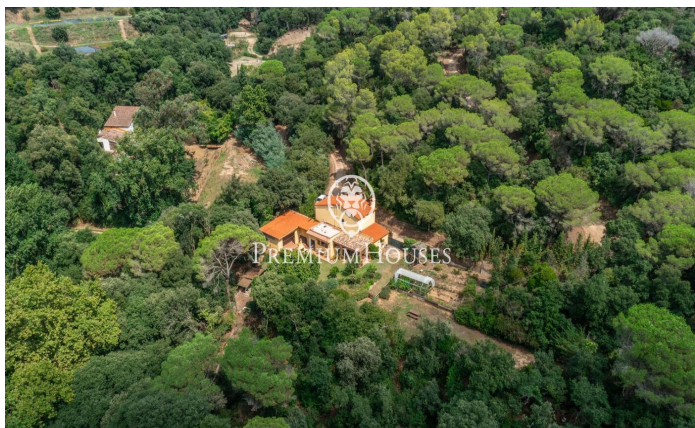
телефон

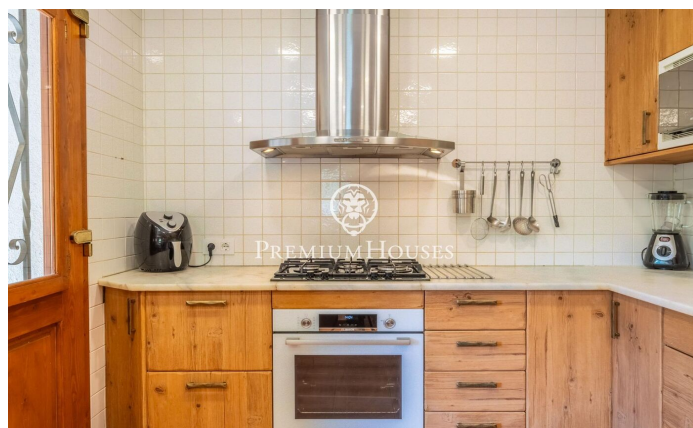
камин



PREMIUMHOUSES
Excellence in Real Estate

Avda. Maresme, 143 Mataró
Tel: +34 93 798 88 99

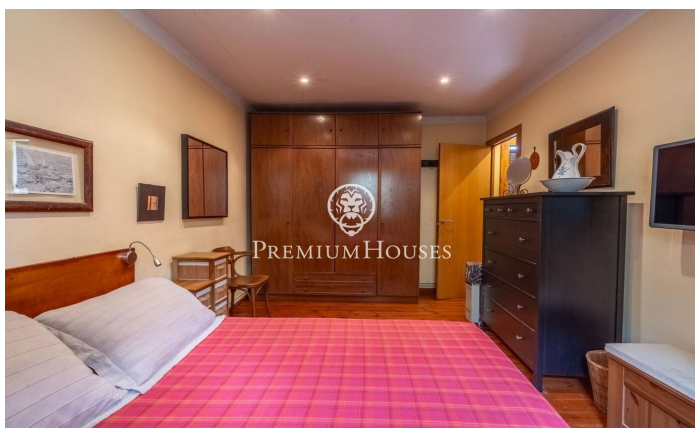
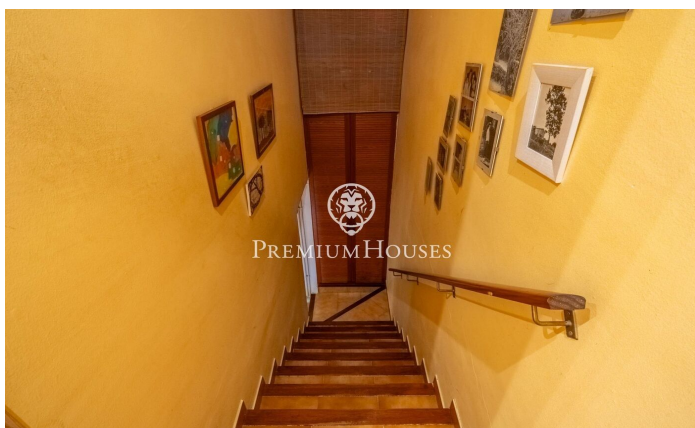
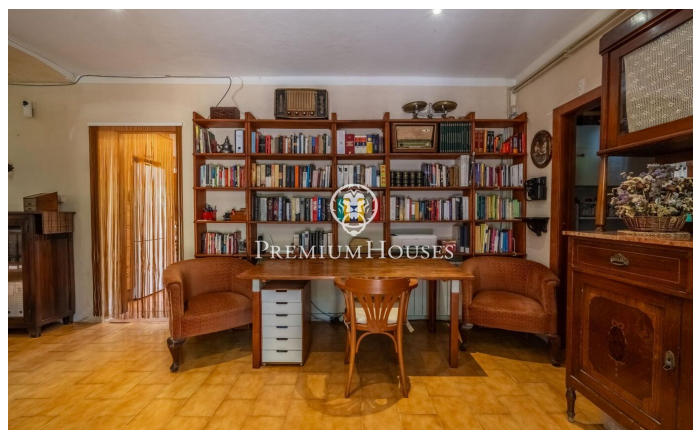






PREMIUMHOUSES
Excellence in Real Estate

Avda. Maresme, 143 Mataró
Tel: +34 93 798 88 99



Contact us for more information or to arrange a viewing

Tel: +34 93 798 88 99

info@premiumhouses.com

www.premiumhouses.es