

Construction has begun; completion is scheduled for the first quarter of 2028

Ref: PH103563



Caldes d'Estrac / Maresme/Barcelona Costa Norte

Discover Residencial Morgana: an exclusive complex of eight newly built semi-detached homes, designed according to the principles of sustainability and circular economy that define Circular Homes' commitment. Located in the highest and most privileged area of the La Indiana residential complex, these homes have been carefully designed to offer the best of Mediterranean style in a unique natural setting. Thanks to their staggered layout, each home enjoys stunning sea views from every room, as well as excellent natural light and optimal ventilation, guaranteed by their triple orientation. The interiors are adapted to different lifestyles, with floor areas ranging from 250 to 260 m². The homes offer spacious living areas and the possibility of choosing between 4 or 5 bedrooms and 3 or 4 bathrooms, responding to the needs of each family. Outside, each home has a private garden and large terraces, ideal for relaxing and enjoying the surroundings. They also include a closed garage, providing comfort and security for residents. The residential complex is completed with a communal swimming pool surrounded by gardens on different levels, creating an exclusive, intimate and relaxing atmosphere. With architecture that blends Catalan tradition with a contemporary and sustainable approach, R...

1.152.570 €

261 m²

5 комнаты

4 ванные комнаты

378 m² земельный участок

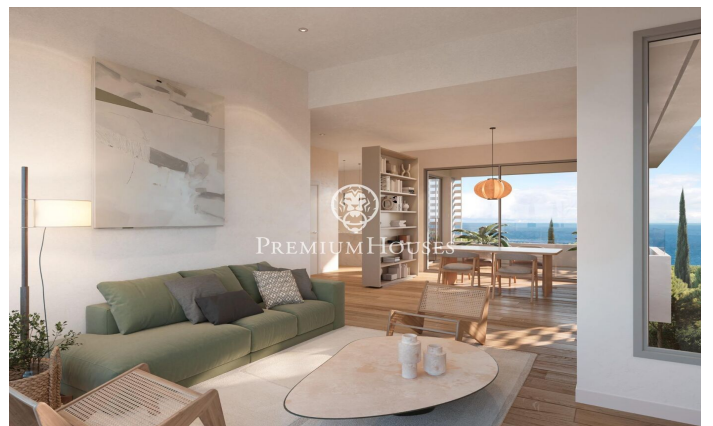
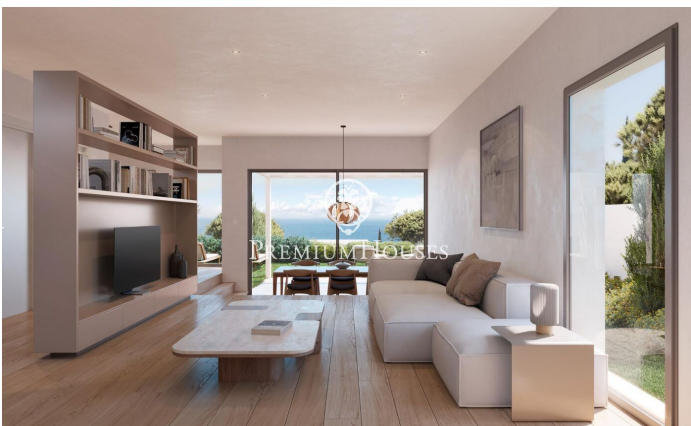
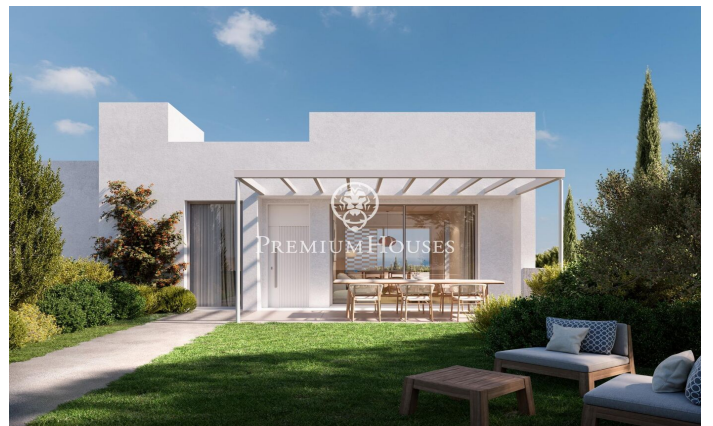
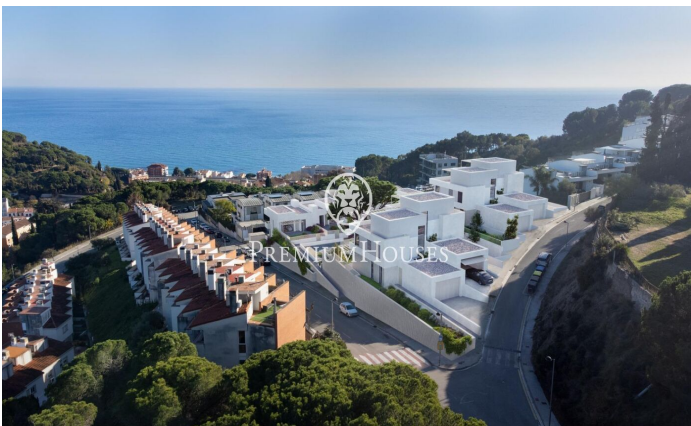
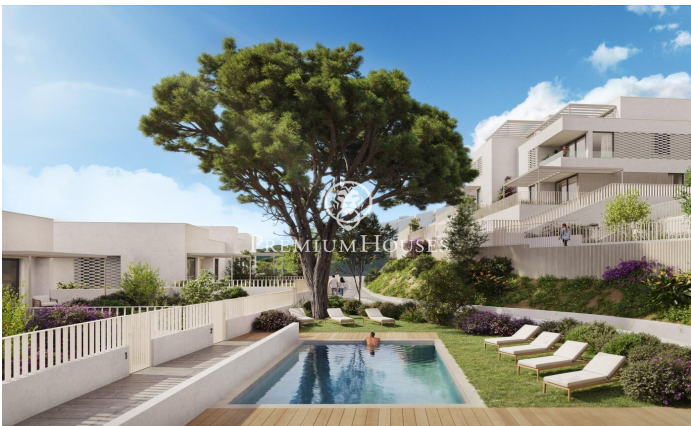
бассейн

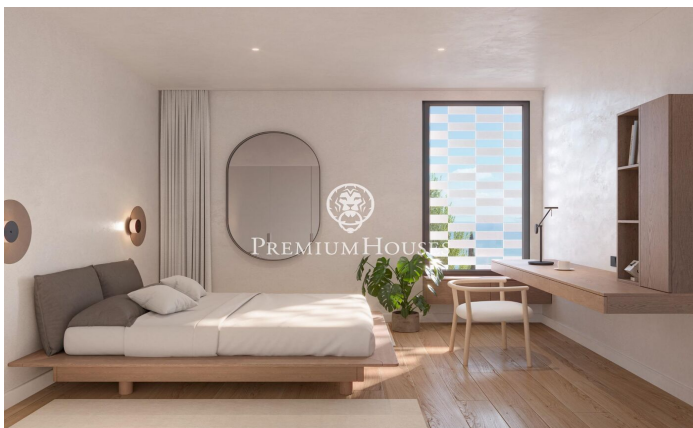
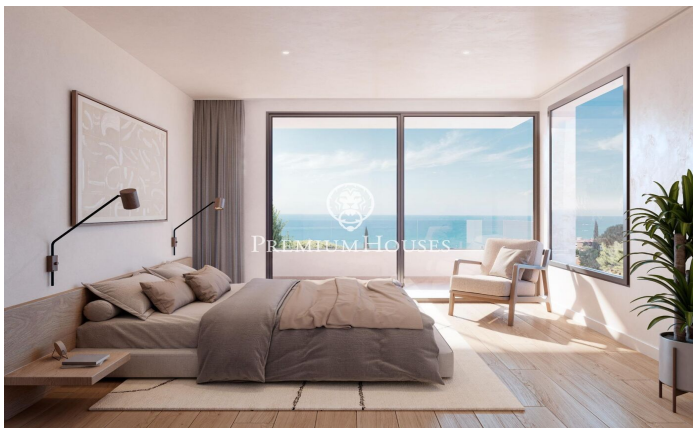
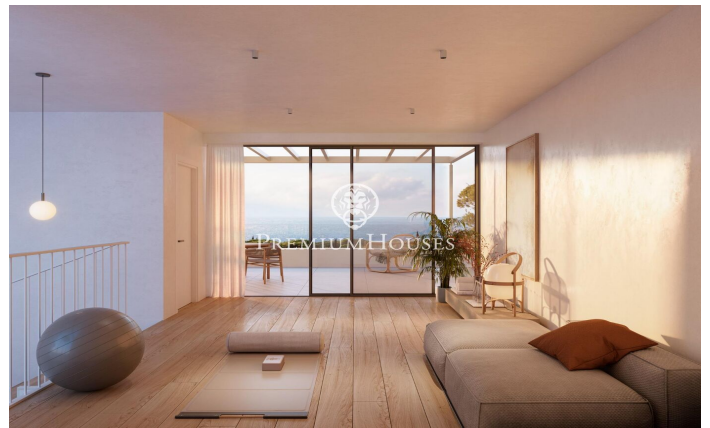
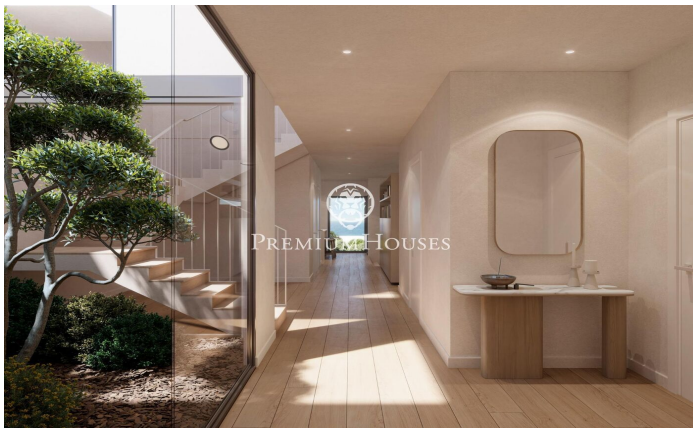
отопление

вид на море

стоянка

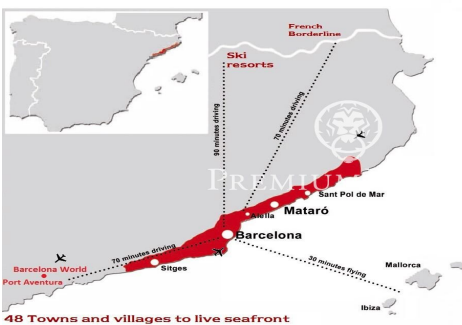
встроенные шкафы







Barcelona Coast, the best place to live
Over 2,500 hours of sun per year



Contact us for more information or to arrange a viewing

Tel: +34 93 798 88 99

info@premiumhouses.com

www.premiumhouses.es