

New development of sustainable homes with sea views in Caldes d'Estrac

Ref: PH103562

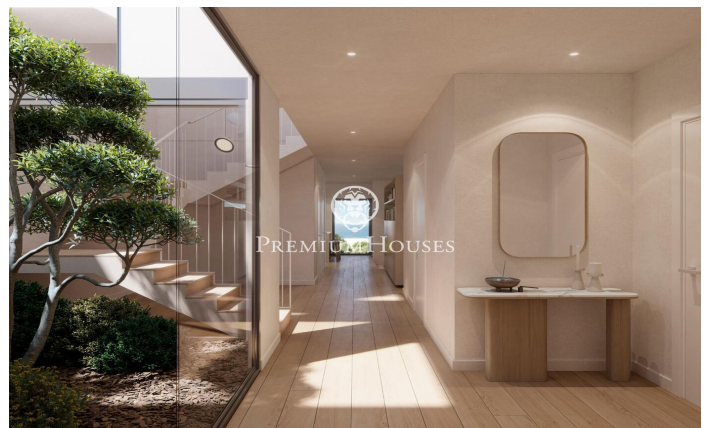
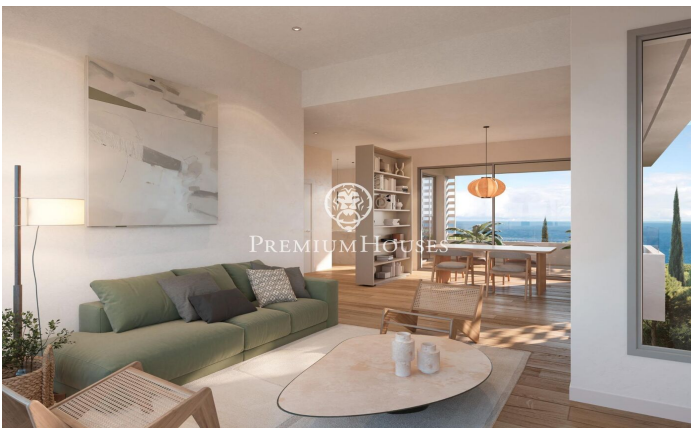


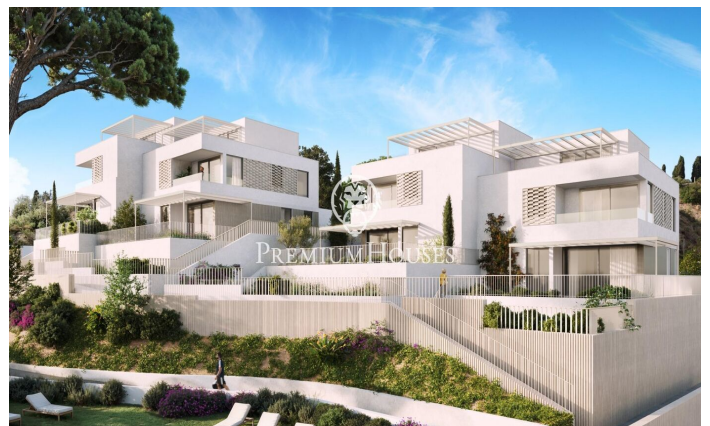
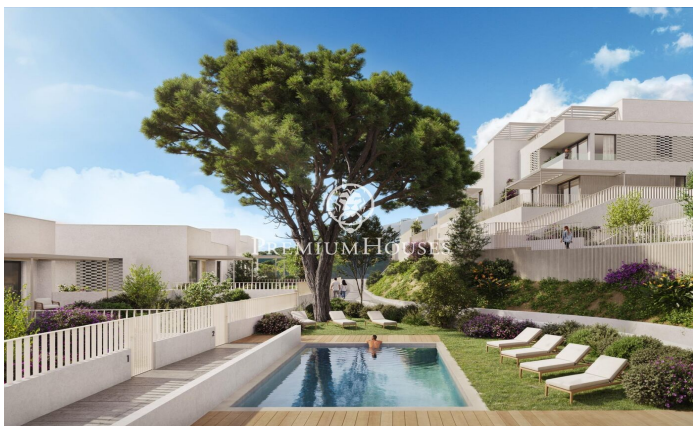
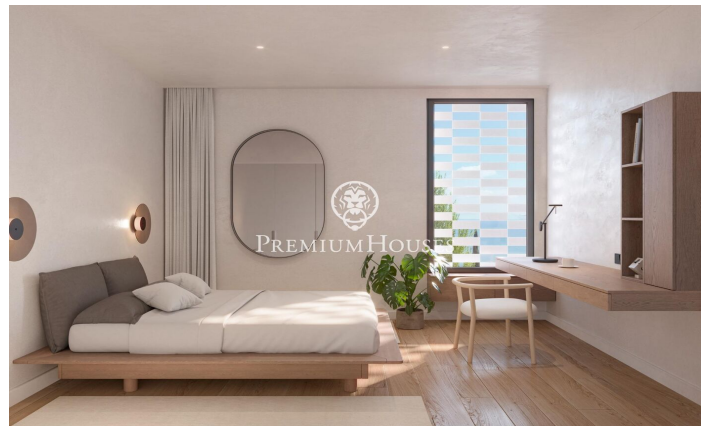
Caldes d'Estrac / Maresme/Barcelona Costa Norte

Discover Residencial Morgana: an exclusive complex of eight newly built semi-detached homes, designed according to the principles of sustainability and circular economy that define Circular Homes' commitment. Located in the highest and most privileged area of the La Indiana residential complex, these homes have been carefully designed to offer the best of Mediterranean style in a unique natural setting. Thanks to their staggered layout, each home enjoys stunning sea views from every room, as well as excellent natural light and optimal ventilation, guaranteed by their triple orientation. The interiors are adapted to different lifestyles, with floor areas ranging from 250 to 260 m². The homes offer spacious living areas and the possibility of choosing between 4 or 5 bedrooms and 3 or 4 bathrooms, responding to the needs of each family. Outside, each home has a private garden and large terraces, ideal for relaxing and enjoying the surroundings. They also include a closed garage, providing comfort and security for residents. The residential complex is completed with a communal swimming pool surrounded by gardens on different levels, creating an exclusive, intimate and relaxing atmosphere. With architecture that blends Catalan tradition with a contemporary and sustainable approach, R...

1.070.170 €

252 m²
4 комнаты
3 ванные комнаты
230 m² земельный участок
бассейн
отопление
вид на море
стоянка
терраса
встроенные шкафы







VIVIENDA A-4

SUPERFICIES	
ÚTIL	CONSTRUÍDA
Planta Sotano	180,00 m ²
Planta Baja	40,00 m ²
Planta Primera	40,00 m ²
Planta Segunda	100,00 m ²
Superficie aproximada	360,00 m ²
Superficie construida	260,00 m ²
Superficie útil	260,00 m ²
Superficie cubierta	180,00 m ²
Superficie jardín	90,00 m ²
Superficie total en parcela	230,00 m ²

LOCALIZACIÓN:
Límite 2º D.º de Barcelonès, Barcelona

DIRECCIÓN:
Límite 2º D.º de Barcelonès y Calle Torrellana

ESCALA 1:500

PLANTA SÓTANO PLANTA BAJA PLANTA PRIMERA

Barcelona Coast, the best place to live
Over 2,500 hours of sun per year

