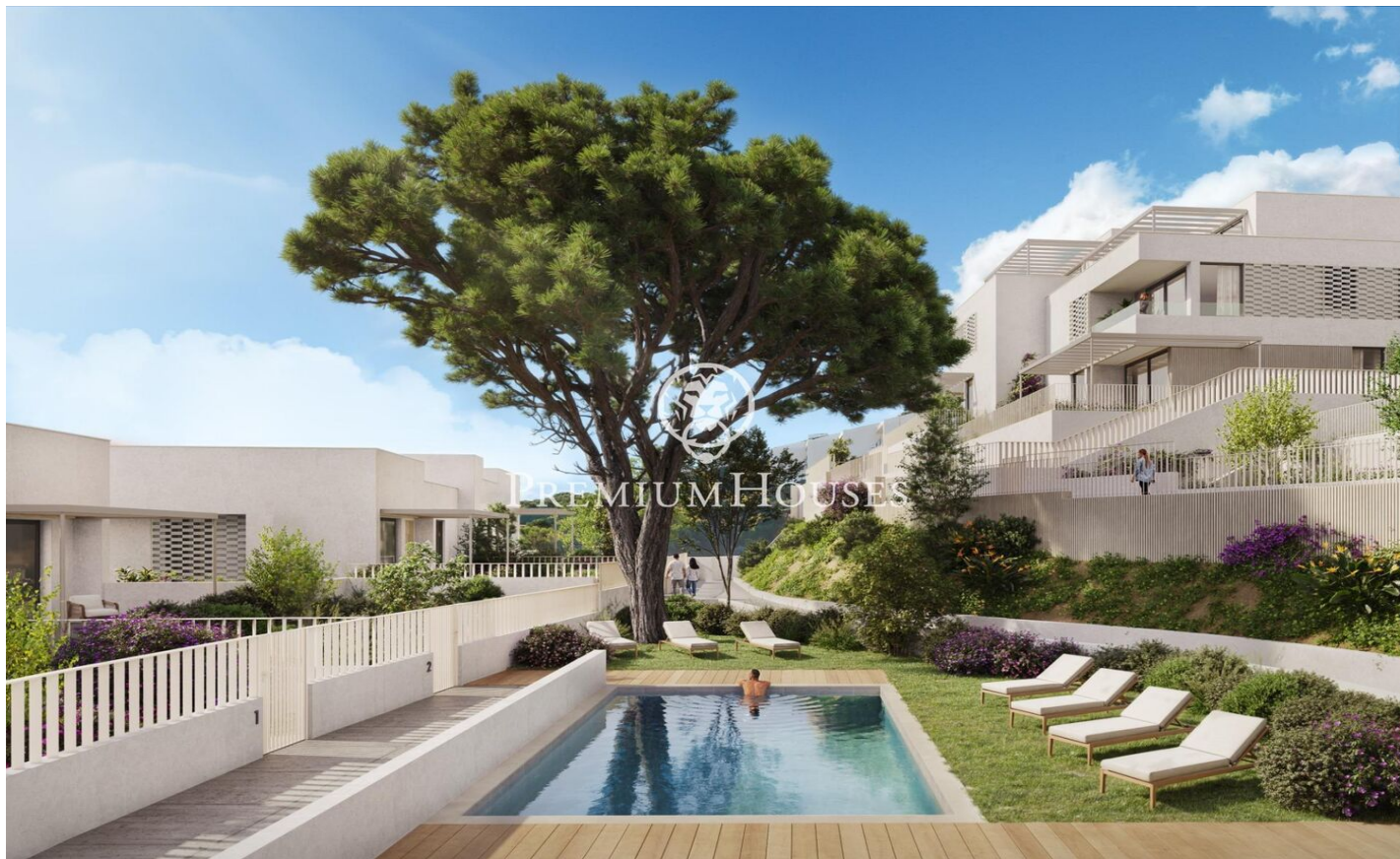


Construction has begun; completion is scheduled
for the first quarter of 2028

Ref: PH103560

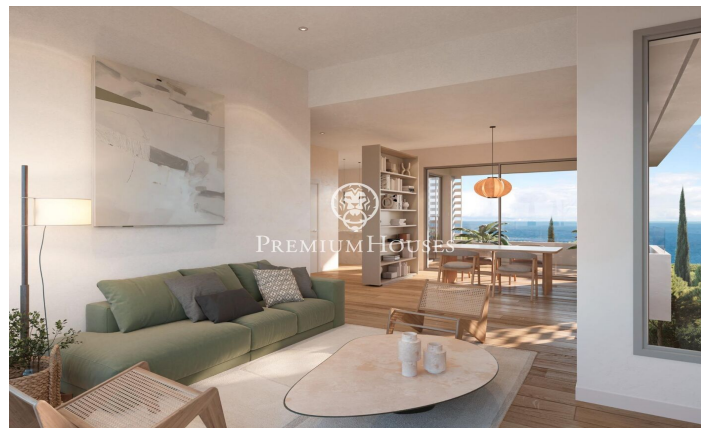
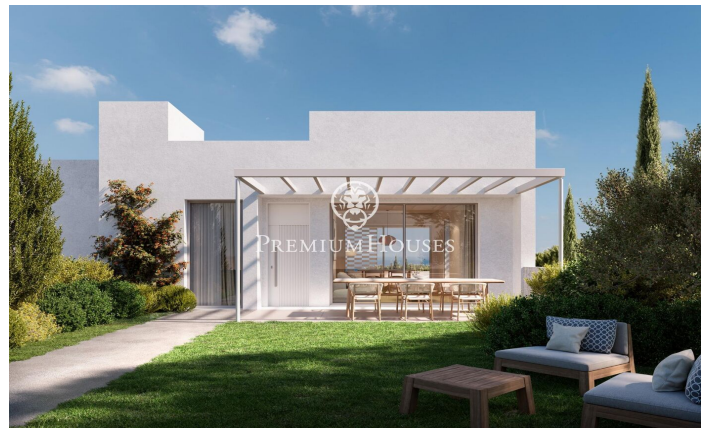
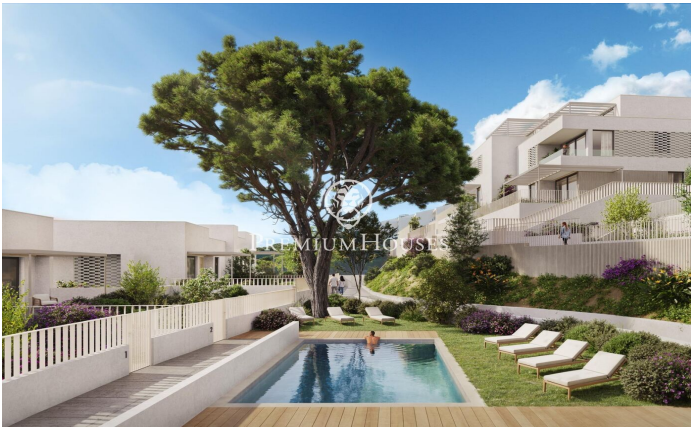


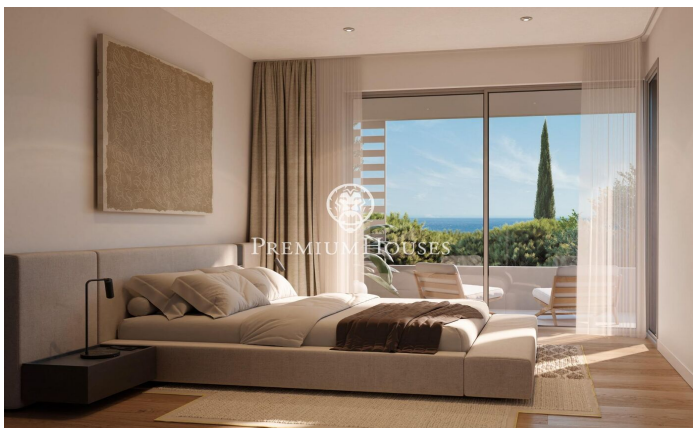
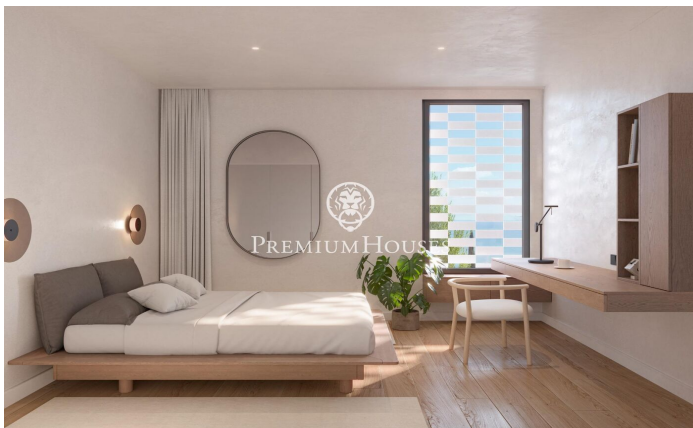
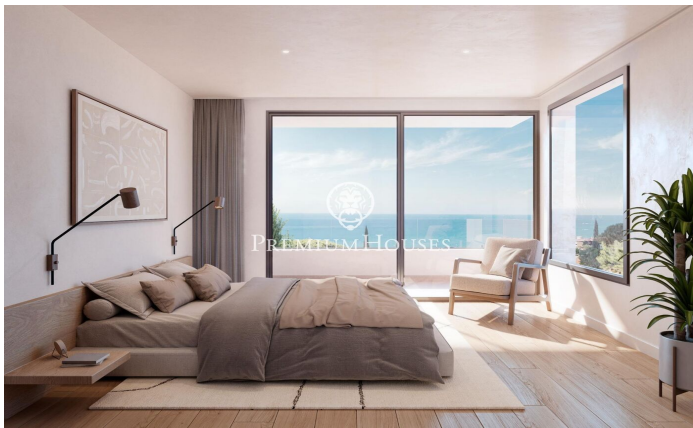
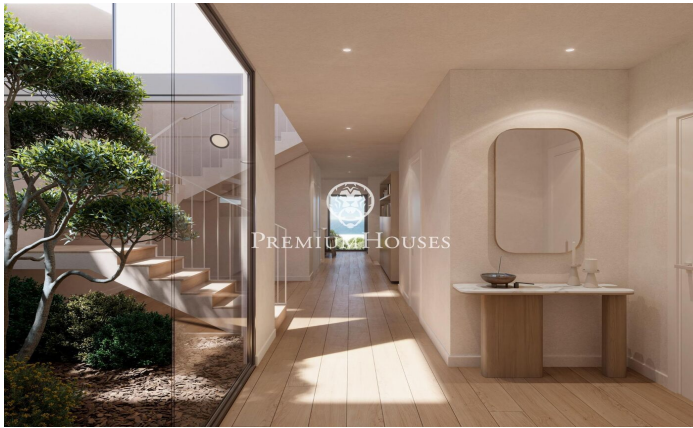
Caldes d'Estrac / Maresme/Barcelona Costa Norte

Discover Residencial Morgana: an exclusive complex of eight newly built semi-detached homes, designed according to the principles of sustainability and circular economy that define Circular Homes' commitment. Located in the highest and most privileged area of the La Indiana residential complex, these homes have been carefully designed to offer the best of Mediterranean style in a unique natural setting. Thanks to their staggered layout, each home enjoys stunning sea views from every room, as well as excellent natural light and optimal ventilation, guaranteed by their triple orientation. The interiors are adapted to different lifestyles, with floor areas ranging from 250 to 260 m². The homes offer spacious living areas and the possibility of choosing between 4 or 5 bedrooms and 3 or 4 bathrooms, responding to the needs of each family. Outside, each home has a private garden and large terraces, ideal for relaxing and enjoying the surroundings. They also include a closed garage, providing comfort and security for residents. The residential complex is completed with a communal swimming pool surrounded by gardens on different levels, creating an exclusive, intimate and relaxing atmosphere. With architecture that blends Catalan tradition with a contemporary and sustainable approach, R...

987.770 €

252 m²
4 комнаты
3 ванные комнаты
270 m² земельный
участок
бассейн
отопление
вид на море
стоянка
терраса
встроенные шкафы







VIVIENDA A-2

SUPERFICIES	UTA	CONSTRUIDA
Superficie Interior	198,96 m ²	298,03 m ²
Plantas	68,00 m ²	88,00 m ²
Plantas bajas	68,00 m ²	88,00 m ²
Superficie terrazas	81,75 m ²	81,75 m ²
Superficie aparcamiento	35,44 m ²	35,44 m ²
SUPERFICIE TOTAL CONSTRUIDA	233,27 m²	278,08 m²
Superficie exterior		138,67 m ²
Superficie parcela		270,27 m ²
Superficie Total de parcela		270,27 m²

LOCALIZACIÓN
Código catastral: B92000000

OPRECION
Código catastral: B92000000

ESCALA GRÁFICA
1:100

PLANTA SOTANO
PLANTA BAJA
PLANTA PRIMERA

Barcelona Coast, the best place to live
Over 2,500 hours of sun per year

48 Towns and villages to live seafrent

Contact us for more information or to arrange a viewing

Tel: +34 93 798 88 99

info@premiumhouses.com

www.premiumhouses.es