

Penthouse with spectacular views of the Sagrada Família

Ref: P-016390

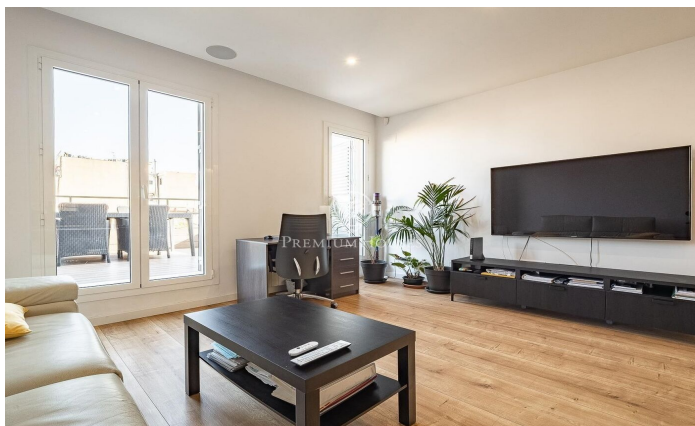
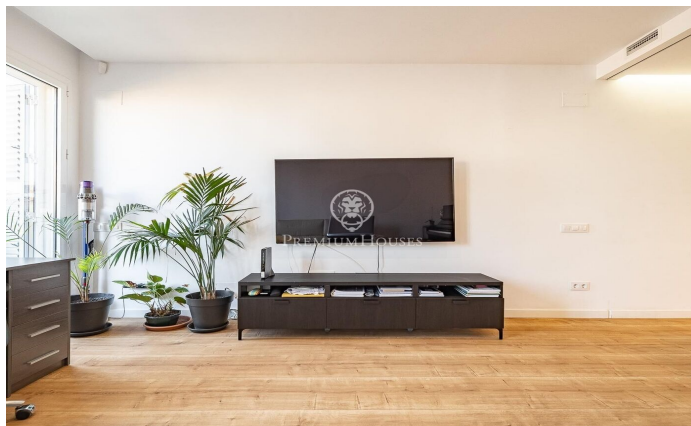
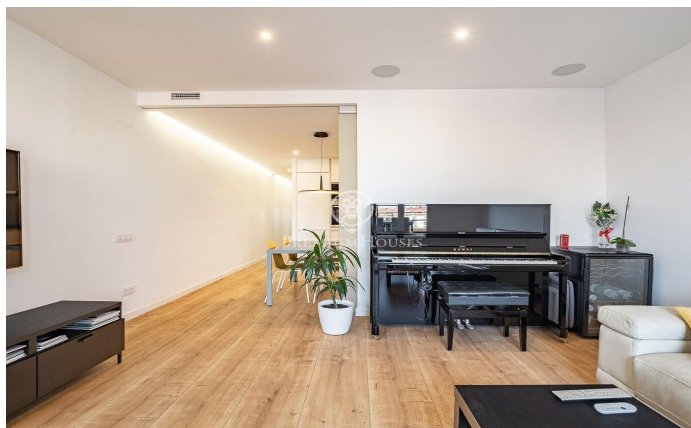
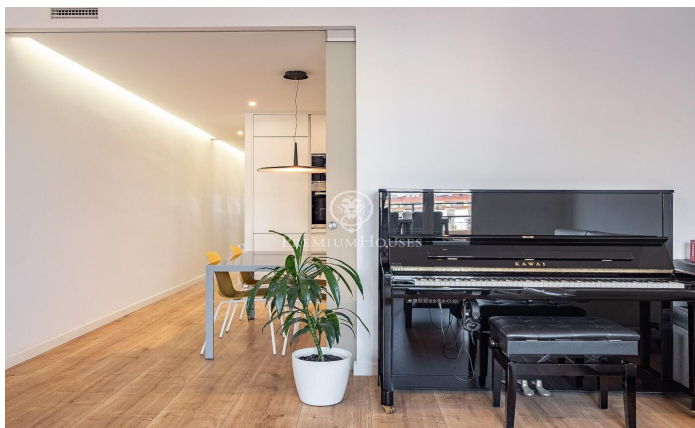


Eixample / Barcelona Ciudad

We present a luminous 141 m² penthouse, completely renovated with top quality materials. This impressive space has two terraces that add up to 48 m², where you can enjoy panoramic views of the sea and the emblematic Sagrada Familia. It also includes pre-installation of sound system with outdoor speakers, electric awnings, decking and gardening. The flat is distributed in two areas (day and night). In the day area, you will find a spacious and cosy living-dining room that integrates perfectly with the kitchen. In the night area, you will enjoy two single bedrooms, separated by an elegant sliding door, a master suite and a modern bathroom. The location is unbeatable, facing south-west, next to the Sagrada Familia. You are just a stone's throw from the Westfield Glòries shopping centre, the Hospital Santa Creu and San Pau, as well as a variety of shops and schools. In addition, the property is very well connected with metro stations (L5 and L2), bus and tram stops, making it easy to move around the city.

835.000 €

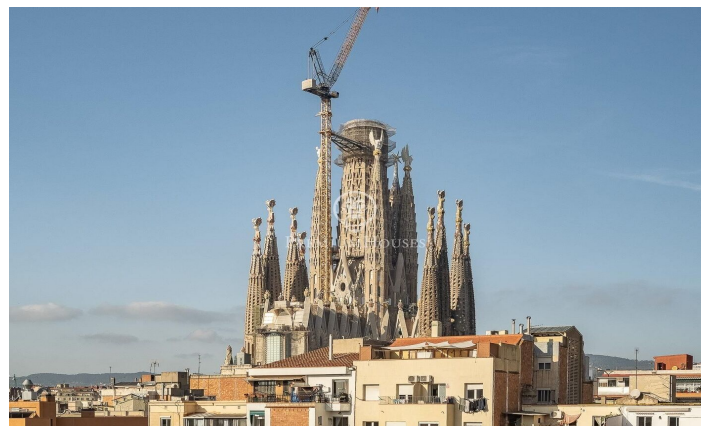
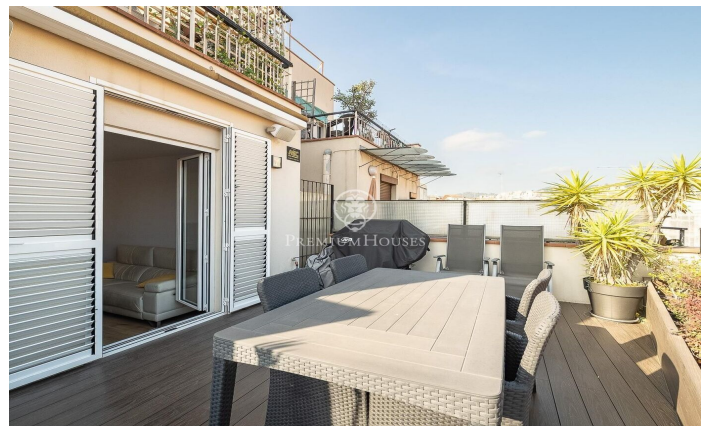
93 m²
3 ???????
2 ?????? ??????
?????????
????
????????
??????
?????????? ?????





PREMIUMHOUSES
Excellence in Real Estate

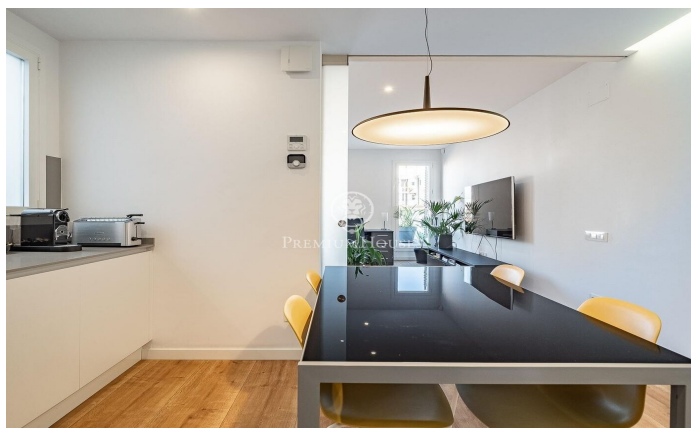
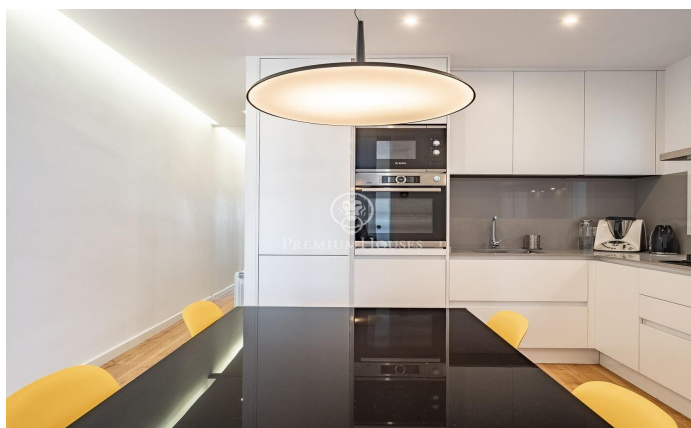
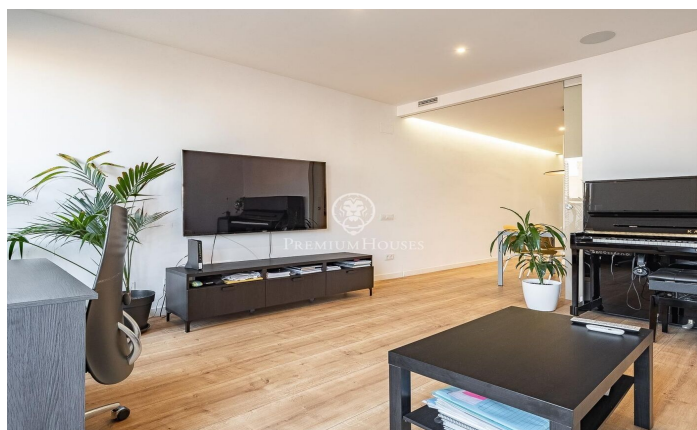
Avda. Pau Casals, 5 Barcelona
Tel: +34 93 200 30 79





PREMIUMHOUSES
Excellence in Real Estate

Avda. Pau Casals, 5 Barcelona
Tel: +34 93 200 30 79



Contact us for more information or to arrange a viewing

Tel: +34 93 200 30 79

info@premiumhouses.com

www.premiumhouses.es