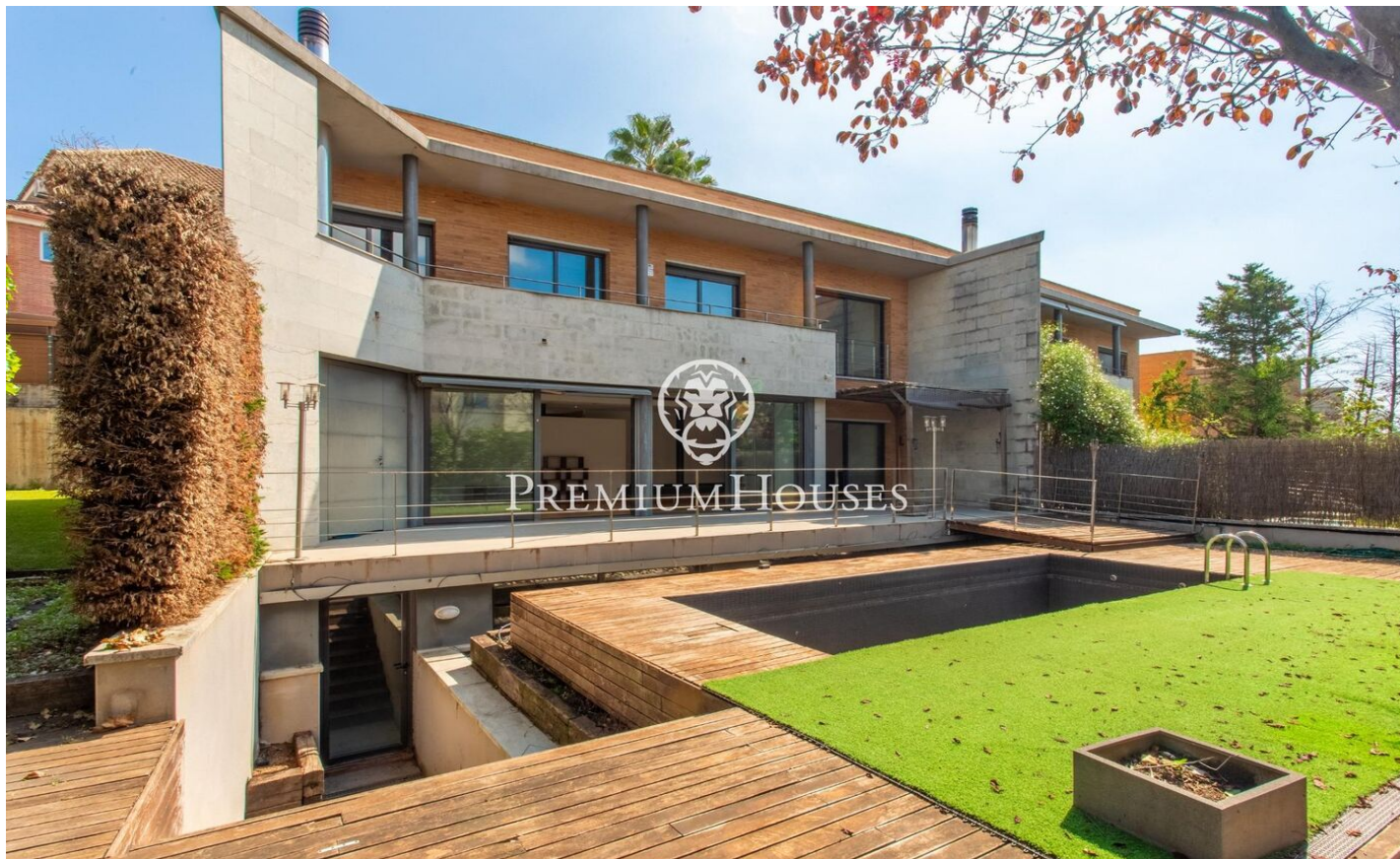




Semi-detached house in Alella for sale with private swimming pool

Ref: PH103557



Alella / Maresme/Barcelona Costa Norte

Exclusive 436 m² villa in Alella with garden and private pool. The property is spread over three floors, clearly separating the day and night areas. Upon entering, we find a guest toilet, a separate kitchen and a spacious, bright living-dining room with direct access to a spectacular two-level terrace and private pool. On the upper floor there are four double bedrooms, all exterior, with fitted wardrobes and access to a terrace overlooking the main garden, as well as two full bathrooms, one of which is en suite. On the lower floor there is a spacious open-plan basement with multiple possibilities for use, such as a gym, office or cinema room, which connects to the main garden via stairs. The house, although in need of a little updating, offers a practical and comfortable layout, as well as a private garage located just ten metres from the entrance within the communal area. Alella, in the heart of the Maresme, is just 2 km from the coast and about 18 km from Barcelona, surrounded by vineyards and nature, with a privileged Mediterranean climate. It is an elegant and peaceful environment, highly valued by both national and international residents who are looking for quality of life and good connections to the city. The municipality combines the charm of traditional architecture, wi...

1.099.000 €

395 m²

4 комнаты

3 ванные комнаты

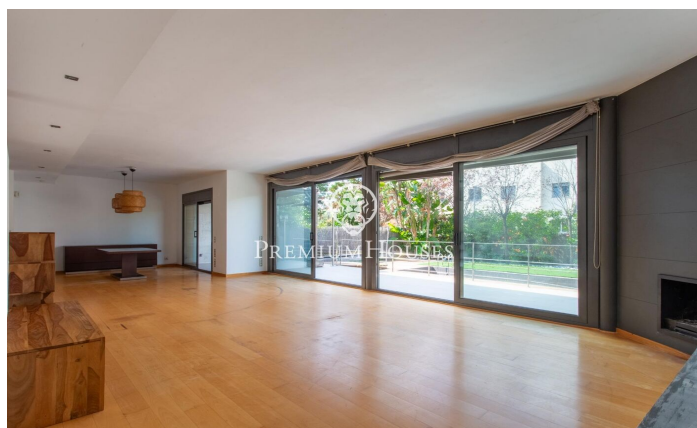
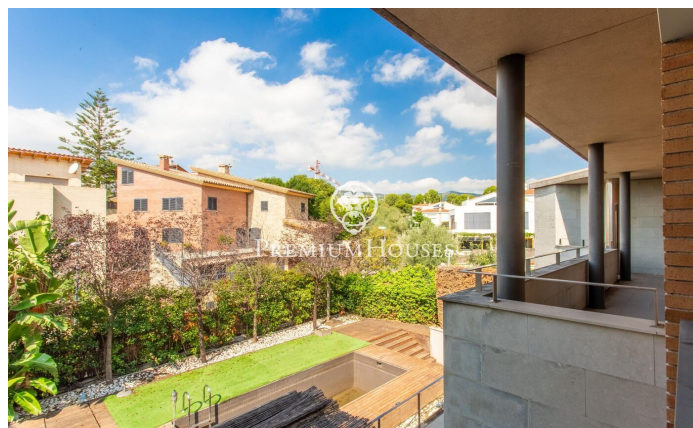
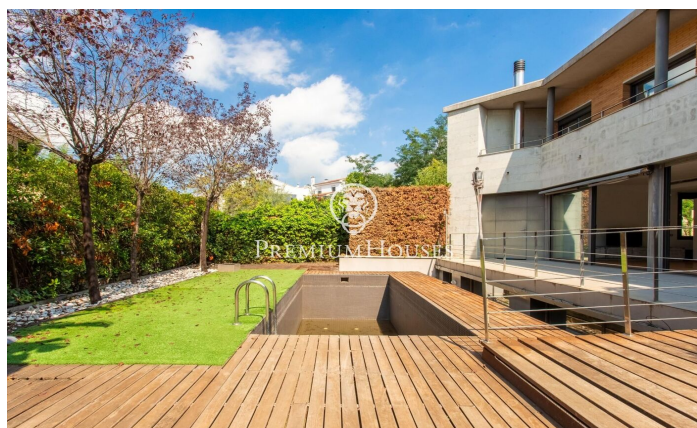
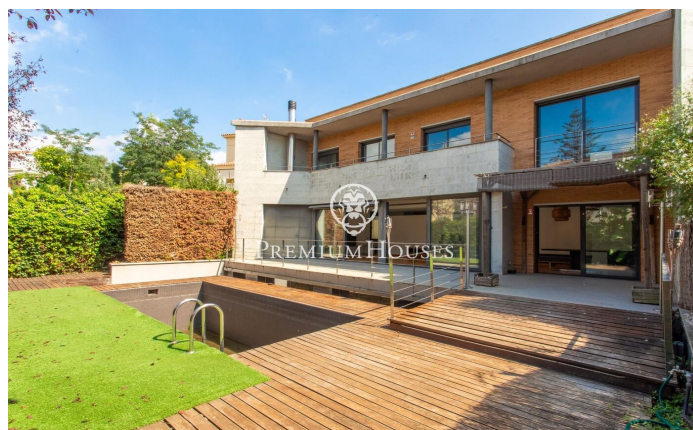
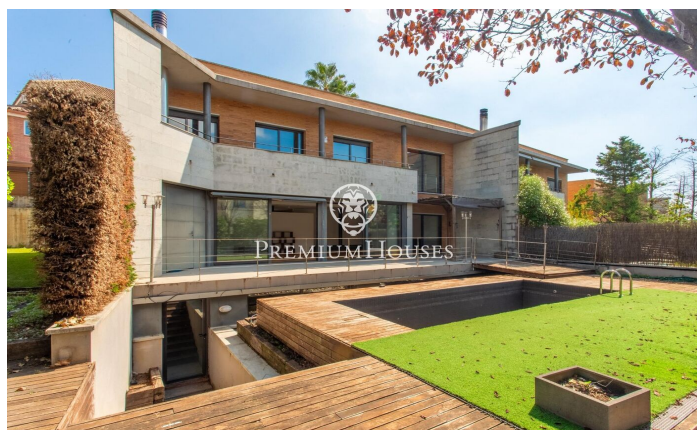
терраса

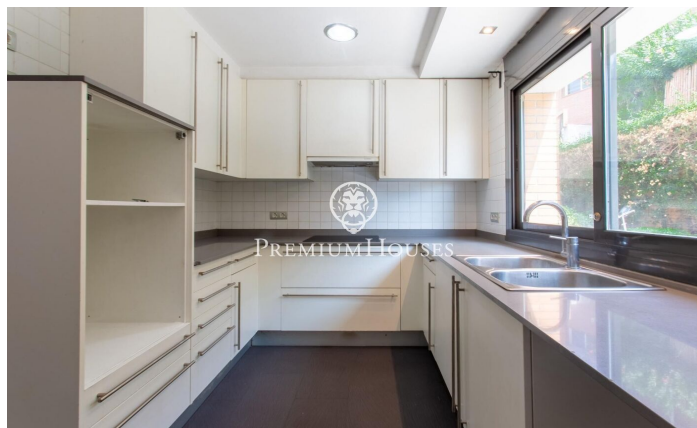
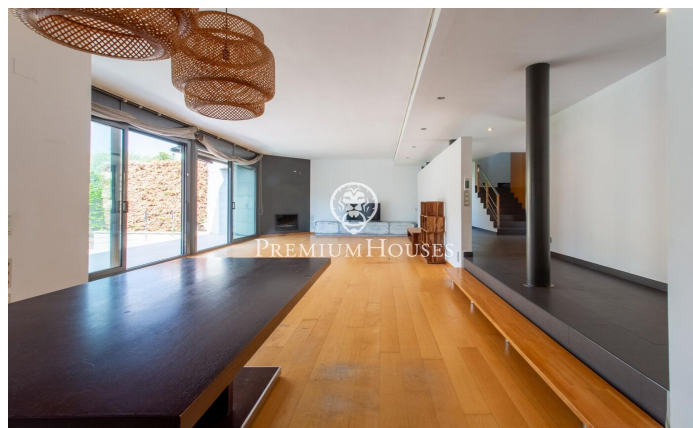
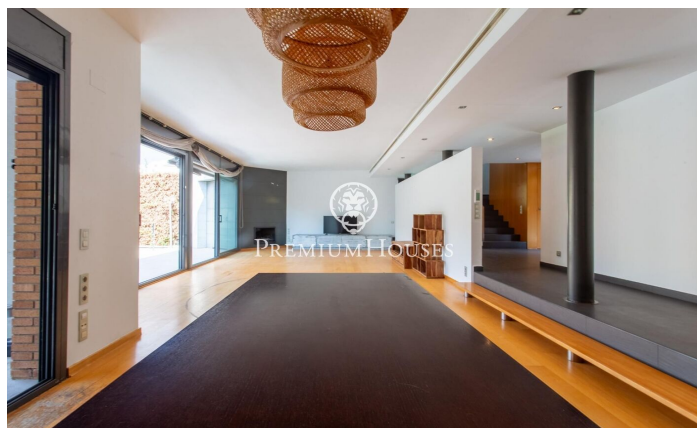
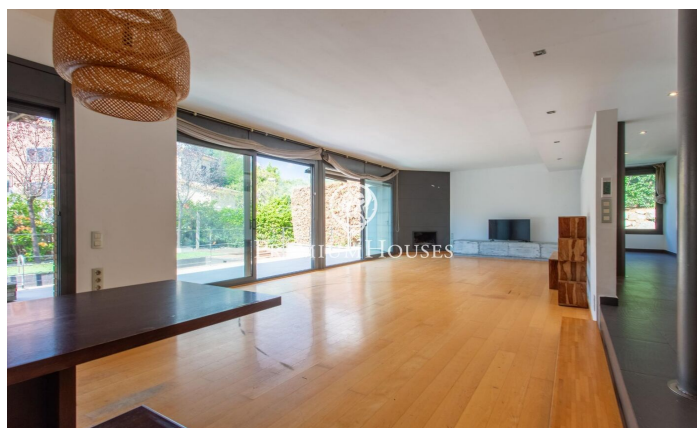
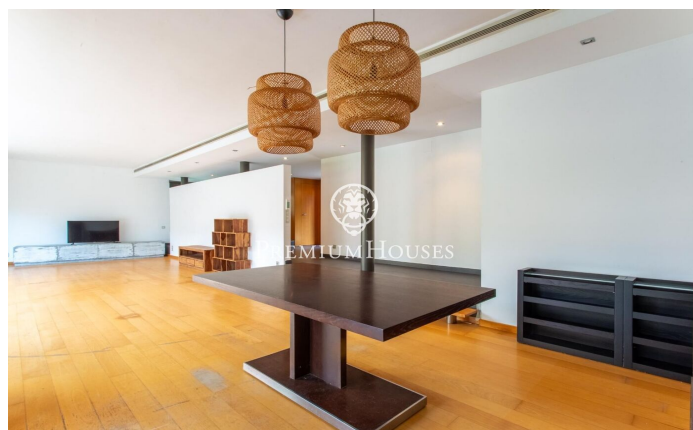
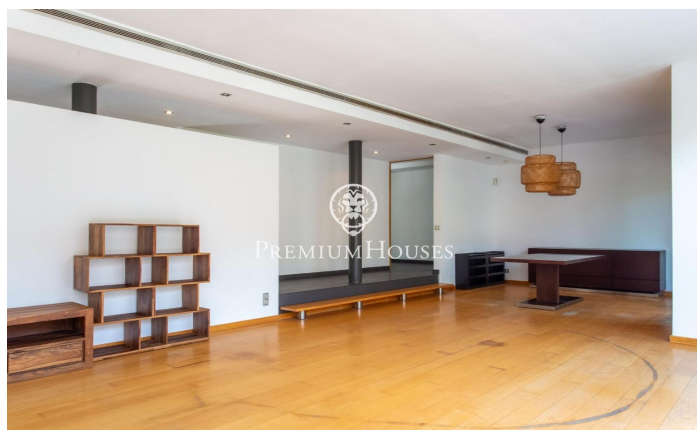
балкон



PREMIUMHOUSES
Excellence in Real Estate

Avda. Maresme, 143 Mataró
Tel: +34 93 798 88 99

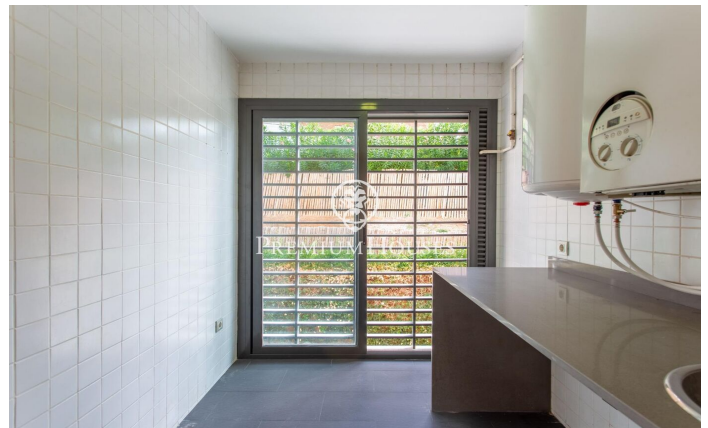






PREMIUMHOUSES
Excellence in Real Estate

Avda. Maresme, 143 Mataró
Tel: +34 93 798 88 99



Contact us for more information or to arrange a viewing

Tel: +34 93 798 88 99

info@premiumhouses.com

www.premiumhouses.es