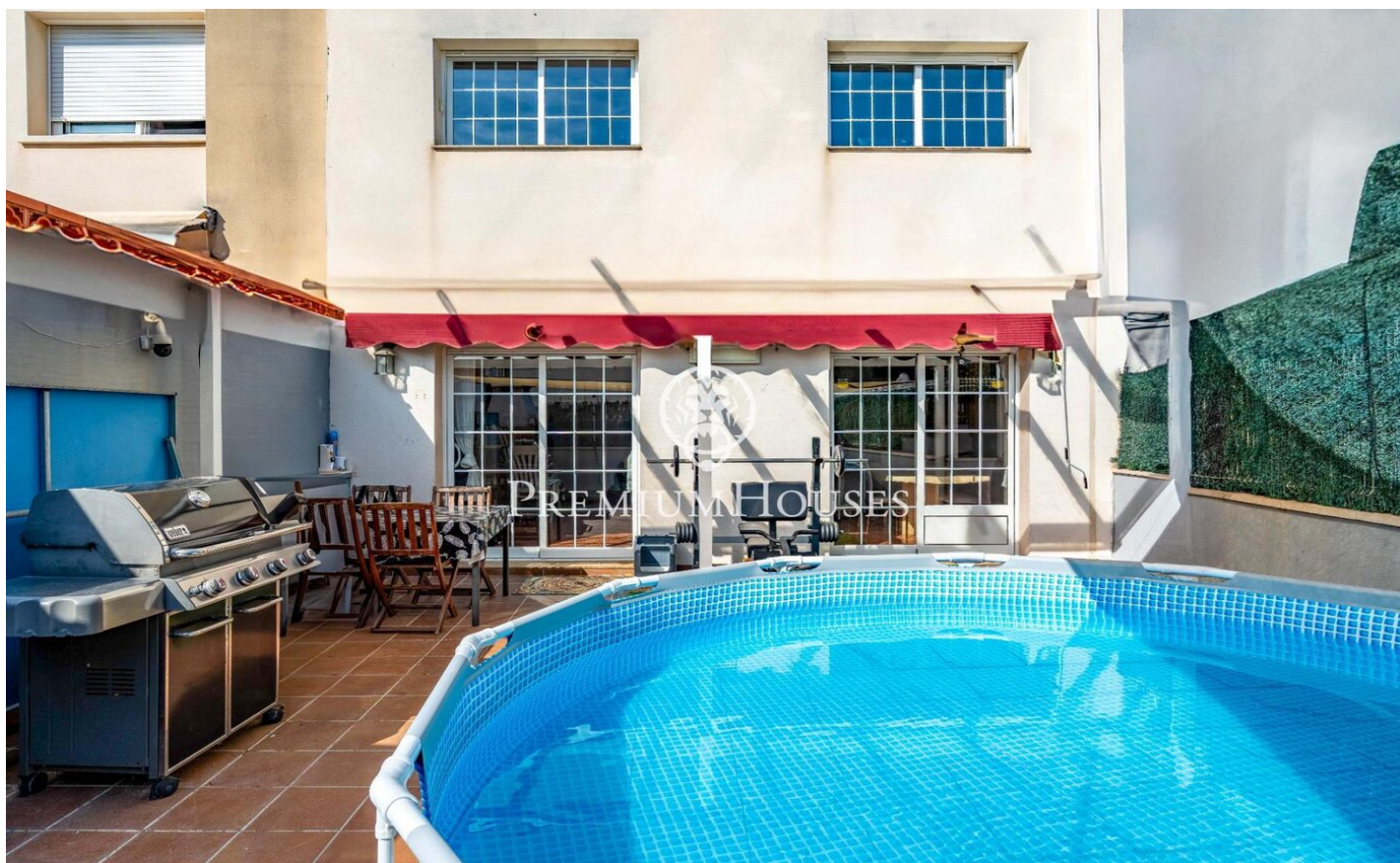




Townhouse with Terrace in La Collada

Ref: PHS101165



Vilanova i la Geltrú / Barcelona Costa Sur

This semi-detached house is located in the Collada neighborhood of Vilanova i la Geltrú. The home features spacious rooms, a patio with a barbecue area, and a garage with space for one car. The property is spread over three floors. The ground floor is accessed through a hall, followed by a kitchen/diner. Then, we find a living-dining room with access to the patio. Finally, there is a guest toilet. On the first floor, we find the sleeping area, which consists of four double bedrooms and two full bathrooms. On the third floor, we find a double attic room, a laundry room, and a terrace with unobstructed views. The Collada neighborhood of Vilanova i la Geltrú is characterized by a very quiet, family-friendly atmosphere, close to schools and with excellent bus connections to the center and beaches of Vilanova i la Geltrú.

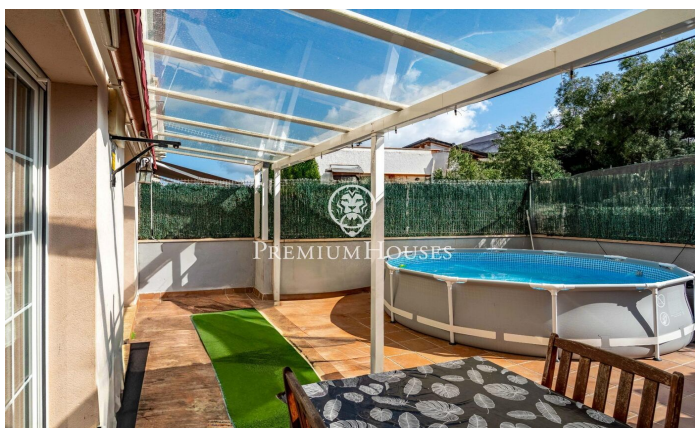
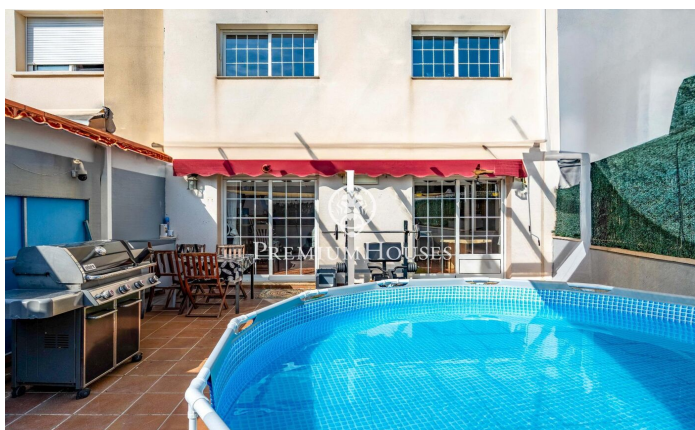
€350,000

153 m²
5 Bedrooms
2 Bathrooms
236 m² plot
A/C
Heating
Phone
Terrace
Balcony



PREMIUMHOUSES
Excellence in Real Estate

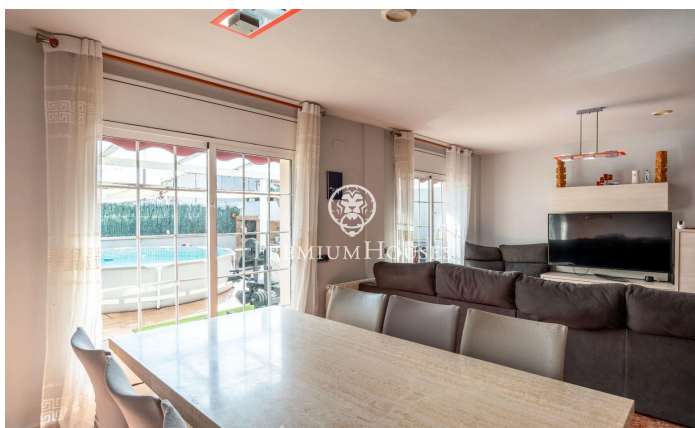
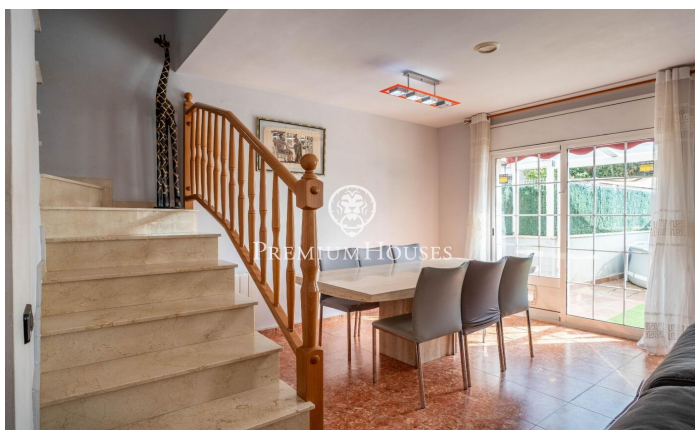
Avda. Camí dels Capellans, 75
Local 4 Sitges
Tel: +34 93 809 72 40





PREMIUMHOUSES
Excellence in Real Estate

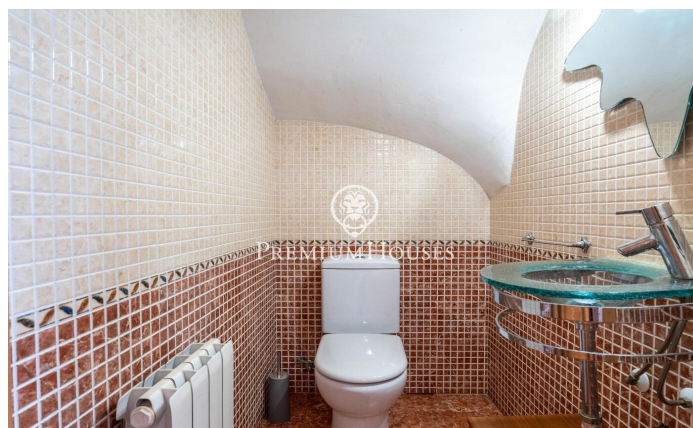
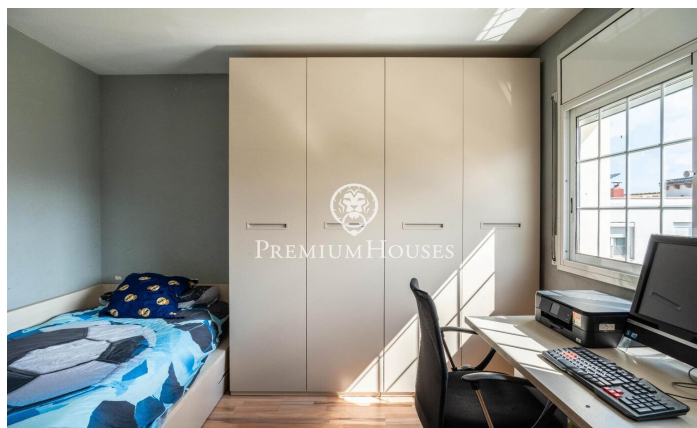
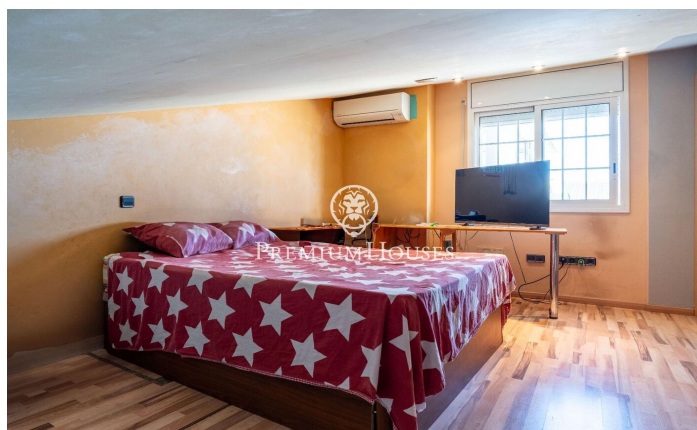
Avda. Camí dels Capellans, 75
Local 4 Sitges
Tel: +34 93 809 72 40





PREMIUMHOUSES
Excellence in Real Estate

Avda. Camí dels Capellans, 75
Local 4 Sitges
Tel: +34 93 809 72 40



Contact us for more information or to arrange a viewing

Tel: +34 93 809 72 40

sitges@premiumhouses.com

www.premiumhouses.es