



Terraced House with Patio and Large Garage in La Collada

Ref: PHS101147

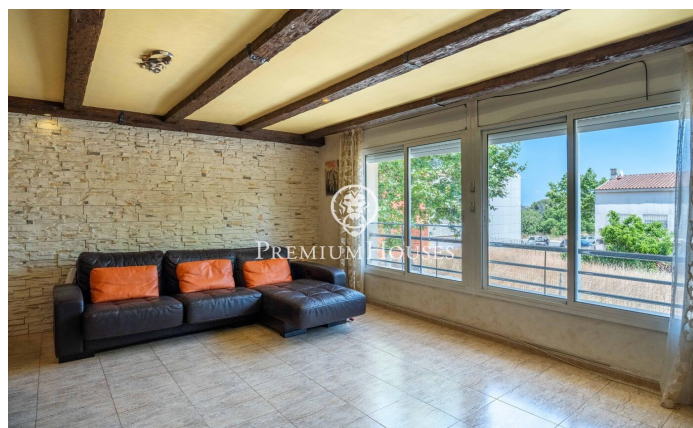
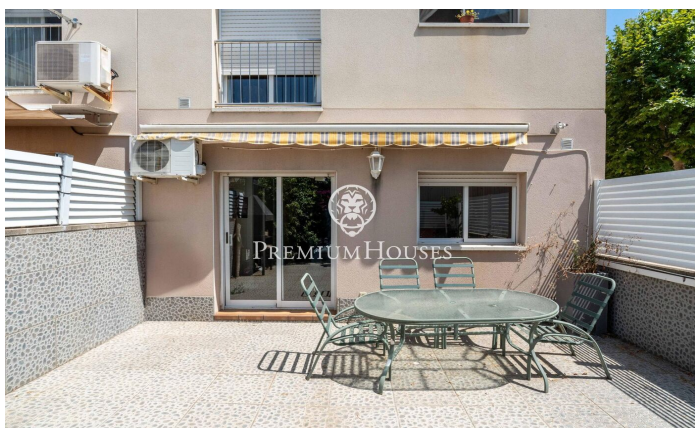
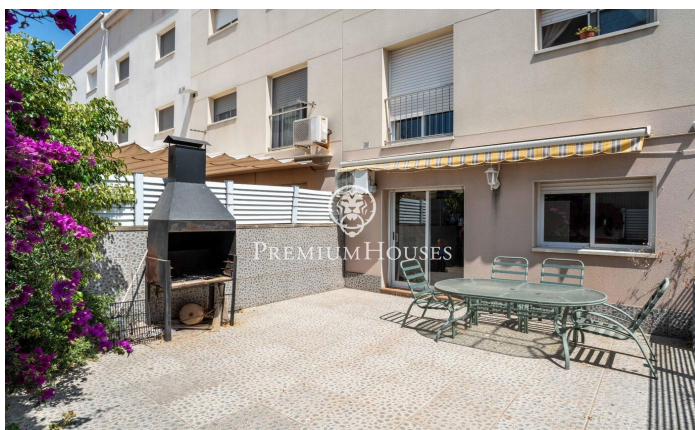


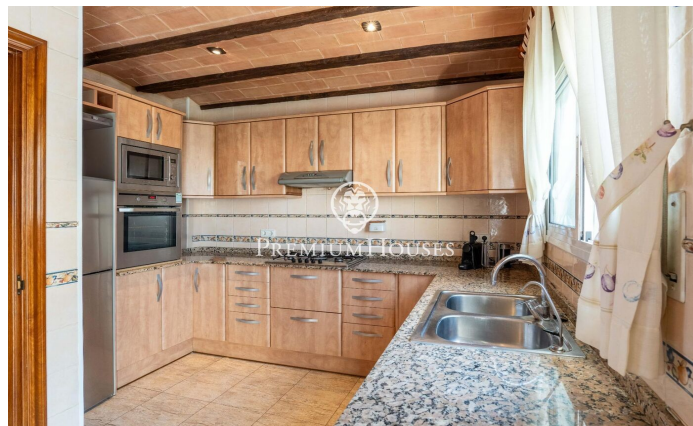
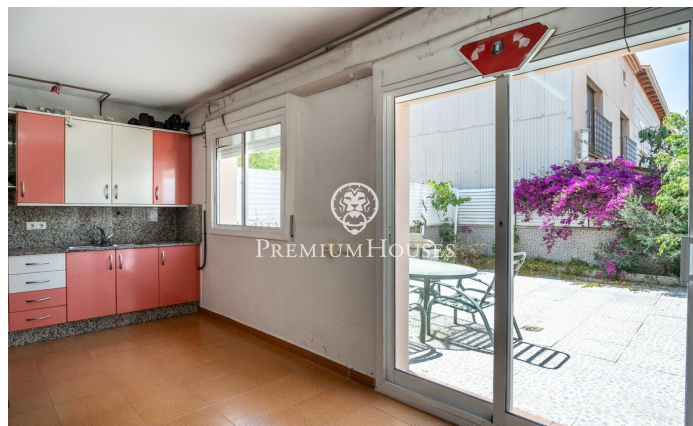
Vilanova i la Geltrú / Barcelona Costa Sur

This semi-detached house is located in the La Collada neighborhood of Vilanova i la Geltrú, near the Itaca school. The home features a large garage, a patio, and beautiful views from the terrace. The property is spread over four floors. Access is via the ground floor, where we find a hall and a large garage with capacity for two cars, an additional kitchen, and a toilet. Next to this kitchen, we find an exit to the patio with a barbecue. On the first floor, we find the living area with a living-dining room, a large kitchen-diner, and a toilet. On the second floor, the sleeping area, we find three double bedrooms, one of them en suite, and a full bathroom serving the other bedrooms. On the third floor, we find a large terrace with unobstructed sea views, a laundry room, and a loft area. The La Collada neighborhood is characterized by a very quiet, family-friendly atmosphere, close to schools, and with excellent bus connections to the center and beaches of Vilanova i la Geltrú.

€350,000

189 m²
3 Bedrooms
2 Bathrooms
100 m² plot
A/C
Heating
Storage
Phone
Terrace







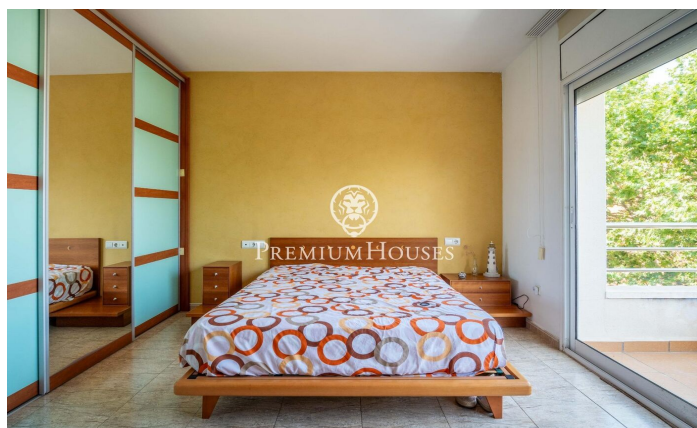
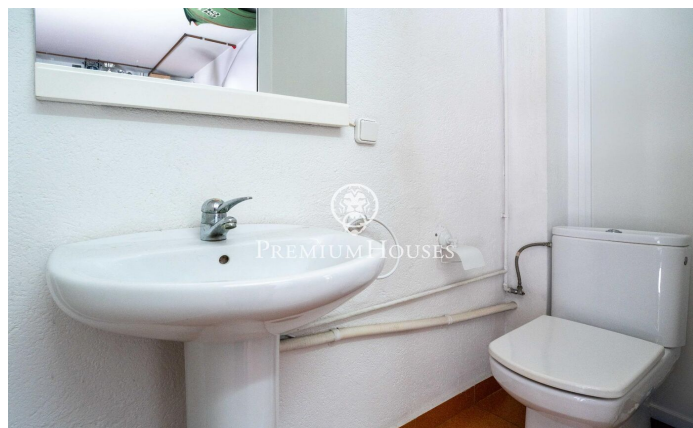
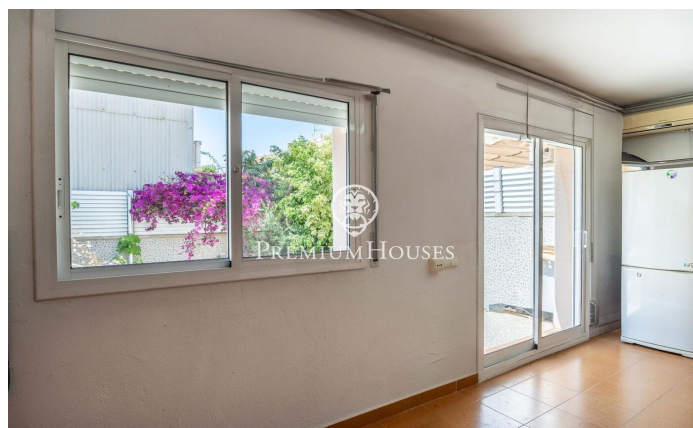
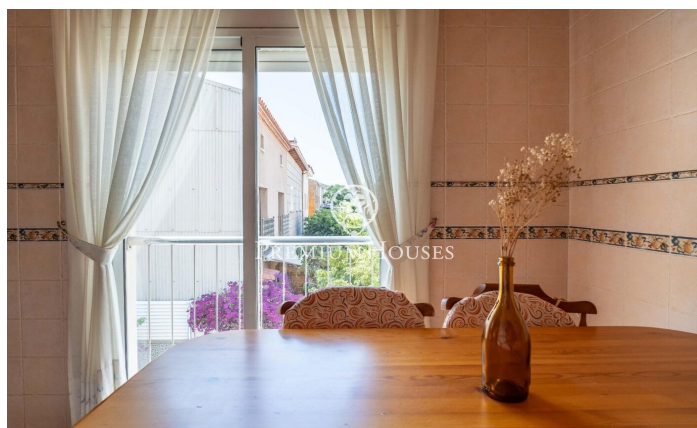
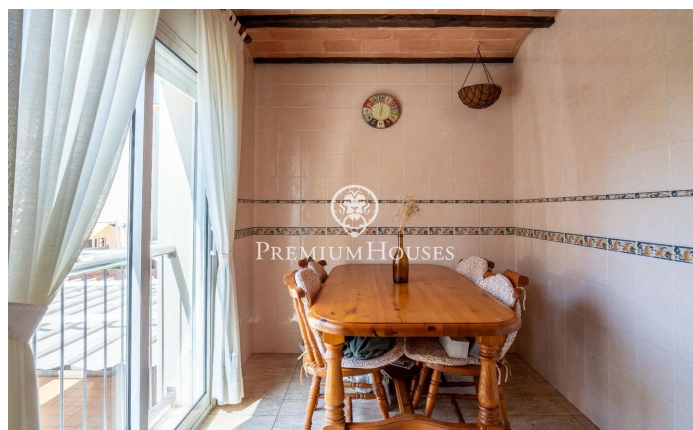
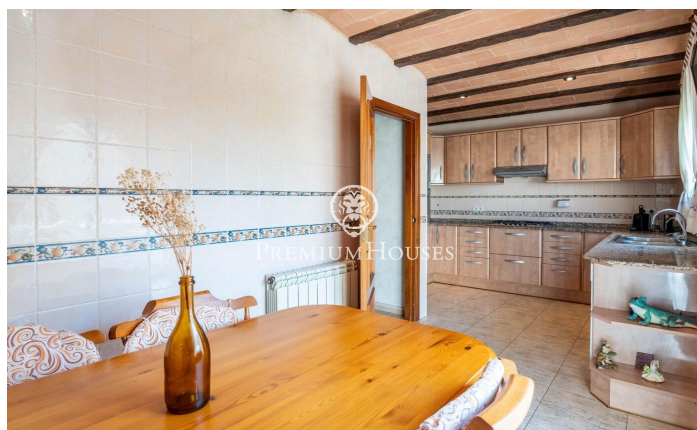
PREMIUMHOUSES

Excellence in Real Estate

Avda. Camí dels Capellans, 75

Local 4 Sitges

Tel: +34 93 809 72 40



Contact us for more information or to arrange a viewing

Tel: +34 93 809 72 40

sitges@premiumhouses.com

www.premiumhouses.es