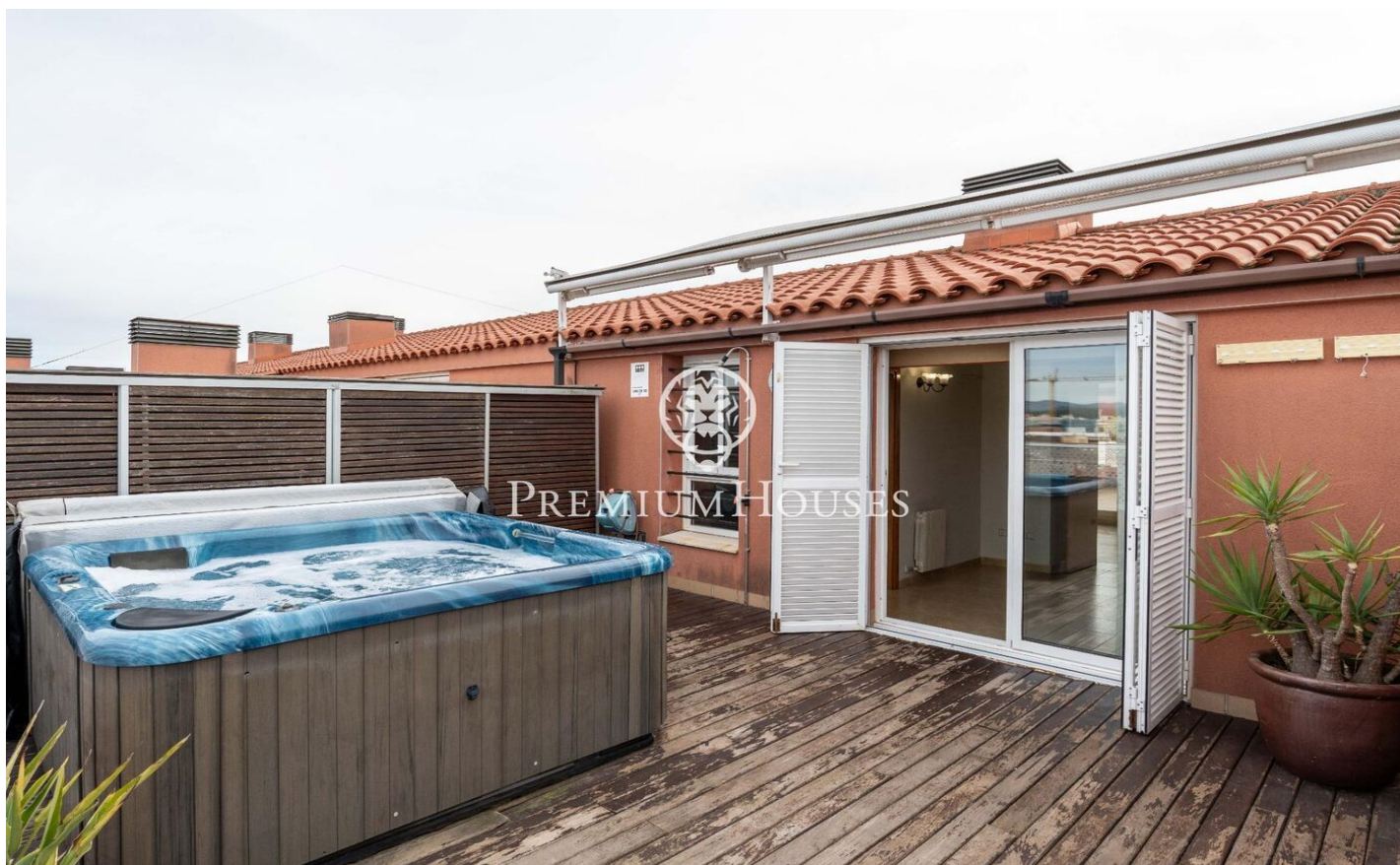




Spacious Penthouse with Views in the City Center

Ref: PHS101270



Vilanova i la Geltrú / Barcelona Costa Sur

In the center of Vilanova i la Geltrú we find this spacious and bright penthouse with three terraces. The property is located in a building with an elevator and includes two large parking spaces. On the main floor, we find the living area with a spacious eat-in kitchen with access to a utility room and a large living-dining room opening onto a terrace. Next, we find three double bedrooms, all with access to the terrace and built-in wardrobes. A full bathroom serves this floor. On the upper floor, we find an open and bright space, ideal for an office or additional living room, with access to a large terrace offering unobstructed views. Also on this floor is a double bedroom suite with access to another terrace featuring a jacuzzi and mountain views. The property is located in an area with all essential services within walking distance and a 7-minute walk from the main Rambla. Its location also provides easy access to the ring roads towards the C-32.

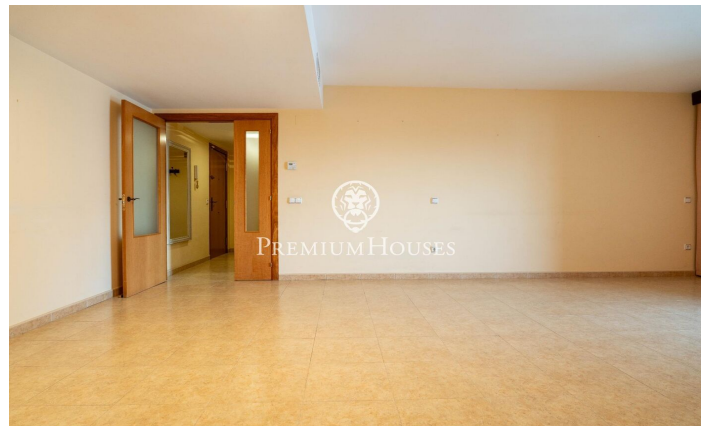
€590,000

167 m²
4 Bedrooms
2 Bathrooms
A/C
Heating
Lift
Parking
Terrace
Built in closets



PREMIUMHOUSES
Excellence in Real Estate

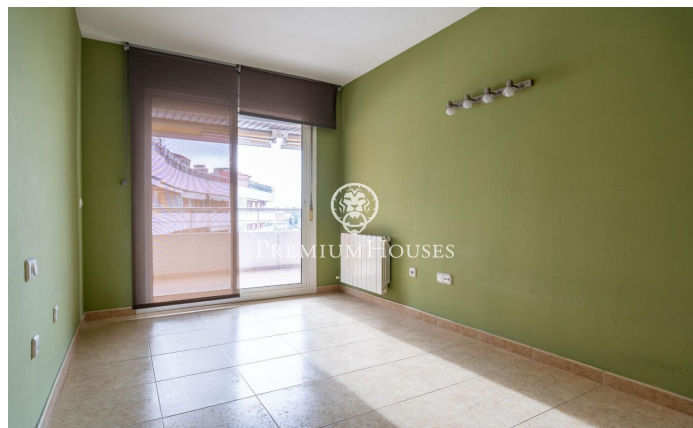
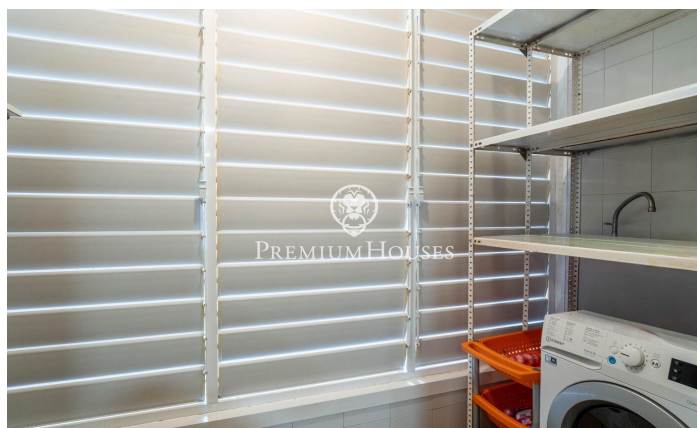
Avda. Camí dels Capellans, 75
Local 4 Sitges
Tel: +34 93 809 72 40





PREMIUMHOUSES
Excellence in Real Estate

Avda. Camí dels Capellans, 75
Local 4 Sitges
Tel: +34 93 809 72 40

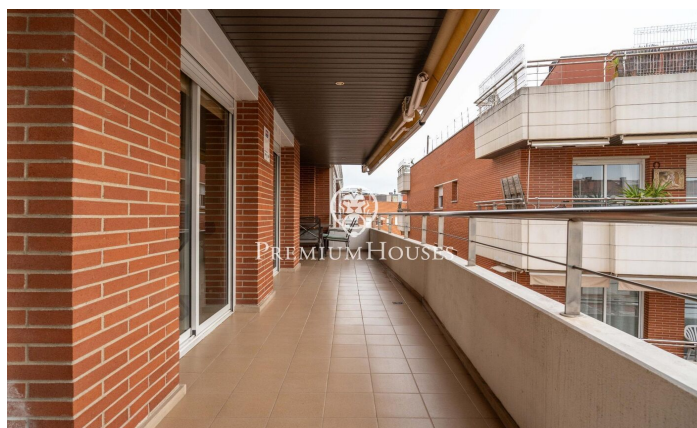
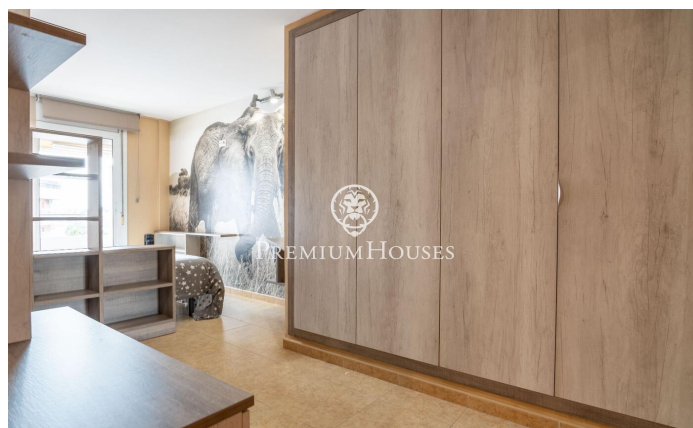
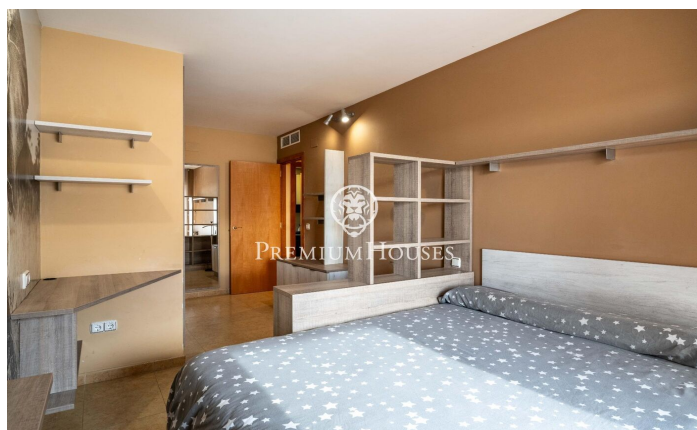




PREMIUMHOUSES

Excellence in Real Estate

Avda. Camí dels Capellans, 75
Local 4 Sitges
Tel: +34 93 809 72 40



Contact us for more information or to arrange a viewing

Tel: +34 93 809 72 40

sitges@premiumhouses.com

www.premiumhouses.es