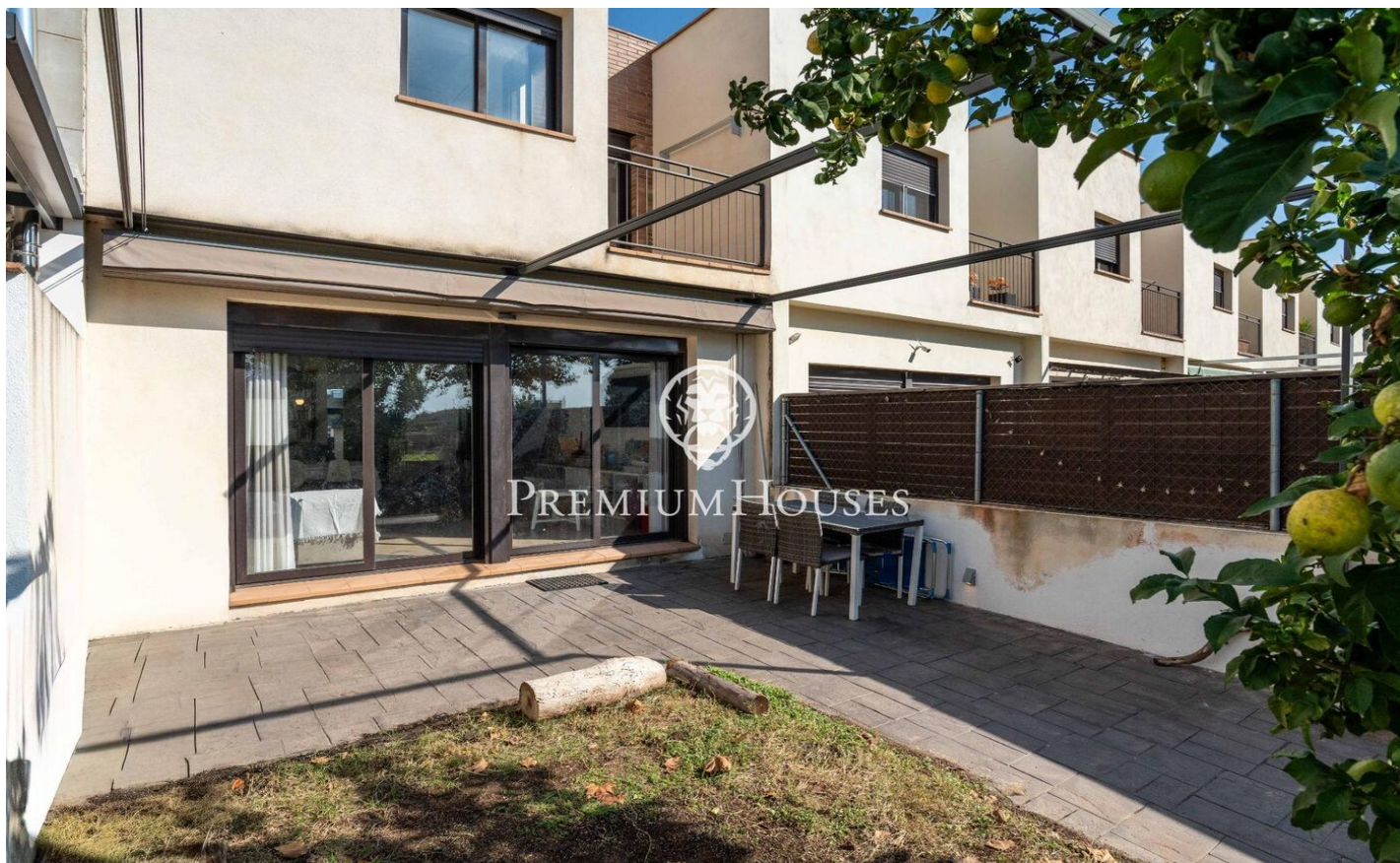




Semi-Detached House with Terrace and Clear Views in Fondo Somella

Ref: PHS101227



Vilanova i la Geltrú / Barcelona Costa Sur

In the Fondo Somella neighborhood in Vilanova i la Geltrú, we find this townhouse with a garden, terrace, and unobstructed views. The property is surrounded by meadows and vineyards. We enter the house through a front courtyard. On the main floor, we find the living area with a spacious living-dining room with access to the garden, an independent kitchen, and a full bathroom. On the first floor, we find the sleeping area with two double bedrooms, one single bedroom, and a full bathroom. There is also a terrace with sea views. The property is very practical and bright. The Fondo Somella neighborhood in Vilanova i la Geltrú stands out for its tranquility and being surrounded by green spaces. The city center and beaches are just minutes away by car. It is also very well connected by bus to several schools, the city center, and the train station, and has quick access to the C-32 highway.

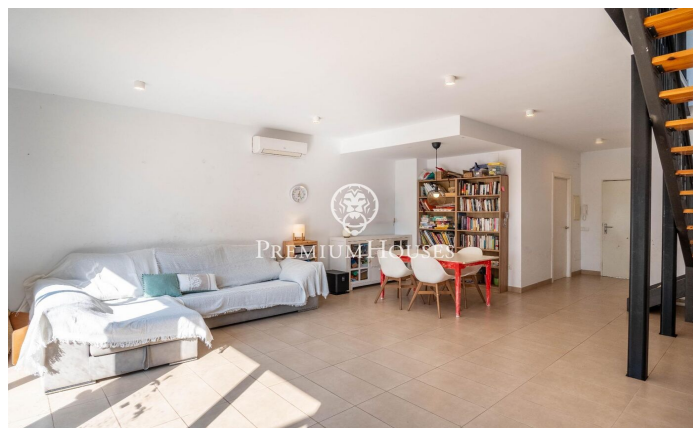
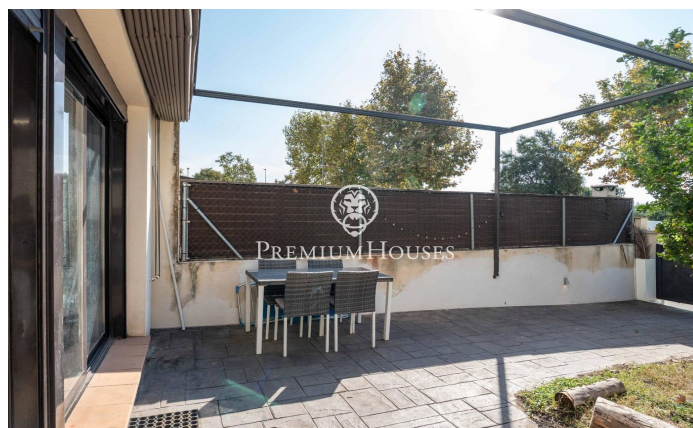
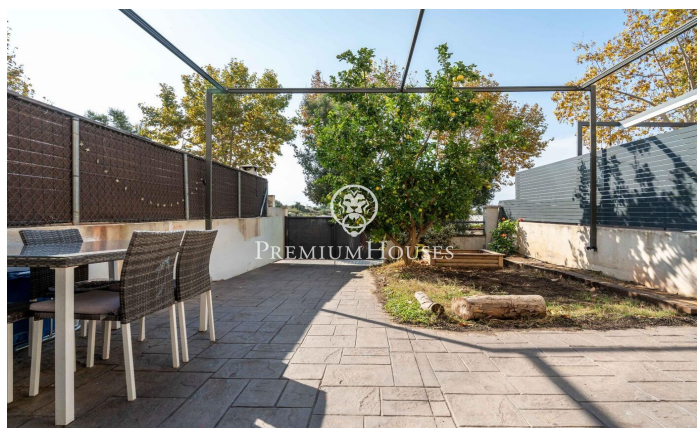
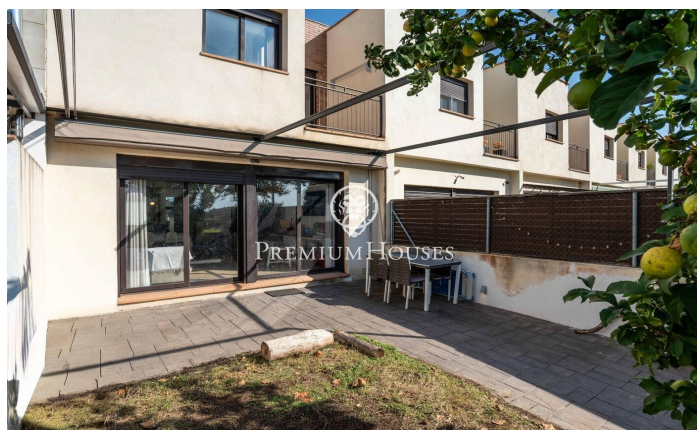
€339,000

112 m²
3 Bedrooms
2 Bathrooms
129 m² plot
A/C
Heating
Sea views
Terrace
Balcony
Built in closets



PREMIUMHOUSES
Excellence in Real Estate

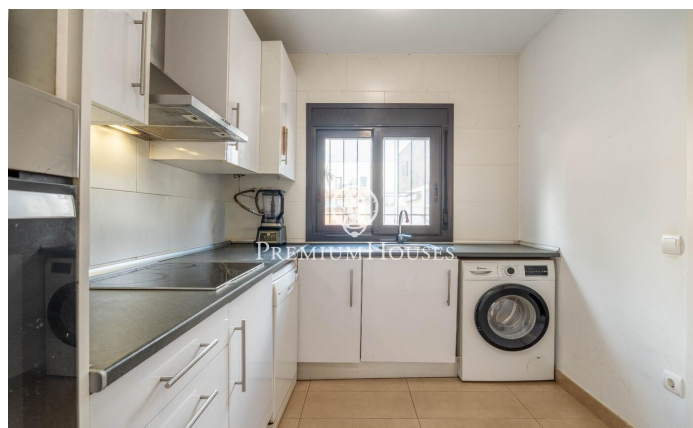
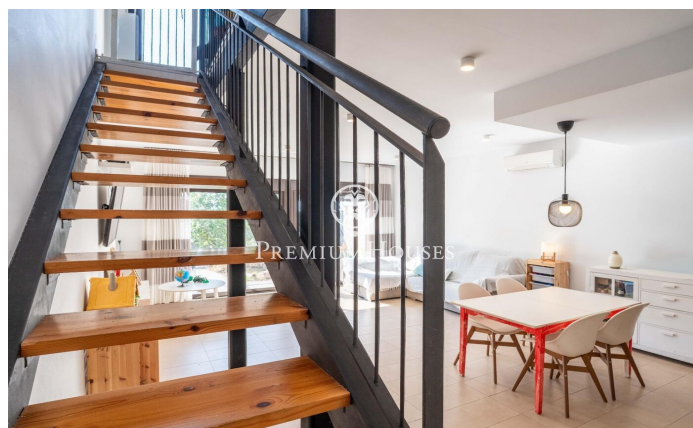
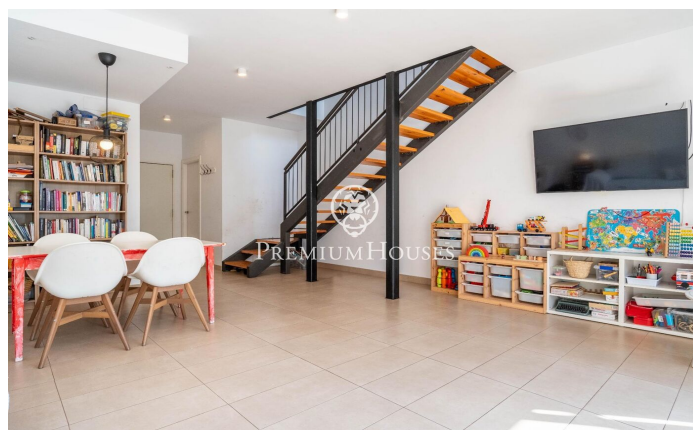
Avda. Camí dels Capellans, 75
Local 4 Sitges
Tel: +34 93 809 72 40





PREMIUMHOUSES
Excellence in Real Estate

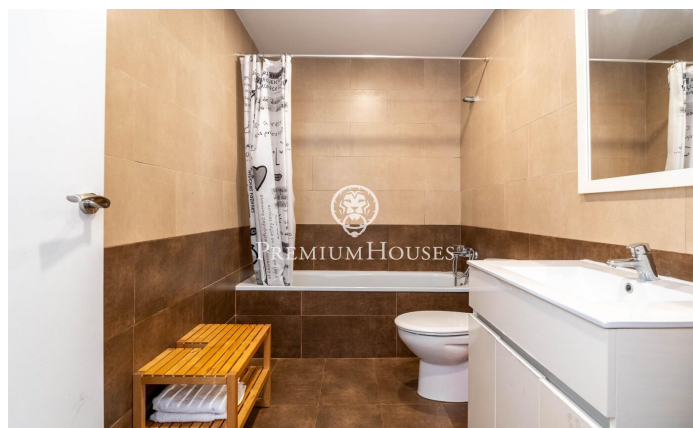
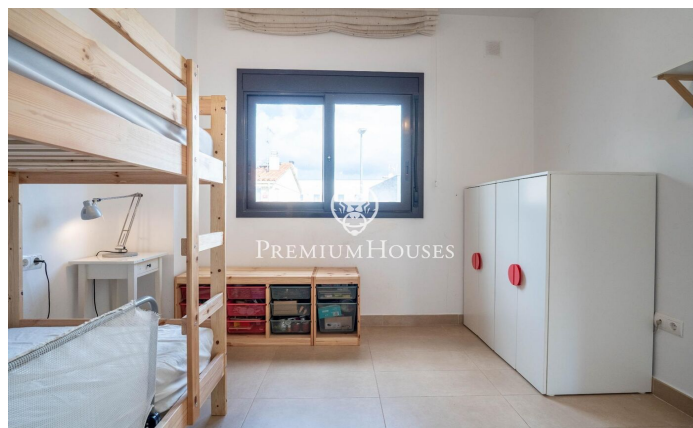
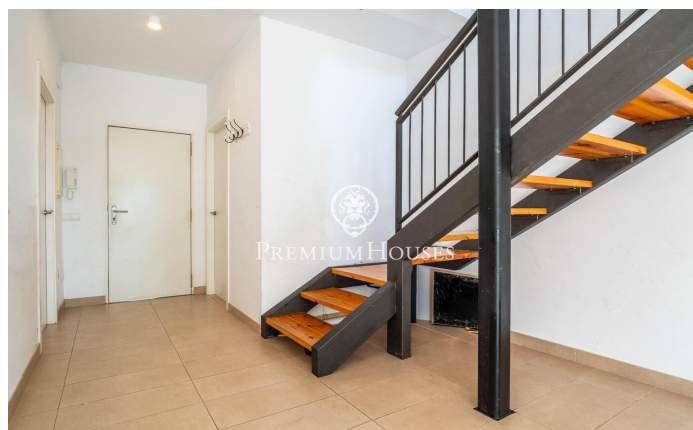
Avda. Camí dels Capellans, 75
Local 4 Sitges
Tel: +34 93 809 72 40





PREMIUMHOUSES
Excellence in Real Estate

Avda. Camí dels Capellans, 75
Local 4 Sitges
Tel: +34 93 809 72 40



Contact us for more information or to arrange a viewing

Tel: +34 93 809 72 40

sitges@premiumhouses.com

www.premiumhouses.es