



Semi-detached House with Patio and Unobstructed Views in La Collada

Ref: PHS100889



Vilanova i la Geltrú / Barcelona Costa Sur

In La Collada neighborhood of Vilanova i la Geltrú we find this townhouse with unobstructed views. The property has a large patio and a cabin garage. The ground floor is made up of a hall and a large garage with a laundry room and pantry. From the hall we access a large patio. The first floor is where we find the day area. It is composed of a living-dining room with unobstructed views, a separate kitchen, a single bedroom and a full bathroom that serves the floor. On the second floor we find the night area. This is made up of a suite, two double bedrooms and a full bathroom. The La Collada neighborhood is characterized by having a very quiet family atmosphere close to schools and with a very good bus connection to Vilanova i la Geltrú.

€410,000

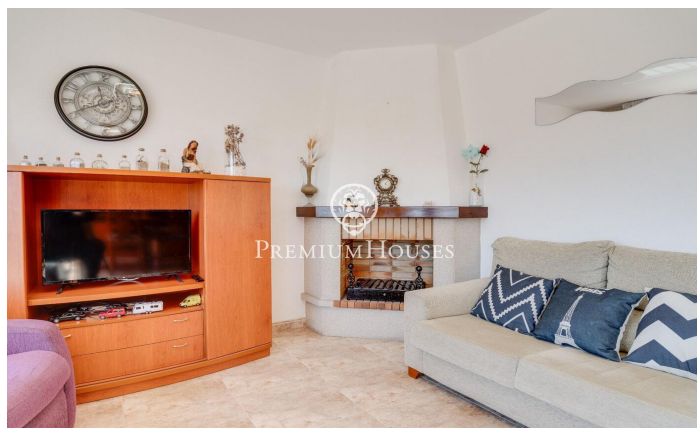
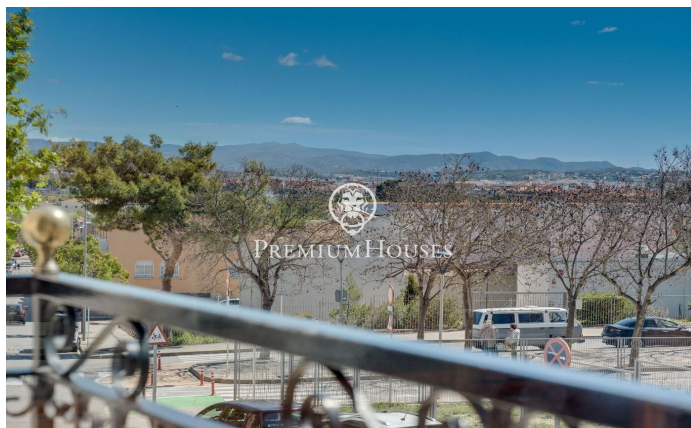
203 m²
4 Bedrooms
3 Bathrooms
Heating
Backyard
Storage
Phone
Parking

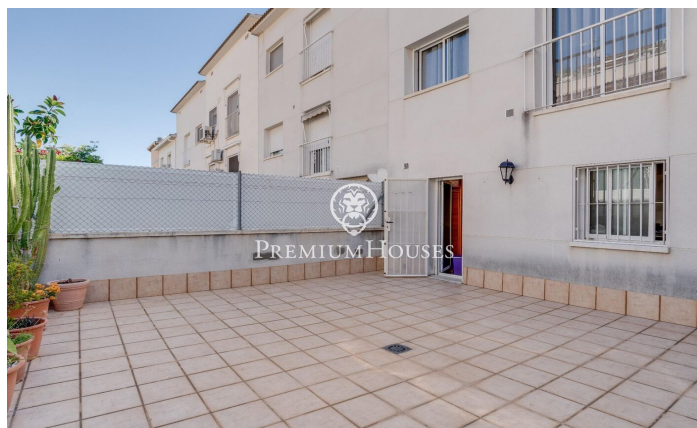
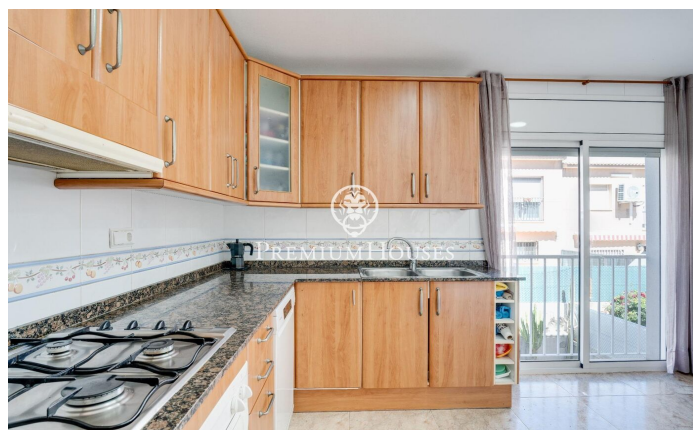
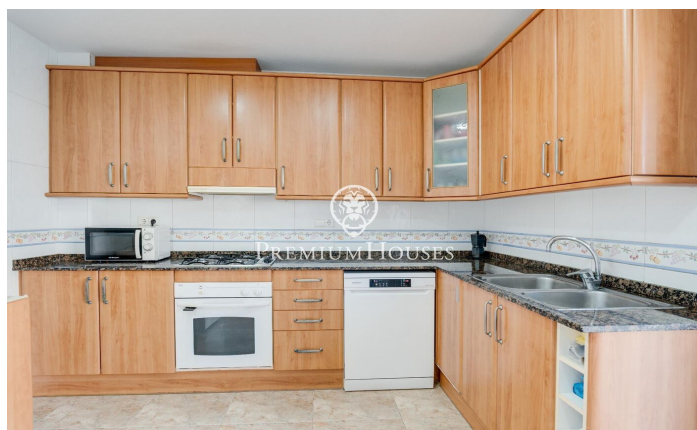


PREMIUMHOUSES

Excellence in Real Estate

Avda. Camí dels Capellans, 81
Local 3 Sitges
Tel: +34 93 809 72 40







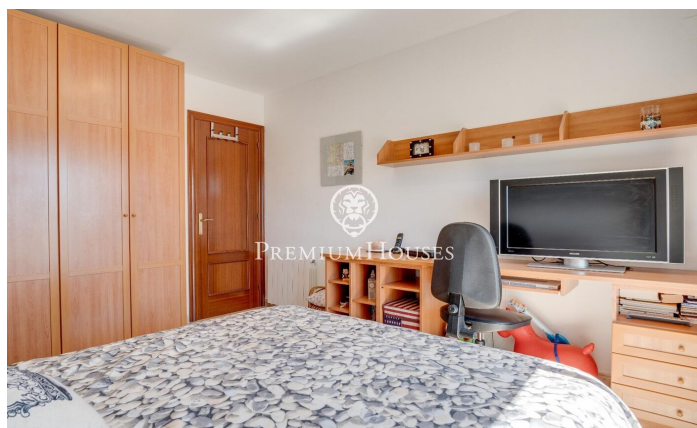
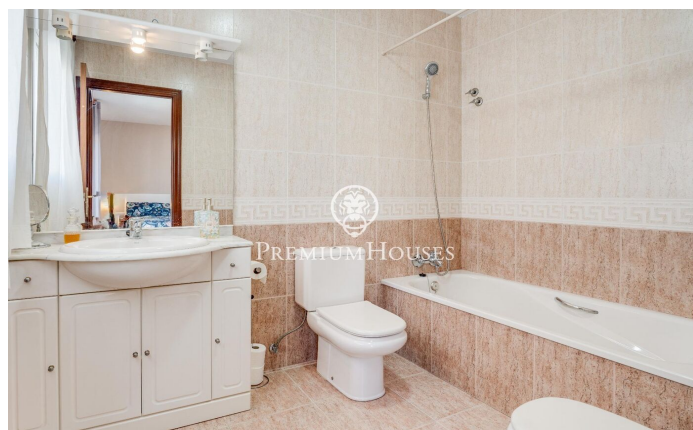
PREMIUMHOUSES

Excellence in Real Estate

Avda. Camí dels Capellans, 81

Local 3 Sitges

Tel: +34 93 809 72 40



Contact us for more information or to arrange a viewing

Tel: +34 93 809 72 40

sitges@premiumhouses.com

www.premiumhouses.es