

Rustic Property with Large Land to Reform in Vilanova i la Geltrú

Ref: PHS100880



Vilanova i la Geltrú / Barcelona Costa Sur

Rustic house with large land to renovate in the Fondo Somella neighborhood of Vilanova i la Geltrú. The house has a large size and clear views. The house has 3 floors. On the ground floor we find a large open area to reform. On the first floor we find the day area composed of a living-dining room and a separate kitchen with a pantry. The night area consists of five double bedrooms and a bathroom. On the second floor there is another open space to renovate. This rustic house with land is located in the Fondo Somella neighborhood of Vilanova i la Geltrú. This is a quiet and private location situated on the outskirts of the township. Additionally, it is close to the national highway.

€600,000

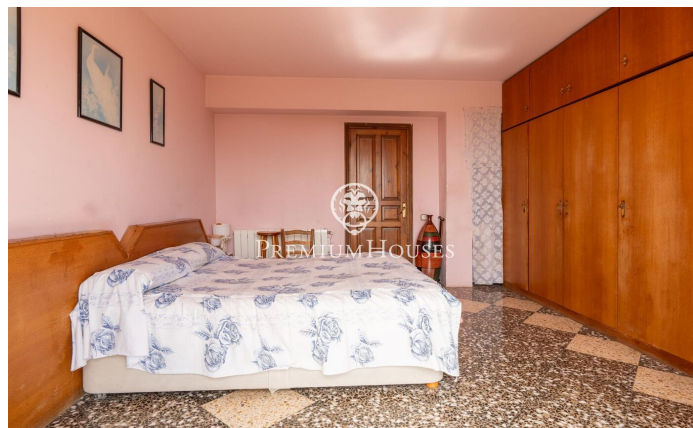
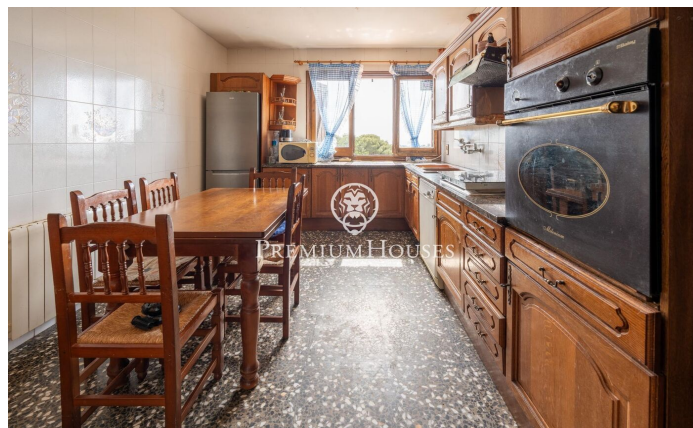
858 m²
5 Bedrooms
3 Bathrooms
8,060 m² plot
Pool
Heating
Storage
Phone
Fireplace
Built in closets



PREMIUMHOUSES
Excellence in Real Estate

Avda. Camí dels Capellans, 81
Local 3 Sitges
Tel: +34 93 809 72 40

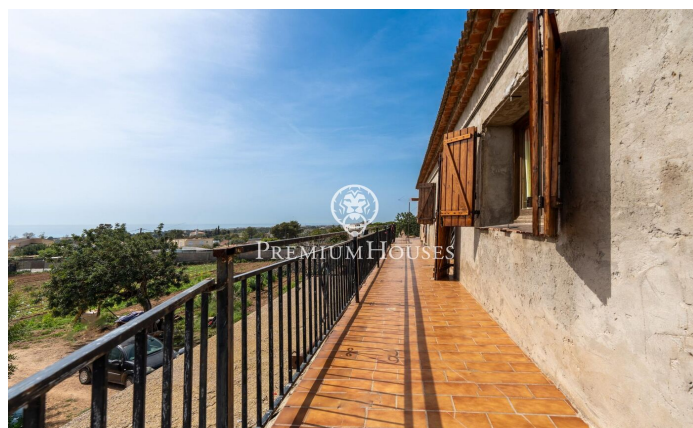
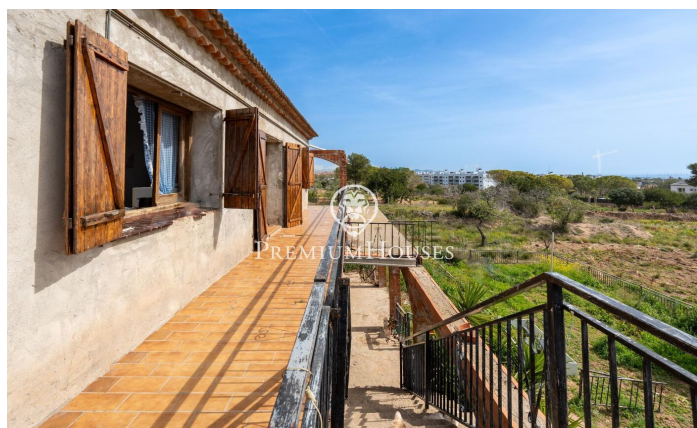






PREMIUMHOUSES
Excellence in Real Estate

Avda. Camí dels Capellans, 81
Local 3 Sitges
Tel: +34 93 809 72 40



Contact us for more information or to arrange a viewing

Tel: +34 93 809 72 40

sitges@premiumhouses.com

www.premiumhouses.es