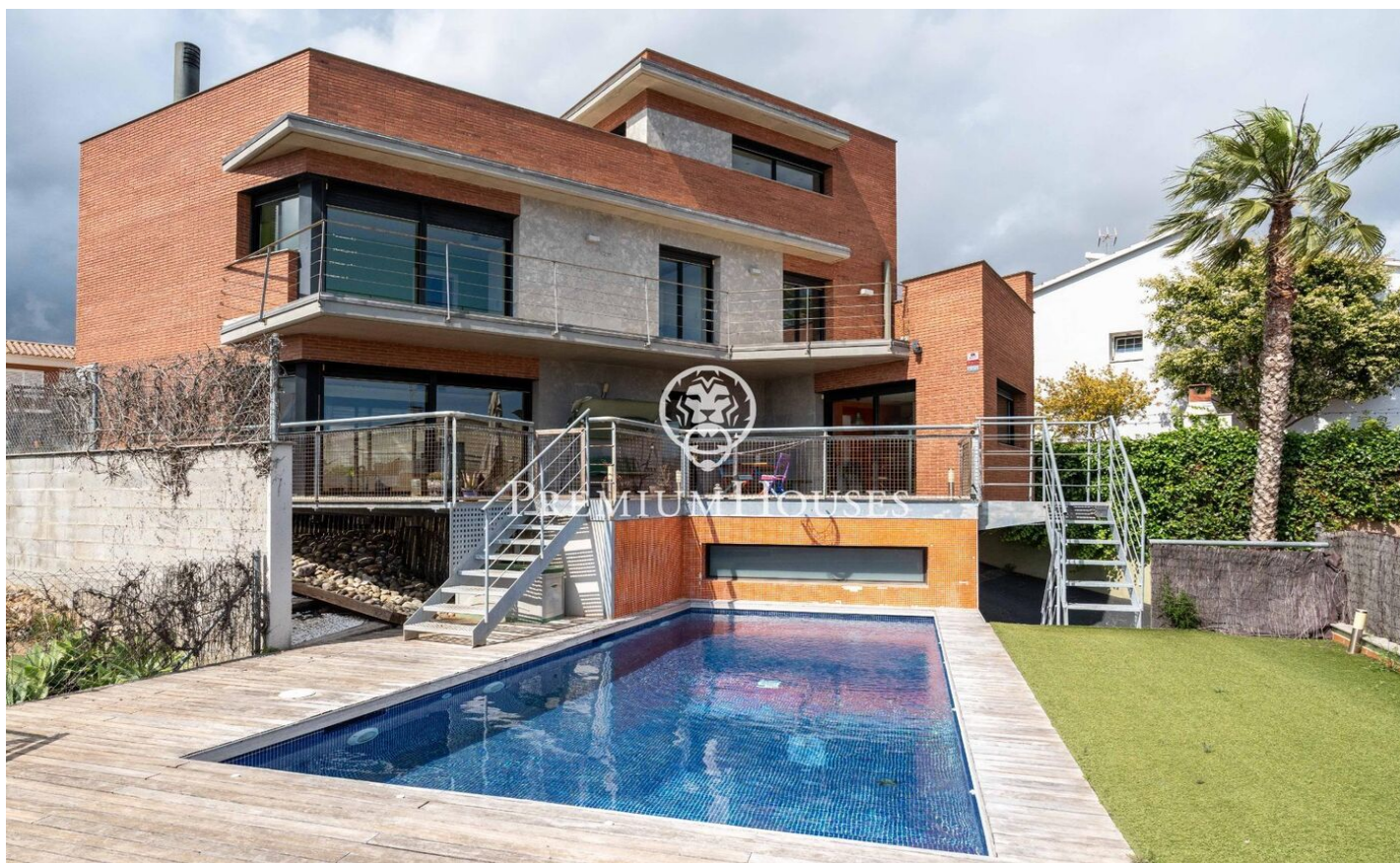




Modern House with Sea Views in Santa María

Ref: PHS101102



Vilanova i la Geltrú / Barcelona Costa Sur

In the Santa María neighborhood of Vilanova i la Geltrú, we find this modern house with unobstructed sea views. The property faces south. Additionally, the property has a garden and pool. The house has four floors. On the ground floor, we find the living area. It consists of a living-dining room and kitchen with access to the terrace. From the terrace, we enjoy unobstructed sea views and have access to the pool and garden. The upper floor also includes a double bedroom and a full bathroom. The first floor contains the sleeping area. It consists of a suite, two double bedrooms, and a shared bathroom. All have access to a terrace with sea views. The second floor has an open-plan space and a laundry room. From the open-plan space, we access a terrace with panoramic sea views. Finally, the basement has a garage with capacity for four cars and storage space. The entire home is connected by an elevator and also has solar panels for heating the water. The Santa María neighborhood of Vilanova i la Geltrú is characterized by its tranquility year-round. All this without sacrificing optimal access to the Barcelona highway.

€638,000

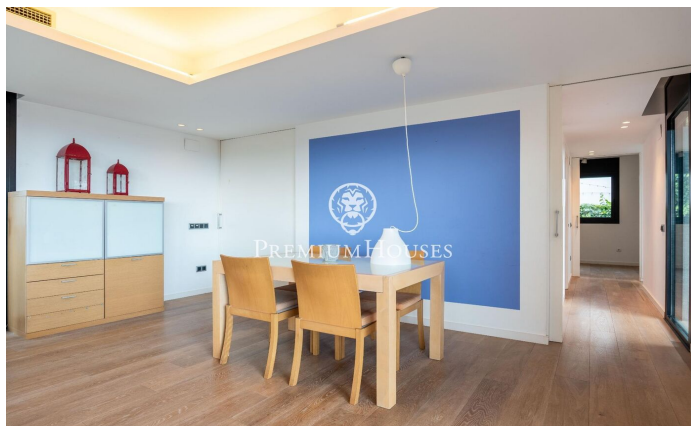
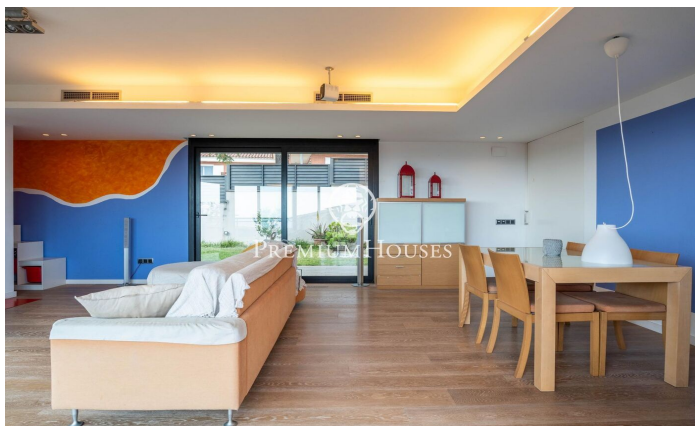
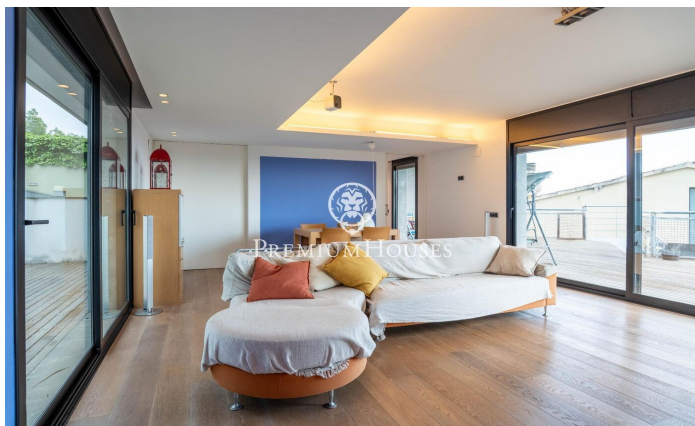
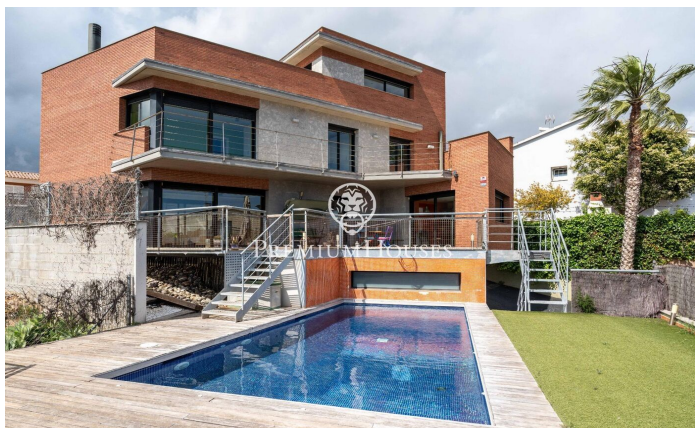
364 m²
4 Bedrooms
3 Bathrooms
519 m² plot
A/C
Heating
Sea views
Storage
Lift
Phone
Parking



PREMIUMHOUSES

Excellence in Real Estate

Avda. Camí dels Capellans, 81
Local 3 Sitges
Tel: +34 93 809 72 40

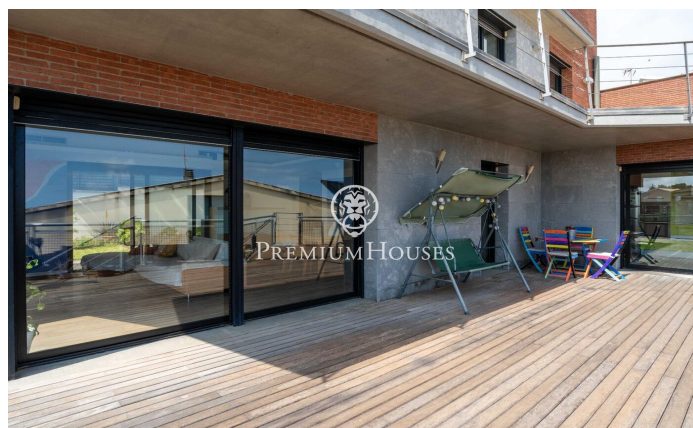
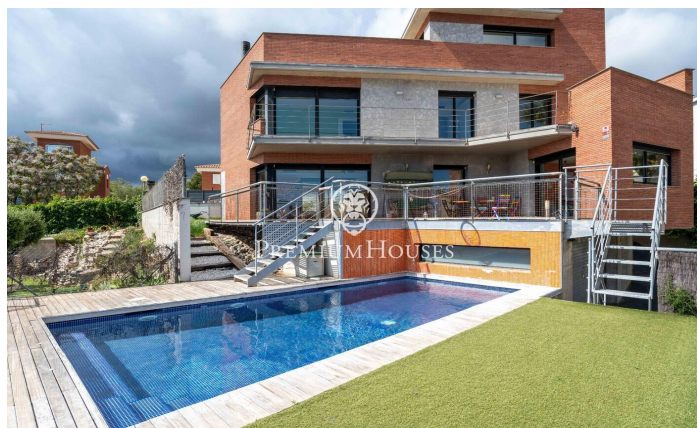
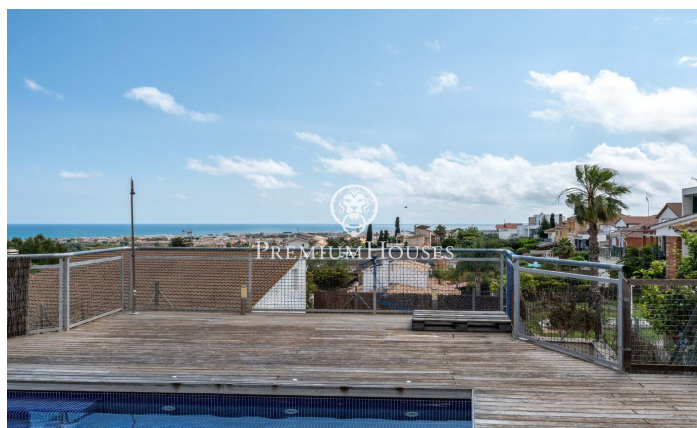
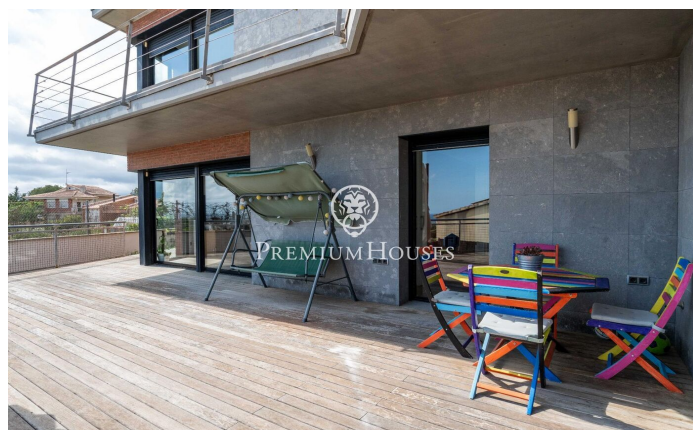




PREMIUMHOUSES

Excellence in Real Estate

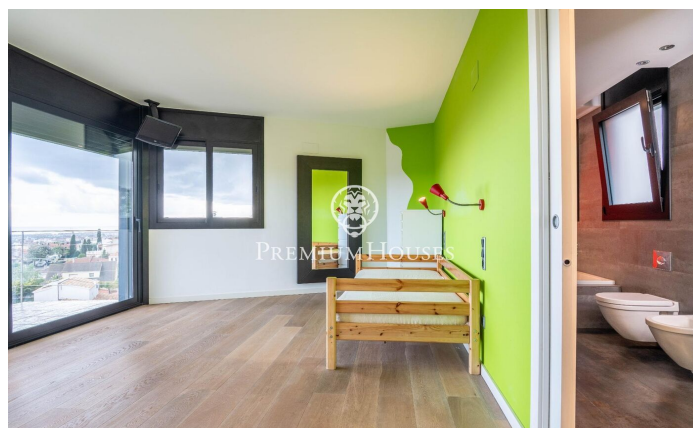
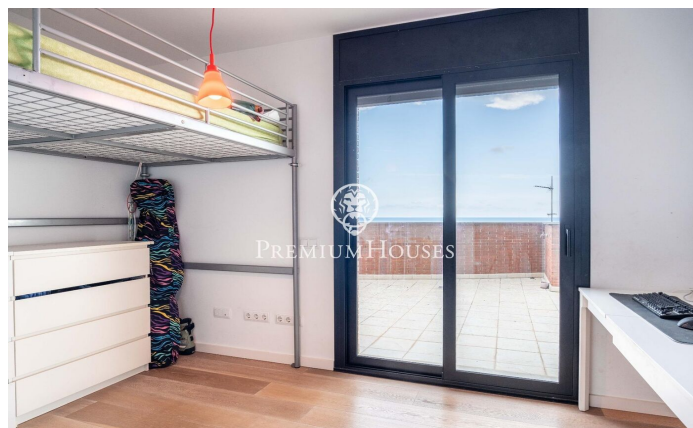
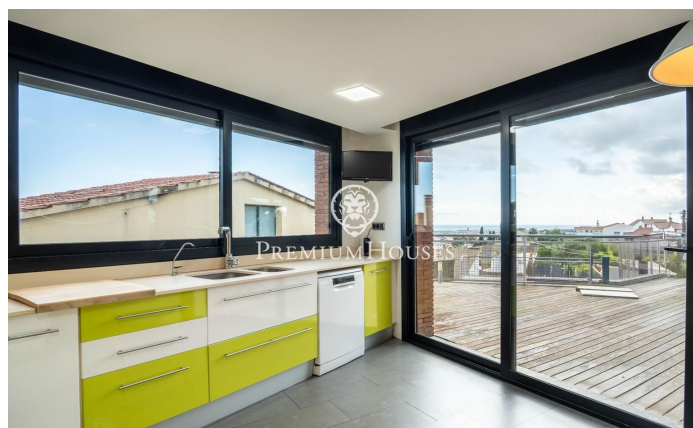
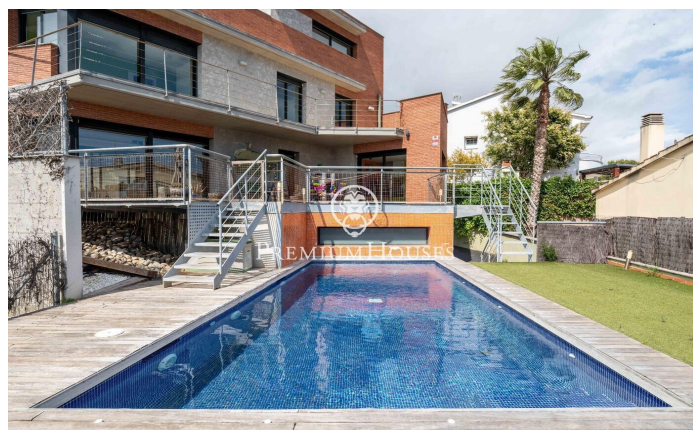
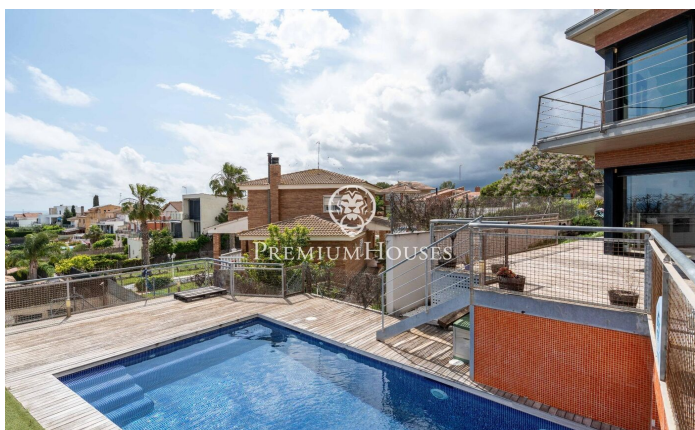
Avda. Camí dels Capellans, 81
Local 3 Sitges
Tel: +34 93 809 72 40





PREMIUMHOUSES
Excellence in Real Estate

Avda. Camí dels Capellans, 81
Local 3 Sitges
Tel: +34 93 809 72 40



Contact us for more information or to arrange a viewing

Tel: +34 93 809 72 40

sitges@premiumhouses.com

www.premiumhouses.es