



House With Garden in Molí de Vent

Ref: PHS101071



Vilanova i la Geltrú / Barcelona Costa Sur

In the Molí de Vent neighbourhood we find this semi-detached house with a charming patio and barbecue. The property has a large garage with capacity for two cars. The house is divided into four floors. On the first floor we find the day area which consists of a living-dining room with a glazed area and a large kitchen with access to the balcony. A full bathroom serves the floor. On the second floor we have the night area which consists of four bedrooms; two doubles, two singles and a full bathroom. On the third floor we find an attic with access to a solarium with sea views. On the ground floor we find a large hall and a garage with access to the patio. Additionally, there is also a laundry room and a pantry. The Molí de Vent neighbourhood of Vilanova i la Geltrú is a residential area surrounded by all essential services and exceptionally quiet. It is a twenty minute walk from the Rambla Principal, ten minutes from the beach and connected by constant buses to the centre and the station.

€425,000

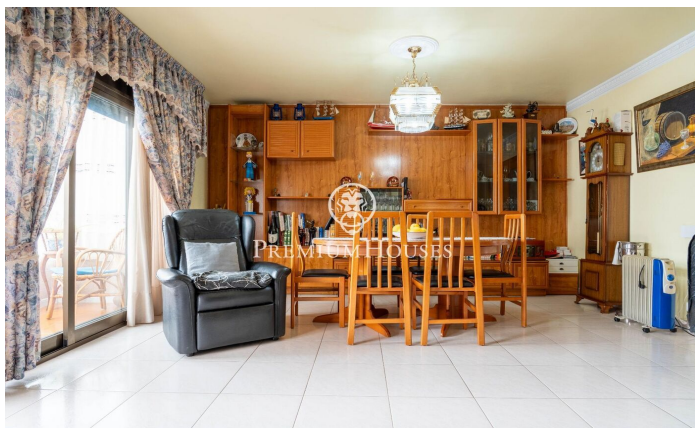
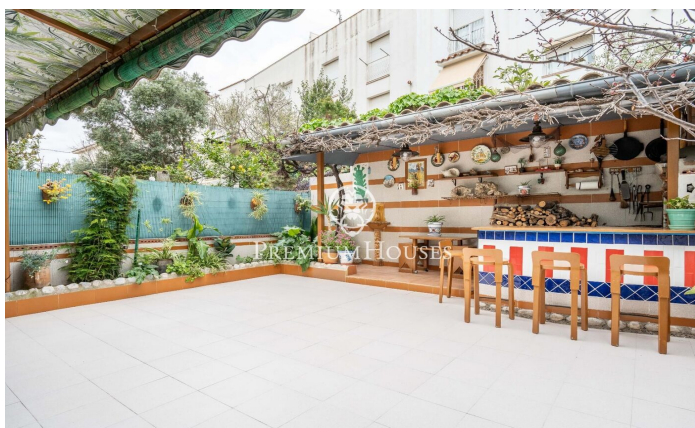
217 m²
4 Bedrooms
2 Bathrooms
112 m² plot
A/C
Heating
Backyard
Phone
Fireplace
Parking
Terrace
Balcony



PREMIUMHOUSES

Excellence in Real Estate

Avda. Camí dels Capellans, 81
Local 3 Sitges
Tel: +34 93 809 72 40

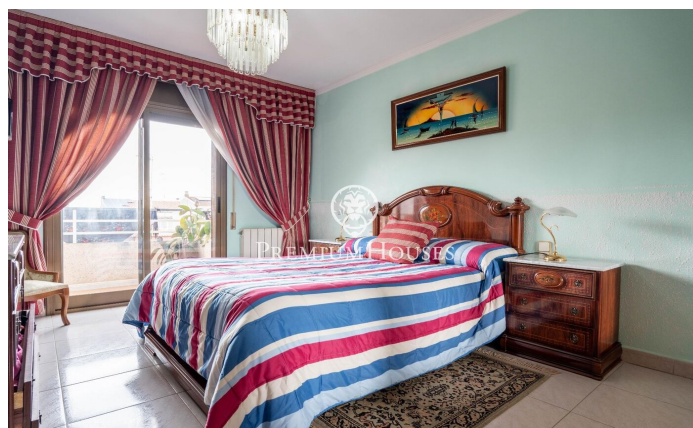
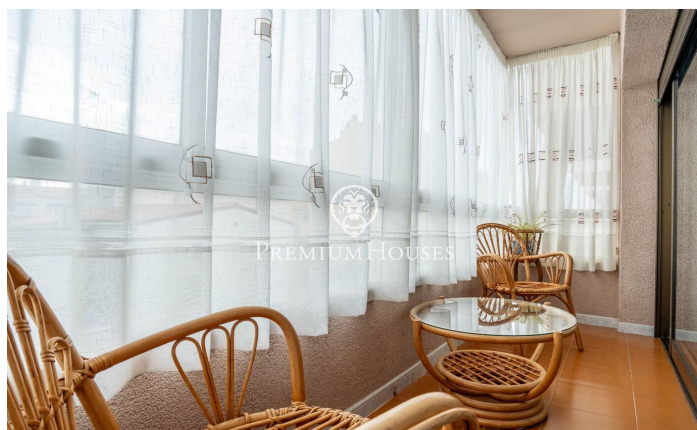




PREMIUMHOUSES

Excellence in Real Estate

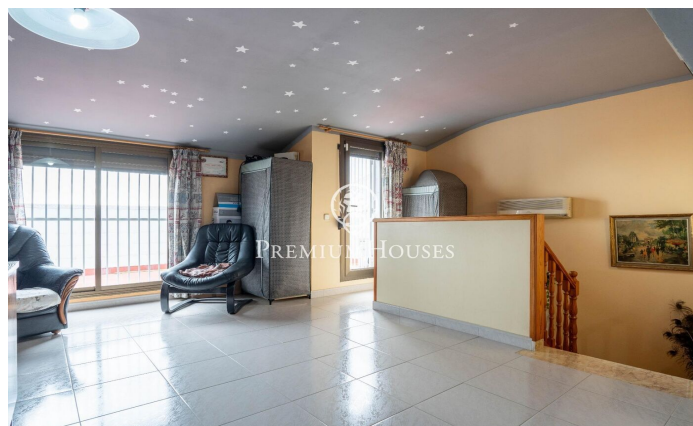
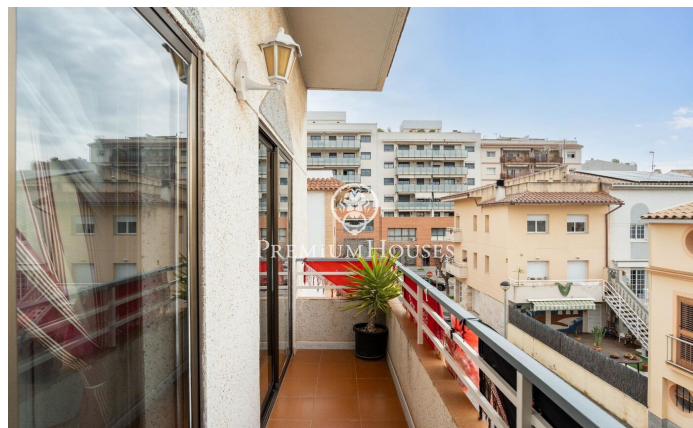
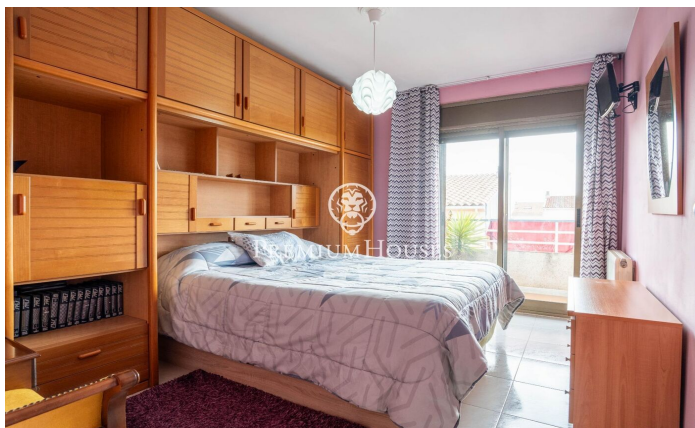
Avda. Camí dels Capellans, 81
Local 3 Sitges
Tel: +34 93 809 72 40





PREMIUMHOUSES
Excellence in Real Estate

Avda. Camí dels Capellans, 81
Local 3 Sitges
Tel: +34 93 809 72 40



Contact us for more information or to arrange a viewing

Tel: +34 93 809 72 40

sitges@premiumhouses.com

www.premiumhouses.es