



Exclusive Beachfront House

Ref: PHS100899



Vilanova i la Geltrú / Barcelona Costa Sur

In the municipality of Vilanova i la Geltrú we find the Chalet de la Sal. This impressive property is located in front of the sea and has great privacy since it has no neighbors. The property is distributed in two floors. The day area is made up of two living rooms, one of them with a fireplace for winter and another for summer with spectacular views of the Mediterranean. In this same space we have the dining room. From the living room there is direct access to the garden with pool and spectacular views of the sea. The floor has a completely renovated kitchen with a dining space and access to the garden. Additionally, there is a full bathroom that serves the floor. On the second floor we find 3 double rooms of which one is en suite. Additionally, there is a living room, a single room and a full bathroom that serves the floor. The house is located a stone's throw from Vilanova i la Geltrú and all its essential services. The municipality has a marina and a great gastronomic offer.

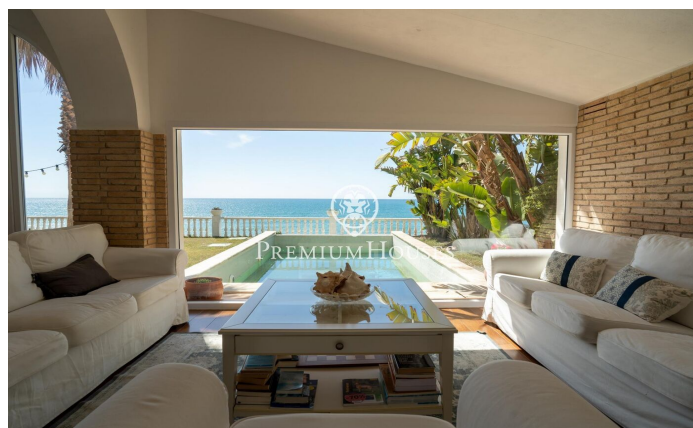
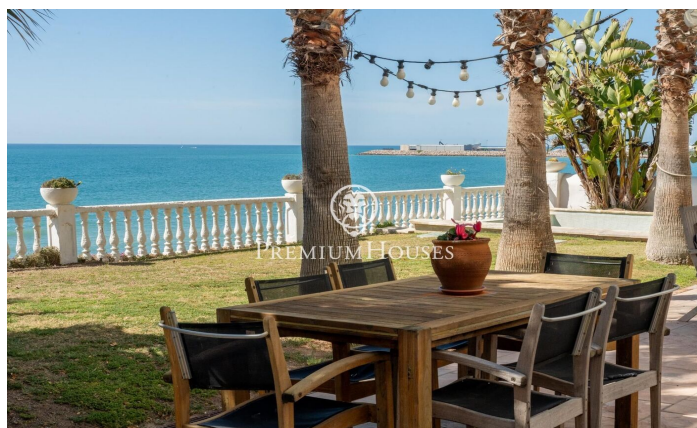
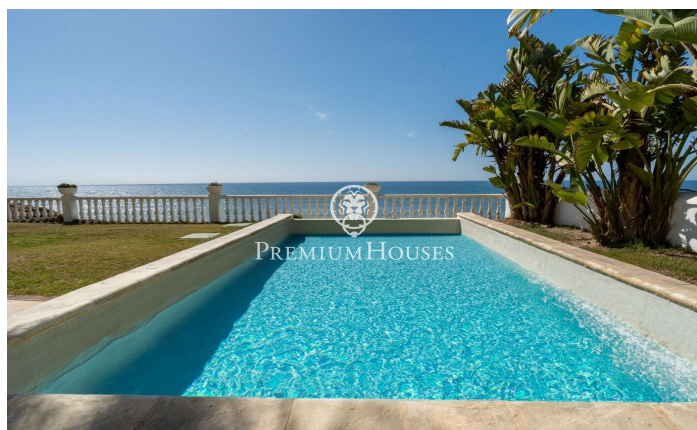
€3,900,000

290 m²
5 Bedrooms
3 Bathrooms
500 m² plot
Pool
A/C
Heating
Sea views
Storage
Furnished
Fireplace
Built in closets



PREMIUMHOUSES
Excellence in Real Estate

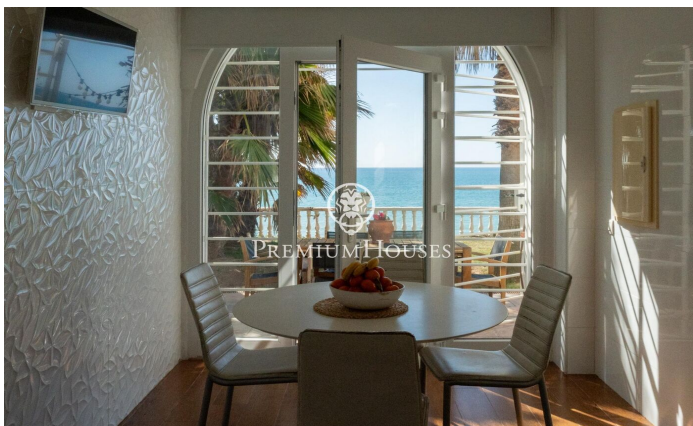
Avda. Camí dels Capellans, 75
Local 4 Sitges
Tel: +34 93 809 72 40





PREMIUMHOUSES
Excellence in Real Estate

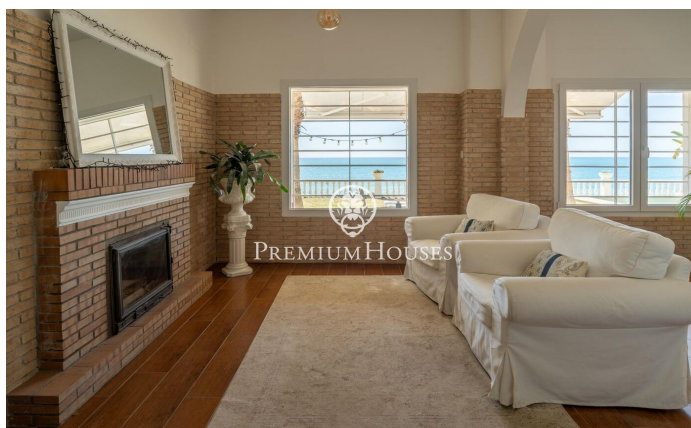
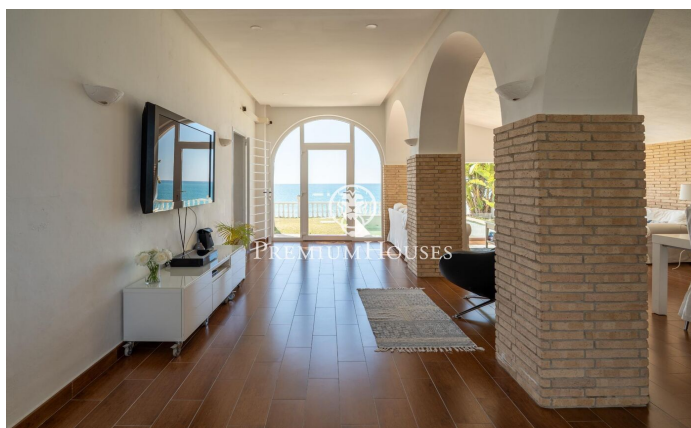
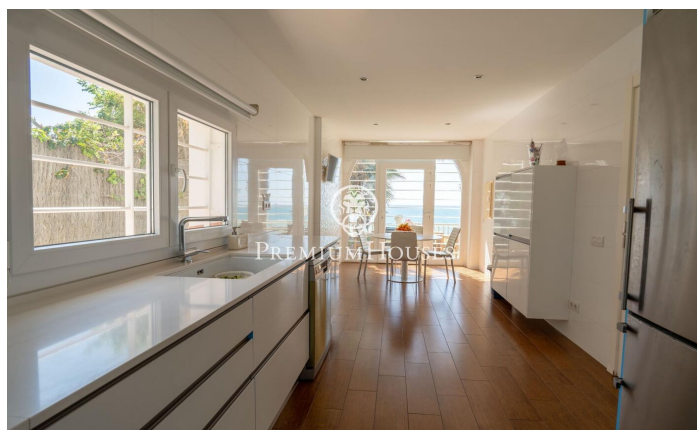
Avda. Camí dels Capellans, 75
Local 4 Sitges
Tel: +34 93 809 72 40





PREMIUMHOUSES
Excellence in Real Estate

Avda. Camí dels Capellans, 75
Local 4 Sitges
Tel: +34 93 809 72 40



Contact us for more information or to arrange a viewing

Tel: +34 93 809 72 40

sitges@premiumhouses.com

www.premiumhouses.es