

Corner Apartment in the Centre of Vilanova i la Geltrú

Ref: PHS101328

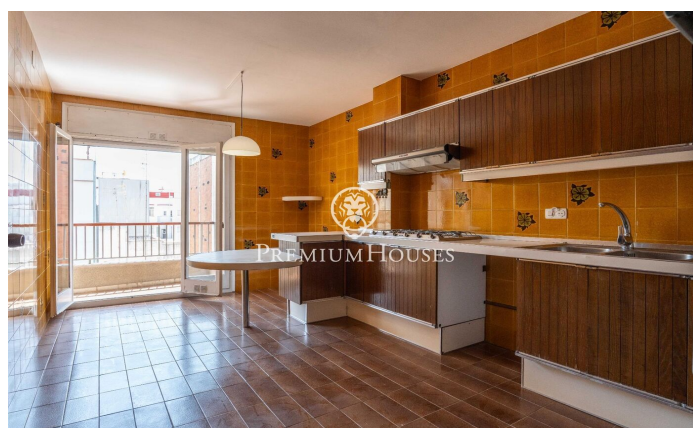
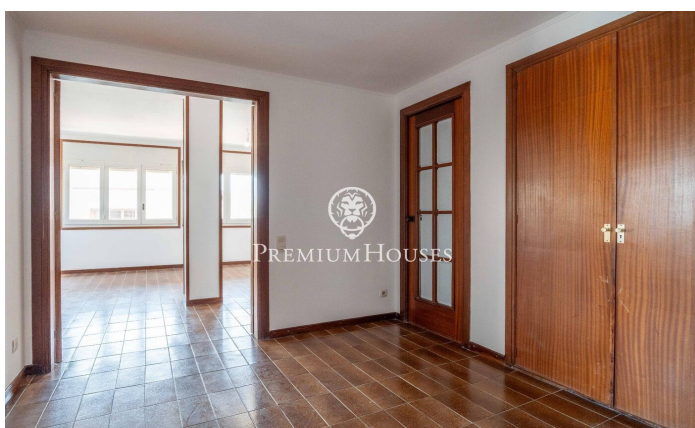
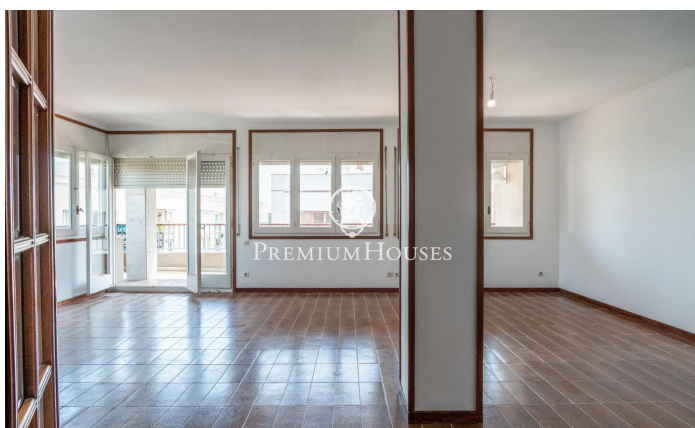
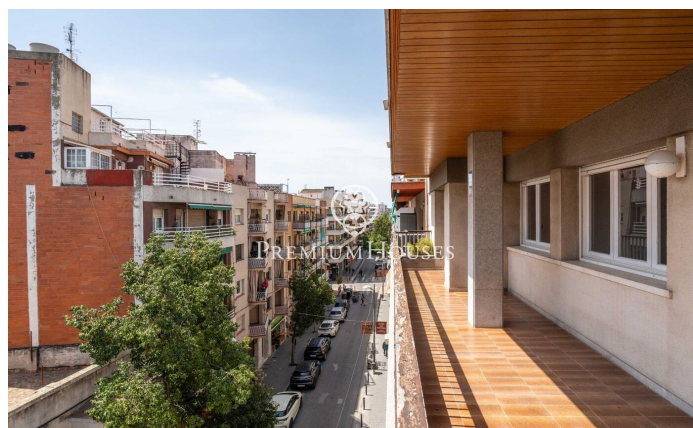
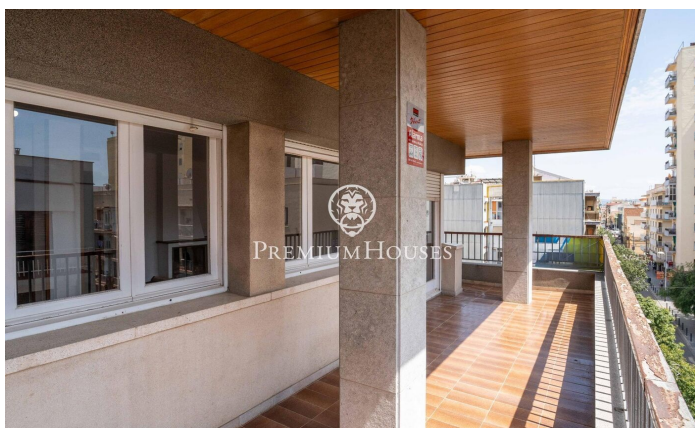
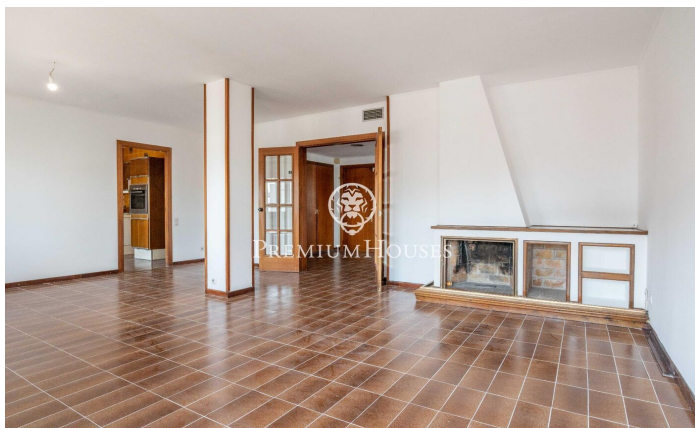


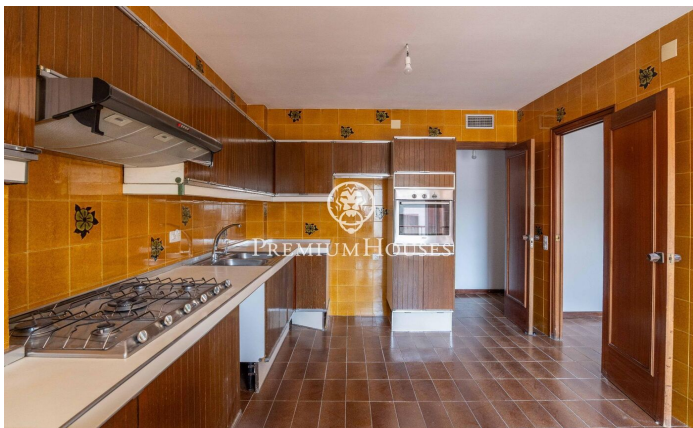
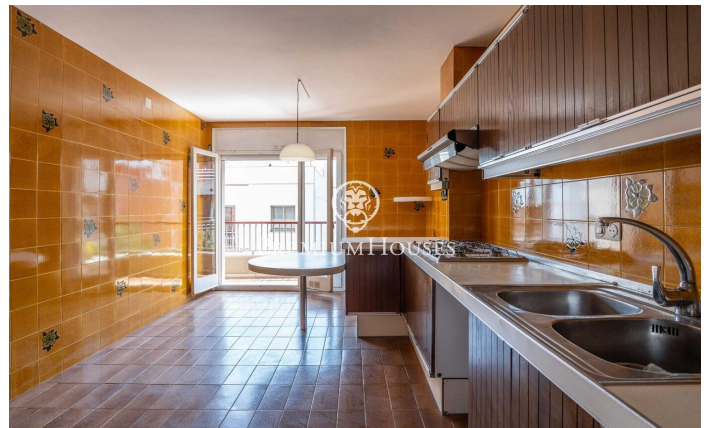
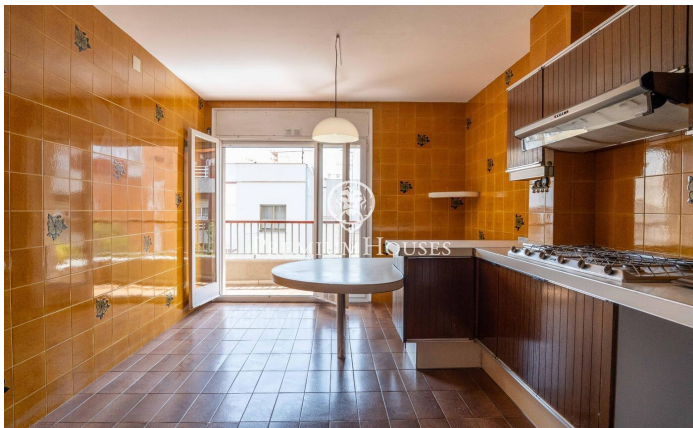
Vilanova i la Geltrú / Barcelona Costa Sur

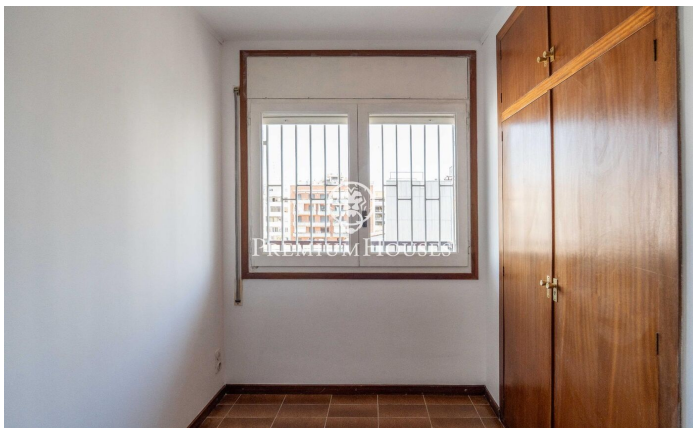
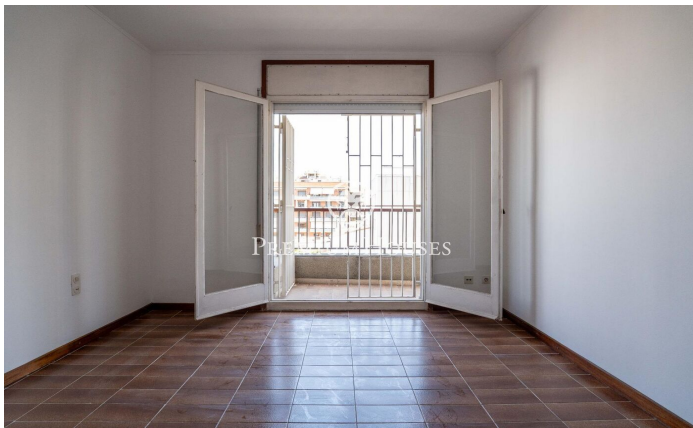
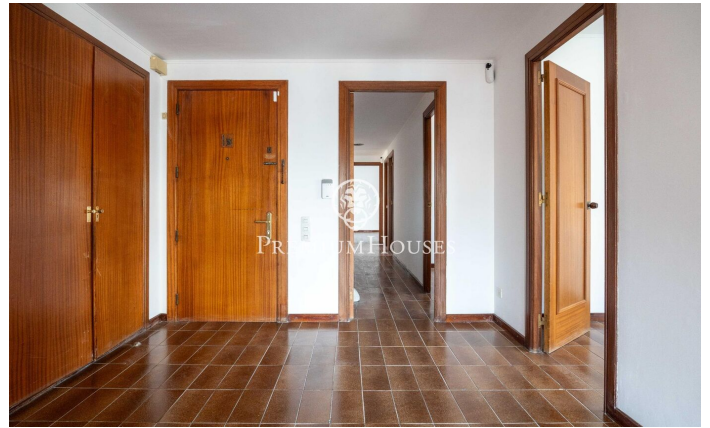
In the heart of Vilanova i la Geltrú, we find this spacious 185 m² apartment in need of renovation. The corner unit is very bright and features a south-facing terrace. This property is located in a building with an elevator and only five apartments. Upon entering the apartment, you'll find a large foyer with built-in wardrobes. The living area comprises a spacious and bright living room with a fireplace and access to the terrace. Adjacent to this is the kitchen, also connected to the terrace, and a utility room. This area also includes a guest toilet. The sleeping area currently has six bedrooms. The master suite includes a small dressing area that connects to the bathroom, and right next to it is another double bedroom. There are four single bedrooms, three of which have built-in wardrobes. Another full bathroom serves these bedrooms. The apartment is located in the city center, with all amenities within walking distance and just minutes from the municipal market and the main Rambla.

€495,000

185 m²
6 Bedrooms
2 Bathrooms
Heating
Lift
Fireplace
Balcony
Built in closets







Contact us for more information or to arrange a viewing

Tel: +34 93 809 72 40

sitges@premiumhouses.com

www.premiumhouses.es