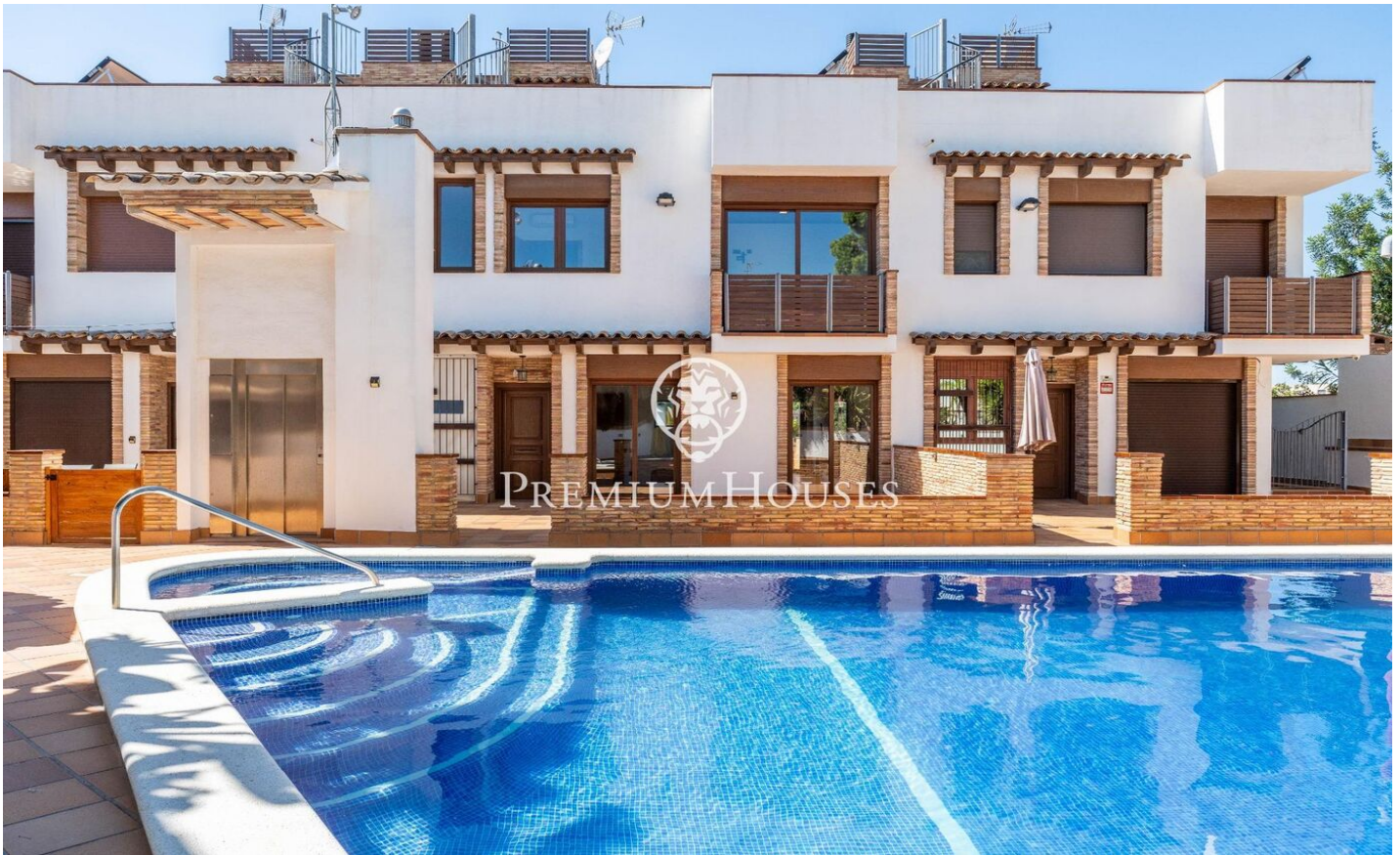




## Charming Townhouse in Fondo Somella

Ref: PHS100984



### Vilanova i la Geltrú / Barcelona Costa Sur

In the Fondo Somella neighborhood of Vilanova i la Geltrú, this charming semi-detached house is for sale in very good condition. The house has high ceilings that give a lot of light and space to the rooms. The house has a garden, a community pool and an elevator. The property is divided into three floors. On the main floor we have a living-dining room. It has access to two terraces. One of them is connected to the garden and the other to the community area. Next there is a separate kitchen with laundry room. On the same floor there is a double bedroom and a bathroom that serves the entire floor. The second floor is distributed in two double rooms, a single room and a full bathroom that the rooms share. All bedrooms have built-in wardrobes. On the roof there is a solarium with solar panels and a satellite dish. On the underground floor there are built-in wardrobes, a huge garage, common machine rooms and an elevator. The Fondo Somella neighborhood of Vilanova i la Geltrú is characterized by enjoying great peace and tranquility throughout the year. All this without giving up an optimal connection with Cubelles and the highway.

**€449,000**

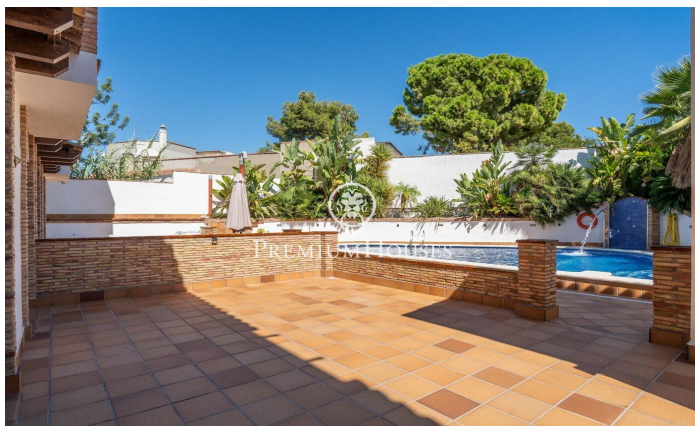
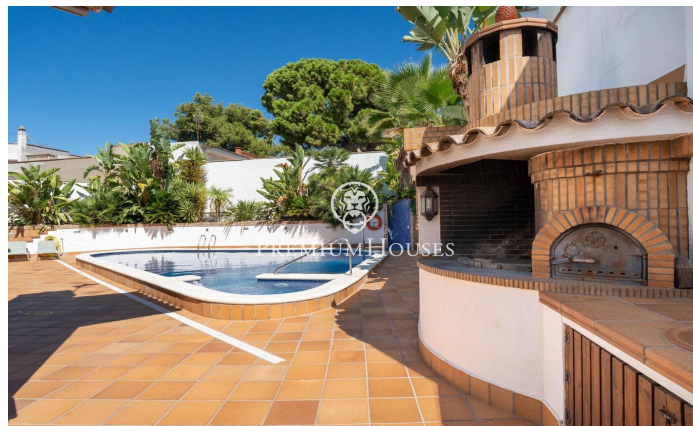
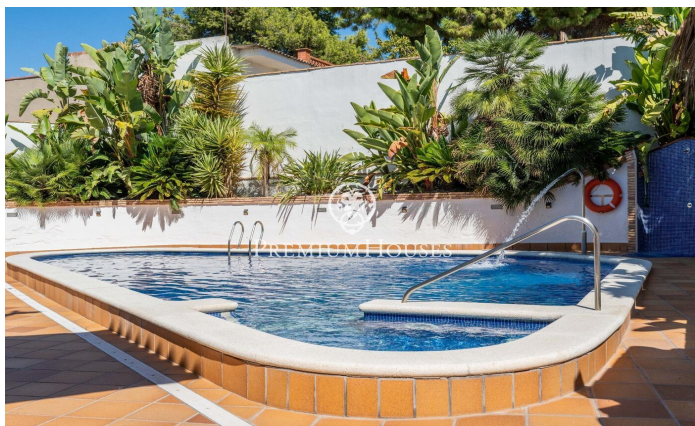
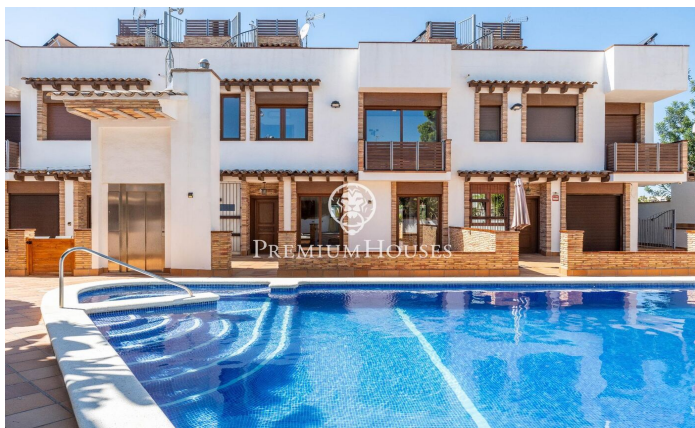
186 m<sup>2</sup>  
4 Bedrooms  
2 Bathrooms  
Pool  
A/C  
Heating  
Sea views  
Storage  
Lift  
Phone  
Fireplace  
Parking  
Built in closets



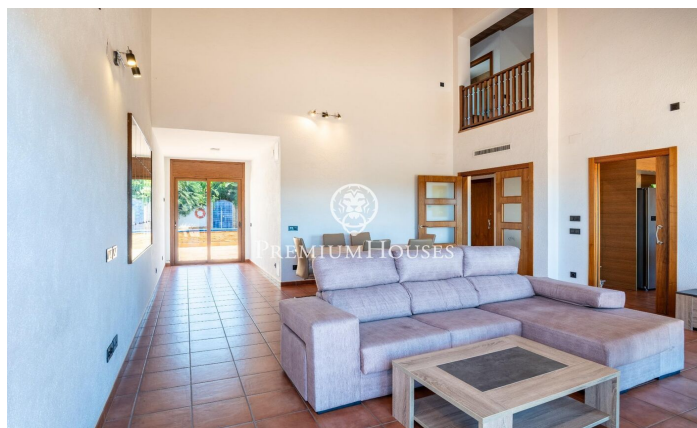
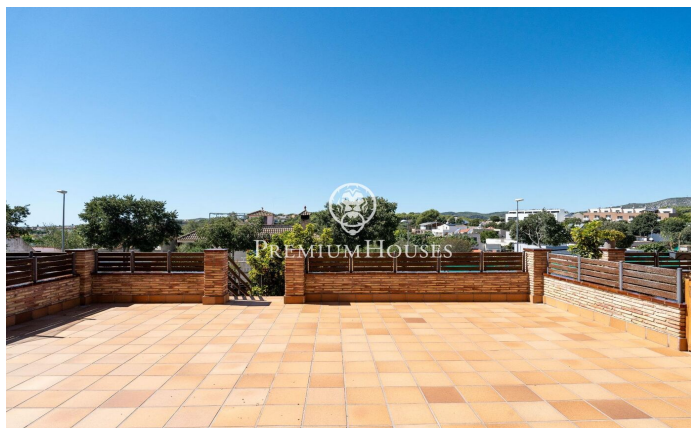


**PREMIUMHOUSES**  
Excellence in Real Estate

Avda. Camí dels Capellans, 75  
Local 4 Sitges  
Tel: +34 93 809 72 40





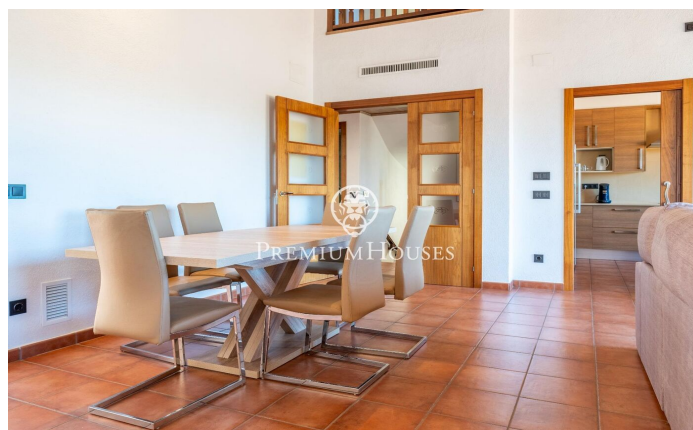






**PREMIUMHOUSES**  
Excellence in Real Estate

Avda. Camí dels Capellans, 75  
Local 4 Sitges  
Tel: +34 93 809 72 40



Contact us for more information or to arrange a viewing

Tel: +34 93 809 72 40

[sitges@premiumhouses.com](mailto:sitges@premiumhouses.com)

[www.premiumhouses.es](http://www.premiumhouses.es)