

Brand New Duplex Penthouse in Plaça de la Vila

Ref: PHS101266

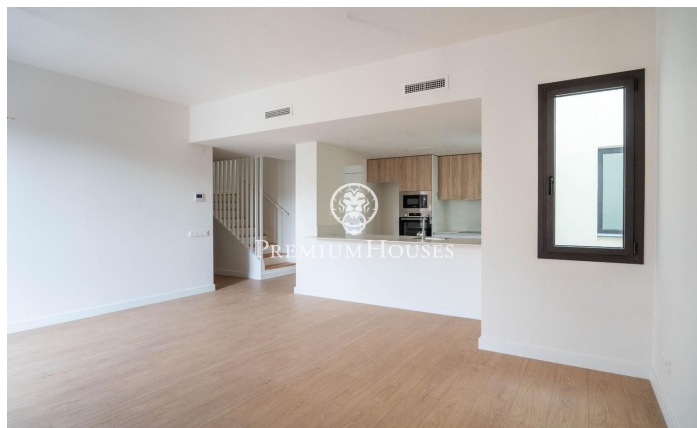
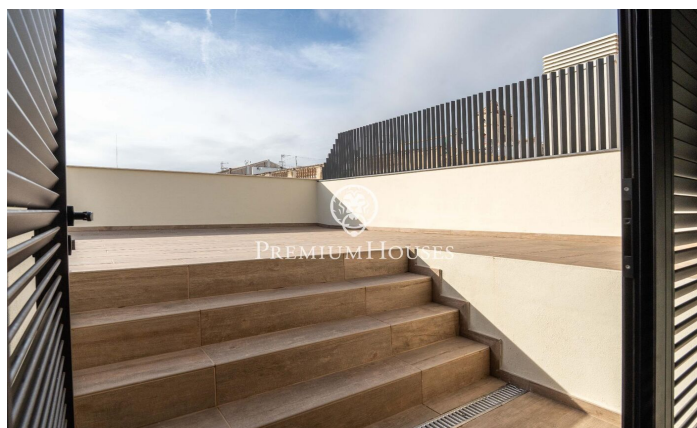
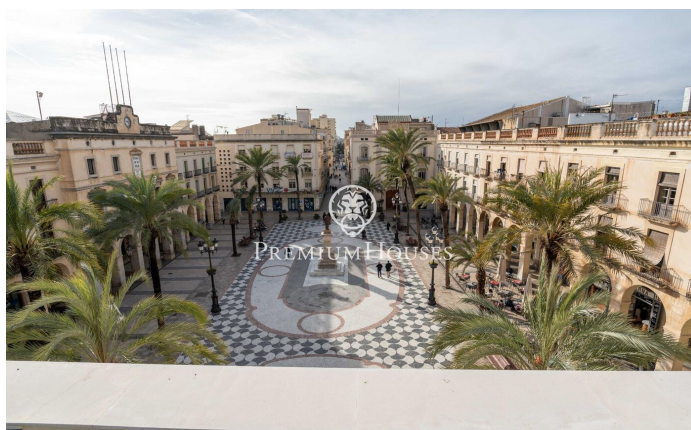


Vilanova i la Geltrú / Barcelona Costa Sur

In the heart of Vilanova i la Geltrú, right on Plaça de la Vila, we find this brand-new duplex penthouse with a spacious 40 m² terrace. The apartment is newly built and boasts beautiful views of the square. The building features a communal swimming pool, elevator, and underground parking. The property is divided into two floors. On the main floor, there is a large and bright living-dining room with an integrated kitchen. Next, there are three double bedrooms, one of which is en suite with a semi-open bathroom. Another full bathroom serves the rest of the floor. Upstairs, reaching top of the stairs, there is a full bathroom and a double bedroom with access to the 40 m² terrace and spectacular views of Plaça de la Vila. All bedrooms have large built-in wardrobes. There is the option to purchase a parking space and a storage room in the same building. The apartment is located in the heart of Vilanova i la Geltrú, in a pedestrian area, with all services at street level and a five-minute walk from the station.

€840,000

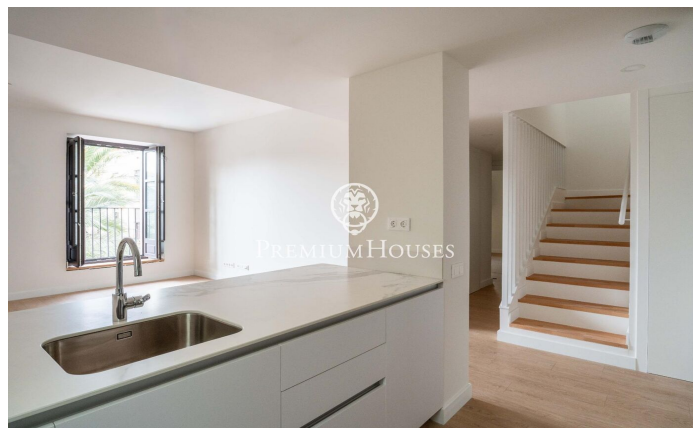
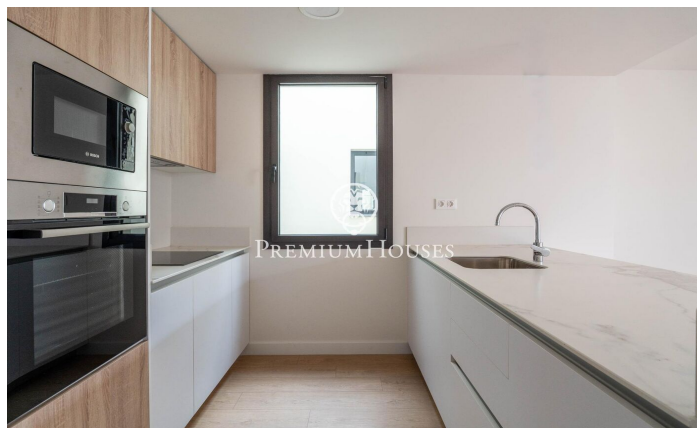
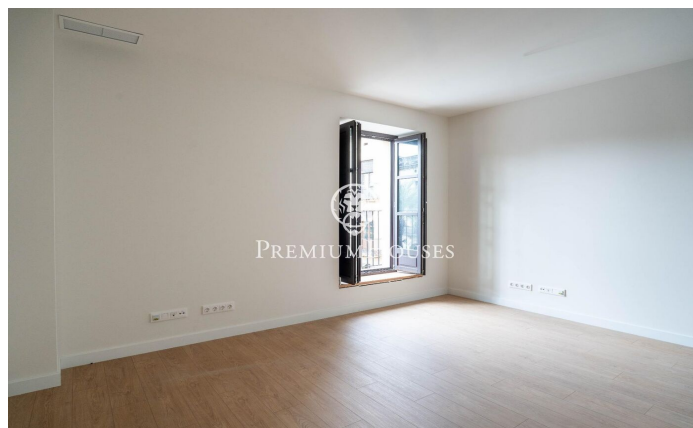
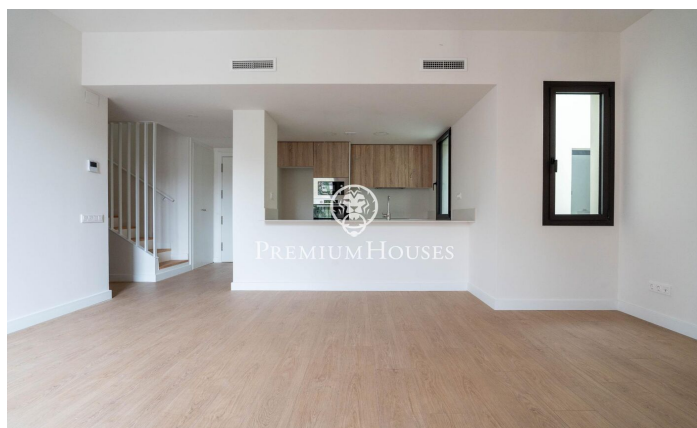
130 m²
4 Bedrooms
3 Bathrooms
Heating
Lift
Terrace
Built in closets





PREMIUMHOUSES
Excellence in Real Estate

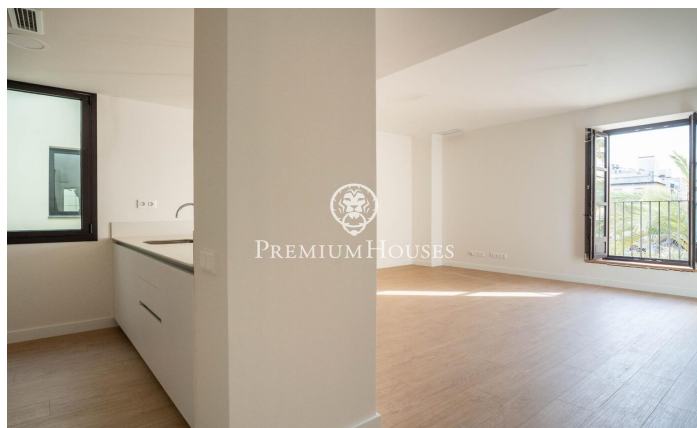
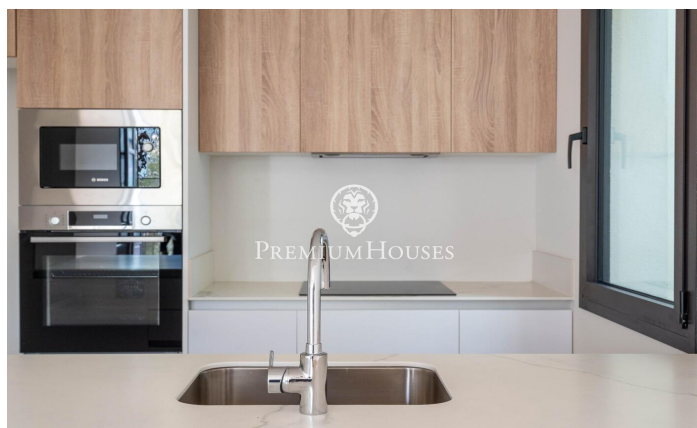
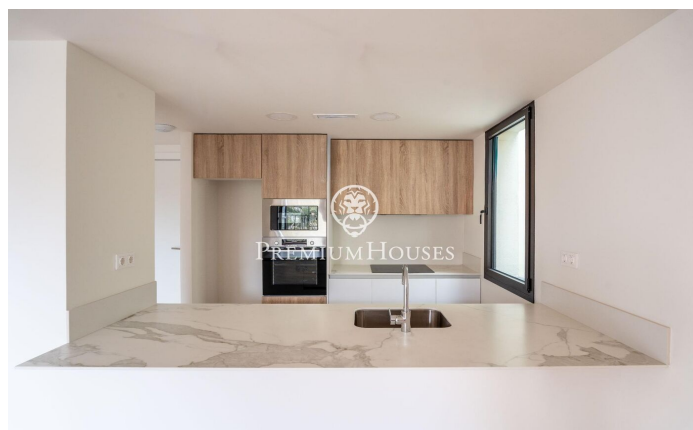
Avda. Camí dels Capellans, 75
Local 4 Sitges
Tel: +34 93 809 72 40





PREMIUMHOUSES
Excellence in Real Estate

Avda. Camí dels Capellans, 75
Local 4 Sitges
Tel: +34 93 809 72 40



Contact us for more information or to arrange a viewing

Tel: +34 93 809 72 40

sitges@premiumhouses.com

www.premiumhouses.es