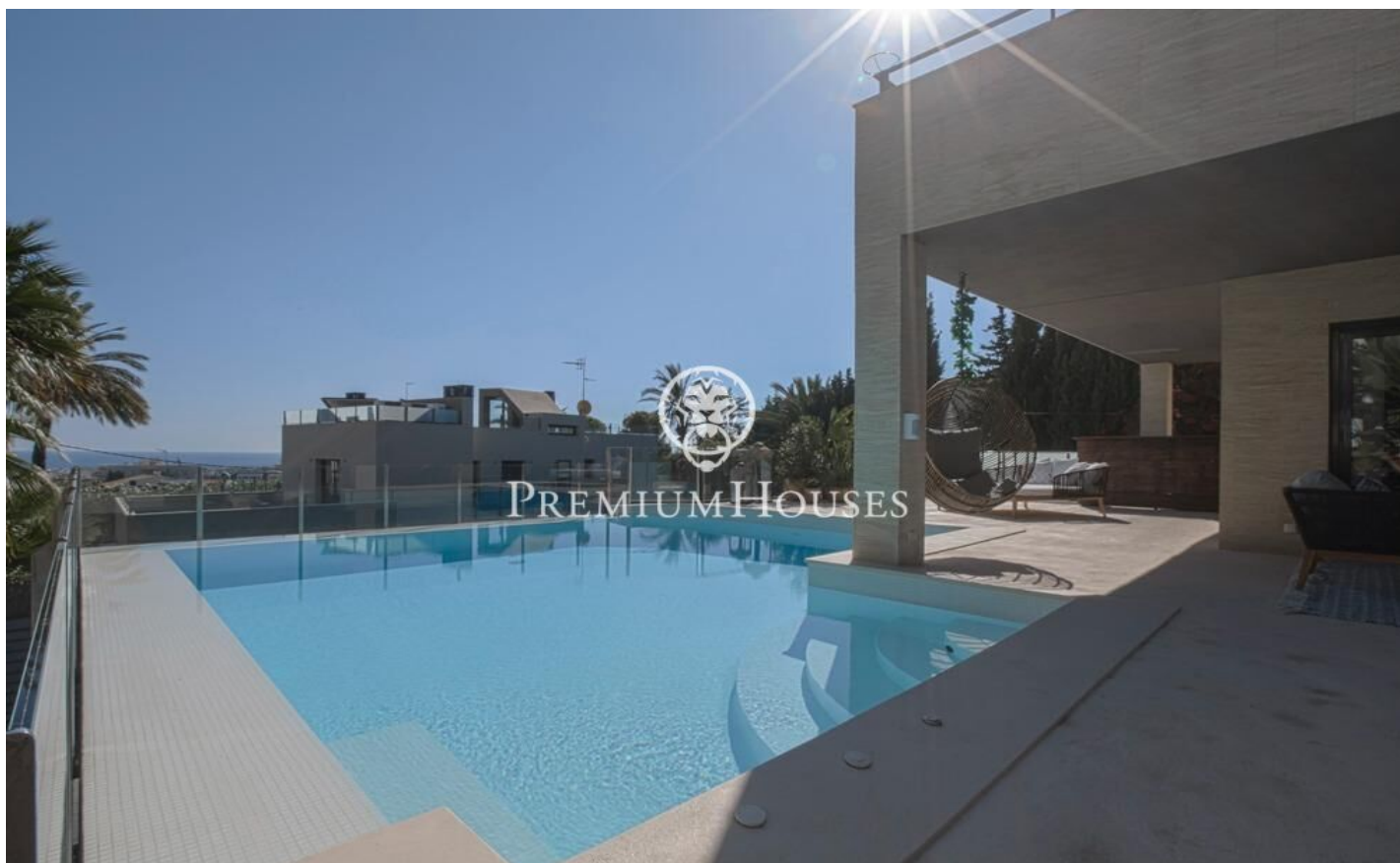


House with Sea Views in Vallpineda

Ref: PHS101253



Vallpineda / Sitges

Modern, Nordic-style detached house located at the entrance to Vallpineda, with beautiful sea views from every floor. Its 432 m² are distributed over two floors, a solarium, and a large basement with a garage. Built in 2009 and renovated in 2022, the house sits on a 755 m² plot. It boasts a lovely garden with a swimming pool that includes a cold plunge pool, an outdoor bathroom with shower, a separate hot/cold plunge pool, a large porch, and a children's play area with a lawn and a wooden playhouse that can even be used as a nap room. On the ground floor, there is a large 100 m² living-dining room and a fully equipped open-plan kitchen, a double bedroom, and a guest toilet. The first floor features the master suite with a 50 m² terrace, dressing room, and bathroom, a second suite, and two additional double bedrooms with a shared bathroom. The second floor comprises the solarium with a chill-out area. In the basement there is a four-car garage, a laundry room, a double bedroom and a full bathroom. The house has gas central heating, ducted air conditioning, aluminum windows, built-in wardrobes, parquet flooring, and an alarm system. It is in excellent condition. Vallpineda is a very quiet residential area with a concierge and a sports club offering tennis, paddle tennis, an...

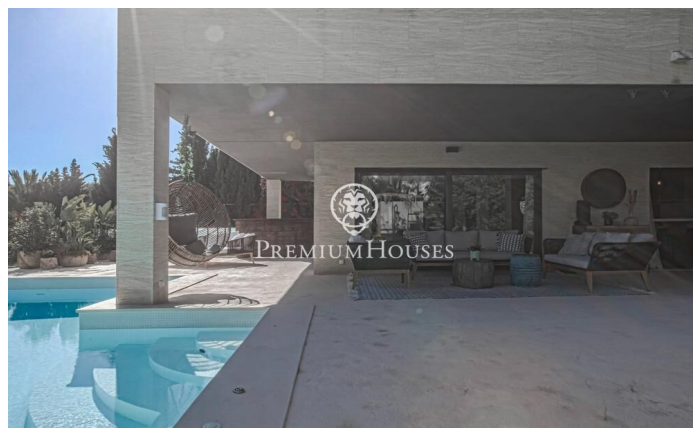
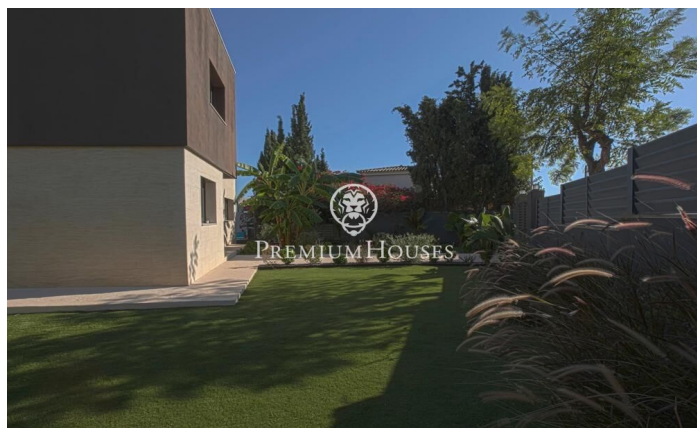
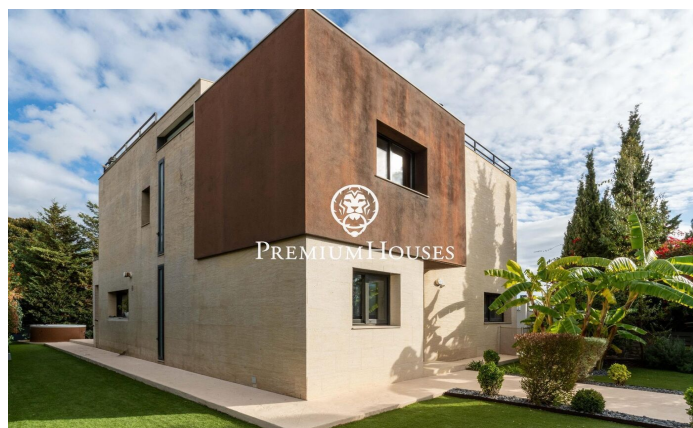
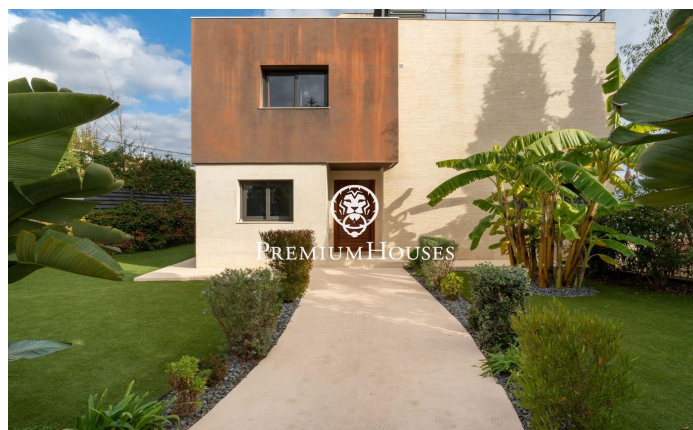
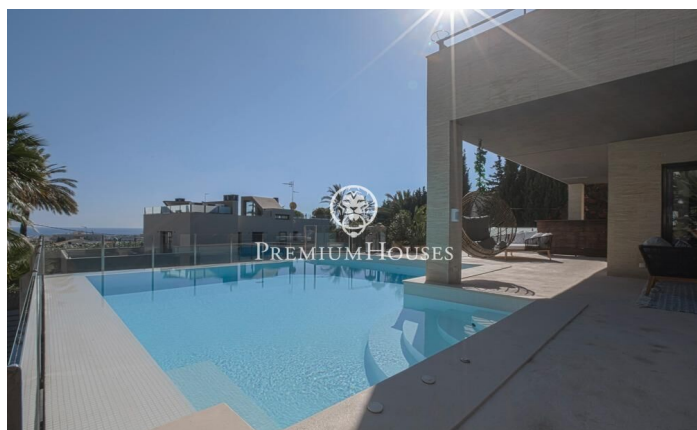
€1,750,000

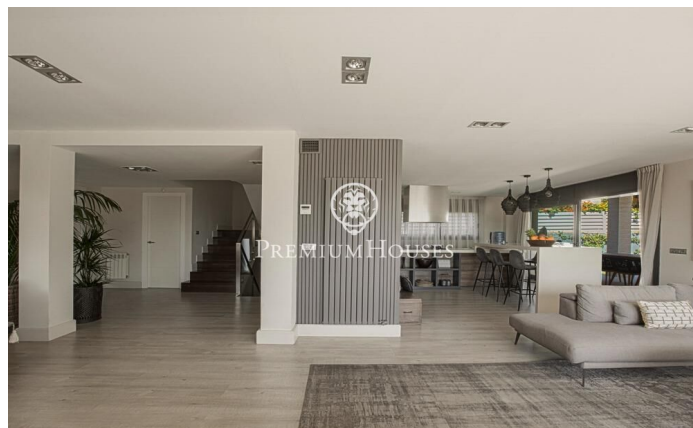
432 m²
6 Bedrooms
4 Bathrooms
755 m² plot
Heating
Sea views
Storage
Phone
Parking
Terrace
Balcony



PREMIUMHOUSES
Excellence in Real Estate

Avda. Camí dels Capellans, 75
Local 4 Sitges
Tel: +34 93 809 72 40

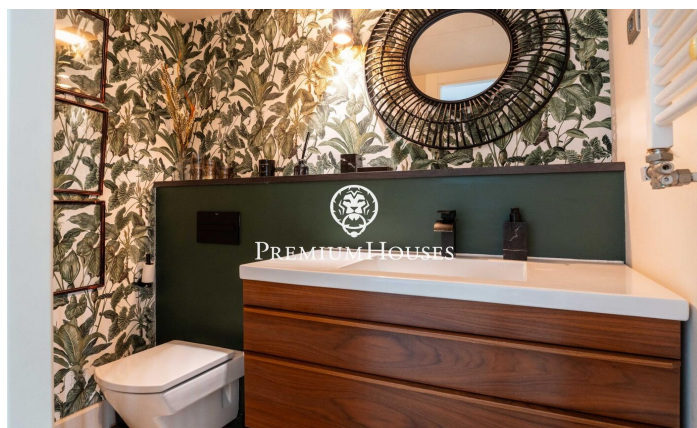
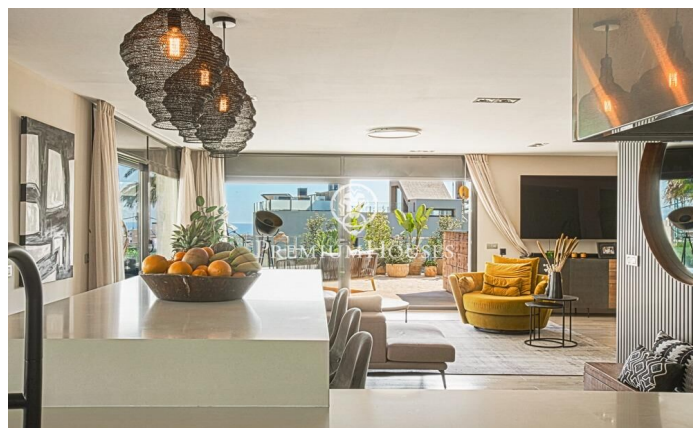






PREMIUMHOUSES
Excellence in Real Estate

Avda. Camí dels Capellans, 75
Local 4 Sitges
Tel: +34 93 809 72 40



Contact us for more information or to arrange a viewing

Tel: +34 93 809 72 40

sitges@premiumhouses.com

www.premiumhouses.es