

## Spectacular land for sale with sea views in Levantina Sitges

Ref: PHS100111



### Levantina / Sitges

Spectacular land for sale of 946 m2 in Levantina Sitges. This 946 m2 plot is located in one of the most privileged urbanizations in Sitges. This has the advantage of having spectacular views of the sea, enjoying tranquility and being a residential area but at the same time being close to the services of the town and with public transport that connects it. The plot has 946m2 without building and you can build a single-family home with a maximum floor area of 189 m2 and a total of 378 m2, on the ground floor + first floor + attic. Urban planning regulations (Key 14a – Extensive garden city zone): Minimum plot 400m2 Maximum buildability of 0.4 m2/m2 land Maximum occupancy 20% Minimum facade of 10m2 Maximum regulatory height 9.50m = ground floor + first floor + 50% attic floor Auxiliary construction with 5% occupancy Permitted use: Isolated building.

**€650,000**

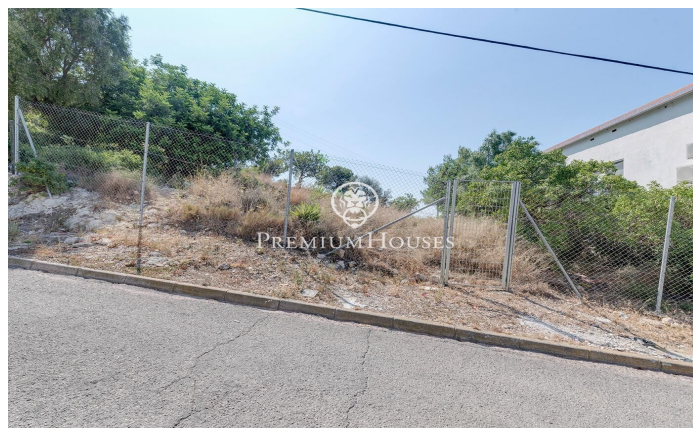
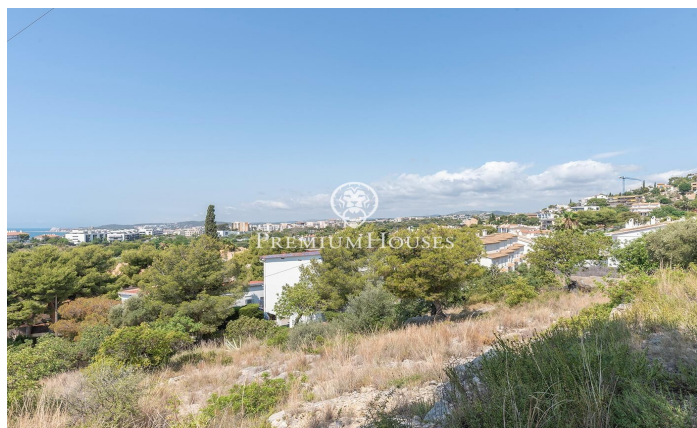
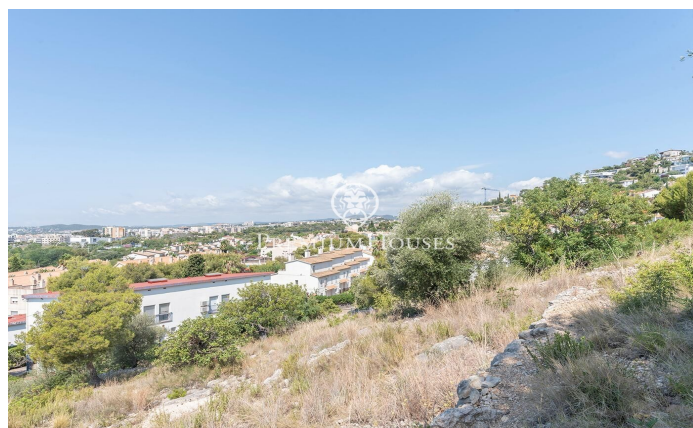
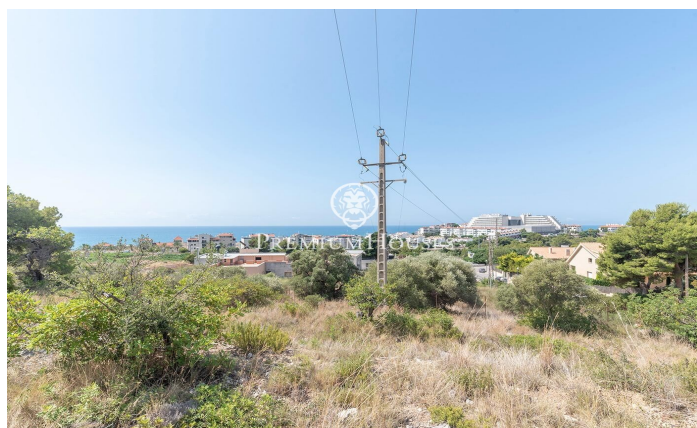
946 m<sup>2</sup> plot  
Sea views





**PREMIUMHOUSES**  
Excellence in Real Estate

Avda. Camí dels Capellans, 75  
Local 4 Sitges  
Tel: +34 93 809 72 40

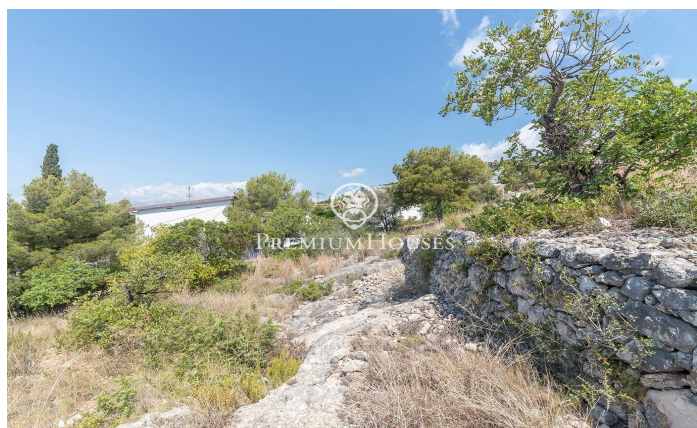
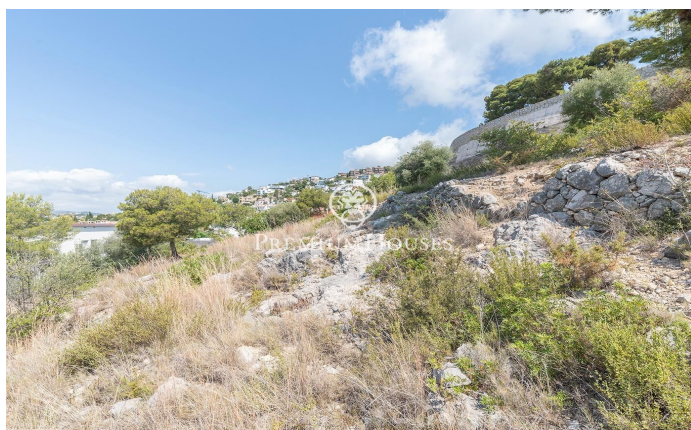
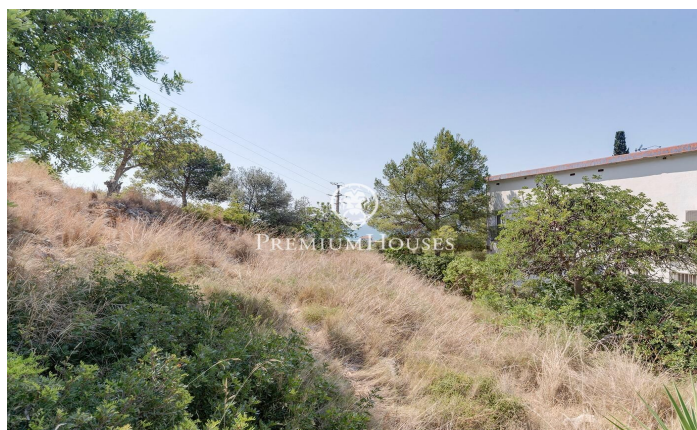






**PREMIUMHOUSES**  
Excellence in Real Estate

Avda. Camí dels Capellans, 75  
Local 4 Sitges  
Tel: +34 93 809 72 40



Contact us for more information or to arrange a viewing

Tel: +34 93 809 72 40

[sitges@premiumhouses.com](mailto:sitges@premiumhouses.com)

[www.premiumhouses.es](http://www.premiumhouses.es)

