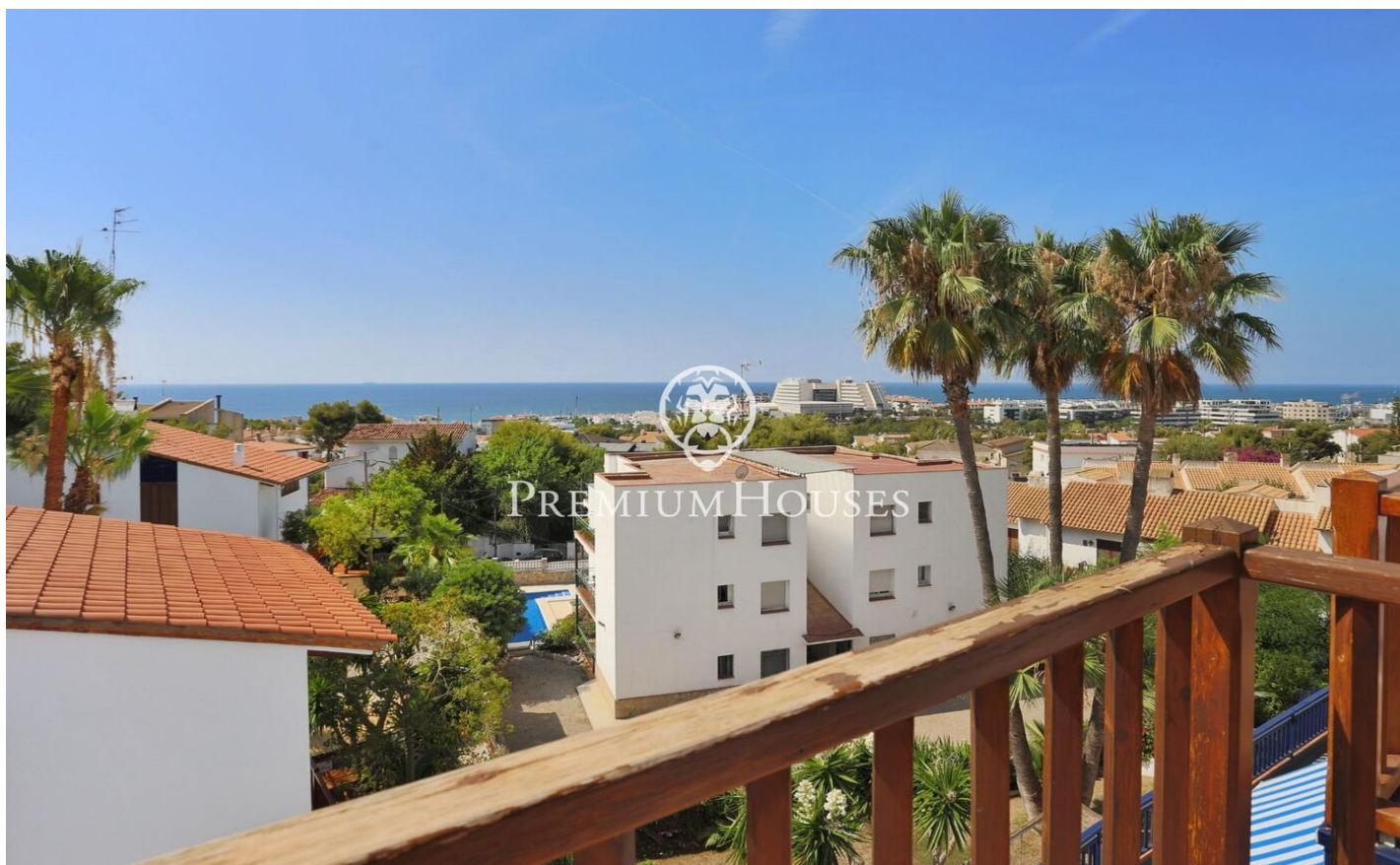




Semi-detached House with Sea Views in Levantina

Ref: PHS100787

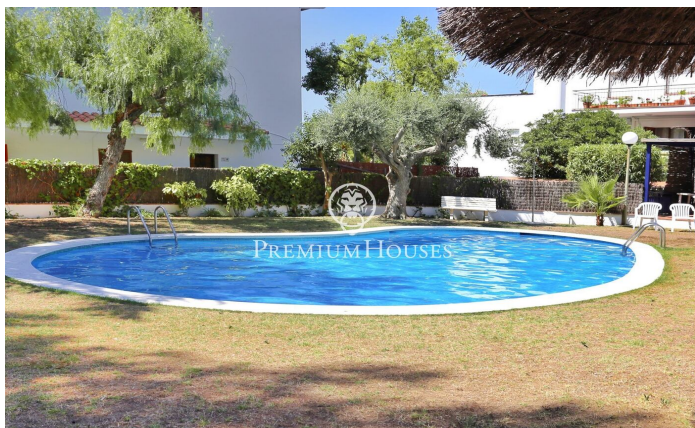
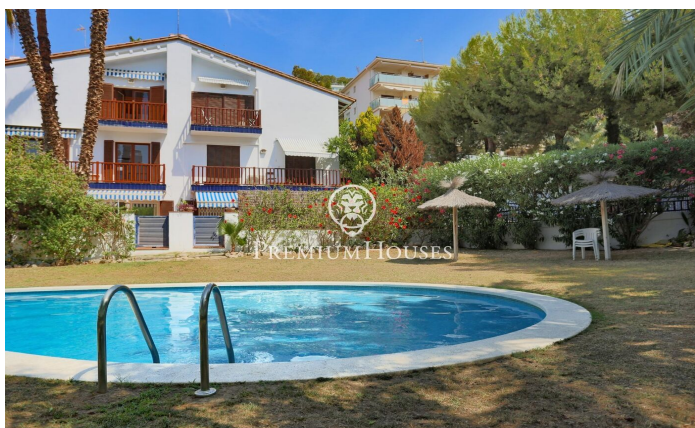
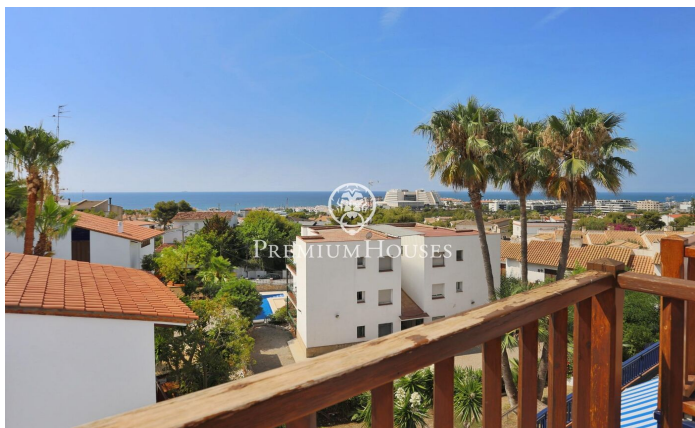


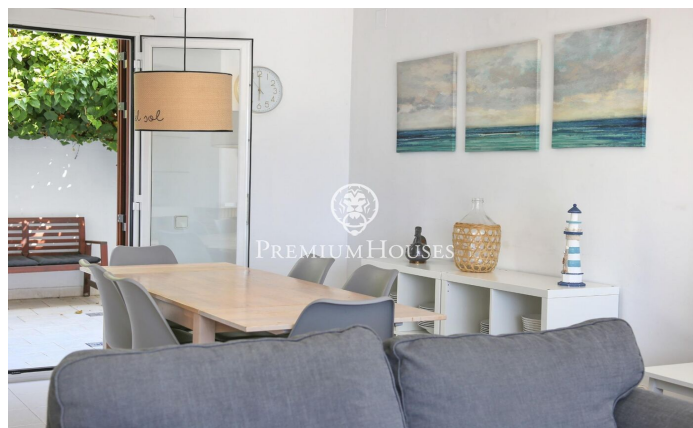
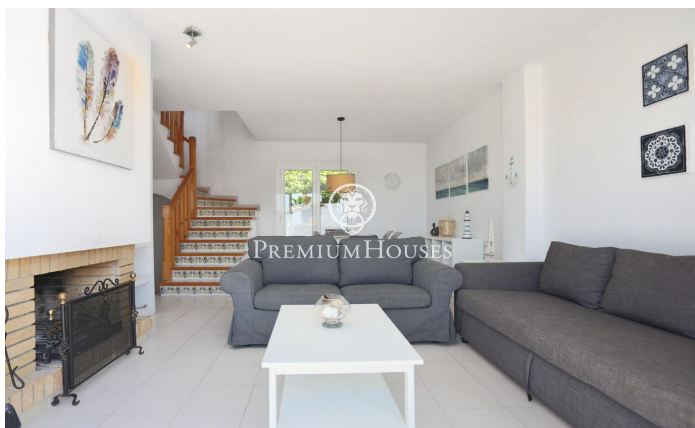
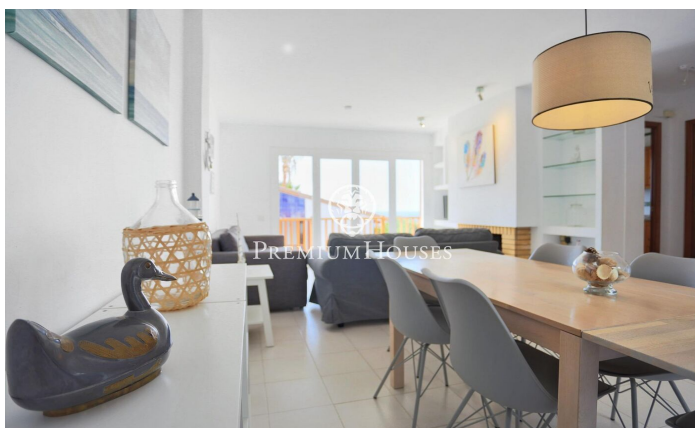
Levantina / Sitges

In Levantina we find this townhouse with sea views. The property has a large outdoor patio with an awning to enjoy throughout the year. The house is located in a complex with a landscaped community pool. The house has three floors. The first floor consists of a hall and a large garage with laundry space. Due to the configuration of the community, one car can be parked inside the parking lot and another additional car in front outside the house. On the first floor we have the day area. The main piece is the living-dining room with access to a large patio at the back of the house and a south-facing terrace with sea views. On the same floor we have a courtesy toilet and a separate kitchen. Finally, on the top floor we have the night area. It is made up of three double bedrooms with fitted wardrobes, two of them facing south and one of them facing north. The plant has a shared full bathroom to service the rooms. La Levantina is characterized by being a very quiet neighborhood a stone's throw from the Port of Aiguadolç. It has very fast communication with the Garraf curves and the C-32 motorway to Barcelona. Being located on the side of a mountain allows you to enjoy views of the town and the sea.

€525,000

144 m²
3 Bedrooms
1 Bathroom
Pool
Heating
Sea views
Storage
Furnished
Fireplace
Security
Terrace
Built in closets



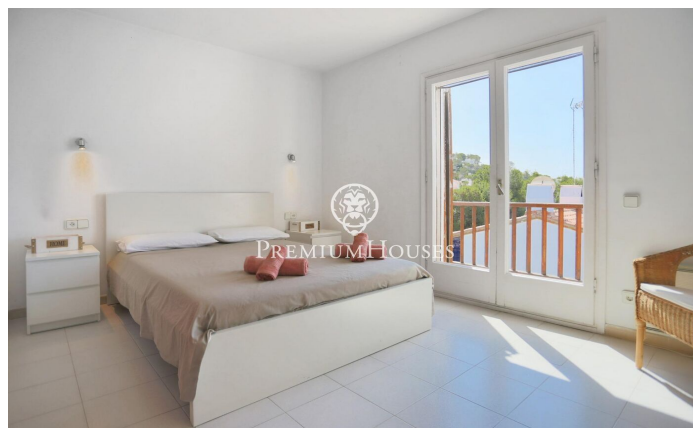
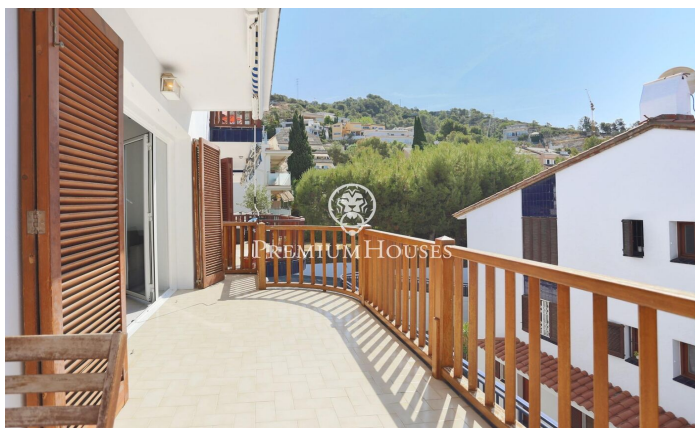
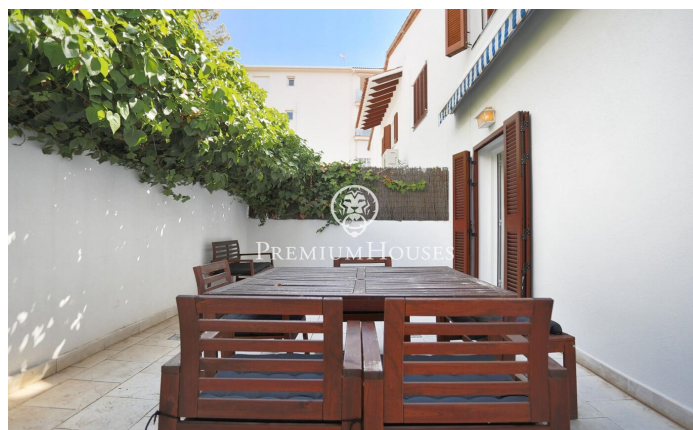




PREMIUMHOUSES

Excellence in Real Estate

Avda. Camí dels Capellans, 81
Local 3 Sitges
Tel: +34 93 809 72 40



Contact us for more information or to arrange a viewing

Tel: +34 93 809 72 40

sitges@premiumhouses.com

www.premiumhouses.es