



Detached House with Garden and Pool

Ref: PHS101080



Levantina / Sitges

In the Levantina neighborhood of Sitges, we have this detached house with a pool and a large garden. Thanks to its south-facing orientation, it enjoys natural light throughout the day. The property has a garage with capacity for four cars. The house is divided into two floors. Upon entering the home, we find a spacious living-dining room with direct access to the garden and pool. Next to it is the open-plan kitchen, a laundry room, and a bathroom. Next to this, we find three double bedrooms and an office. On the first floor, we find a second living room with access to a terrace. Adjacent to it, we find a very large en-suite bedroom with a living room and access to a terrace. Finally, there are two double bedrooms and a full bathroom serving both. All bedrooms have built-in wardrobes. The Levantina neighborhood of Sitges is very well connected to the C-32 motorway to the airport and Barcelona. It also enjoys great tranquility year-round.

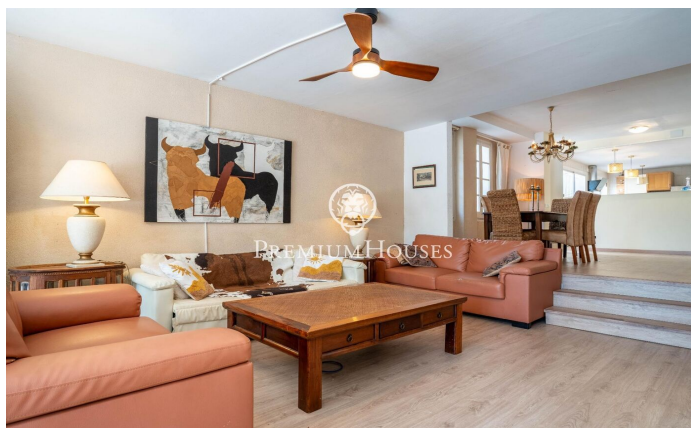
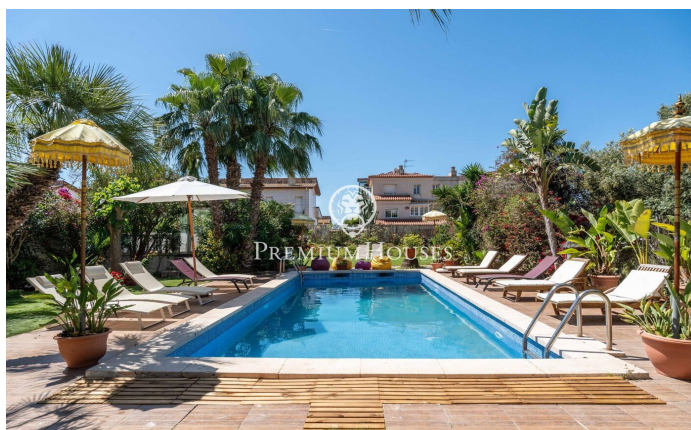
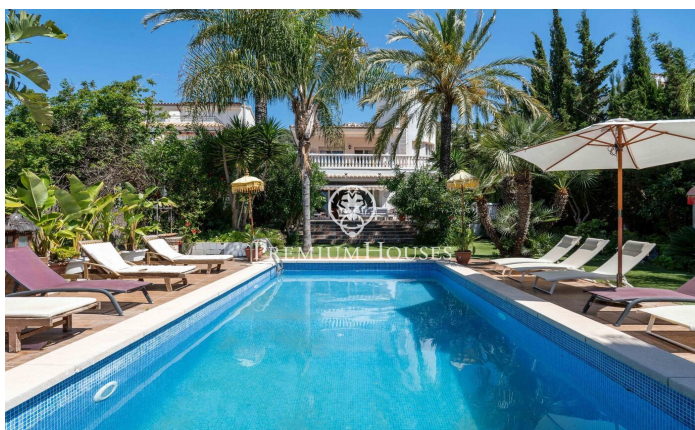
€2,800,000

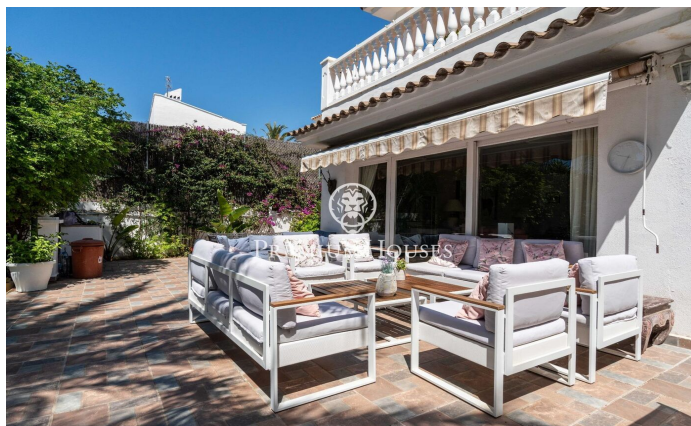
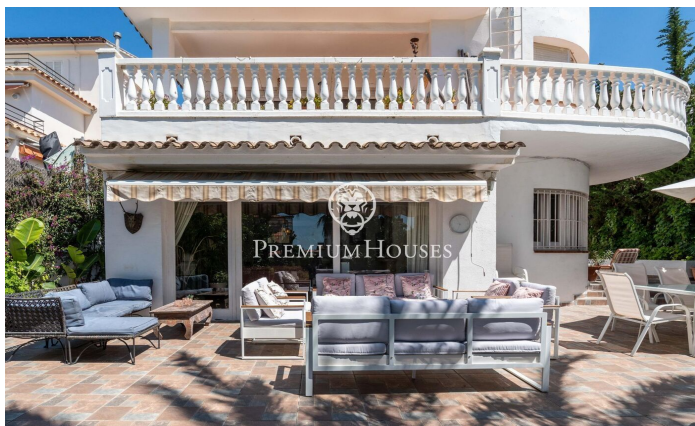
436 m²
6 Bedrooms
3 Bathrooms
969 m² plot
A/C
Heating
Backyard
Phone
Fireplace
Parking
Terrace
Built in closets



PREMIUMHOUSES
Excellence in Real Estate

Avda. Camí dels Capellans, 75
Local 4 Sitges
Tel: +34 93 809 72 40







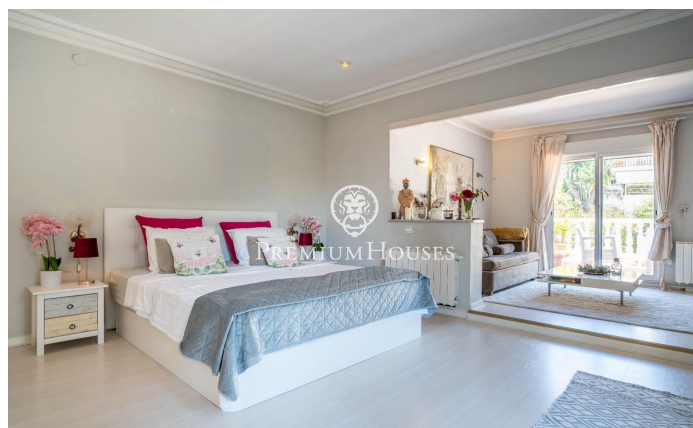
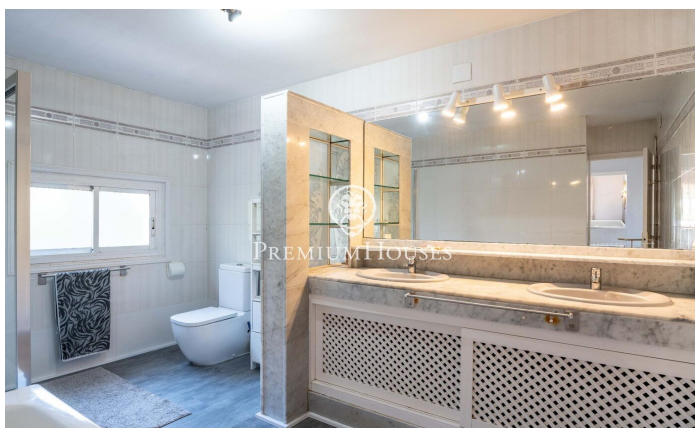
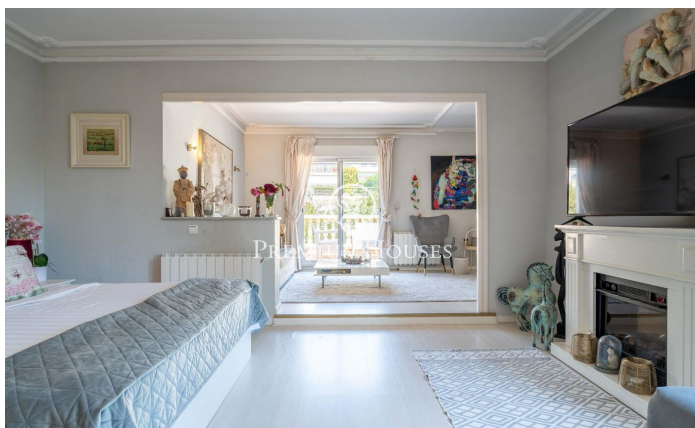
PREMIUMHOUSES

Excellence in Real Estate

Avda. Camí dels Capellans, 75

Local 4 Sitges

Tel: +34 93 809 72 40



Contact us for more information or to arrange a viewing

Tel: +34 93 809 72 40

sitges@premiumhouses.com

www.premiumhouses.es