



Apartment with Clear Views in Levantina

Ref: PHS101032

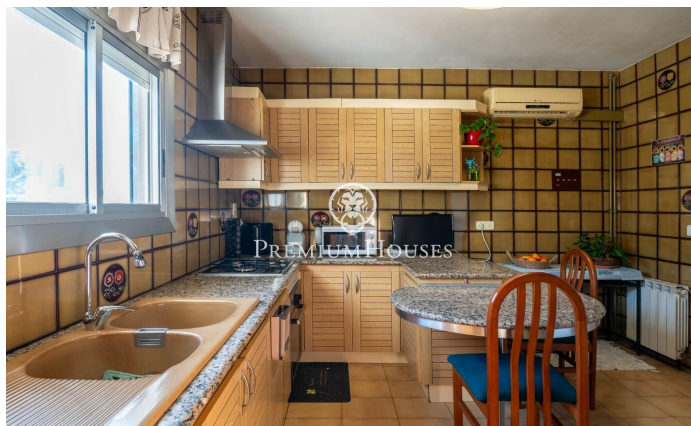
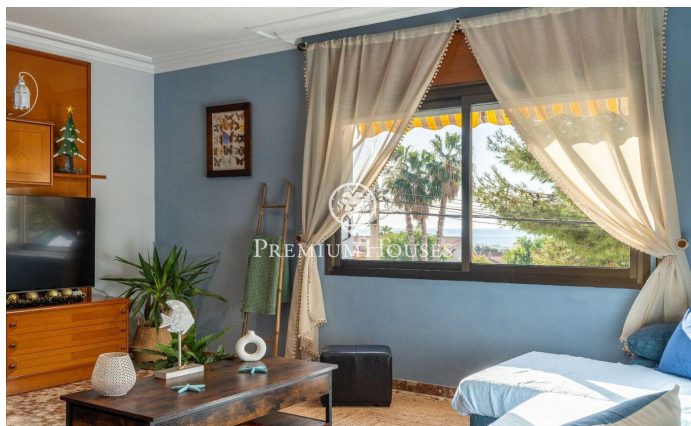
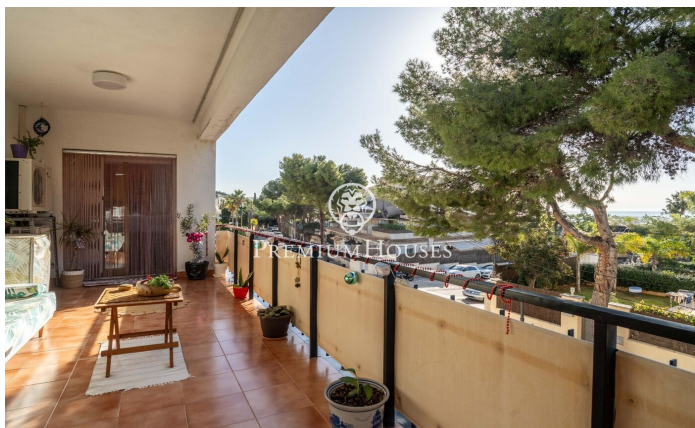


Levantina / Sitges

In the Levantina neighborhood of Sitges we have this apartment with unobstructed views. The house has a terrace facing south. The day area is made up of a living-dining room and a separate kitchen with laundry room. From the living room we access a terrace with unobstructed views. The night area is made up of three double bedrooms with built-in wardrobes and two full bathrooms. The property includes an independent 55 square meter apartment with a garden on the ground floor. The Levantina neighborhood of Sitges has a very good connection with the C-32 to go to the airport and Barcelona. Additionally, it has great tranquility throughout the year.

€449,000

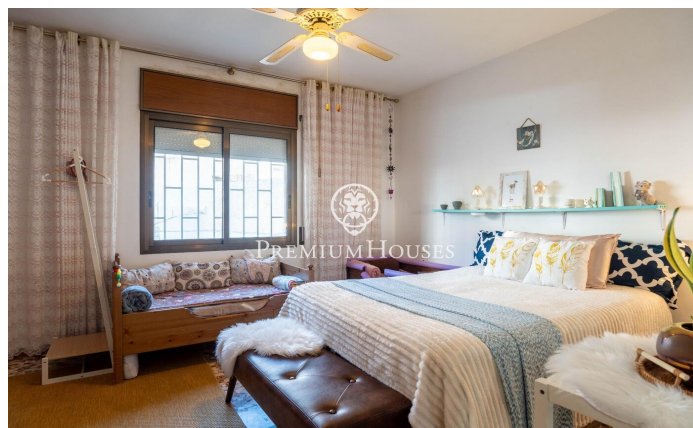
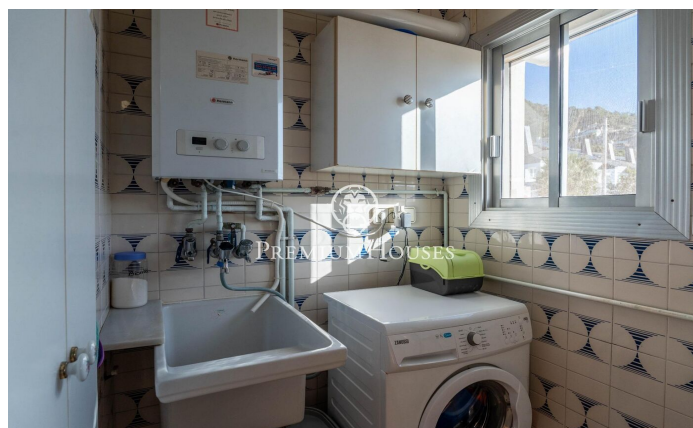
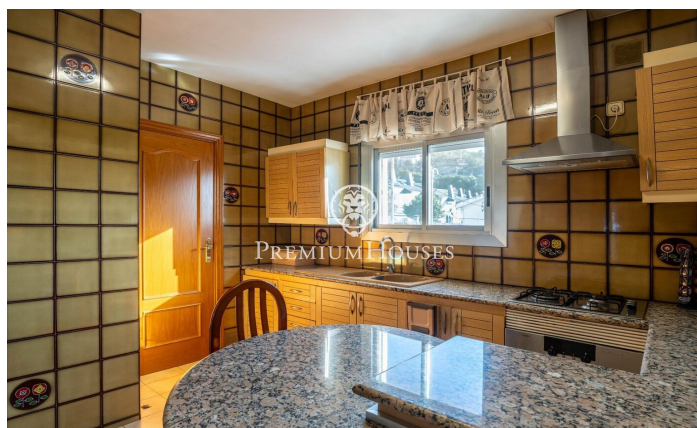
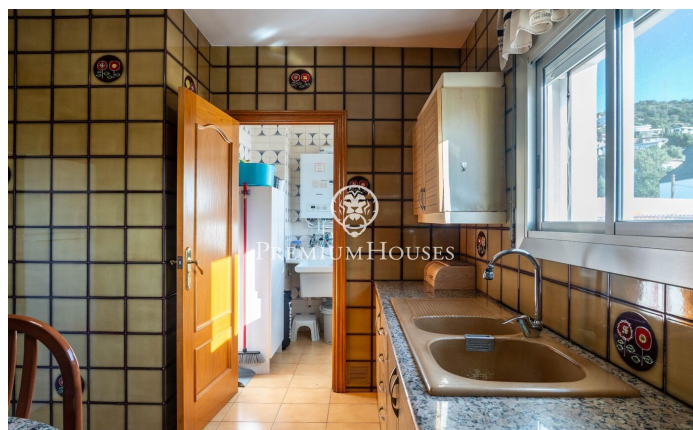
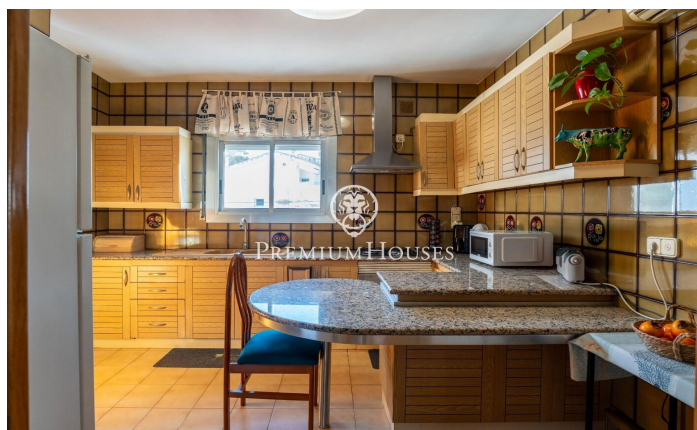
121 m²
3 Bedrooms
2 Bathrooms
A/C
Heating
Terrace
Built in closets





PREMIUMHOUSES
Excellence in Real Estate

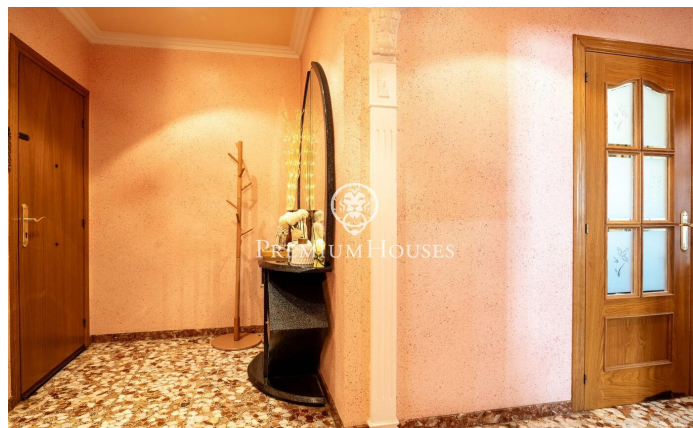
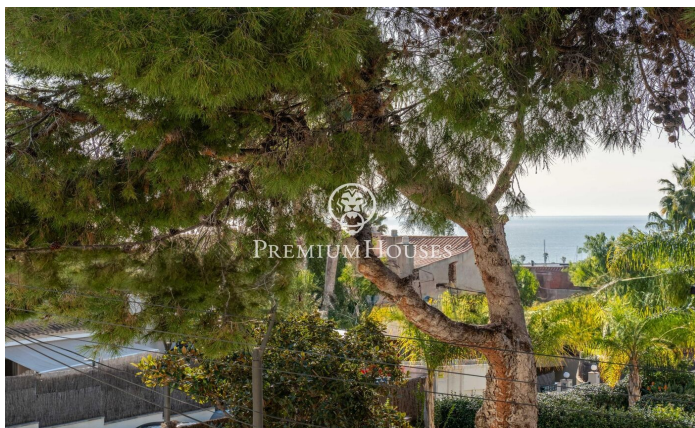
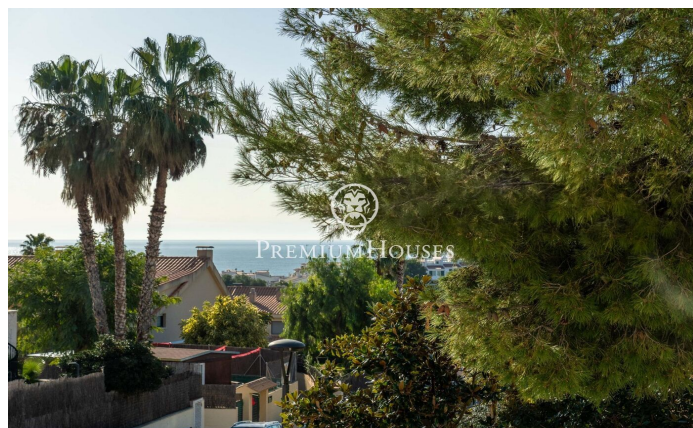
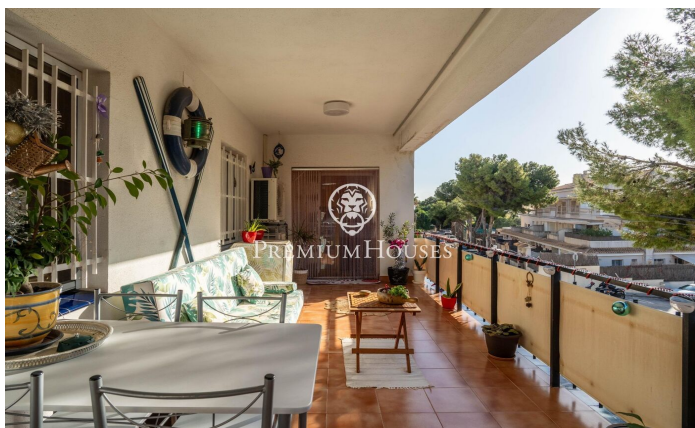
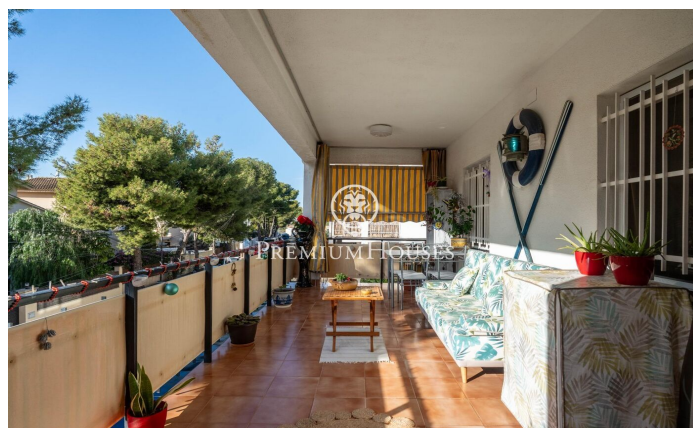
Avda. Camí dels Capellans, 81
Local 3 Sitges
Tel: +34 93 809 72 40





PREMIUMHOUSES
Excellence in Real Estate

Avda. Camí dels Capellans, 81
Local 3 Sitges
Tel: +34 93 809 72 40



Contact us for more information or to arrange a viewing

Tel: +34 93 809 72 40

sitges@premiumhouses.com

www.premiumhouses.es