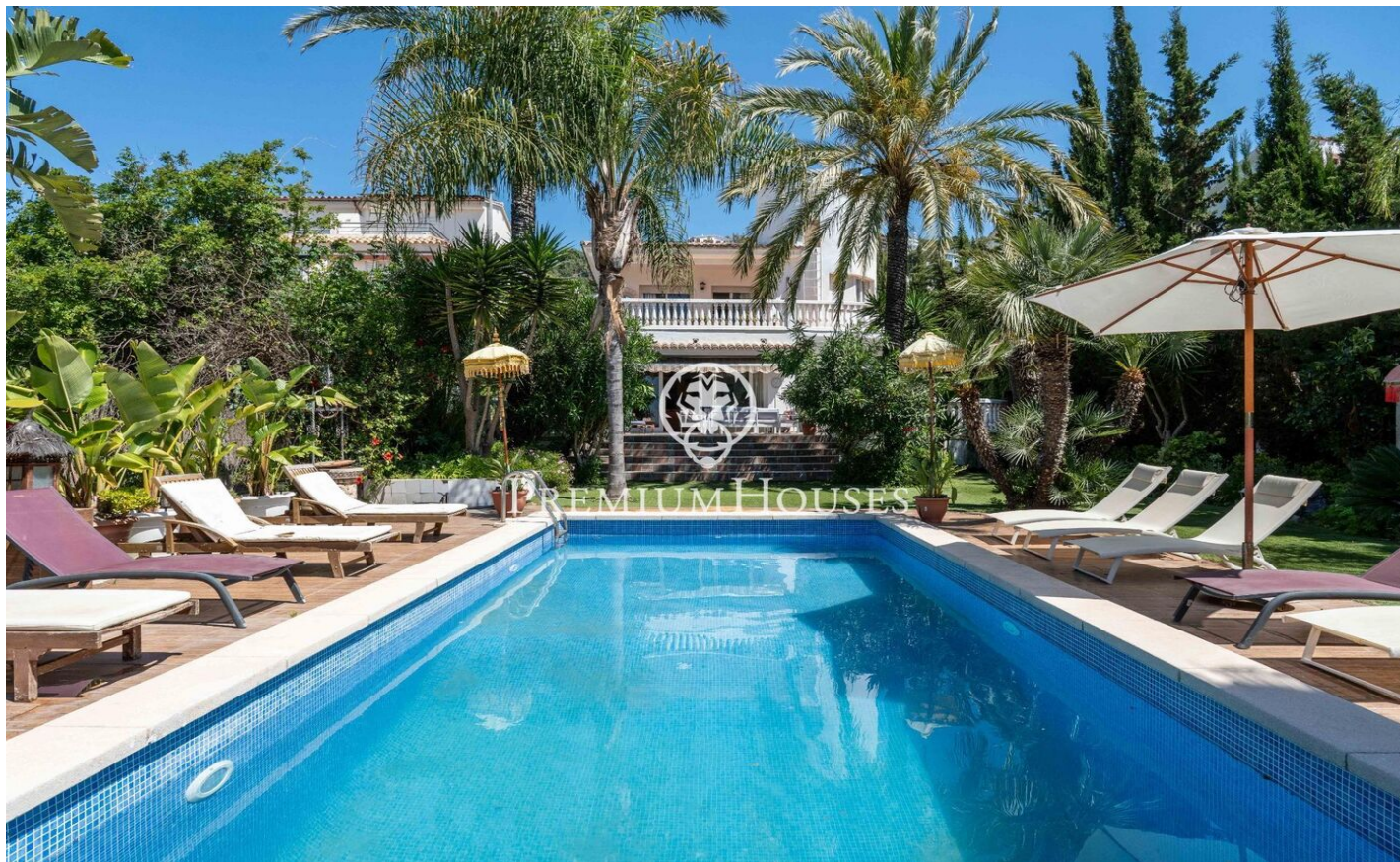




## Detached House with Garden and Pool

Ref: PHS101080



### Levantina-Montgavina-Quintmar / Sitges

In the Levantina neighborhood of Sitges, we have this detached house with a pool and a large garden. Thanks to its south-facing orientation, it enjoys natural light throughout the day. The property has a garage with capacity for four cars. The house is divided into two floors. Upon entering the home, we find a spacious living-dining room with direct access to the garden and pool. Next to it is the open-plan kitchen, a laundry room, and a bathroom. Next to this, we find three double bedrooms and an office. On the first floor, we find a second living room with access to a terrace. Adjacent to it, we find a very large en-suite bedroom with a living room and access to a terrace. Finally, there are two double bedrooms and a full bathroom serving both. All bedrooms have built-in wardrobes. The Levantina neighborhood of Sitges is very well connected to the C-32 motorway to the airport and Barcelona. It also enjoys great tranquility year-round.

**€2,800,000**

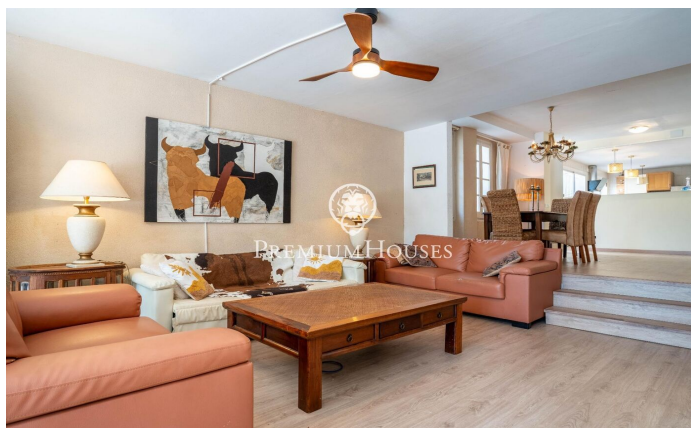
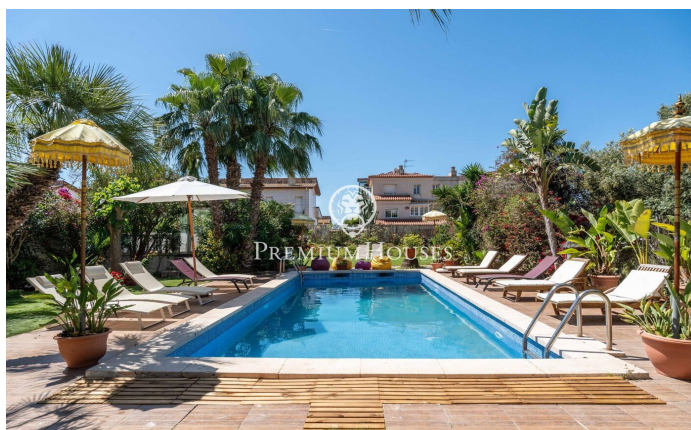
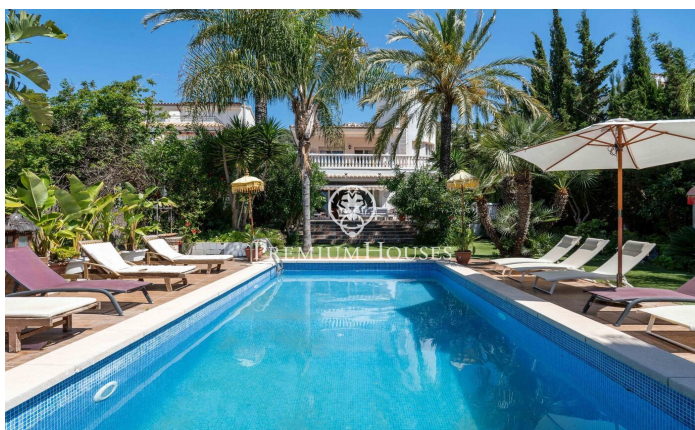
436 m<sup>2</sup>  
6 Bedrooms  
3 Bathrooms  
969 m<sup>2</sup> plot  
A/C  
Heating  
Backyard  
Phone  
Fireplace  
Parking  
Terrace  
Built in closets



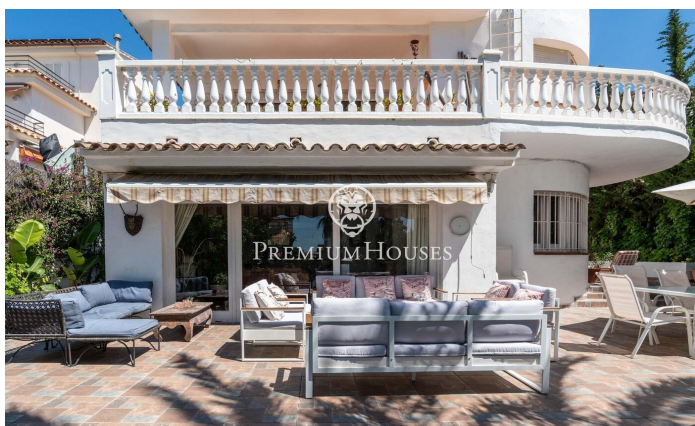


**PREMIUMHOUSES**  
Excellence in Real Estate

Avda. Camí dels Capellans, 81  
Local 3 Sitges  
Tel: +34 93 809 72 40





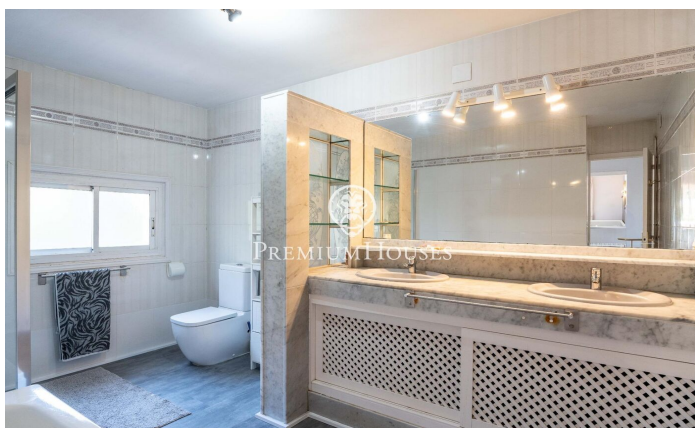
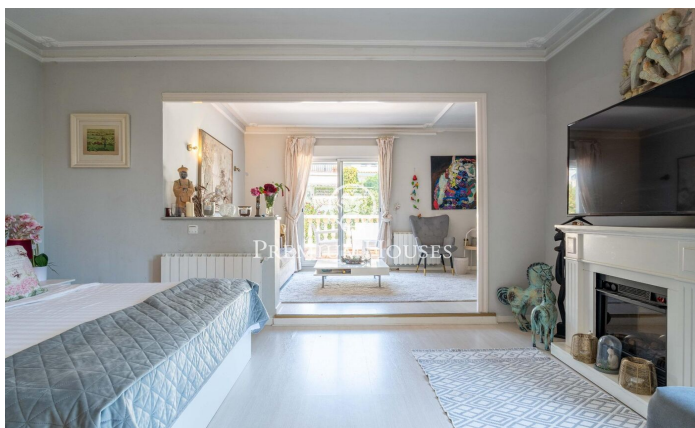






**PREMIUMHOUSES**  
Excellence in Real Estate

Avda. Camí dels Capellans, 81  
Local 3 Sitges  
Tel: +34 93 809 72 40



Contact us for more information or to arrange a viewing

Tel: +34 93 809 72 40

[sitges@premiumhouses.com](mailto:sitges@premiumhouses.com)

[www.premiumhouses.es](http://www.premiumhouses.es)