

## Penthouse In La Plana

Ref: PHS101319

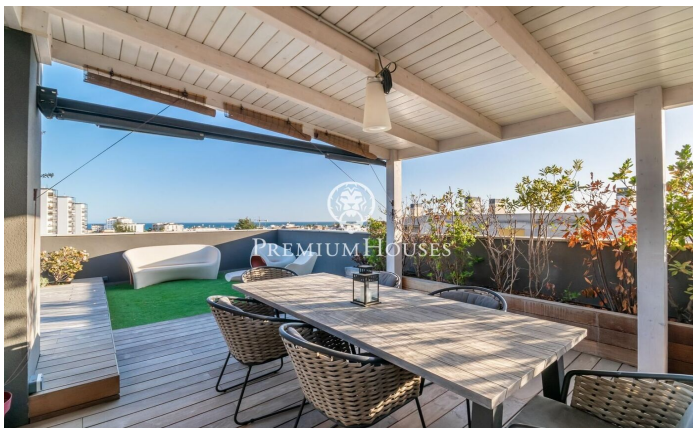
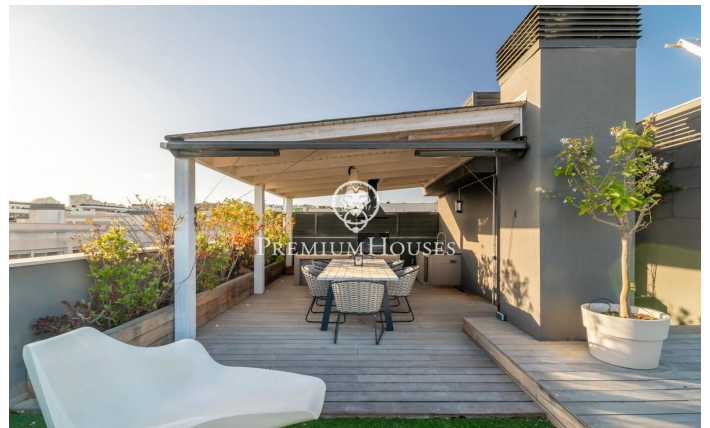
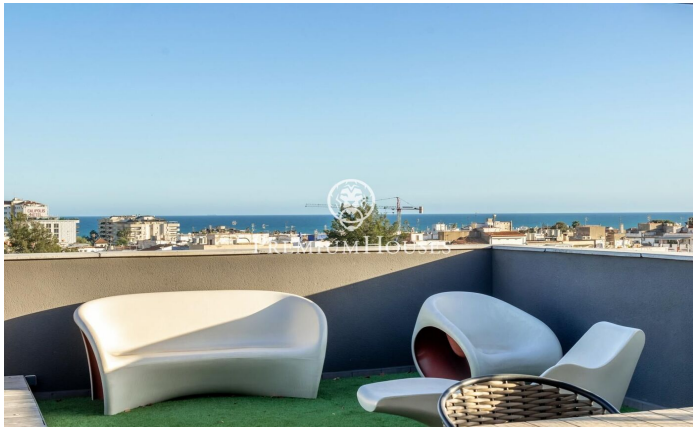


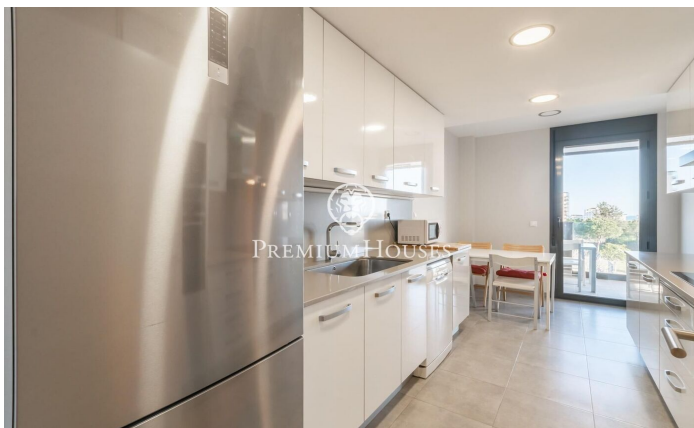
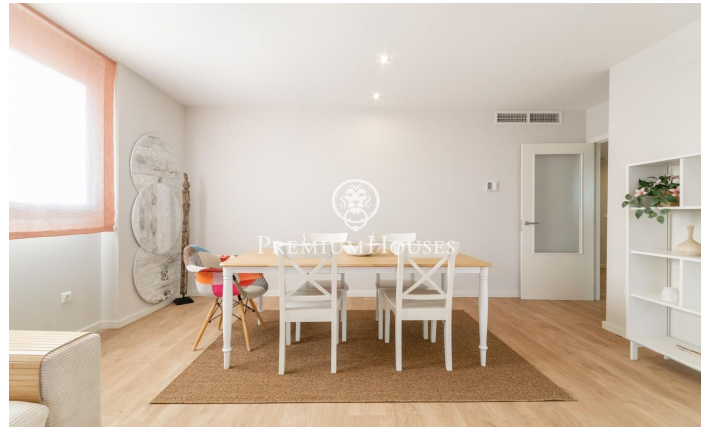
### La Plana / Sitges

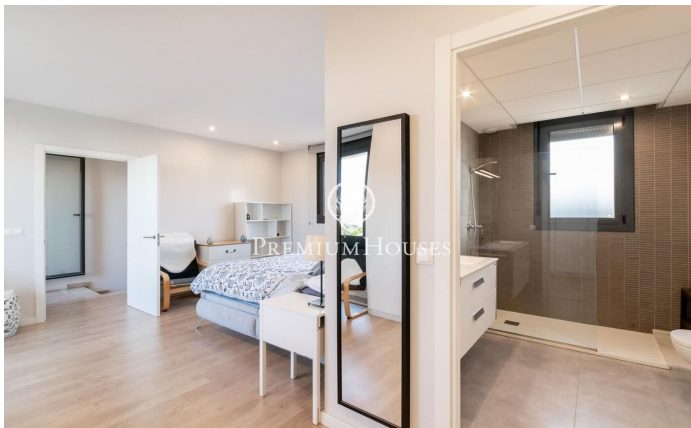
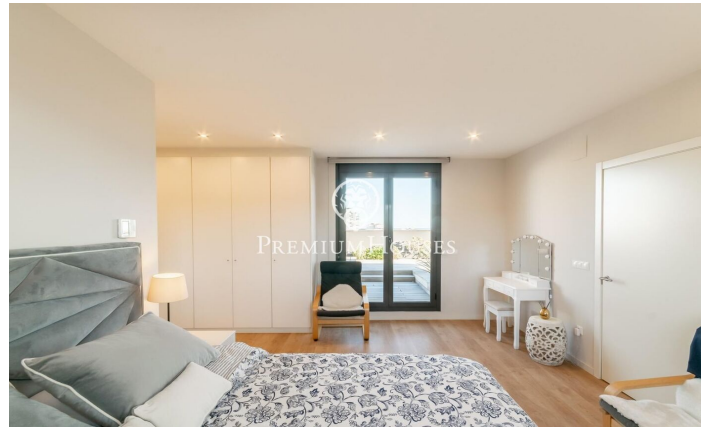
HOLIDAY RENTAL, minimum rental of ONE MONTH. - Rental price for June, July, and September: €8,000 per month - Rental price for August: €9,000 per month. In the La Plana neighborhood of Sitges we find this penthouse. The house has clear views and a solarium with an outdoor kitchen. The apartment is in good condition in a very recent building. This property is located in an urbanization with a community pool, elevator and parking. On the ground floor is the day area, which consists of a living-dining room and a fully equipped kitchen-dining room. Both rooms have access to the terrace. The night area is distributed in an en-suite room with a dressing room, 3 simple bedrooms with built-in wardrobes and a full bathroom that serves the entire floor. On the upper floor there is the solarium with an outdoor summer kitchen where you can enjoy spectacular views of the sea. The La Plana neighborhood of Sitges is a quiet residential area close to essential services. All this without giving up a location close to the center and the beach.

**€8,000**

170 m<sup>2</sup>  
4 Bedrooms  
2 Bathrooms  
Pool  
A/C  
Heating  
Sea views  
Lift  
Furnished  
Parking  
Terrace  
Built in closets







Contact us for more information or to arrange a viewing

Tel: +34 93 809 72 40

[sitges@premiumhouses.com](mailto:sitges@premiumhouses.com)

[www.premiumhouses.es](http://www.premiumhouses.es)