



## Modern House in La Plana

Ref: PHS101088



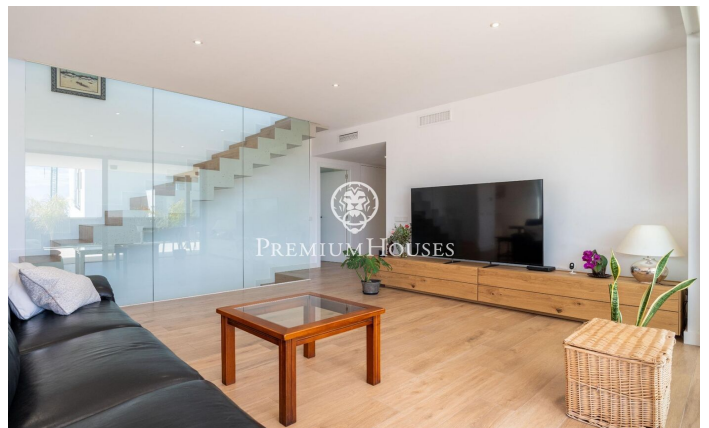
### La Plana / Sitges

In the La Plana neighborhood of Sitges, we have this recently built detached house facing south. The house has its own pool, a summer kitchen with a barbecue, and a garage with capacity for two cars. The house is divided into three floors. On the ground floor, there is a living-dining room with a kitchen island. Both rooms have access to the garden with a pool and also to the summer kitchen with a barbecue. On the same floor, there is a single bedroom and the master bedroom suite with a dressing room. A guest bathroom serves this floor. On the first floor, we find the sleeping area with a suite, two double bedrooms, and a full bathroom serving the other two bedrooms. All bedrooms have built-in wardrobes and access to a large south-facing terrace. In the basement, there is a multipurpose room, a bathroom, and a garage with capacity for two cars. The La Plana neighborhood of Sitges is a quiet residential area close to essential services. All this while being within walking distance of the city center.

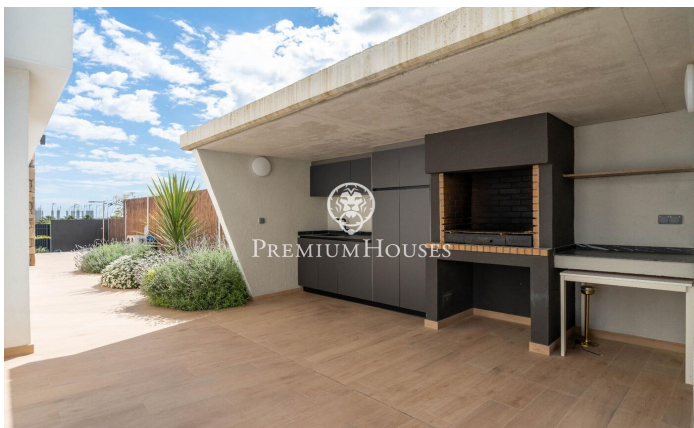
**€10,000**

294 m<sup>2</sup>  
5 Bedrooms  
4 Bathrooms  
604 m<sup>2</sup> plot  
A/C  
Heating  
Storage  
Furnished  
Phone  
Parking  
Built in closets

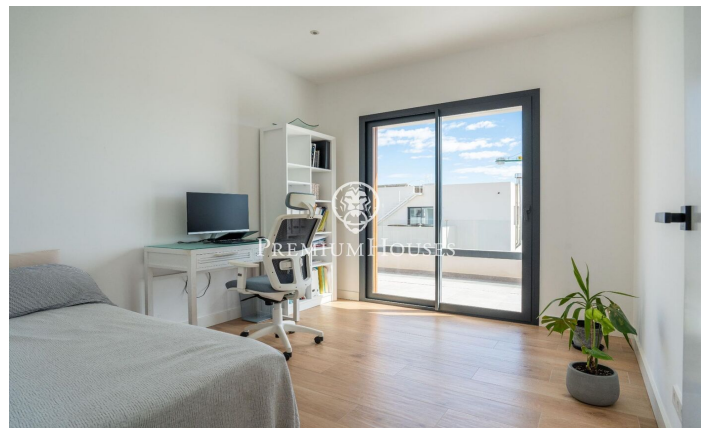












Contact us for more information or to arrange a viewing

Tel: +34 93 809 72 40

[sitges@premiumhouses.com](mailto:sitges@premiumhouses.com)

[www.premiumhouses.es](http://www.premiumhouses.es)