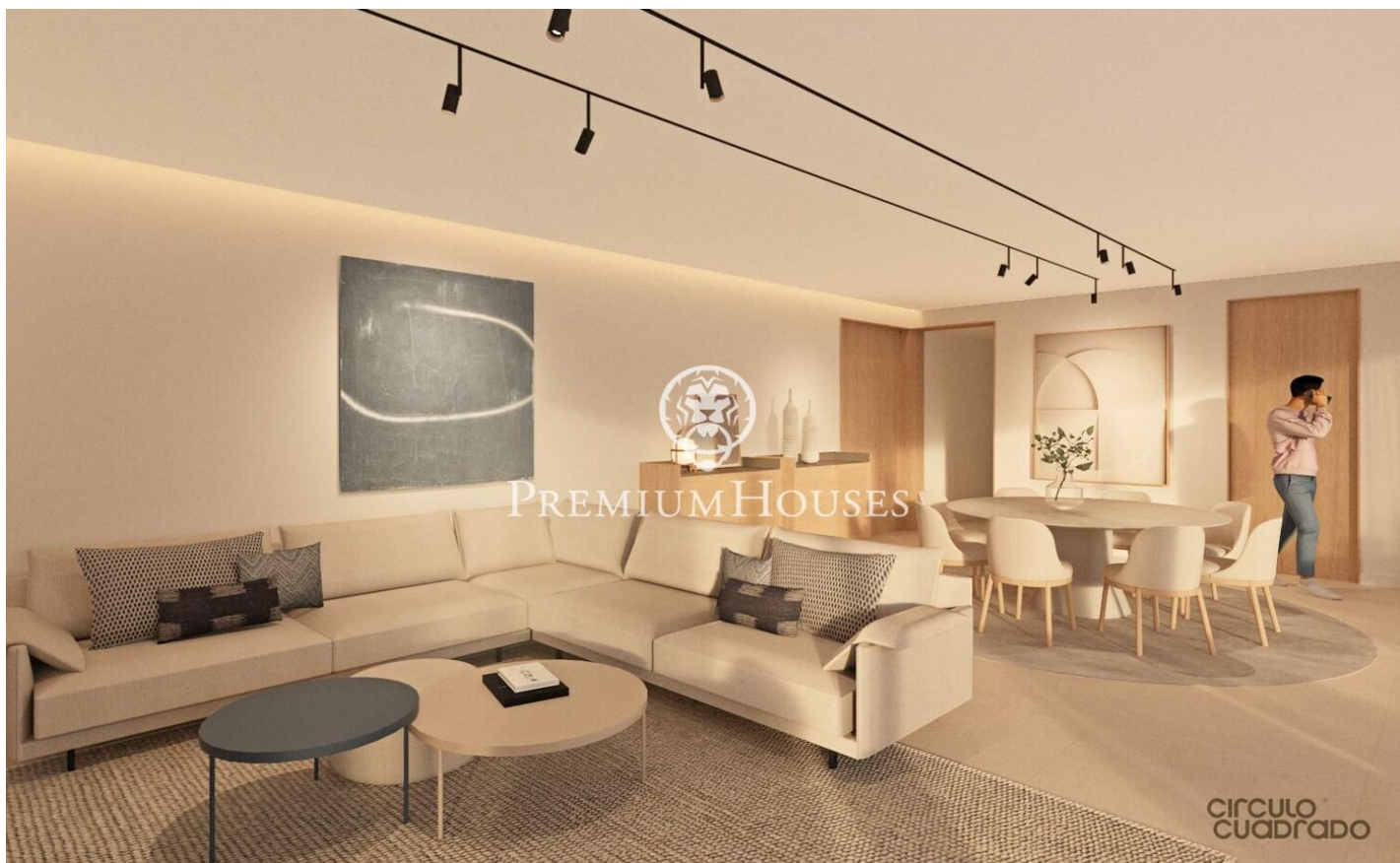


Modern House in La Plana

Ref: PHS100761

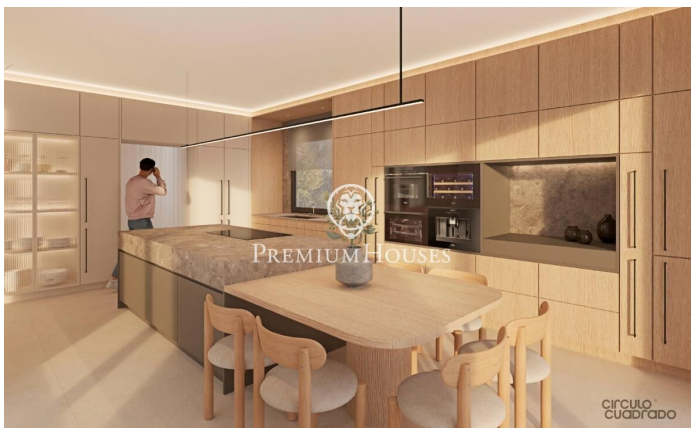
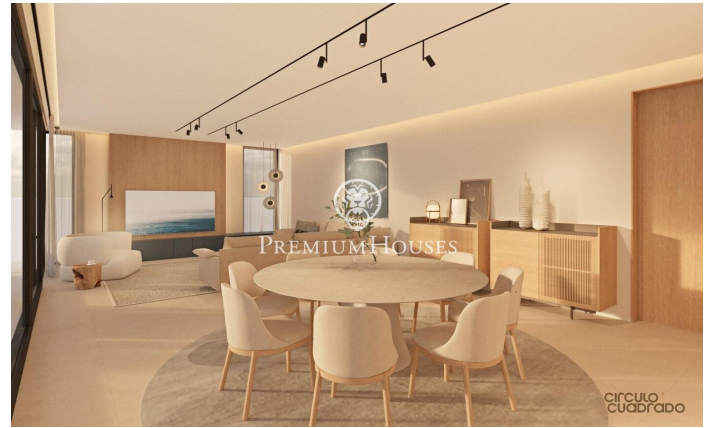


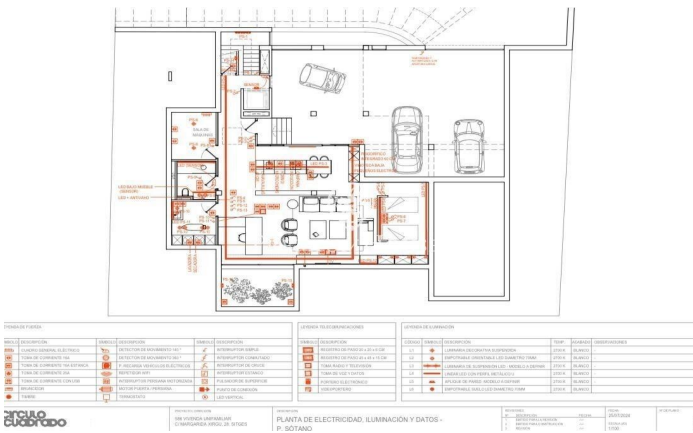
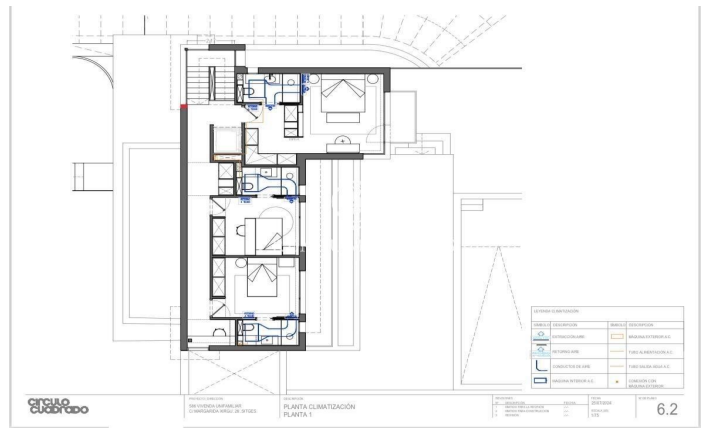
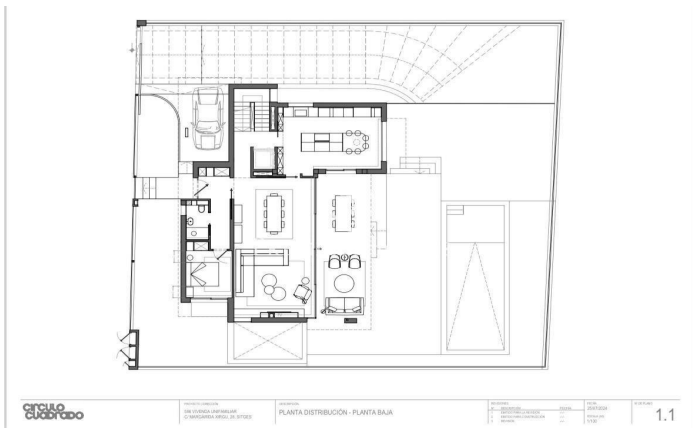
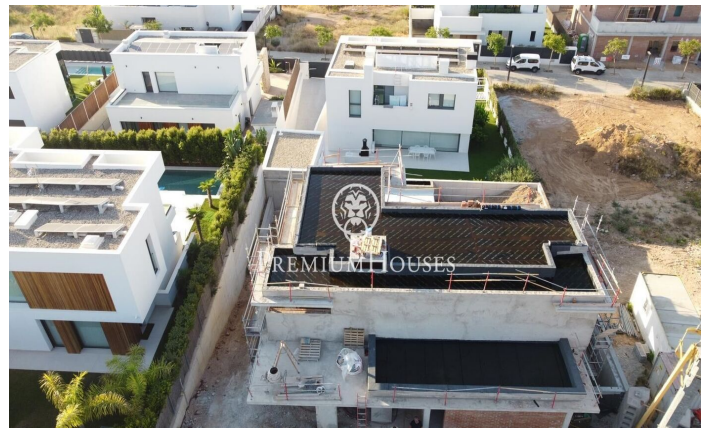
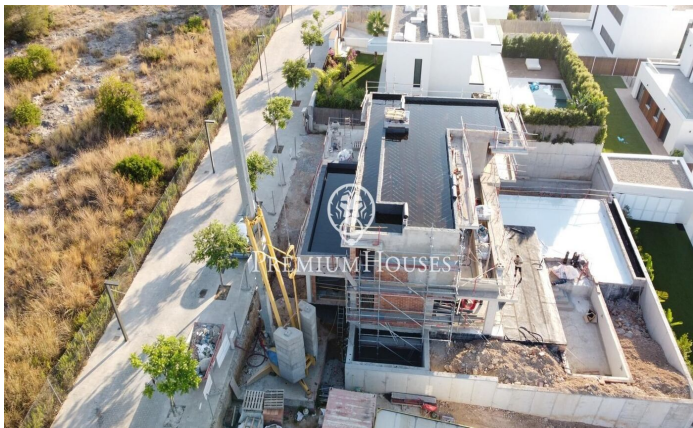
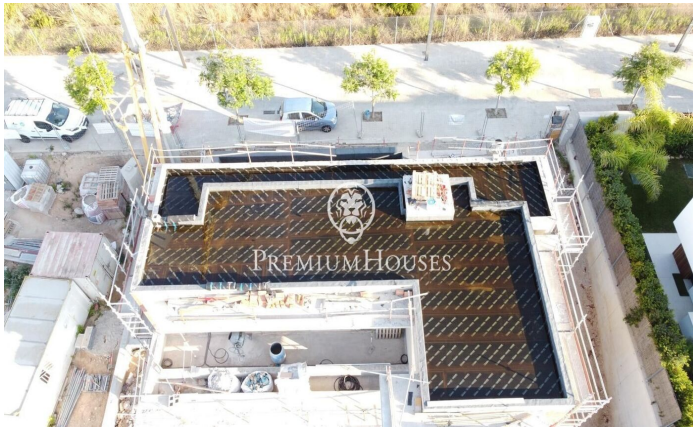
La Plana / Sitges

In the La Plana neighborhood of Sitges we find this modern house. The property faces south. The house has a garage with capacity for three cars. The property is distributed over three floors. On the ground floor we have the day area. It consists of a living-dining room and a kitchen with an island. From the living room we access the garden with swimming pool. The floor is completed by a double bedroom and a full bathroom. On the first floor is the night area made up of three double bedrooms, all en suite and with access to a terrace. All bedrooms have built-in wardrobes. In the basement there is a garage with capacity for three cars, a laundry room, a multipurpose room, a bathroom and a storage room. An elevator connects all floors of the house. The La Plana neighborhood of Sitges is a quiet residential area close to essential services. All this without giving up being within walking distance of the center.

€8,000

480 m²
4 Bedrooms
6 Bathrooms
604 m² plot
A/C
Heating
Sea views
Backyard
Storage
Lift
Phone
Parking
Built in closets





Contact us for more information or to arrange a viewing

Tel: +34 93 809 72 40

sitges@premiumhouses.com

www.premiumhouses.es

