

## Penthouse with Unobstructed Views in La Plana

Ref: PHS101330

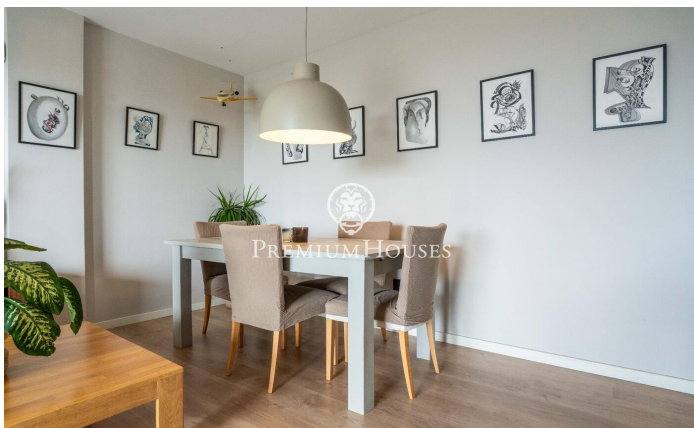
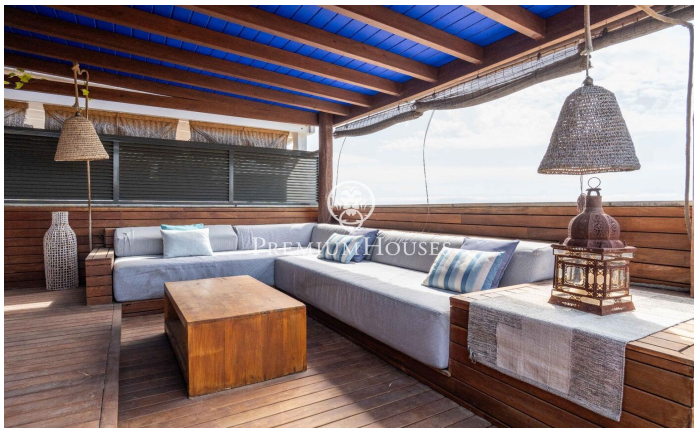
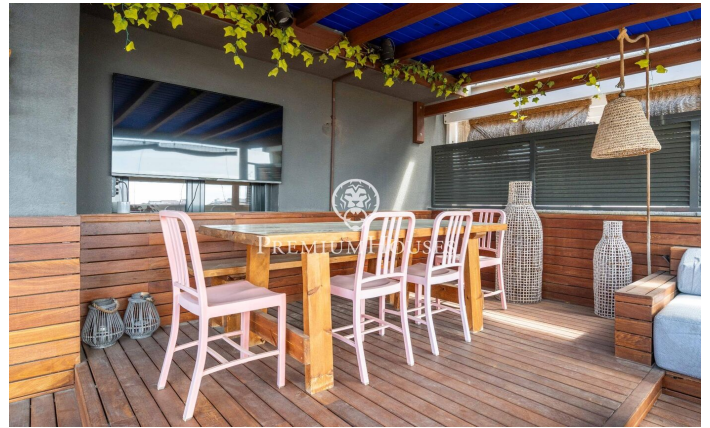


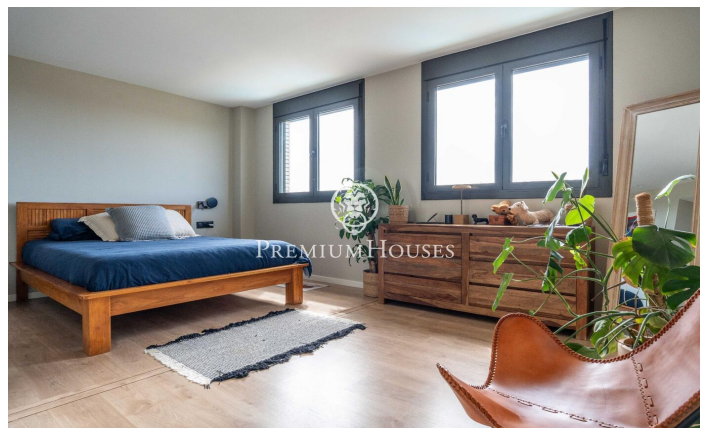
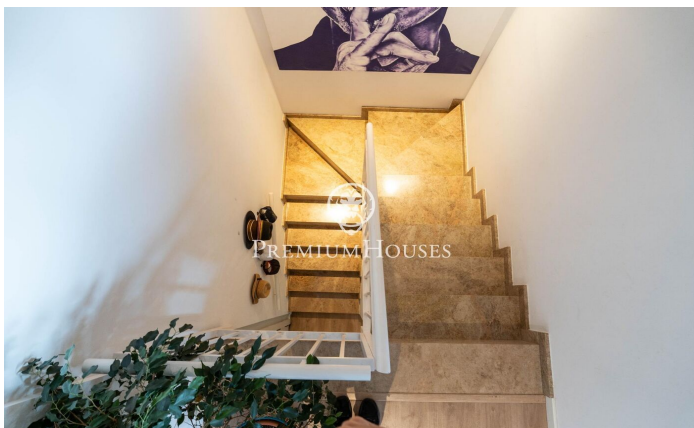
### La Plana / Sitges

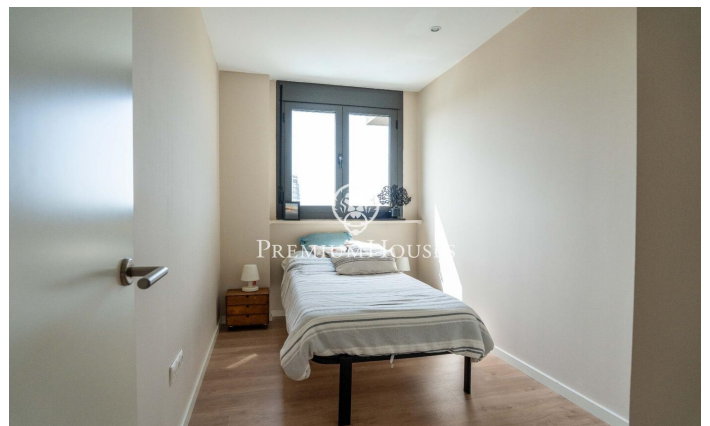
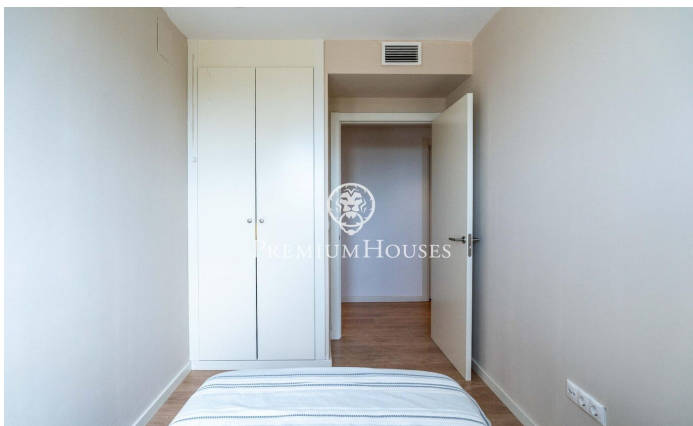
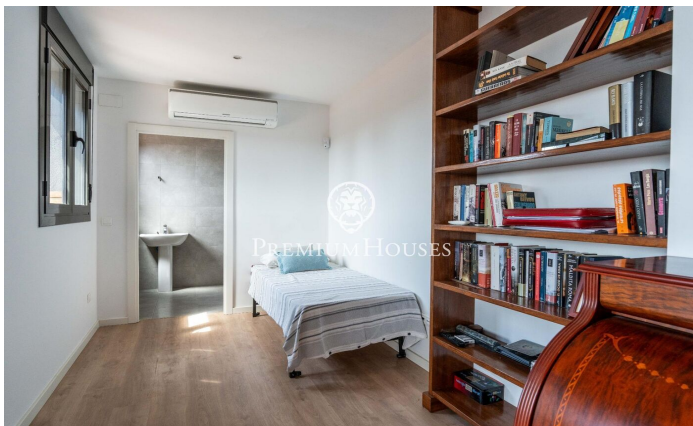
In the La Plana neighborhood of Sitges, we find this penthouse. The property is in good condition with unobstructed views. Thanks to its south-facing orientation, it enjoys abundant natural light throughout the day. The penthouse is located in a community with a communal swimming pool, elevator, and parking. The apartment is divided into two floors. On the ground floor, we have the living area, consisting of a living-dining room with a separate kitchen, both with access to a terrace offering unobstructed views of the sea and mountains. Also on the ground floor, we find the sleeping area, comprising a double bedroom with an en-suite bathroom and two single bedrooms. A full bathroom serves the other bedrooms. All bedrooms have built-in wardrobes, and a small laundry area completes this floor. On the first floor, we find a multipurpose space with access to a large terrace offering unobstructed views of the sea and mountains. A full bathroom serves this floor. The La Plana neighborhood of Sitges is a quiet residential area close to essential services. All this without sacrificing a location close to the center and the beach.

**€1,198,000**

157 m<sup>2</sup>  
4 Bedrooms  
3 Bathrooms  
Pool  
A/C  
Heating  
Sea views  
Storage  
Lift  
Parking  
Terrace  
Balcony  
Built in closets







Contact us for more information or to arrange a viewing

Tel: +34 93 809 72 40

[sitges@premiumhouses.com](mailto:sitges@premiumhouses.com)

[www.premiumhouses.es](http://www.premiumhouses.es)