

Detached house half built for sale in La Plana de Sitges

Ref: PHS100600



La plana / Sitges

Half built house in one of the best and most recent residential neighborhoods of Sitges. The structure is finished. The project has all the permits and the price includes all expenses incurred so far. The distribution of the project includes a large living room, kitchen, and bathroom on the first floor, with access to the garden and the possibility of building a swimming pool at this level of the living room and the porch. On the second floor is planned to build a bedroom suite with private bathroom, dressing room and large terrace and two other double bedrooms sharing a bathroom. In the basement there is another bathroom, laundry, machine room and a large multipurpose room with English patio. The garage can accommodate 4 cars. Being half built, it is possible to customize all the finishes and distribution. The structure is designed to be able to install an elevator. Do not miss the opportunity to have your own house in La Plana de Sitges, in 6 months!

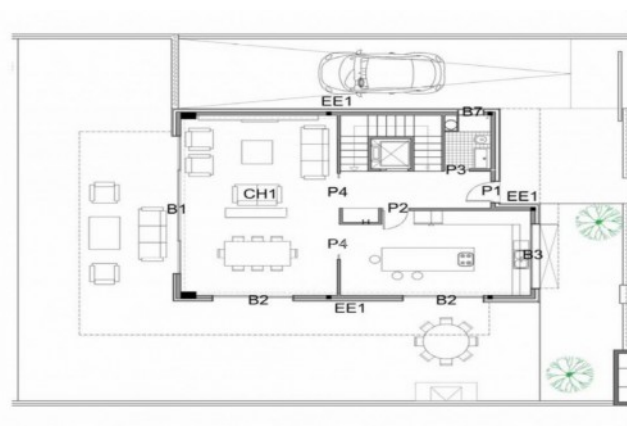
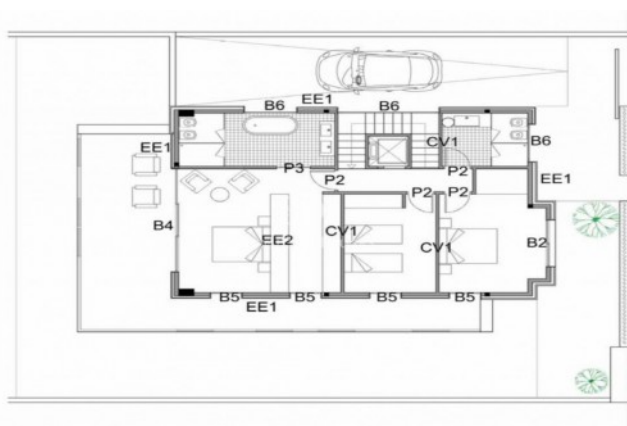
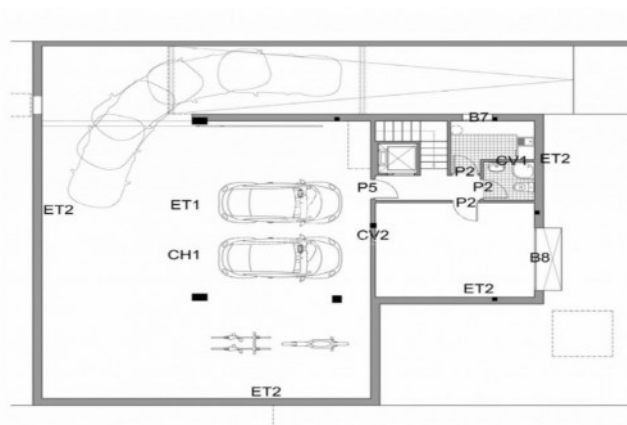
€950,000

393 m²
4 Bedrooms
4 Bathrooms
512 m² plot
Pool
Sea views
Terrace



PREMIUMHOUSES
Excellence in Real Estate

Avda. Camí dels Capellans, 81
Local 3 Sitges
Tel: +34 93 809 72 40



Contact us for more information or to arrange a viewing

Tel: +34 93 809 72 40

sitges@premiumhouses.com

www.premiumhouses.es