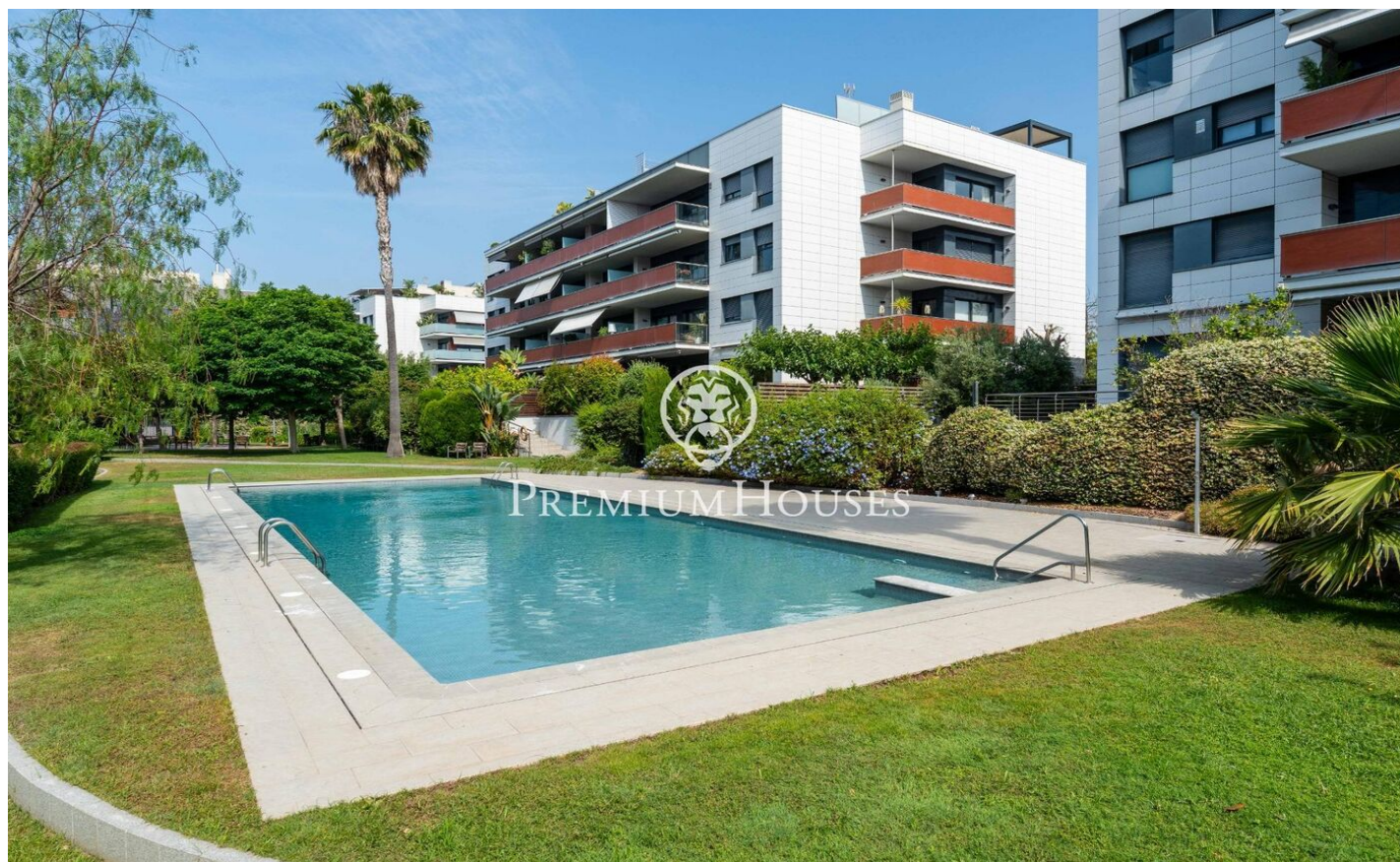


## Apartment with Terrace and Communal Pool in La Plana

Ref: PHS101132



### La Plana / Sitges

In the La Plana neighborhood, we find this apartment with unobstructed views of the community and a terrace. The home has parking, an elevator, and a storage room. The communal area of the property includes gardens and a swimming pool. The living area features a living-dining room with direct access to the terrace. From this space, we access the kitchen/diner. The sleeping area features an en-suite bedroom, a double bedroom, and a single bedroom. A full bathroom serves this floor. The home is located in a building with an elevator and a communal pool. The home also has parking and a storage room. The La Plana area is characterized by being a quiet neighborhood year-round. All this without sacrificing an excellent location with respect to the city center and services.

**€645,000**

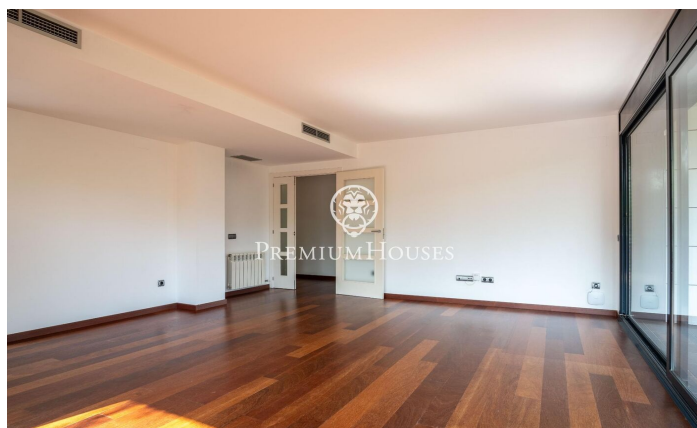
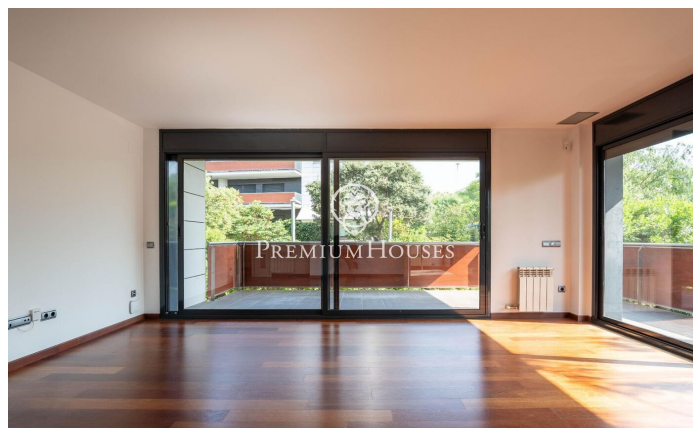
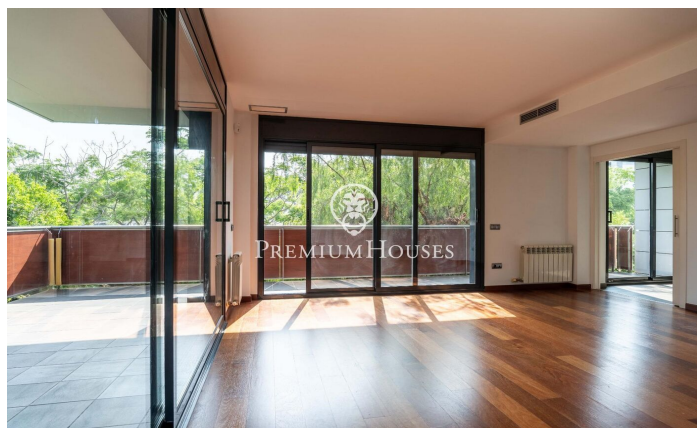
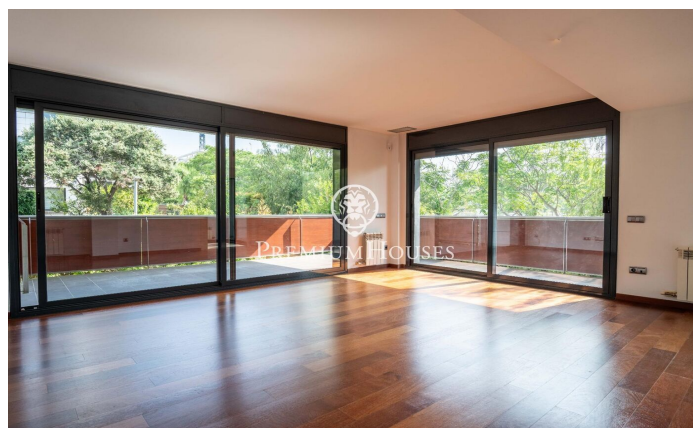
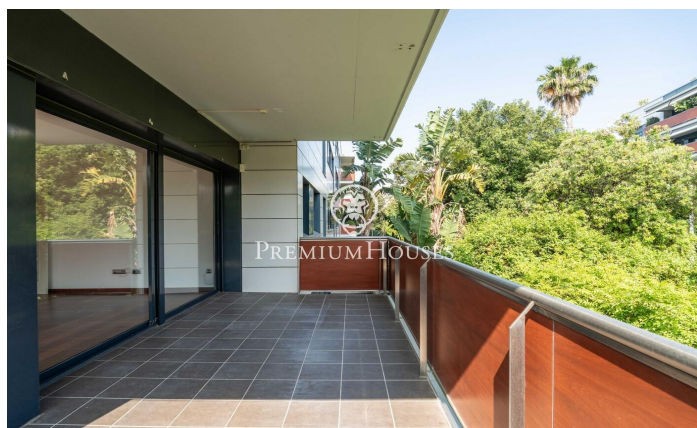
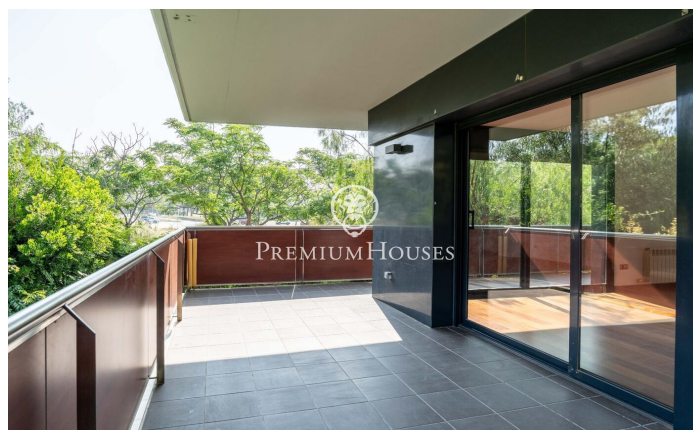
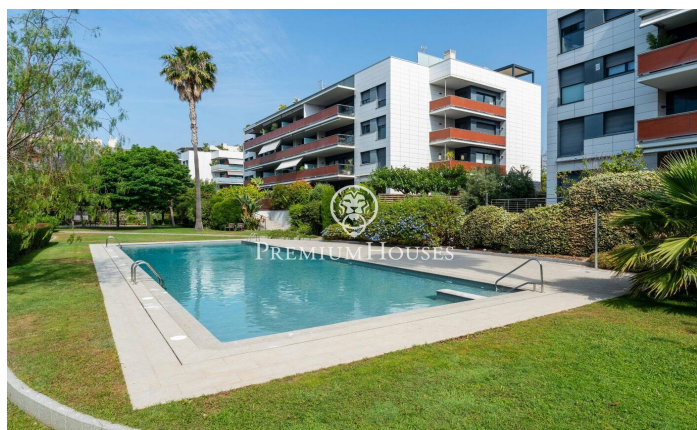
103 m<sup>2</sup>  
3 Bedrooms  
2 Bathrooms  
A/C  
Heating  
Storage  
Lift  
Phone  
Parking  
Terrace  
Built in closets



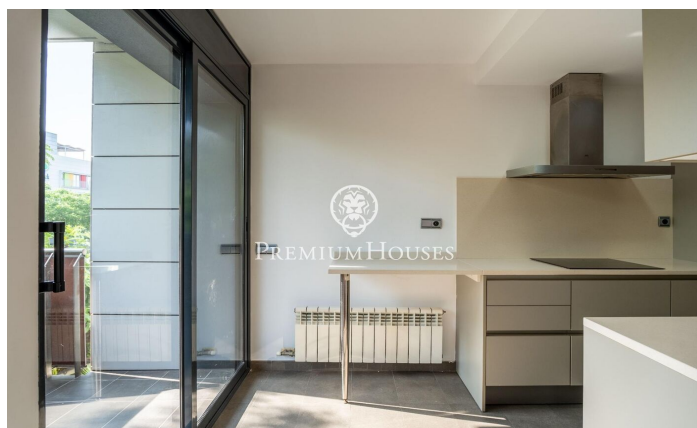
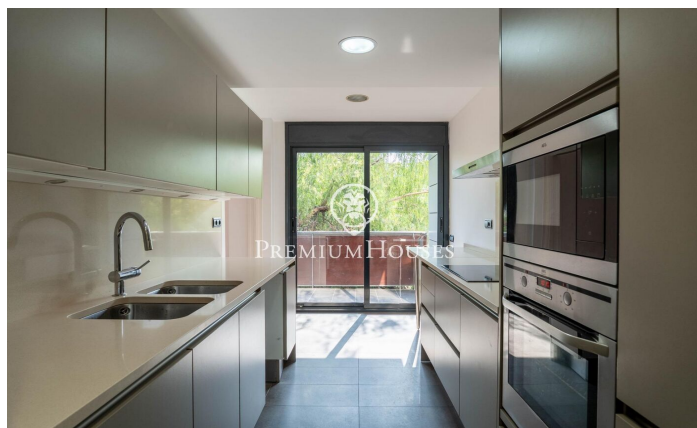
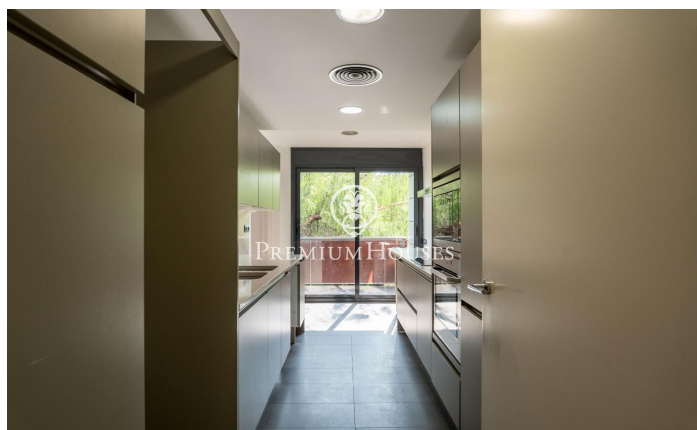


**PREMIUMHOUSES**  
Excellence in Real Estate

Avda. Camí dels Capellans, 75  
Local 4 Sitges  
Tel: +34 93 809 72 40





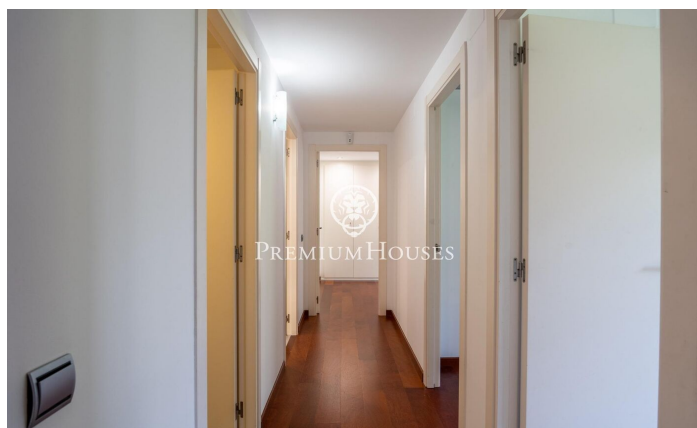






**PREMIUMHOUSES**  
Excellence in Real Estate

Avda. Camí dels Capellans, 75  
Local 4 Sitges  
Tel: +34 93 809 72 40



Contact us for more information or to arrange a viewing

Tel: +34 93 809 72 40

[sitges@premiumhouses.com](mailto:sitges@premiumhouses.com)

[www.premiumhouses.es](http://www.premiumhouses.es)