



Apartment with Clear Views and Large Terrace in La Plana

Ref: PHS100956

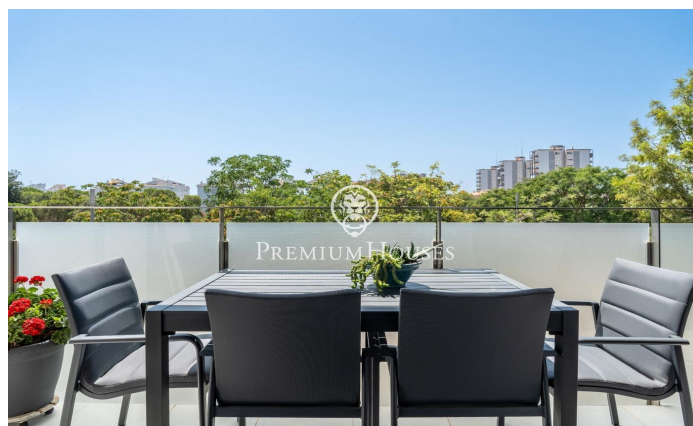
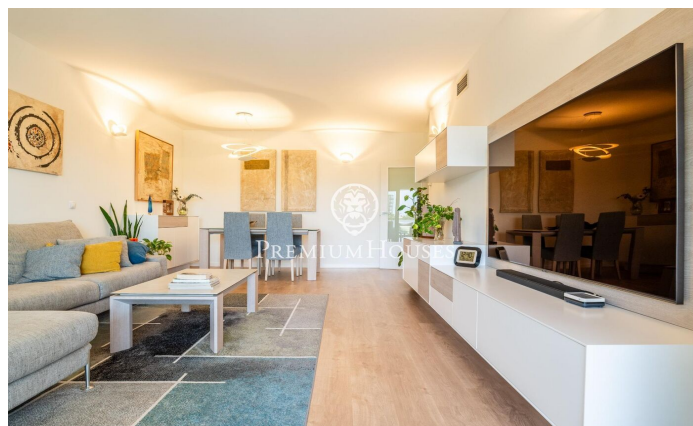


La Plana / Sitges

In the Plana neighborhood of Sitges we find this recently built apartment for sale. The house has clear views of the Can Robert park that can be enjoyed from the terrace. The community has a communal area with a garden and swimming pool. The day area consists of a living-dining room with access to a large terrace with space for a table for 6 people and views of the park. Next, we have a separate kitchen/dining room with access to the terrace. The night area is made up of an en-suite room, a double room and a single room. All of them have built-in wardrobes. A full bathroom serves the floor. The house also has a parking space. The La Plana neighborhood of Sitges is a quiet residential area close to essential services. All this without giving up being within walking distance of the center.

€745,000

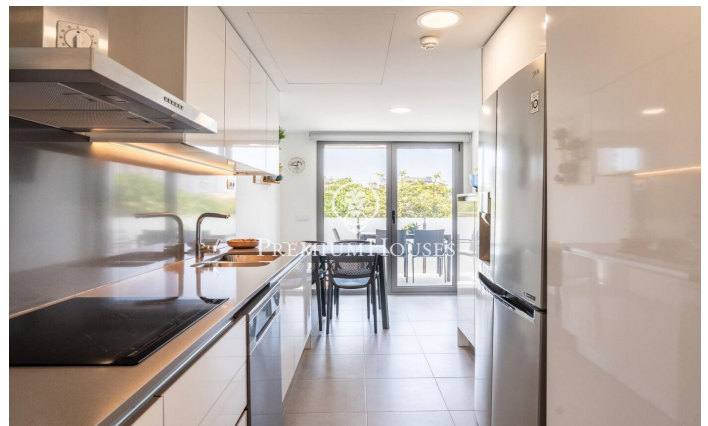
114 m²
3 Bedrooms
2 Bathrooms
Pool
A/C
Heating
Storage
Lift
Phone
Parking
Terrace
Balcony
Built in closets





PREMIUMHOUSES
Excellence in Real Estate

Avda. Camí dels Capellans, 81
Local 3 Sitges
Tel: +34 93 809 72 40





PREMIUMHOUSES

Excellence in Real Estate

Avda. Camí dels Capellans, 81
Local 3 Sitges
Tel: +34 93 809 72 40



Contact us for more information or to arrange a viewing

Tel: +34 93 809 72 40

sitges@premiumhouses.com

www.premiumhouses.es