

Apartment with sea view, elevator and parking

Ref: PHS100634



Els Molins/Hospital / Sitges

Long term rental, Immediate availability. Beautiful rental apartment with a large terrace with sea views, elevator and parking included. The house located on the 5th floor with unobstructed views, is distributed in 4 bedrooms, one double en suite with built-in wardrobe and access to a balcony, and three single rooms also with exterior access. Two full bathrooms with bathtub. Very comfortable independent kitchen with fridge, vitro and microwave, dining area and exit to the terrace. The living room is also very spacious, about 25m2 approx, with views of the terrace and the sea. Very bright! On the terrace there is enough space to place a table, chairs and a chill-out area. It has a large closet for the washing machine and storage. All the openings are made of double-glazed aluminium, stoneware floors, interior woodwork, natural gas radiator heating, ducted air conditioning, security door, built-in wardrobe in the double room and awning on the terrace. It's located in the Los Molinos area, a few meters from the center of Sitges, surrounded by supermarkets, a pharmacy, schools, playgrounds, a medical center and 500 meters from the beach. Excellent access to the motorway towards Barcelona and an 8-minute walk from the Sitges train station. Ideal for families!

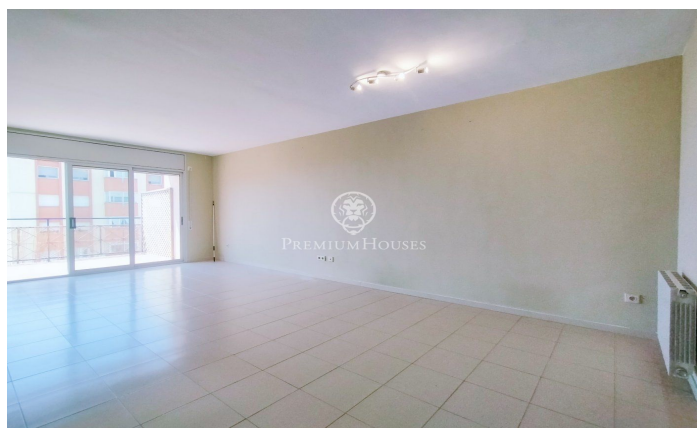
€1,900

103 m²
4 Bedrooms
2 Bathrooms
A/C
Heating
Sea views
Lift
Terrace
Balcony
Built in closets



PREMIUMHOUSES
Excellence in Real Estate

Avda. Camí dels Capellans, 75
Local 4 Sitges
Tel: +34 93 809 72 40





PREMIUMHOUSES
Excellence in Real Estate

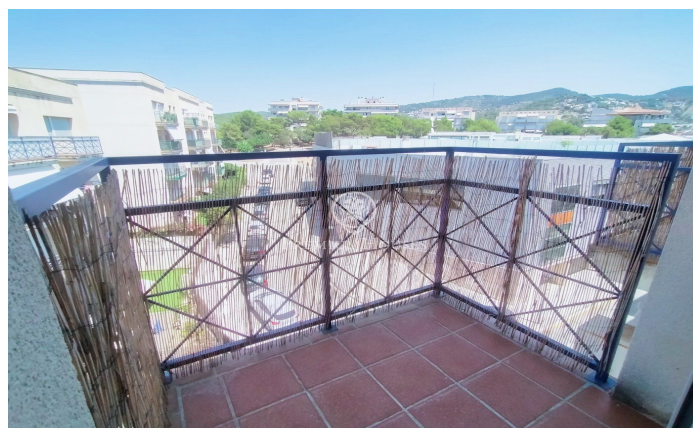
Avda. Camí dels Capellans, 75
Local 4 Sitges
Tel: +34 93 809 72 40





PREMIUMHOUSES
Excellence in Real Estate

Avda. Camí dels Capellans, 75
Local 4 Sitges
Tel: +34 93 809 72 40



Contact us for more information or to arrange a viewing

Tel: +34 93 809 72 40

sitges@premiumhouses.com

www.premiumhouses.es