



## Ground Floor with Large Patio in Sitges

Ref: PHS101117



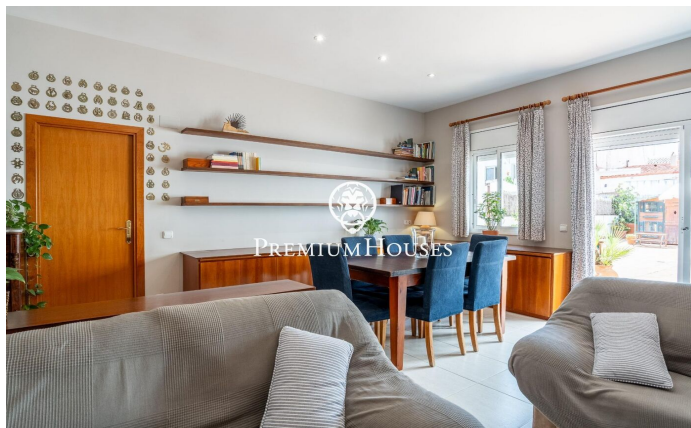
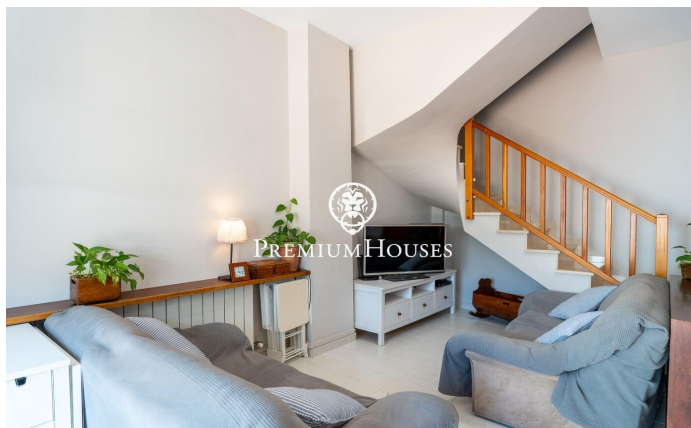
### Centre / Sitges

In the downtown neighborhood of Sitges, we have this ground floor apartment with a large terrace. The apartment is in a community with an elevator and parking for three cars. The ground floor is divided into two levels. On the ground floor is the living area, which includes a living-dining room and a separate kitchen. Both rooms open onto a large yard. A guest toilet completes the floor. On the first floor is the sleeping area, where we have three double bedrooms, one of which is en suite with access to a balcony and the others too. All bedrooms have built-in wardrobes. A full bathroom serves the other bedrooms. On the same floor, there is a gallery where the laundry room is located. The home is located in the downtown neighborhood of Sitges. This neighborhood is characterized by having all services and the beach just a stone's throw away. Sitges' downtown area is bustling year-round, allowing you to enjoy all the town's festivities.

**€800,000**

110 m<sup>2</sup>  
3 Bedrooms  
2 Bathrooms  
Heating  
Backyard  
Storage  
Lift  
Phone  
Parking  
Terrace  
Built in closets



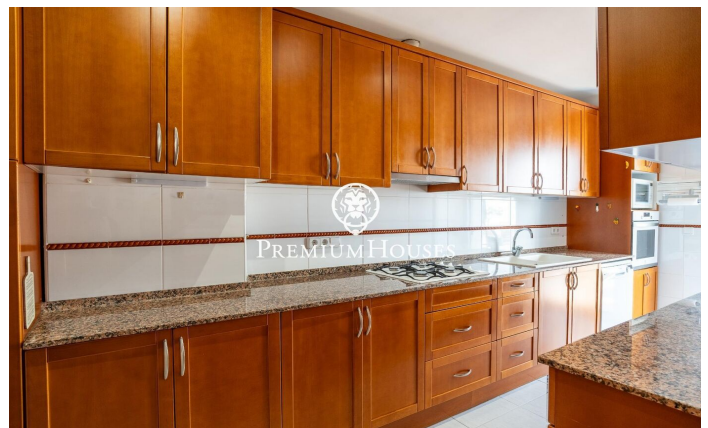
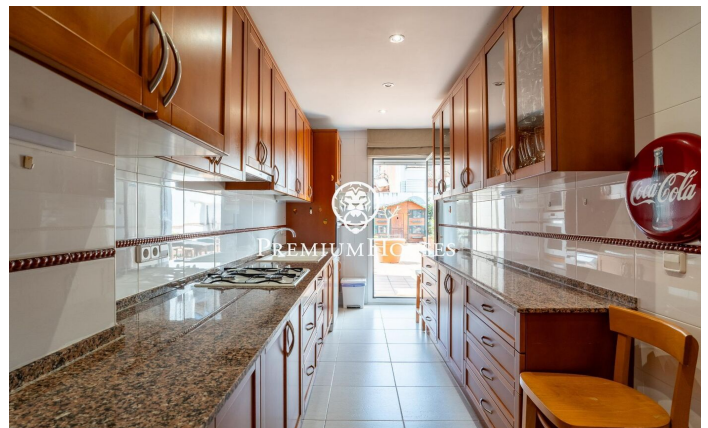
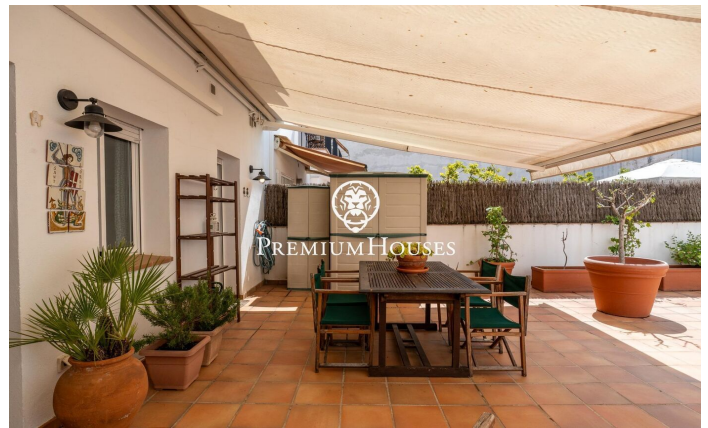
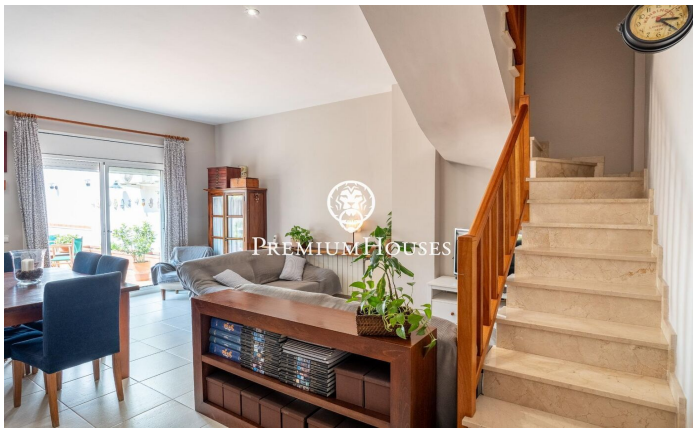






**PREMIUMHOUSES**  
Excellence in Real Estate

Avda. Camí dels Capellans, 75  
Local 4 Sitges  
Tel: +34 93 809 72 40







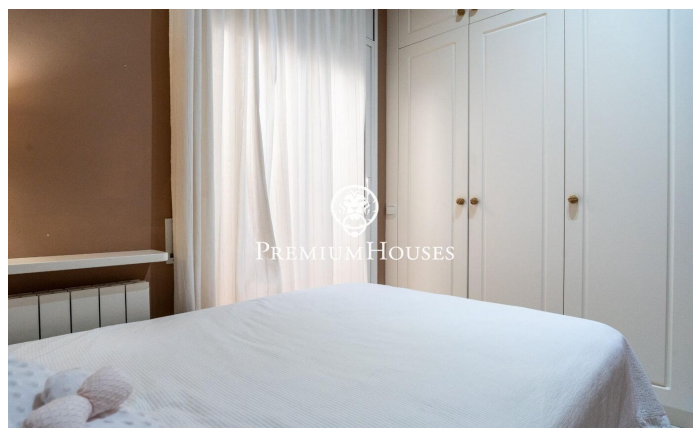
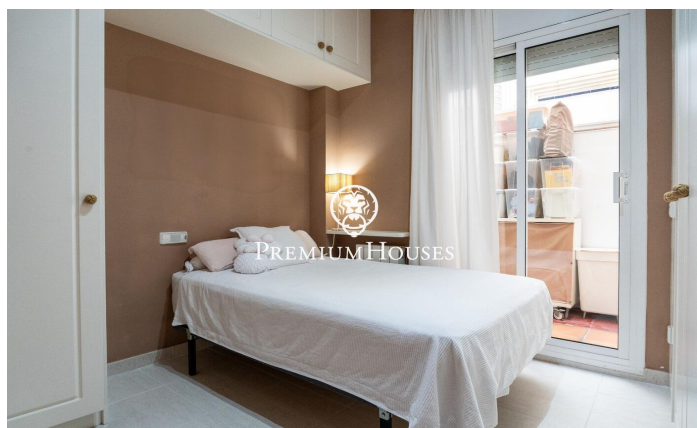
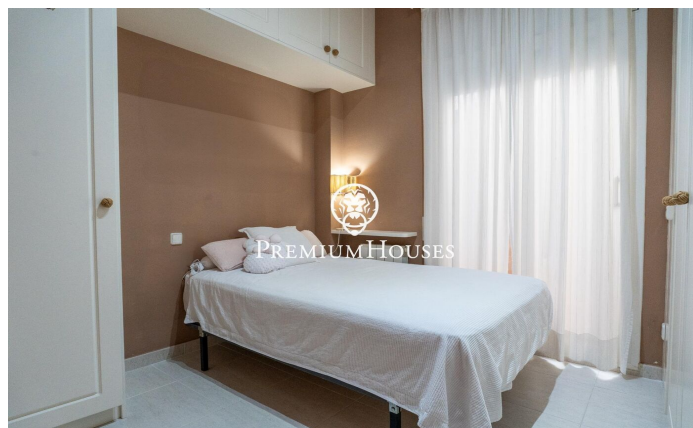
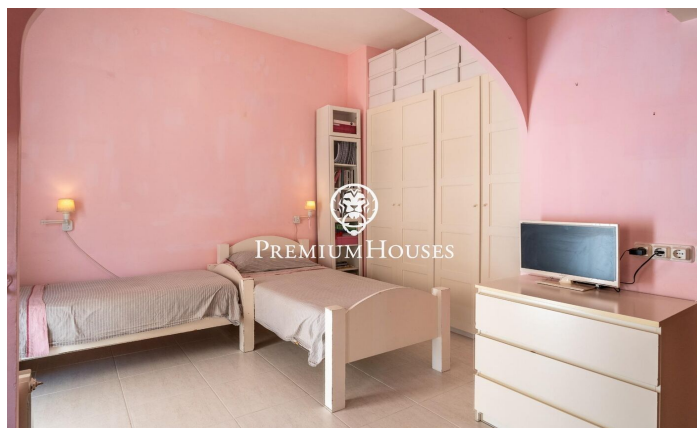
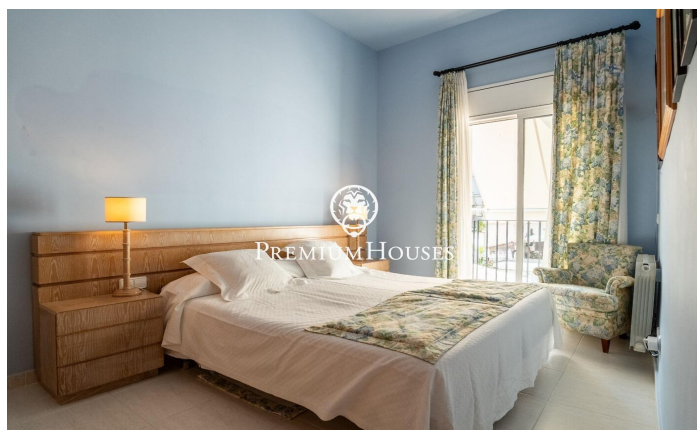
**PREMIUMHOUSES**

Excellence in Real Estate

Avda. Camí dels Capellans, 75

Local 4 Sitges

Tel: +34 93 809 72 40



Contact us for more information or to arrange a viewing

Tel: +34 93 809 72 40

[sitges@premiumhouses.com](mailto:sitges@premiumhouses.com)

[www.premiumhouses.es](http://www.premiumhouses.es)