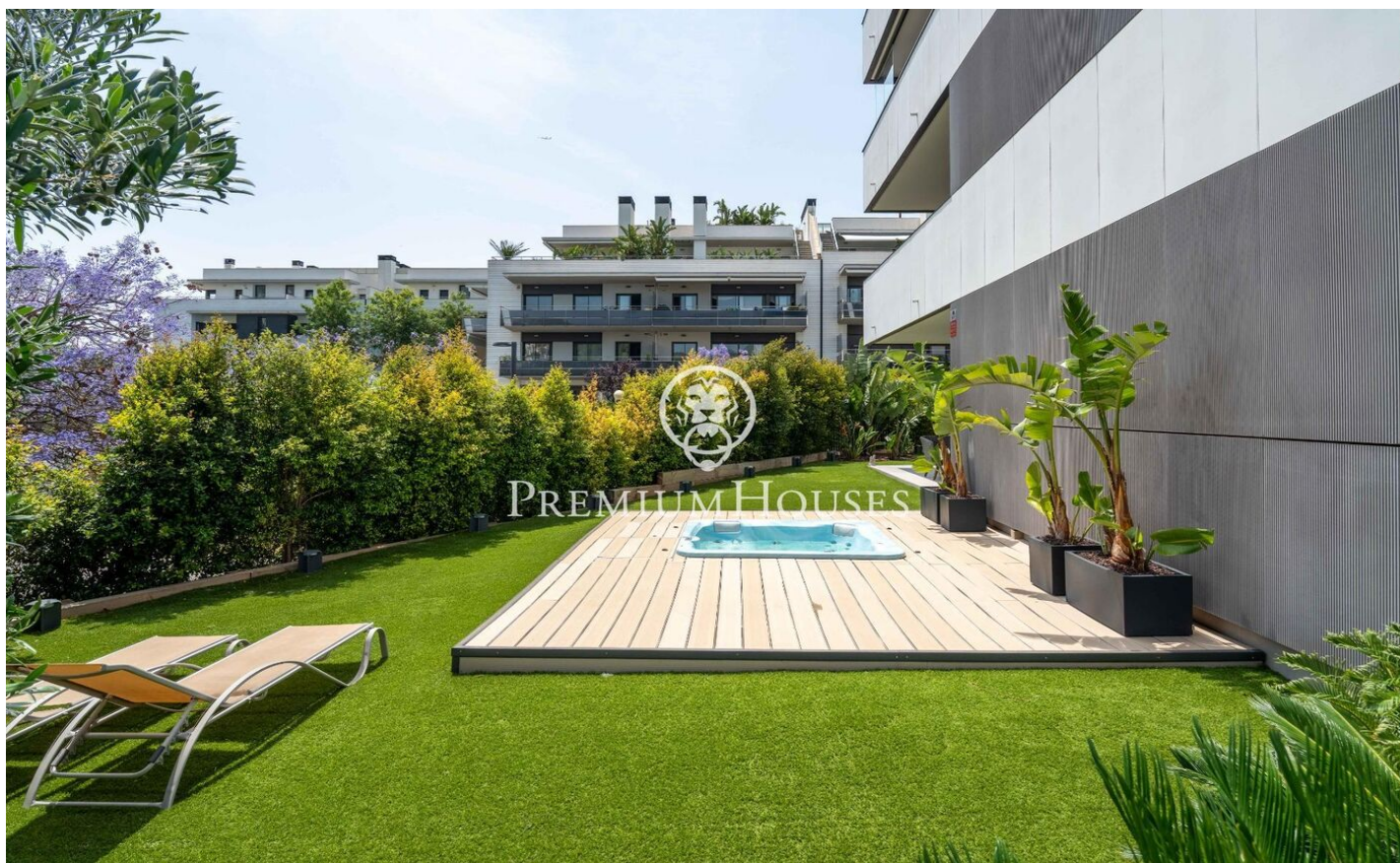




## Ground Floor with Large Garden in Aiguadolç

Ref: PHS101120



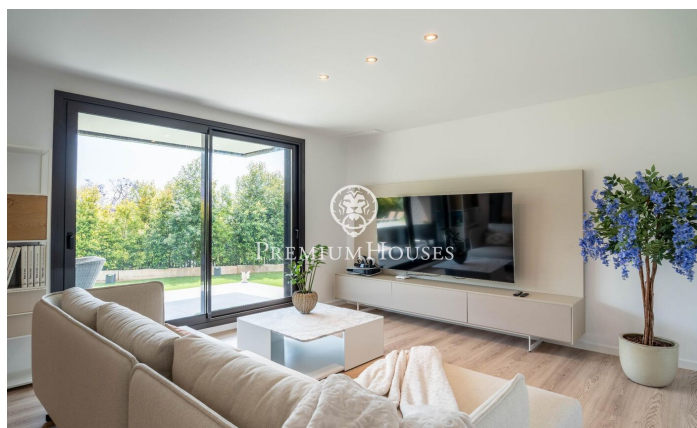
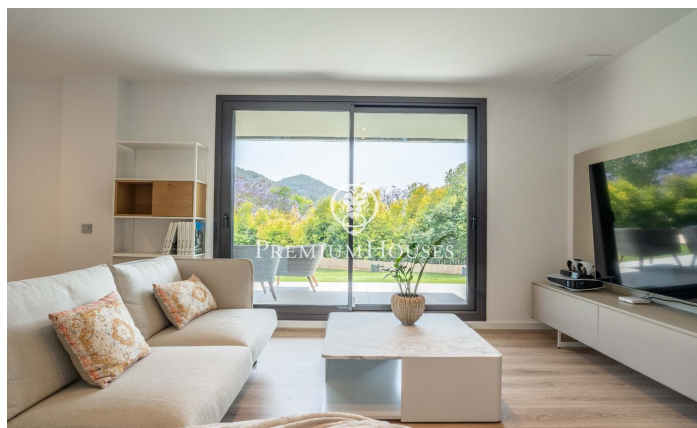
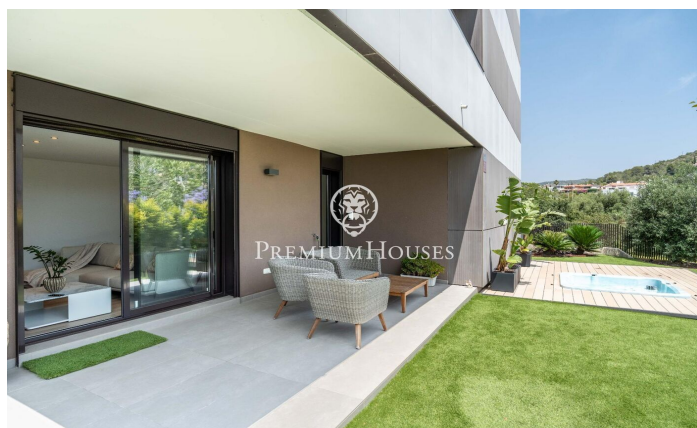
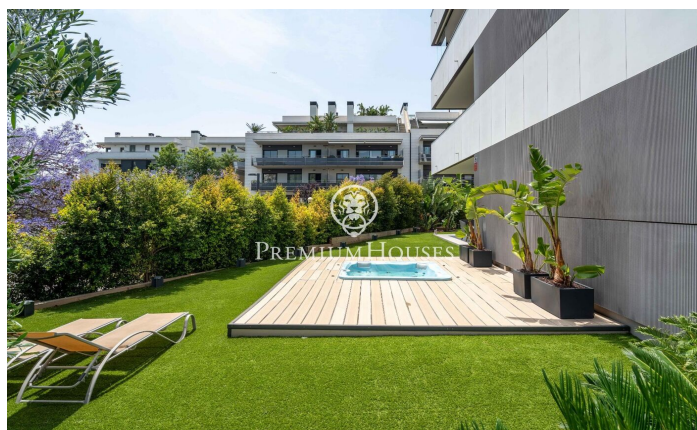
### Aiguadolç / Sitges

In the Aiguadolç neighborhood of Sitges, we have this recently built corner ground floor apartment. The property is in a community with an elevator, a swimming pool, and common areas. The ground floor has an outdoor space with a large garden and a jacuzzi. The home also has a parking space. The property is divided into a living area with a spacious living-dining room and a separate kitchen. Both rooms lead to the large private garden where there is a jacuzzi. This space has been tastefully renovated for year-round enjoyment. A laundry room completes the living area. The sleeping area features a suite, a double bedroom, and a single bedroom. A full bathroom serves this floor. The Aiguadolç neighborhood of Sitges is known for its tranquility. It is an area with many restaurants in the marina area and a convenient location with respect to the beach. All this without sacrificing good connections to the coastal road as well as the C-32 motorway to Barcelona and the airport.

**€960,000**

108 m<sup>2</sup>  
3 Bedrooms  
2 Bathrooms  
A/C  
Heating  
Mountain views  
Lift  
Phone  
Parking  
Terrace  
Built in closets



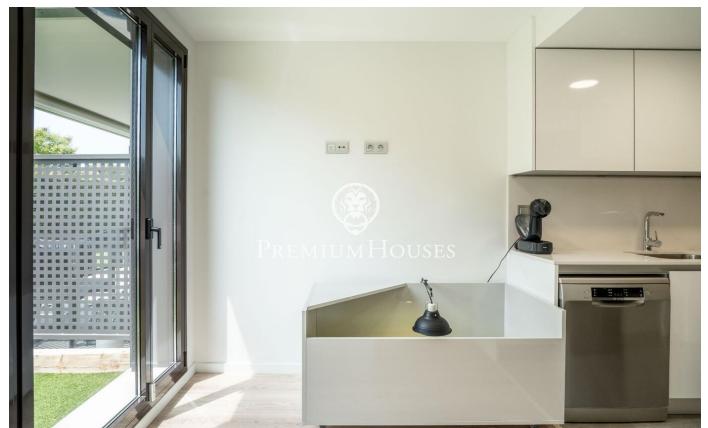






**PREMIUMHOUSES**  
Excellence in Real Estate

Avda. Camí dels Capellans, 75  
Local 4 Sitges  
Tel: +34 93 809 72 40

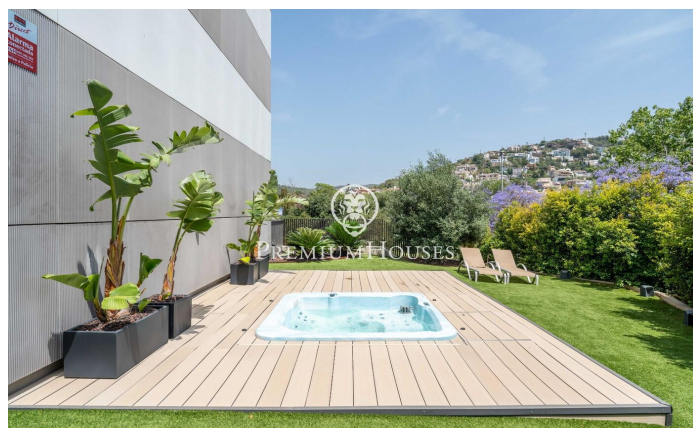
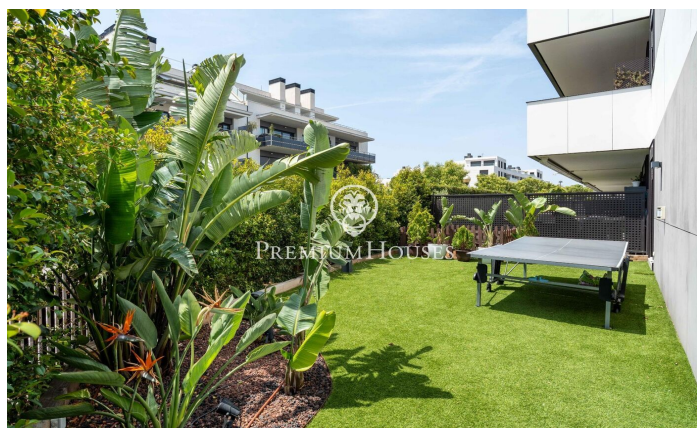






**PREMIUMHOUSES**  
Excellence in Real Estate

Avda. Camí dels Capellans, 75  
Local 4 Sitges  
Tel: +34 93 809 72 40



Contact us for more information or to arrange a viewing

Tel: +34 93 809 72 40

[sitges@premiumhouses.com](mailto:sitges@premiumhouses.com)

[www.premiumhouses.es](http://www.premiumhouses.es)