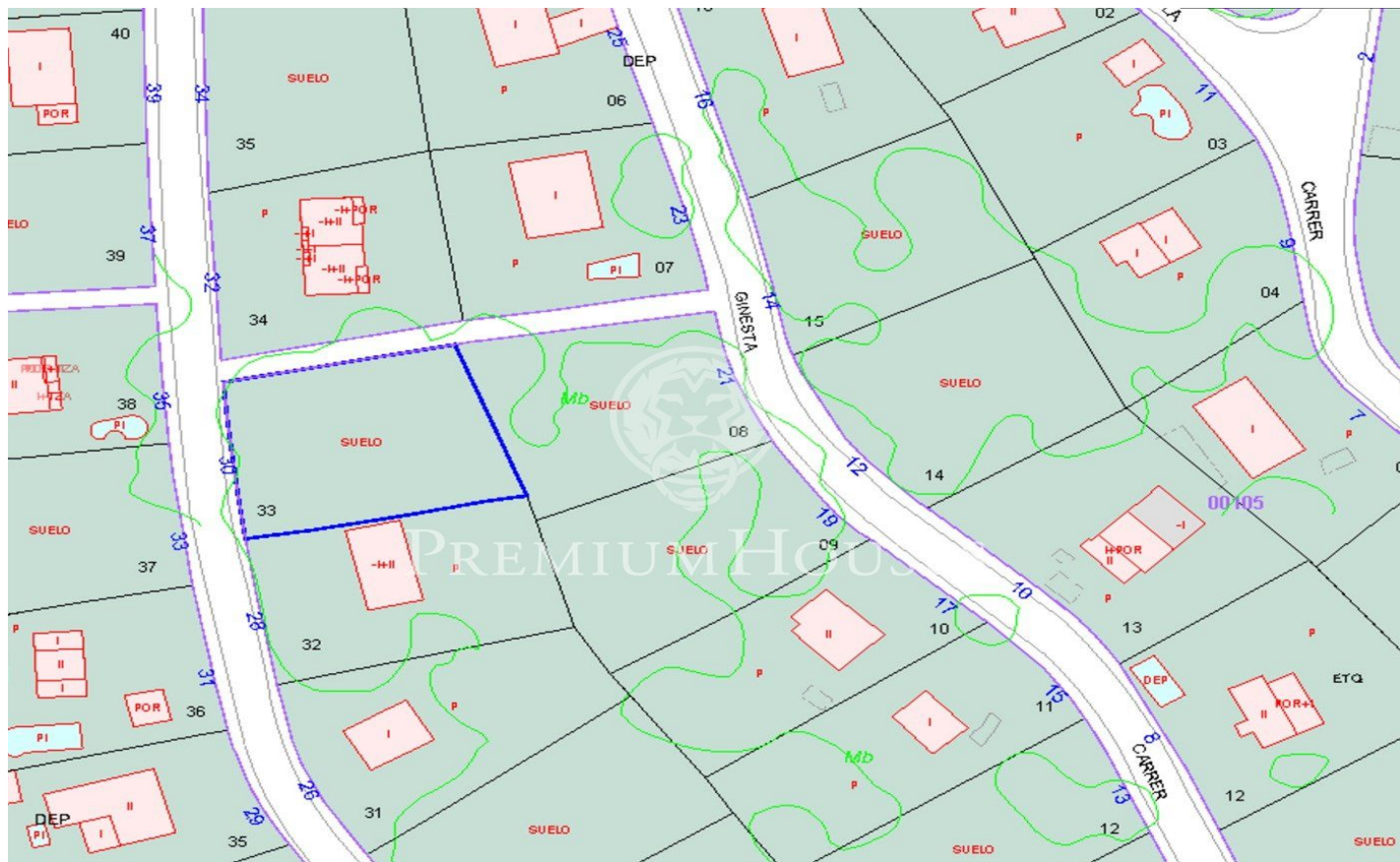




## Land for Sale with views of the Garraf in Pineda Park- Sant Pere de Ribes

Ref: 15336



### Sant Pere de Ribes / Barcelona Costa Sur

Nice land 860.60m<sup>2</sup> fully developable. It has open views of the Garraf Natural Park. Land for a single-family house, 345m<sup>2</sup> can be built. Great opportunity to acquire a good land at a very interesting price. He has an architectural project done. The plot has 862 m<sup>2</sup> without building and you can build a single-family home with a maximum floor area of 129 m<sup>2</sup> and a total of 388 m<sup>2</sup>, on the ground floor + first floor + attic. Urban planning regulations (10.1gb – Isolated low-density building): Minimum plot 800m<sup>2</sup> Maximum buildability of 0.45m<sup>2</sup>/m<sup>2</sup> land Maximum occupancy 15% Minimum facade of 20m<sup>2</sup> Maximum regulatory height 11m = ground floor Auxiliary construction: Within 15% of maximum occupancy Permitted use: Isolated building. Pineda Park is an urbanization belonging to the municipality of Sant Pere de Ribes that is booming and experiencing great growth, and in the heart of Garraf Park. Very well connected to the C-32 and a few minutes from Sitges.

**€96,000**

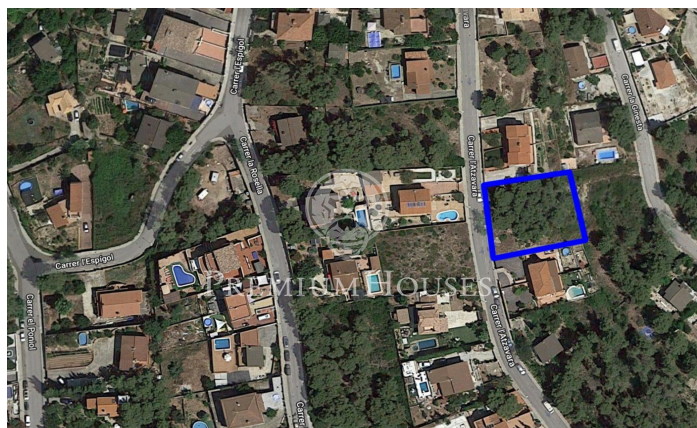
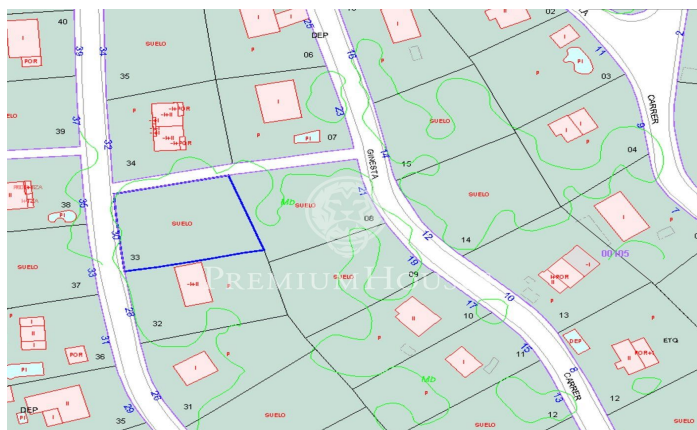
862 m<sup>2</sup> plot





**PREMIUMHOUSES**  
Excellence in Real Estate

Avda. Camí dels Capellans, 75  
Local 4 Sitges  
Tel: +34 93 809 72 40







**PREMIUMHOUSES**  
Excellence in Real Estate

Avda. Camí dels Capellans, 75  
Local 4 Sitges  
Tel: +34 93 809 72 40



Contact us for more information or to arrange a viewing

Tel: +34 93 809 72 40

[sitges@premiumhouses.com](mailto:sitges@premiumhouses.com)

[www.premiumhouses.es](http://www.premiumhouses.es)

