



Masía with true privacy and project potential in the Montnegre Natural Park

Ref: PH103704



Sant Iscle de Vallalta / Maresme/Barcelona Costa Norte

Located in the heart of the Montnegre Natural Park, just 5 minutes from the village of Sant Iscle de Vallalta and 15 minutes from the motorway and the coast, this masía offers a rare combination of privacy, nature and connectivity. The property sits on a 40,000 m² plot, with open views, forest areas and several flat sections of land, providing a true sense of peace without complete isolation. The main house offers 122 m² of registered living space, fully habitable, featuring spacious rooms, exposed wooden beams, a central fireplace and a large kitchen with direct access to a covered porch. In addition, there is an extra area partially built, offering excellent potential for expansion or the development of a complementary project. Outdoor features include: Fully functional swimming pool Private water well and water reservoir Electricity connected to the main grid Outdoor areas ideal for gatherings, leisure or open-air activities Access is via a dirt road of approximately 5 minutes, suitable for a regular car, ensuring true privacy and disconnection, a key value for the right buyer. This property is particularly well suited for a mixed-use profile: private residence combined with a rural tourism project, retreats, wellness or creative activities. This is not a conventional home....

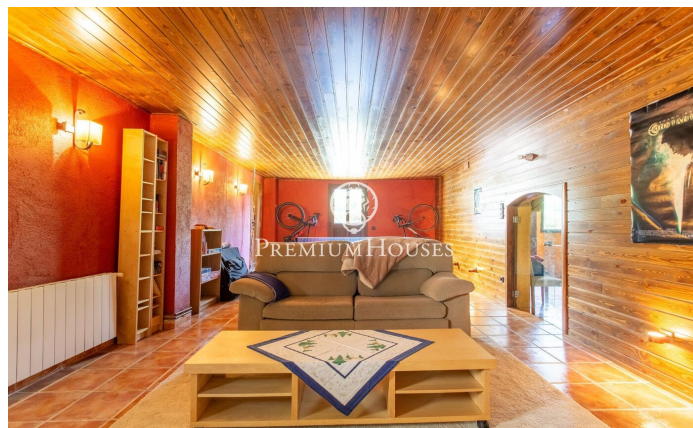
€709,000

122 m²
6 Bedrooms
3 Bathrooms
40,000 m² plot
Pool
Heating
Backyard
Phone
Fireplace
Terrace



PREMIUMHOUSES
Excellence in Real Estate

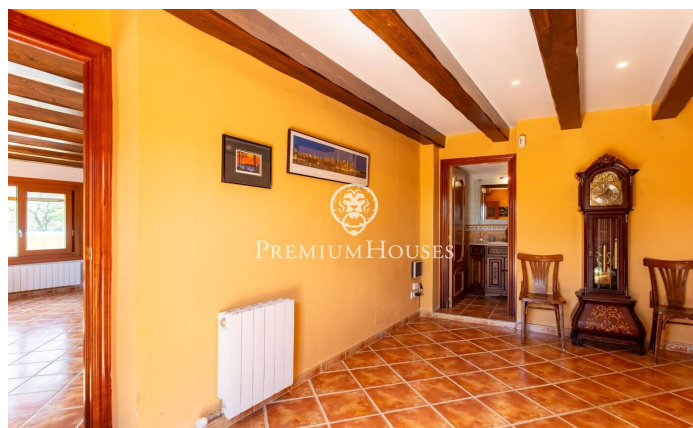
Avda. Maresme, 143 Mataró
Tel: +34 93 798 88 99





PREMIUMHOUSES
Excellence in Real Estate

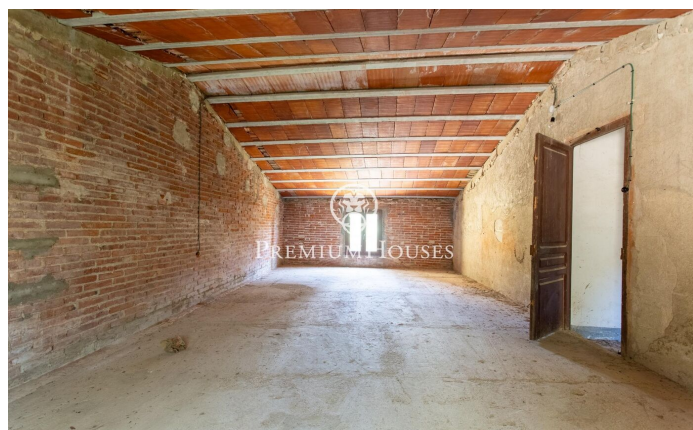
Avda. Maresme, 143 Mataró
Tel: +34 93 798 88 99





PREMIUMHOUSES
Excellence in Real Estate

Avda. Maresme, 143 Mataró
Tel: +34 93 798 88 99



Contact us for more information or to arrange a viewing

Tel: +34 93 798 88 99

info@premiumhouses.com

www.premiumhouses.es