

## An 18-hectare historic estate with two 18th-century farmhouses and every modern comfort, for sale in Sant Iscle de Vallalta

Ref: PH103506



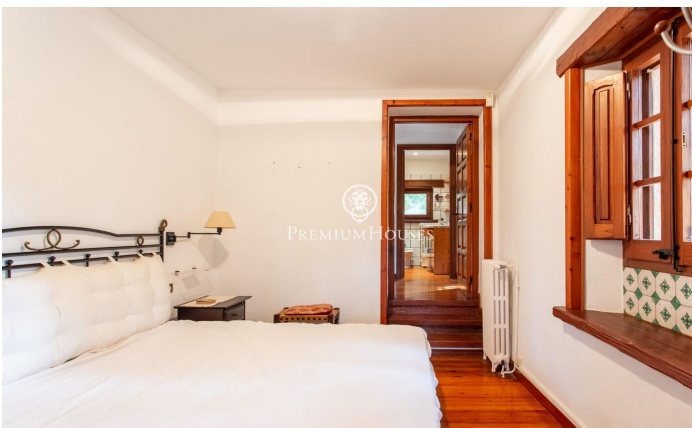
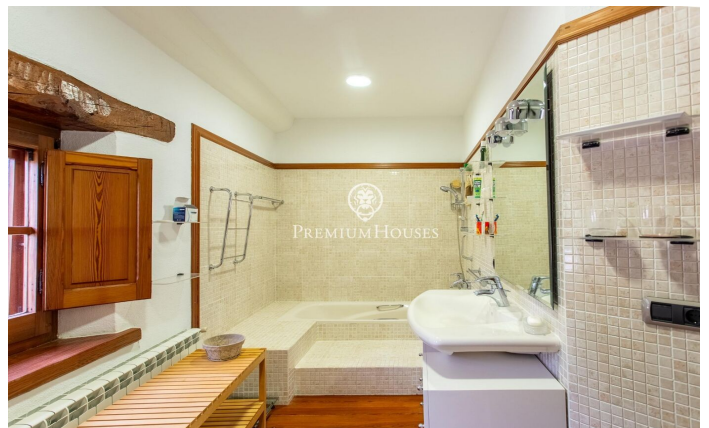
### Sant Iscle de Vallalta / Maresme/Barcelona Costa Norte

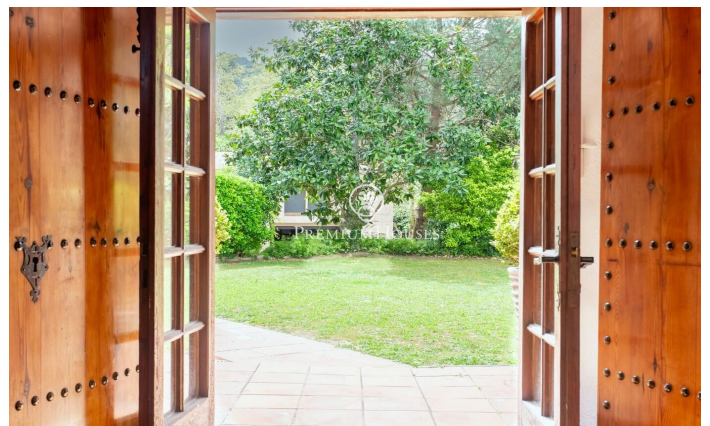
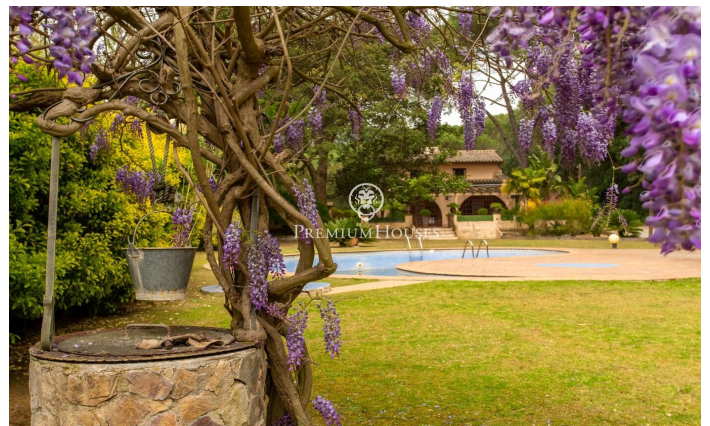
Located in the heart of the Corredor i Montnegre Natural Park, this property is a real gem. An oasis of complete privacy with no neighbours nearby, where 18th-century history blends with high-end modern facilities, just 5 km from the beaches of Sant Pol de Mar and 30 minutes from Barcelona. The Residential Complex: Tradition and Versatility The estate comprises two fully restored and listed stately farmhouses, offering a unique potential for both residential and commercial use in the area. Can Jana Farmhouse (447 m<sup>2</sup>): The crown jewel. An 18th-century property in perfect condition. Highlights include a large living-dining room with a fireplace, a kitchen with a pantry, an office, a dressing area and covered porches leading out to an immaculate garden. Can Llicó Farmhouse (297 m<sup>2</sup>): A second historic property with a special charm. It features a traditional kitchen with a fireplace, as well as a modern one. It has an integrated self-contained apartment, ideal for guests or staff, and a large central courtyard that brings outdoor living to life. Casa de Masoveros (75 m<sup>2</sup>): Additional property with 3 bedrooms and a kitchen, perfect for caretakers or estate management. Luxury and Wellness Facilities Beyond the properties, the estate is equipped to offer a first-class living (or busin...

**€1,349,000**

1,170 m<sup>2</sup>  
6 Bedrooms  
5 Bathrooms  
180,000 m<sup>2</sup> plot  
Pool  
Heating  
Backyard  
Gym  
Parking  
Terrace  
Balcony  
Built in closets







Contact us for more information or to arrange a viewing

Tel: +34 93 798 88 99

[info@premiumhouses.com](mailto:info@premiumhouses.com)

[www.premiumhouses.es](http://www.premiumhouses.es)