

House for sale finished new construction corner house with mountain and sea views.

Ref: PH103022



Sant Andreu de Llavaneres / Maresme/Barcelona Costa Norte

The house is in a quiet area, and is distributed over 2 floors plus garage. The main floor has a spacious living-dining room with large windows that give access to a large porch and the garden with private saline pool. The kitchen is fully equipped, with all appliances, and also has direct access to the garden. The property has a very practical guest suite on the ground floor. On the upper floor there is a master suite with private terrace, dressing room and bathroom with hydro-massage bathtub, all bedrooms have built-in wardrobes. One junior suite plus two double bedrooms sharing a bathroom. All of them with natural light. In the basement, a spacious garage of 139,23 m2 for 8 vehicles, with a large polyvalent room ideal for teenagers room, games room or home cinema and machine room with storage room. The house is equipped with the latest technologies. New construction! The advertised price + 10 % VAT

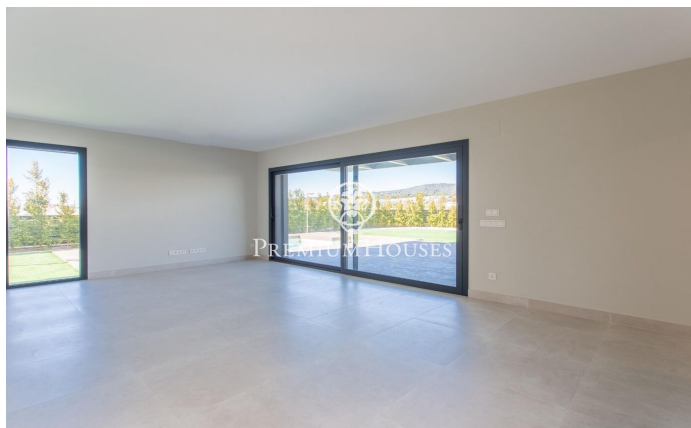
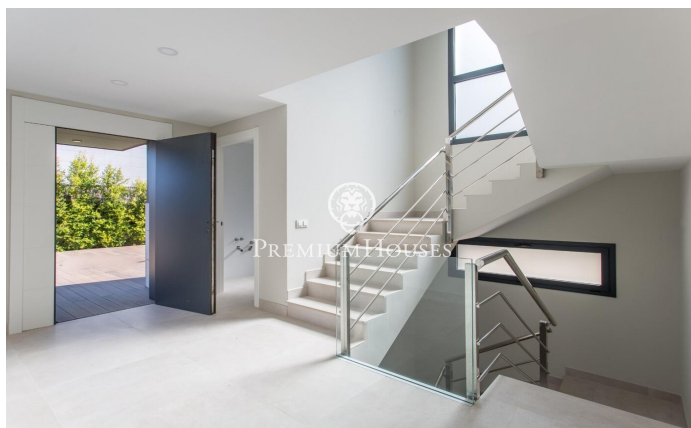
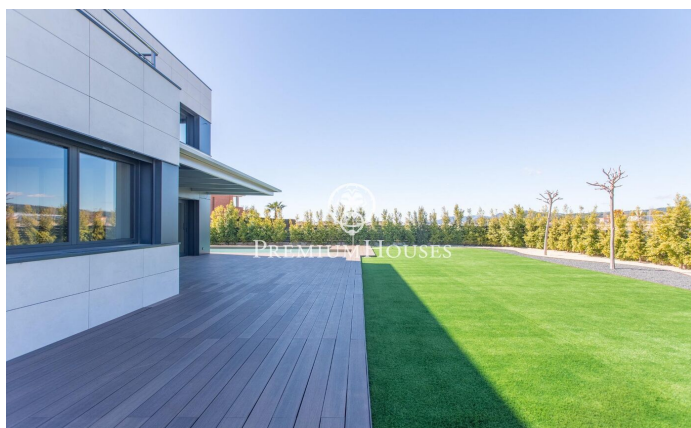
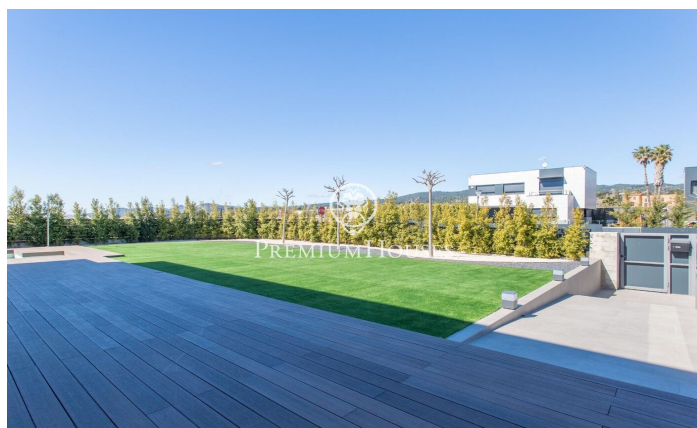
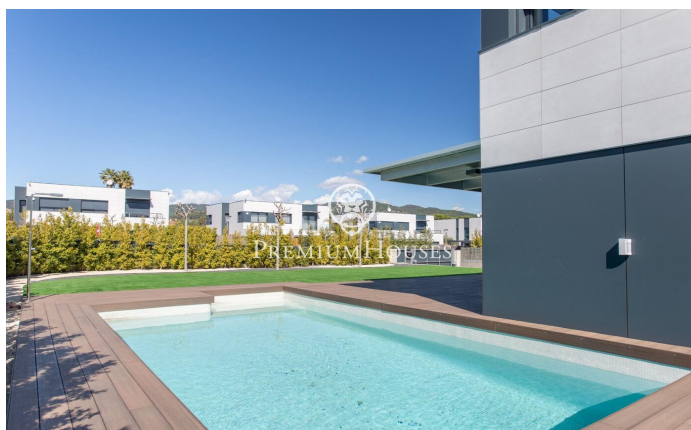
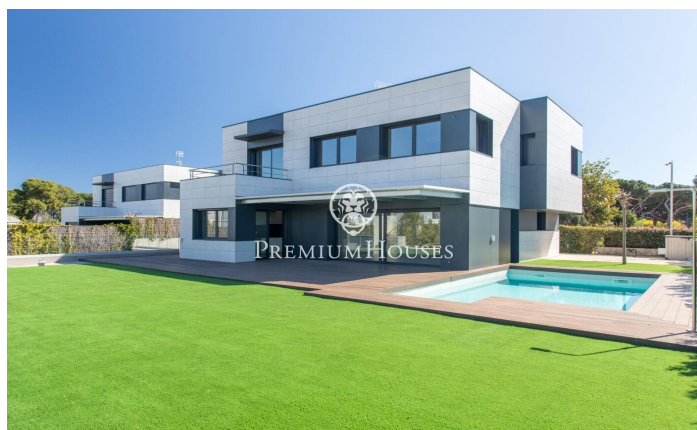
€1,300,000

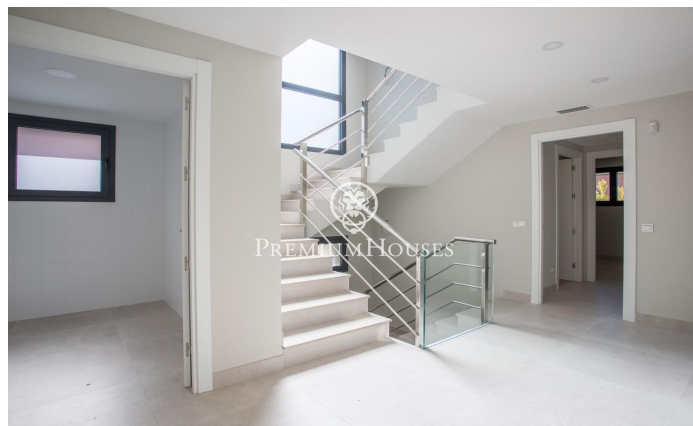
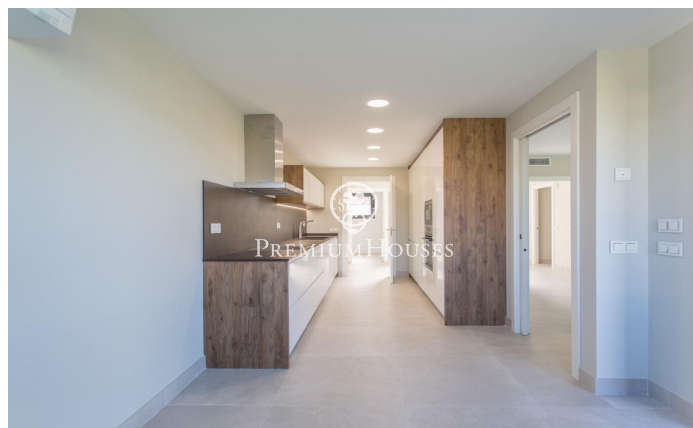
464 m²
5 Bedrooms
4 Bathrooms
700 m² plot
Pool
A/C
Heating
Sea views
Security
Parking
Balcony
Built in closets



PREMIUMHOUSES
Excellence in Real Estate

Avda. Maresme, 143 Mataró
Tel: +34 93 798 88 99

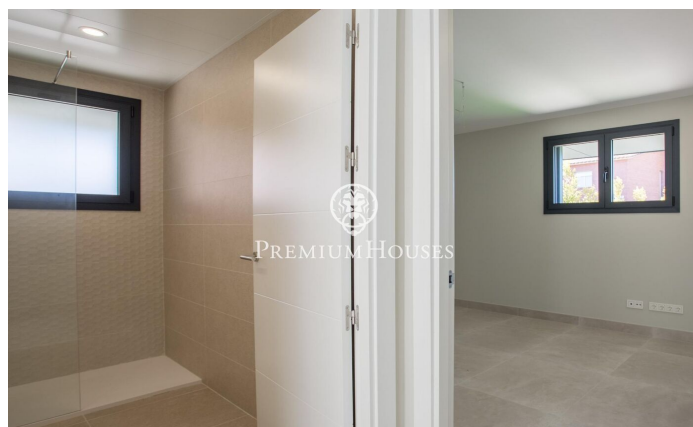






PREMIUMHOUSES
Excellence in Real Estate

Avda. Maresme, 143 Mataró
Tel: +34 93 798 88 99



Contact us for more information or to arrange a viewing

Tel: +34 93 798 88 99

info@premiumhouses.com

www.premiumhouses.es