

Exclusive new build houses with frontal sea views

Ref: PH102980

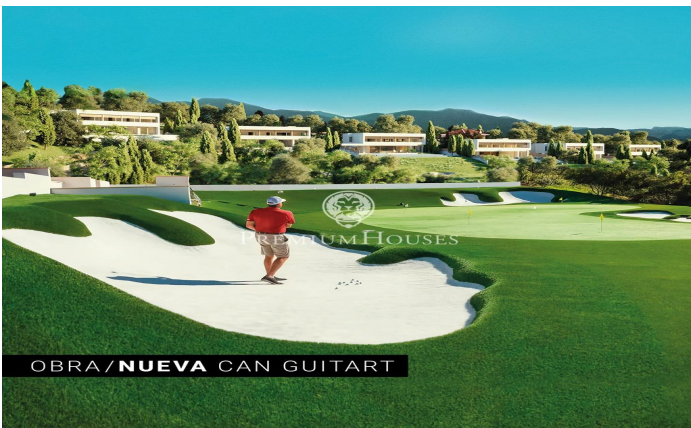
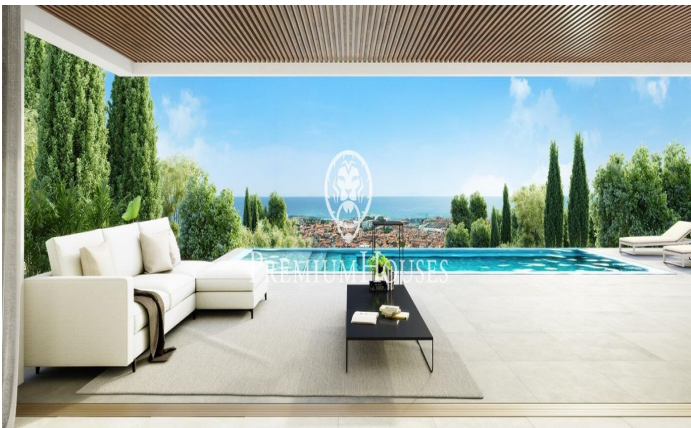
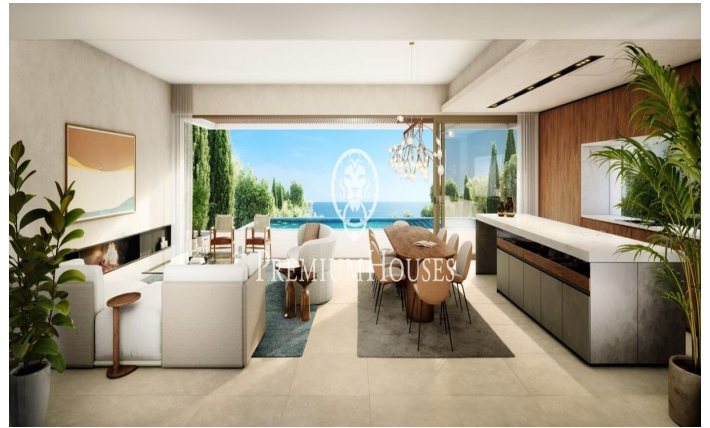


Sant Andreu de Llavaneres / Maresme/Barcelona Costa Norte

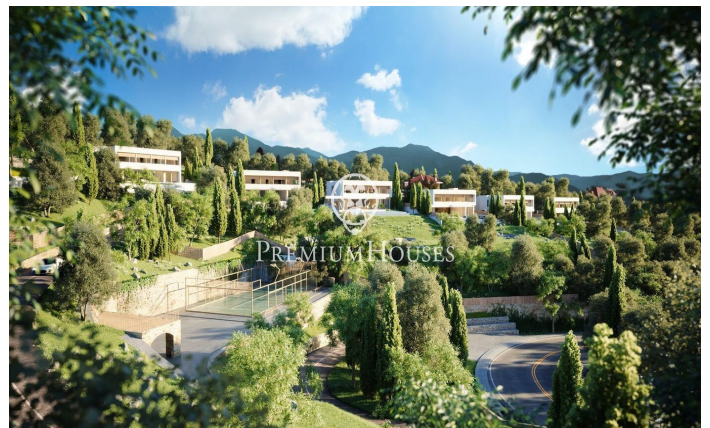
We present the most exclusive private residential complex with sea views in Sant Andreu de Llavaneras. Luxury and discretion define it. Discover the only luxury residential complex located in a private gated community, with stunning sea views. Located just five minutes from the charming village of Sant Andreu de Llavaneras, these properties are the perfect retreat for those seeking tranquility and elegance. Sant Andreu de Llavaneras is a privileged town, famous for its microclimate that makes it a perfect place to enjoy the sun all year round. Here you will find first-class golf courses, the exclusive El Balis yacht harbour, as well as tennis and paddle tennis clubs to satisfy the most demanding. In addition, its varied gastronomic offer will allow you to enjoy a unique culinary experience. And best of all, you are only 30 minutes away from Barcelona, where you can enjoy its rich cultural and gastronomic offer. Don't miss the opportunity to live in a place where luxury and nature meet! With a total surface area of 19.810m², this residential complex of 6 single-family houses, each with a private garden and spectacular sea views. On entering the complex, we are greeted by a pleasant stroll through magnificent trees and low maintenance Mediterranean vegetation that leads direct...

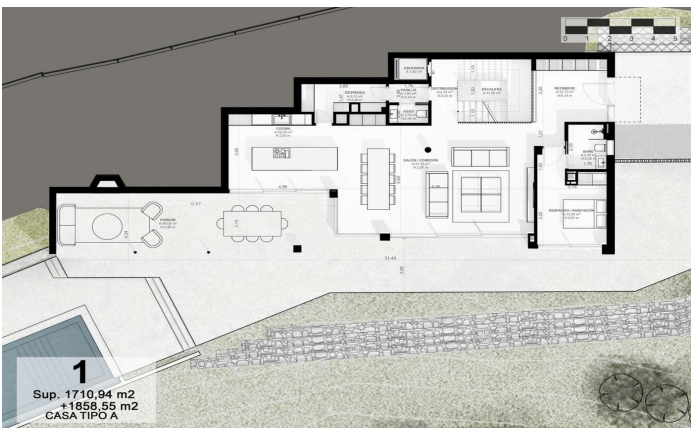
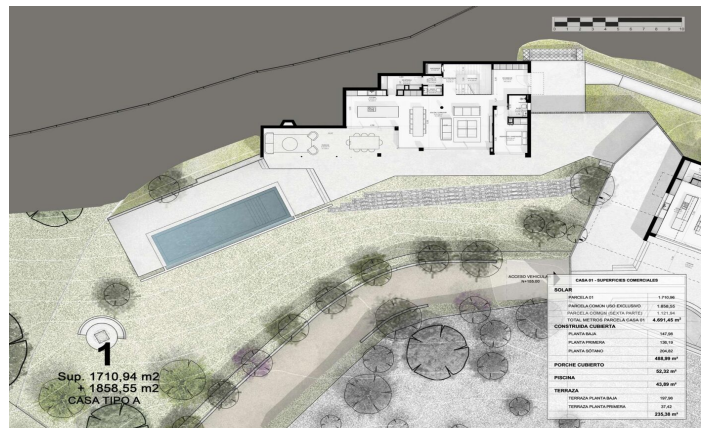
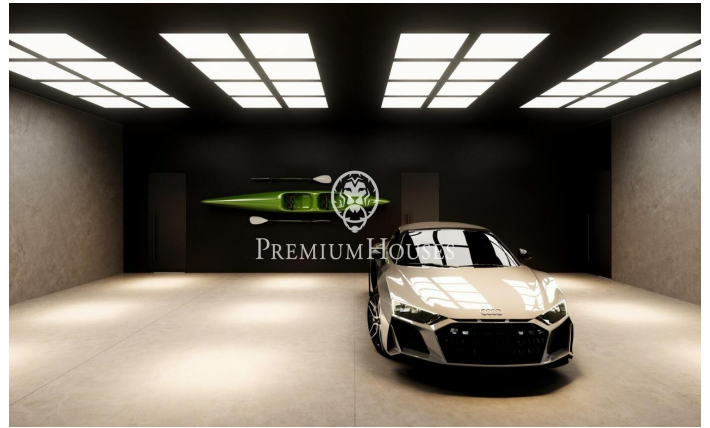
€2,950,000

589 m²
5 Bedrooms
5 Bathrooms
4,175 m² plot
Pool
A/C
Heating
Sea views
Lift
Phone
Security
Gym
Parking
Built in closets



OBRA/**NUEVA** CAN GUITART





SUPERFICIES - ZONAS COMUNES CON GUSTART
 SIN SEREN NIEN COMBADO A CASA TIPO A

FINCA DE USO AGRARIO	2.064,00 m ²
FINCA DE ACCESO	4.137,85 m ²
	6.201,85 m ²

ANEXO A LAS VIVIENDAS

- ACCESO VECINO PRIVADO
- PISTA DE PÁDEL
- APARCAMIENTO DE COBERTA
- ZONA DE HUERTOS INDIVIDUALES
- ÁREAS DE PISCINAS Y ZONAS DE RECREO

CASA TIPO A - SUPERFICIES COMUNICABLES

SOLAR	1.710,94 m ²
FINCA DE USO AGRARIO	2.064,00 m ²
FINCA DE USO AGRARIO (CASA TIPO A)	1.710,94 m ²
TOTAL SUPERFICIE FINCA TIPO A	4.835,88 m ²

CONTENIDO COMUNICABLE

PLANTA FINCA	104,00 m ²
PLANTA COMUNICABLE	200,00 m ²
PORCHE COBERTO	482,88 m ²
FINCA	83,32 m ²
TERRAZA	428,00 m ²
TERRAZA PLANTA BAJA	100,00 m ²
TERRAZA PLANTA PRIMA	324,68 m ²

7
Sup. 6731,65 m²
ZONAS COMUNES

1
Sup. 1710,94 m²
+ 1858,55 m²
CASA TIPO A

1
Sup. 1710,94 m²
+ 1858,55 m²
CASA TIPO A

1
Sup. 1710,94 m²
+ 1858,55 m²
CASA TIPO A

