



House With Views in Corral d'en Cona

Ref: PHS100992



Cubelles / Barcelona Costa Sur

In the Corral d'en Cona neighborhood of Cubelles we find this house with a pool and garden. The house has clear views of the mountains. The common spaces of the house are large in size. The property consists of a main house and has an annex that consists of an independent apartment with views of the vineyards. The house is distributed over three floors. On the main floor is the day area, which consists of a living-dining room and a kitchen-dining room. From the last one you can access a summer dining room and a barbecue. Next we have three double bedrooms and a full bathroom that serves the entire floor. On the first floor we have the night area. It is composed of an en-suite room with a dressing room and a study with access to a terrace. On the lower floor the house has an independent apartment, an open room and a garage with space for four cars. The independent apartment is made up of a double room, a single room and a full bathroom. The independent apartment has a terrace with stunning views of the vineyards. The Corral d'en Cona neighborhood is characterized by enjoying a privileged location with respect to the Garraf Natural Park without giving up an optimal connection to the C-32 towards Barcelona.

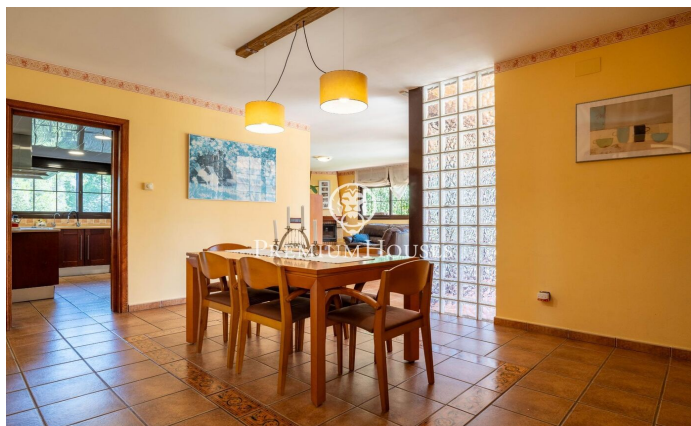
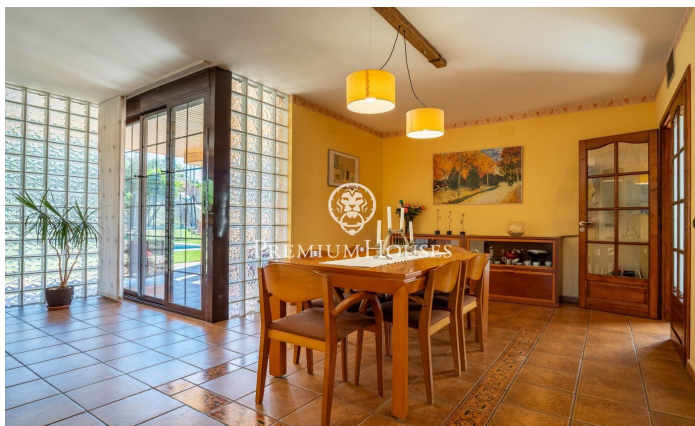
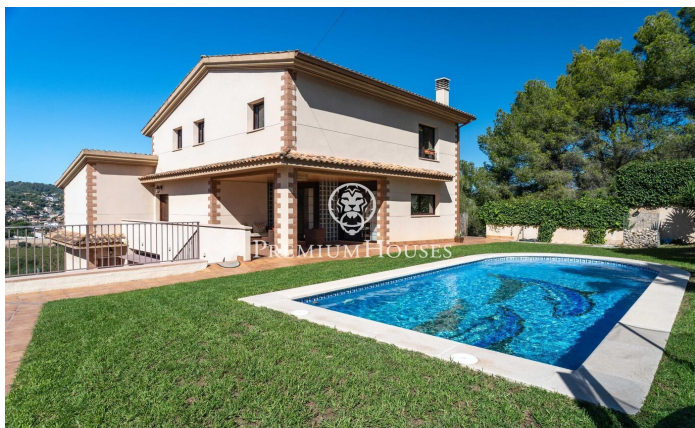
€699,900

423 m²
6 Bedrooms
3 Bathrooms
860 m² plot
Pool
Heating
Mountain views
Storage
Phone
Fireplace
Parking
Built in closets



PREMIUMHOUSES
Excellence in Real Estate

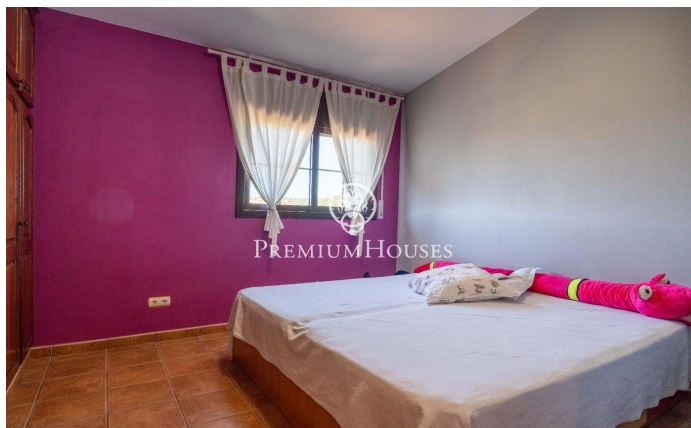
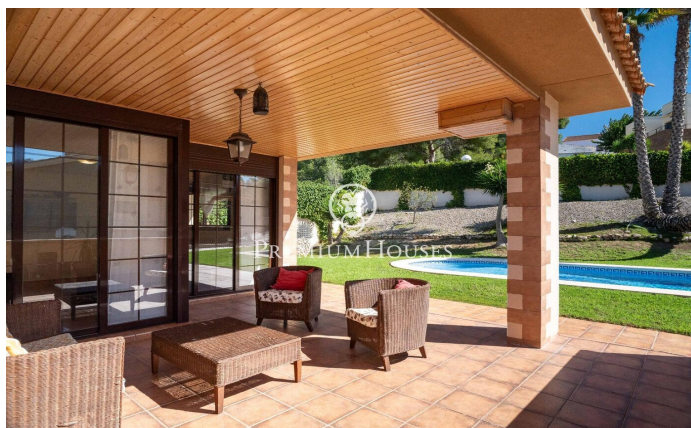
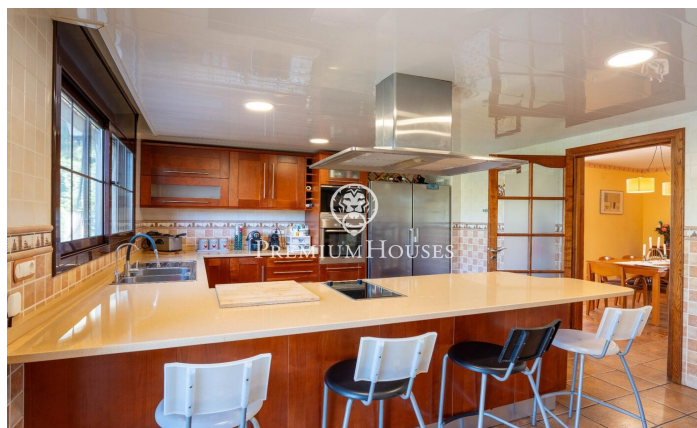
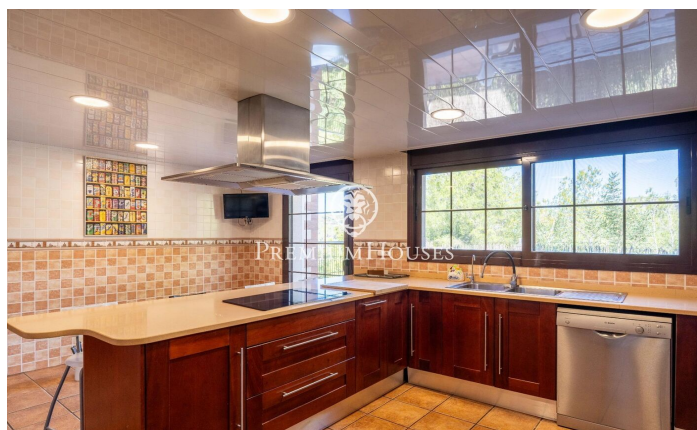
Avda. Camí dels Capellans, 75
Local 4 Sitges
Tel: +34 93 809 72 40





PREMIUMHOUSES
Excellence in Real Estate

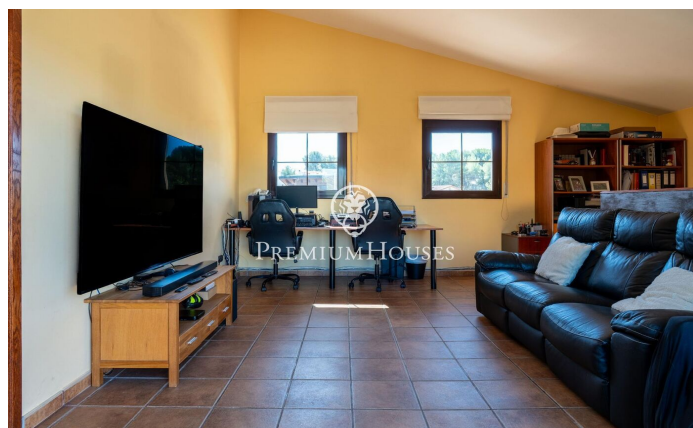
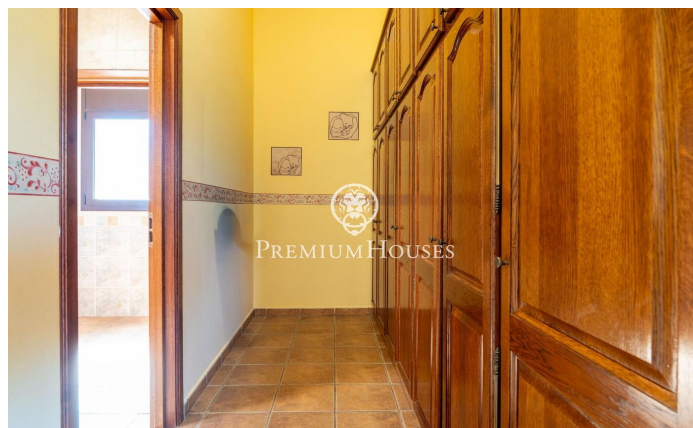
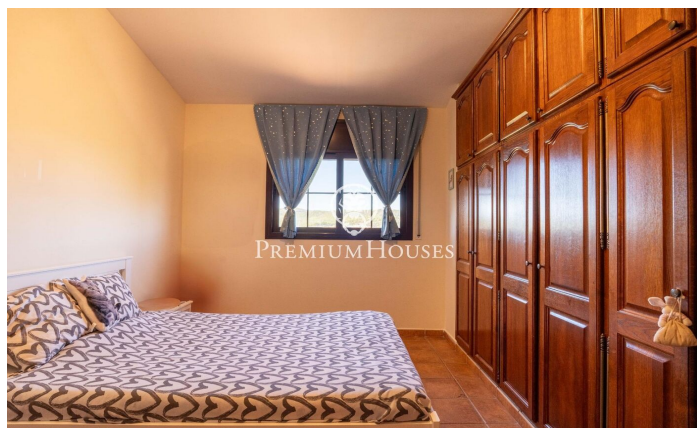
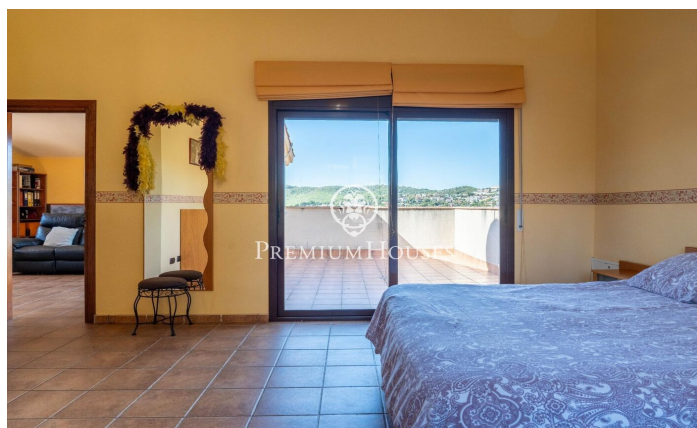
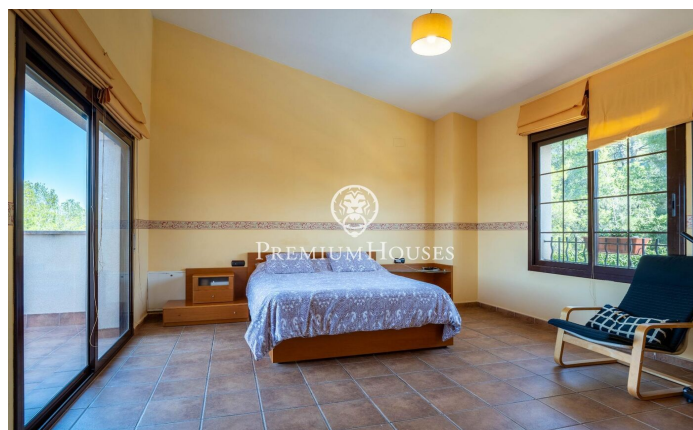
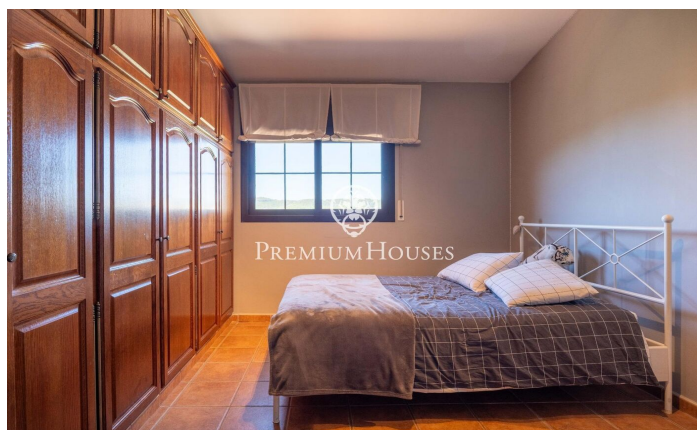
Avda. Camí dels Capellans, 75
Local 4 Sitges
Tel: +34 93 809 72 40





PREMIUMHOUSES
Excellence in Real Estate

Avda. Camí dels Capellans, 75
Local 4 Sitges
Tel: +34 93 809 72 40



Contact us for more information or to arrange a viewing

Tel: +34 93 809 72 40

sitges@premiumhouses.com

www.premiumhouses.es