

## New development of sustainable homes with sea views in Caldes d'Estrac

Ref: PH103562

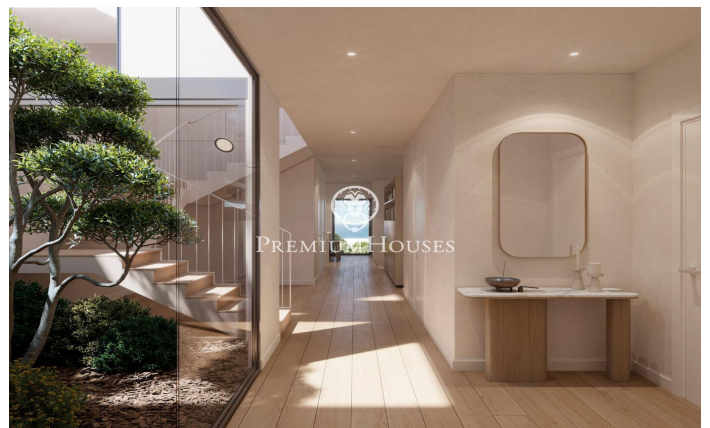
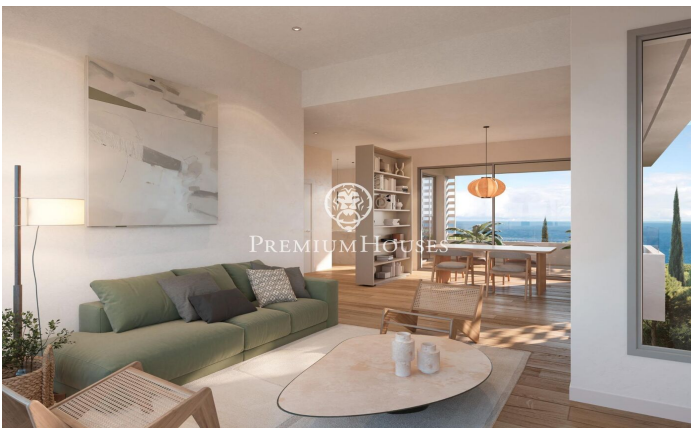


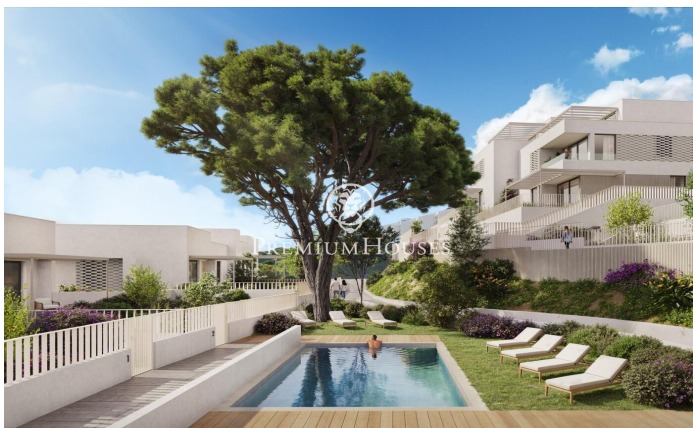
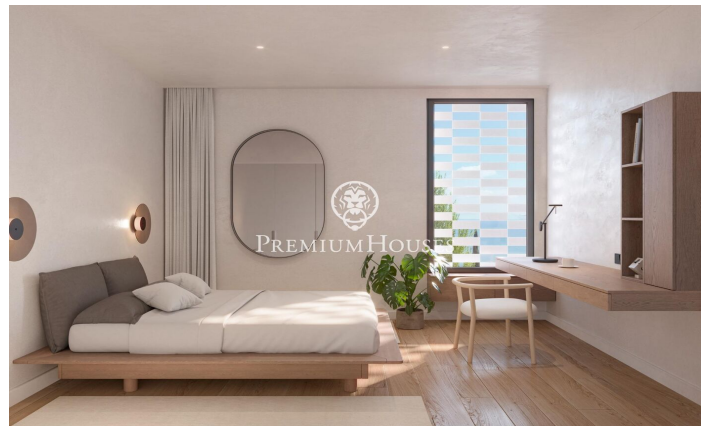
### Caldes d'Estrac / Maresme/Barcelona Costa Norte

Discover Residencial Morgana: an exclusive complex of eight newly built semi-detached homes, designed according to the principles of sustainability and circular economy that define Circular Homes' commitment. Located in the highest and most privileged area of the La Indiana residential complex, these homes have been carefully designed to offer the best of Mediterranean style in a unique natural setting. Thanks to their staggered layout, each home enjoys stunning sea views from every room, as well as excellent natural light and optimal ventilation, guaranteed by their triple orientation. The interiors are adapted to different lifestyles, with floor areas ranging from 250 to 260 m<sup>2</sup>. The homes offer spacious living areas and the possibility of choosing between 4 or 5 bedrooms and 3 or 4 bathrooms, responding to the needs of each family. Outside, each home has a private garden and large terraces, ideal for relaxing and enjoying the surroundings. They also include a closed garage, providing comfort and security for residents. The residential complex is completed with a communal swimming pool surrounded by gardens on different levels, creating an exclusive, intimate and relaxing atmosphere. With architecture that blends Catalan tradition with a contemporary and sustainable approach, R...

**€1,070,170**

252 m<sup>2</sup>  
4 Bedrooms  
3 Bathrooms  
230 m<sup>2</sup> plot  
Pool  
Heating  
Sea views  
Parking  
Terrace  
Built in closets







**VIVIENDA A-4**

SUPERFICIES	
ÚTIL	CONSTRUÍDA
Planta Sotano	180,00 m <sup>2</sup>
Planta Baja	40,00 m <sup>2</sup>
Planta Primera	40,00 m <sup>2</sup>
Planta Segunda	100,00 m <sup>2</sup>
Superficie aproximada	360,00 m <sup>2</sup>
Superficie útil construida	260,00 m <sup>2</sup>
Superficie cubierta	
Superficie cubierta	96,00 m <sup>2</sup>
Superficie total de parcela	136,00 m <sup>2</sup>

**LOCALIZACIÓN:**  
Límite 2º Domicilio, Barcelona

**DIRECCIÓN:**  
Límite 2º Domicilio y Calle Torrelles

**ESCALA GRÁFICA:**  
1:100

**PLANTA SÓTANO**      **PLANTA BAJA**      **PLANTA PRIMERA**

Mapa de la zona de Mataró y alrededores. El límite de parcela se indica con una línea roja. El límite de parcela se indica con una línea roja. El límite de parcela se indica con una línea roja.

**Barcelona Coast, the best place to live**  
Over 2,500 hours of sun per year

