

Construction has begun; completion is scheduled for the first quarter of 2028

Ref: PH103562

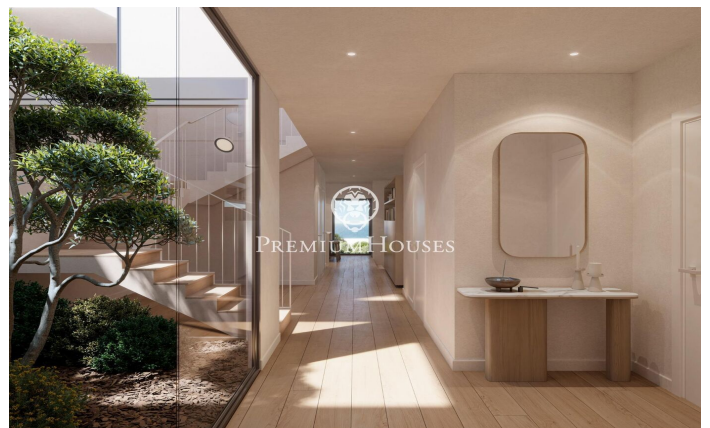
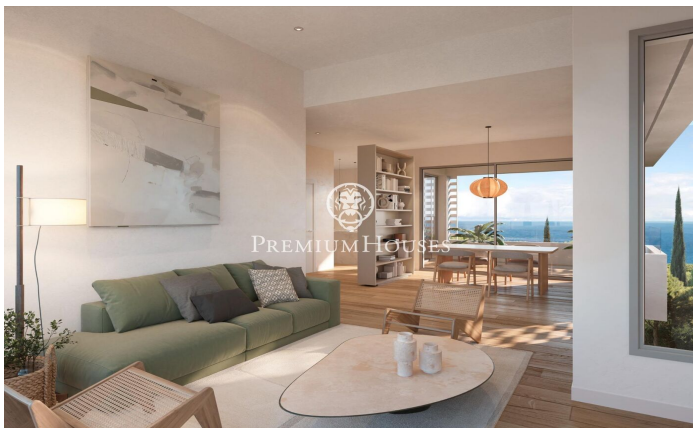


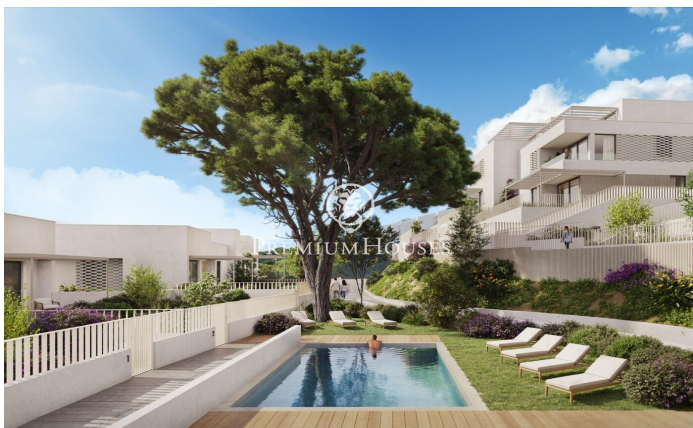
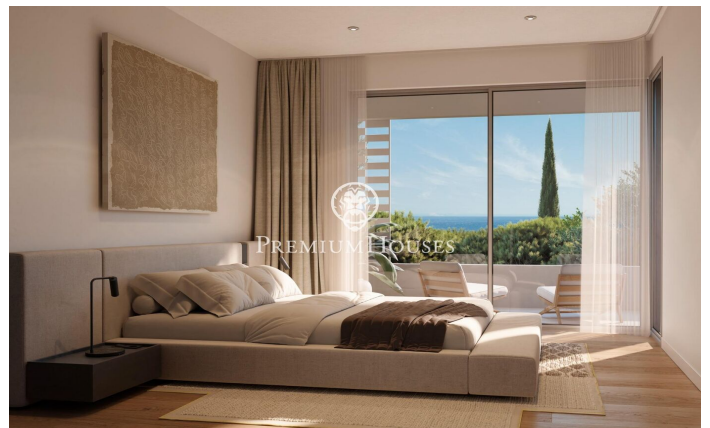
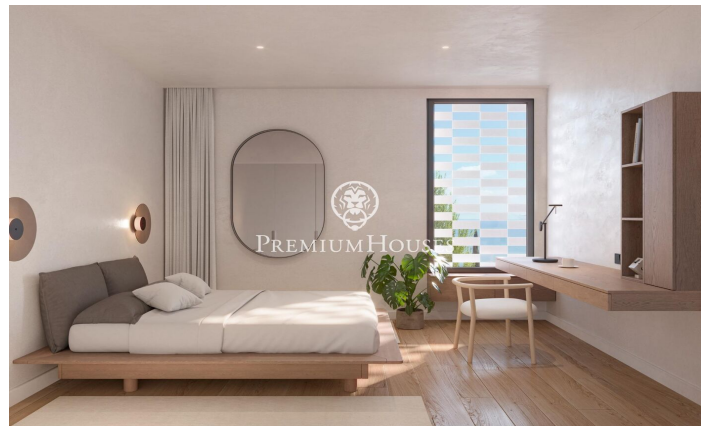
### Caldes d'Estrac / Maresme/Barcelona Costa Norte

Discover Residencial Morgana: an exclusive complex of eight newly built semi-detached homes, designed according to the principles of sustainability and circular economy that define Circular Homes' commitment. Located in the highest and most privileged area of the La Indiana residential complex, these homes have been carefully designed to offer the best of Mediterranean style in a unique natural setting. Thanks to their staggered layout, each home enjoys stunning sea views from every room, as well as excellent natural light and optimal ventilation, guaranteed by their triple orientation. The interiors are adapted to different lifestyles, with floor areas ranging from 250 to 260 m<sup>2</sup>. The homes offer spacious living areas and the possibility of choosing between 4 or 5 bedrooms and 3 or 4 bathrooms, responding to the needs of each family. Outside, each home has a private garden and large terraces, ideal for relaxing and enjoying the surroundings. They also include a closed garage, providing comfort and security for residents. The residential complex is completed with a communal swimming pool surrounded by gardens on different levels, creating an exclusive, intimate and relaxing atmosphere. With architecture that blends Catalan tradition with a contemporary and sustainable approach, R...

**€1,070,170**

252 m<sup>2</sup>  
4 Bedrooms  
3 Bathrooms  
230 m<sup>2</sup> plot  
Pool  
Heating  
Sea views  
Parking  
Terrace  
Built in closets







**VIVIENDA A-4**

SUPERFICIES	MTL	CONSTRUIDA
Superficie total	190,21 m <sup>2</sup>	200,00 m <sup>2</sup>
Plantas	60,00 m <sup>2</sup>	60,00 m <sup>2</sup>
Plantas bajas	60,00 m <sup>2</sup>	60,00 m <sup>2</sup>
Superficie exterior	60,75 m <sup>2</sup>	60,75 m <sup>2</sup>
Superficie aparcamiento	30,00 m <sup>2</sup>	30,00 m <sup>2</sup>
ALTERNANCIA TOTAL	200,00 m <sup>2</sup>	270,00 m <sup>2</sup>
ALTERNANCIA CONSTRUIDA		200,00 m <sup>2</sup>
Superficie exterior		60,75 m <sup>2</sup>
Superficie parking		30,00 m <sup>2</sup>
Superficie Total de parcela		200,00 m <sup>2</sup>

**LOCALIZACIÓN**  
Código Catastral: 08/00000

**DESCRIPCIÓN**  
Cadastral: 08/00000 y 08/00000

**REGISTRAR**  
Cadastral: 08/00000 y 08/00000

PLANTA SOTANO  
PLANTA BAJA  
PLANTA PRIMERA

**Barcelona Coast, the best place to live**  
Over 2,500 hours of sun per year

**48 Towns and villages to live seafrent**