

Construction has begun; completion is scheduled for the first quarter of 2028

Ref: PH103561

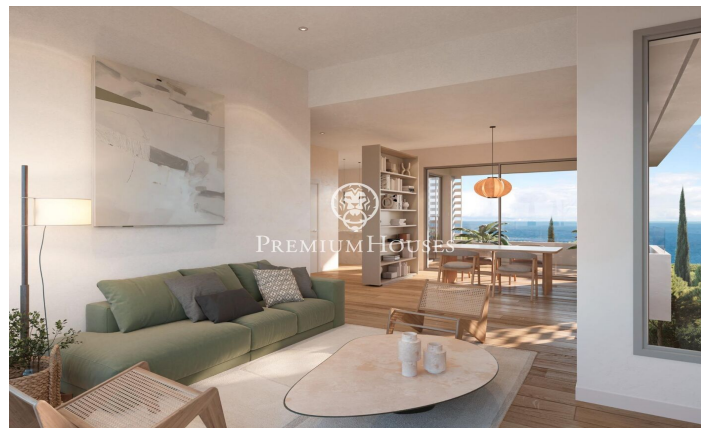
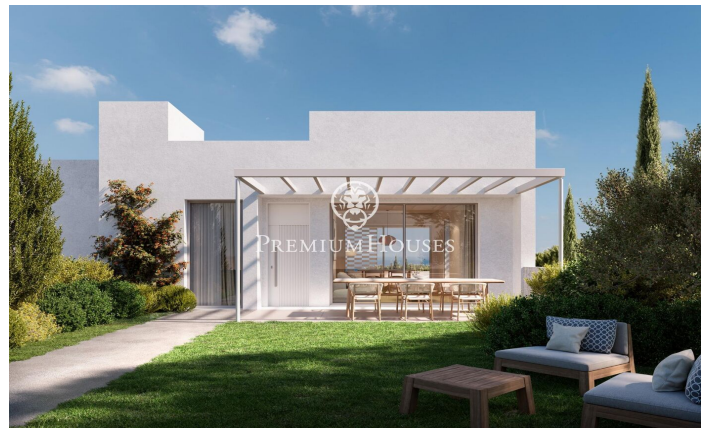
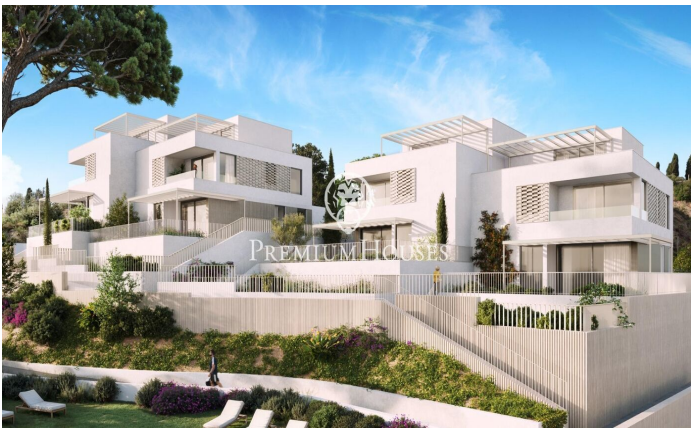


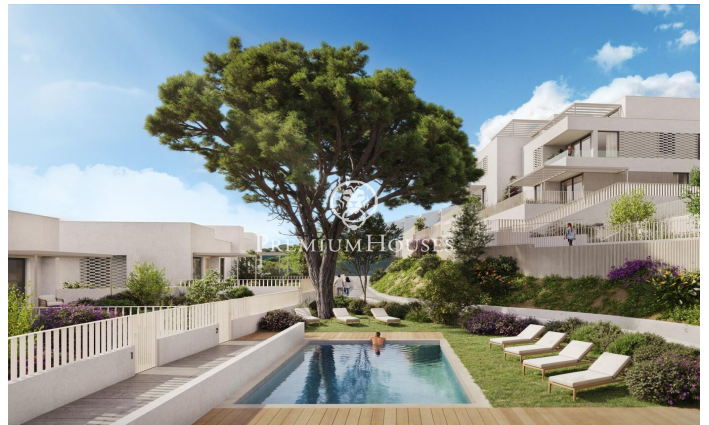
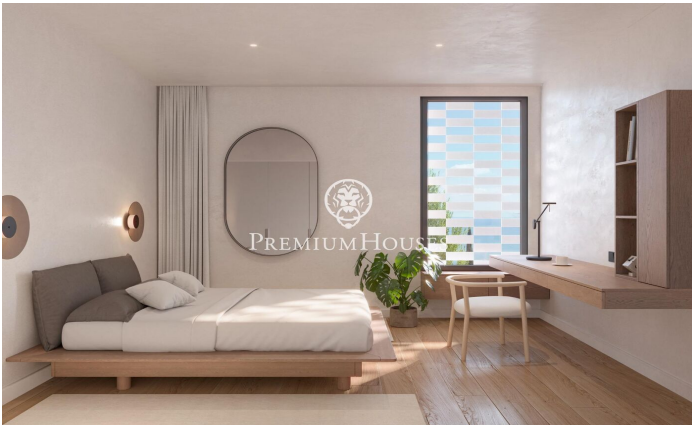
Caldes d'Estrac / Maresme/Barcelona Costa Norte

Discover Residencial Morgana: an exclusive complex of eight newly built semi-detached homes, designed according to the principles of sustainability and circular economy that define Circular Homes' commitment. Located in the highest and most privileged area of the La Indiana residential complex, these homes have been carefully designed to offer the best of Mediterranean style in a unique natural setting. Thanks to their staggered layout, each home enjoys stunning sea views from every room, as well as excellent natural light and optimal ventilation, guaranteed by their triple orientation. The interiors are adapted to different lifestyles, with floor areas ranging from 250 to 260 m². The homes offer spacious living areas and the possibility of choosing between 4 or 5 bedrooms and 3 or 4 bathrooms, responding to the needs of each family. Outside, each home has a private garden and large terraces, ideal for relaxing and enjoying the surroundings. They also include a closed garage, providing comfort and security for residents. The residential complex is completed with a communal swimming pool surrounded by gardens on different levels, creating an exclusive, intimate and relaxing atmosphere. With architecture that blends Catalan tradition with a contemporary and sustainable approach, R...

€998,070

252 m²
4 Bedrooms
3 Bathrooms
269 m² plot
Pool
Heating
Sea views
Parking
Terrace
Built in closets







VIVIENDA A-3

SUPERFICIES	DTL	CONSTRUCCION
Superficie interior	181,82 m ²	207,24 m ²
Plantilla	87,27 m ²	86,23 m ²
Plantilla exterior	20,00 m ²	20,00 m ²
Plantilla terraza	20,00 m ²	20,00 m ²
Superficie exterior	60,27 m ²	60,27 m ²
Superficie apartamento	38,57 m ²	38,57 m ²
SUPERFICIE TOTAL	230,07 m²	270,08 m²
Superficie parcela		131,45 m ²
Superficie parcela parcela		200,06 m ²

LOCALIZACION: Centro de Mataró, Barcelona
DIRECCION: Calle Luis Companys y Calle Tàrragona

ESCALA GRÀFICA: 1:100

PLANTA SOTANO
PLANTA BAJA
PLANTA PRIMERA

Barcelona Coast, the best place to live
Over 2,500 hours of sun per year

48 Towns and villages to live seafront

French Borderline
Ski resorts
Barcelona World
Port Aventura
Sitges
Barcelona
Mataró
Sant Pol de Mar
Mallorca
Ibiza