



## New development of sustainable homes with sea views in Caldes d'Estrac

Ref: PH103559



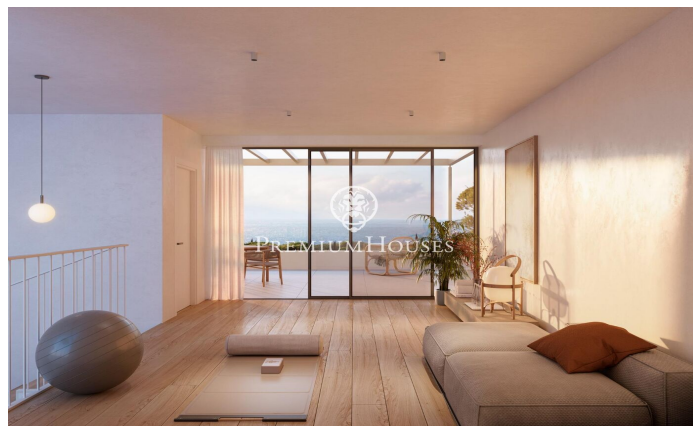
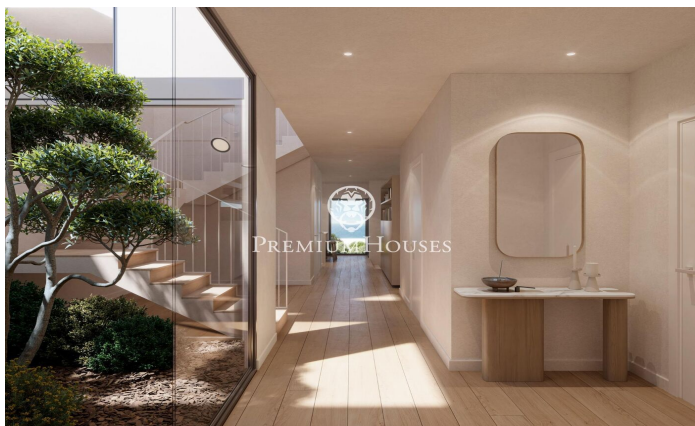
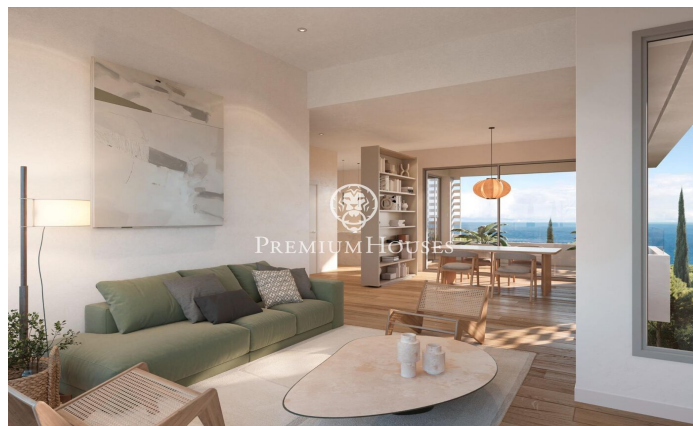
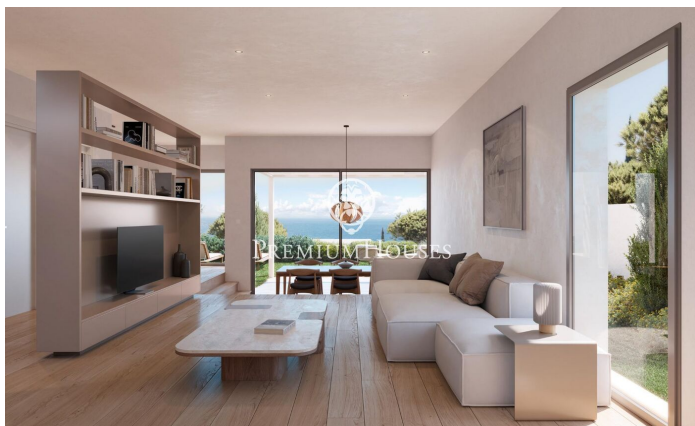
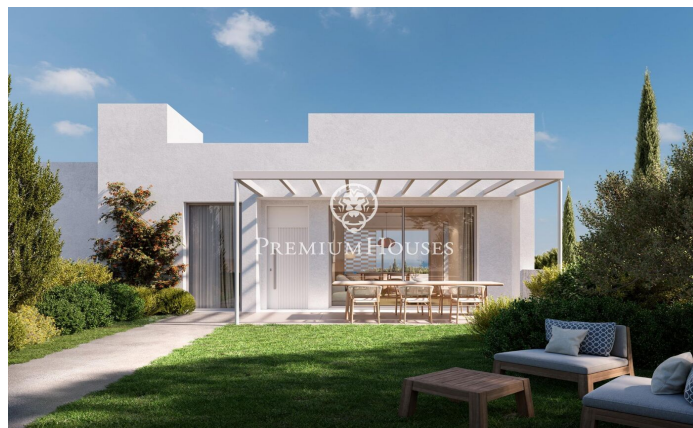
### Caldes d'Estrac / Maresme/Barcelona Costa Norte

Discover Residencial Morgana: an exclusive complex of eight newly built semi-detached homes, designed according to the principles of sustainability and circular economy that define Circular Homes' commitment. Located in the highest and most privileged area of the La Indiana residential complex, these homes have been carefully designed to offer the best of Mediterranean style in a unique natural setting. Thanks to their staggered layout, each home enjoys stunning sea views from every room, as well as excellent natural light and optimal ventilation, guaranteed by their triple orientation. The interiors are adapted to different lifestyles, with floor areas ranging from 250 to 260 m<sup>2</sup>. The homes offer spacious living areas and the possibility of choosing between 4 or 5 bedrooms and 3 or 4 bathrooms, responding to the needs of each family. Outside, each home has a private garden and large terraces, ideal for relaxing and enjoying the surroundings. They also include a closed garage, providing comfort and security for residents. The residential complex is completed with a communal swimming pool surrounded by gardens on different levels, creating an exclusive, intimate and relaxing atmosphere. With architecture that blends Catalan tradition with a contemporary and sustainable approach, R...

**€1,028,970**

252 m<sup>2</sup>  
4 Bedrooms  
3 Bathrooms  
265 m<sup>2</sup> plot  
Sea views  
Parking



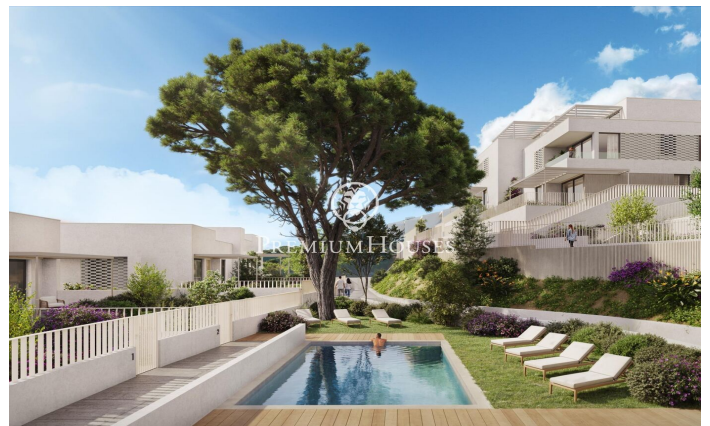
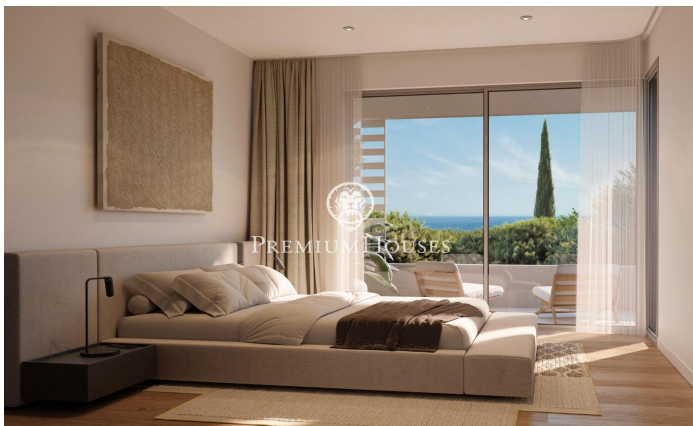
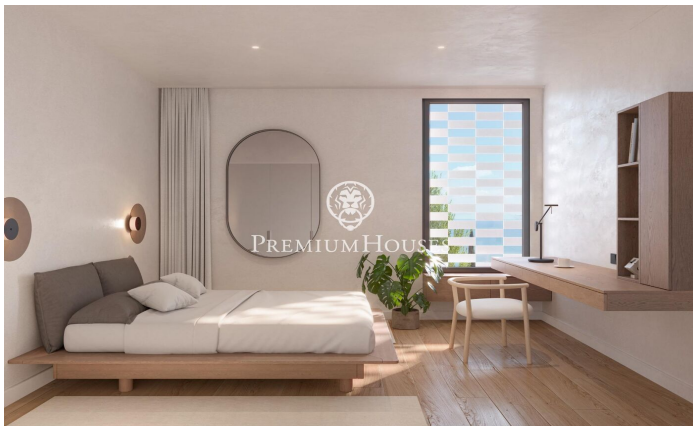






**PREMIUMHOUSES**  
Excellence in Real Estate

Avda. Maresme, 143 Mataró  
Tel: +34 93 798 88 99







PREMIUMHOUSES is a brand of the company PREMIUMHOUSES, S.L. which is a company of the group of companies PREMIUMHOUSES, S.L. and its subsidiaries. The information provided is for informational purposes only and does not constitute an offer or a contract. The information is subject to change without notice. The information is provided in Spanish and may not be accurate in other languages. The information is provided in Spanish and may not be accurate in other languages. The information is provided in Spanish and may not be accurate in other languages.



PLANTA SÓTANO



PLANTA BAJA



PLANTA PRIMERA

#### VIVIENDA A-1

SUPERFICIES	UPL	CONSTRUCCIÓN
Superficie vendida	90,45 m <sup>2</sup>	20,34 m <sup>2</sup>
Plantilla	17,25 m <sup>2</sup>	8,31 m <sup>2</sup>
Plantilla exterior	10,00 m <sup>2</sup>	10,00 m <sup>2</sup>
Plantilla interior	10,00 m <sup>2</sup>	10,00 m <sup>2</sup>
Superficie terreno	8,75 m <sup>2</sup>	8,75 m <sup>2</sup>
Superficie aprovechable	20,07 m <sup>2</sup>	20,07 m <sup>2</sup>
SUPERFICIE TOTAL	220,27 m <sup>2</sup>	270,69 m <sup>2</sup>

Superficie vendida	90,45 m <sup>2</sup>
Superficie parcela	112,80 m <sup>2</sup>
Superficie Total disponible	203,25 m <sup>2</sup>

LOCALIZACIÓN  
Calle de la Compañía y calle Francisco



**Barcelona Coast, the best place to live**  
Over 2,500 hours of sun per year

