



Townhouse in Cabrils area Ca l'Estrany

Ref: PH103107



Cabrils / Maresme/Barcelona Costa Norte

This property located in the area of Cal Estrany in Cabrils offers a spacious and comfortable living space, with a total area of 316 m2 and an excellent distribution. The first floor has a very spacious and bright living-dining room, thanks to its large windows to access the garden, with the kitchen, well equipped and with enough space to prepare delicious meals. On the second floor there are 4 bedrooms in total, including 2 double bedrooms, 1 single bedroom and 1 double bedroom en suite with full bathroom. This layout provides privacy and comfort for the whole family. The upper floor houses an attic that offers a versatile space, ideal for adapting according to individual needs, and has an additional toilet for convenience. In the basement there is a very spacious parking area, which provides a convenient solution for parking vehicles and offers additional storage space. The house has several extras that increase its attractiveness such as built-in closets, fireplace and heating system, among others. In addition, it is located in a community with communal pool, perfect to enjoy on summer days. Located in Cabrils a few km from the beach. This property offers a privileged location close to services such as buses, medical centers, parks and more. In addition, it includes garage, wh...

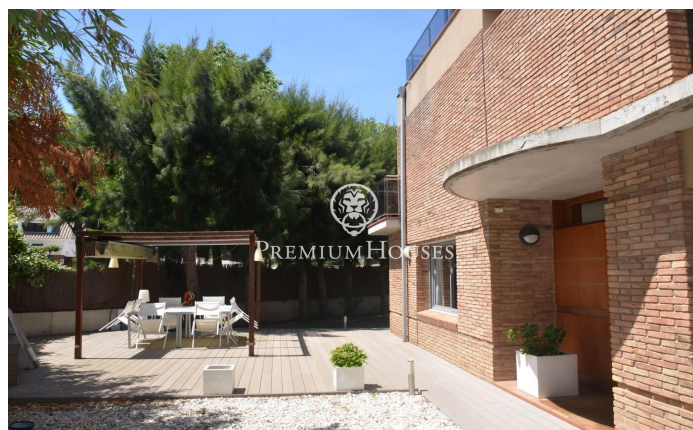
€2,400

316 m²
4 Bedrooms
2 Bathrooms
Pool
Heating
Mountain views
Storage
Fireplace
Parking
Terrace
Balcony
Built in closets



PREMIUMHOUSES
Excellence in Real Estate

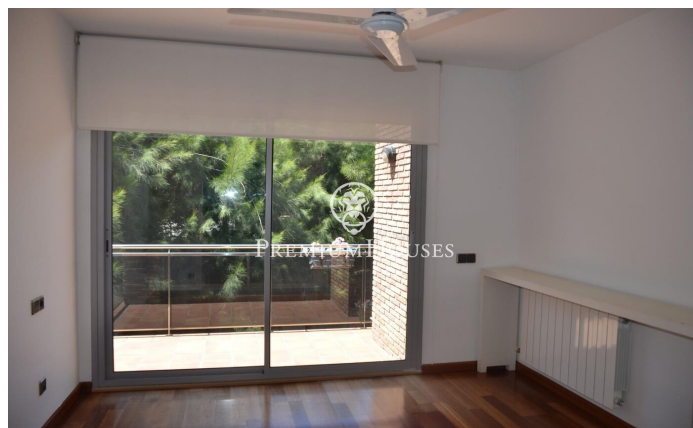
Avda. Maresme, 143 Mataró
Tel: +34 93 798 88 99





PREMIUMHOUSES
Excellence in Real Estate

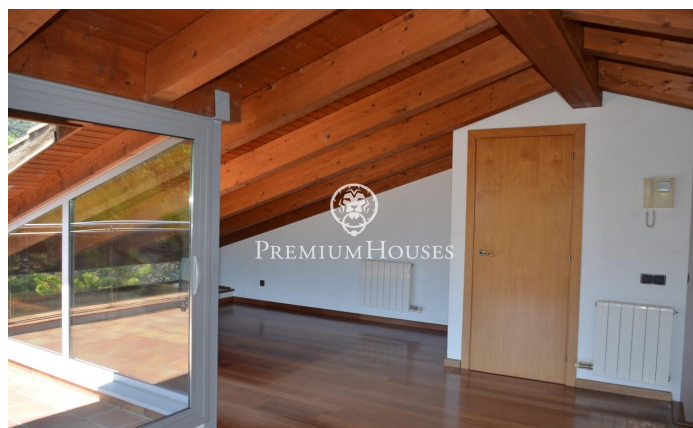
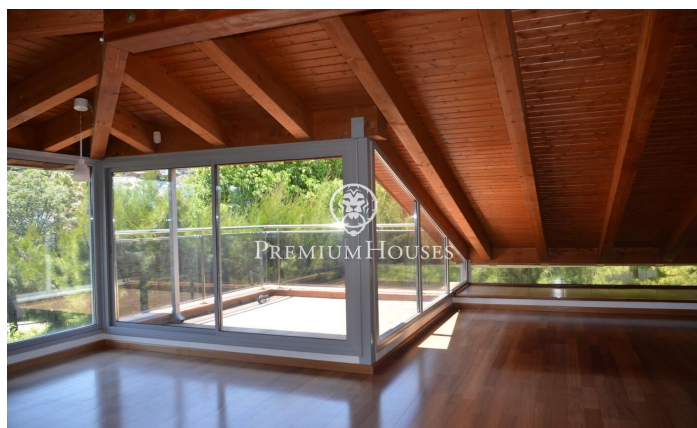
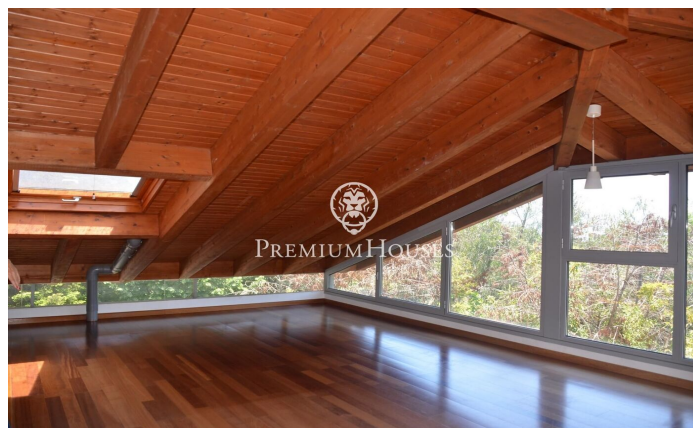
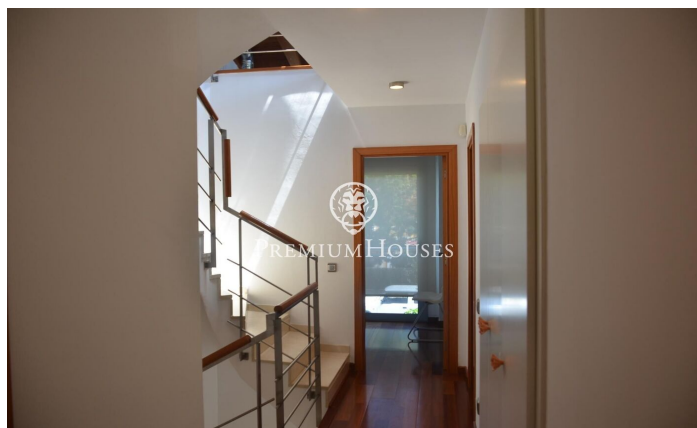
Avda. Maresme, 143 Mataró
Tel: +34 93 798 88 99





PREMIUMHOUSES
Excellence in Real Estate

Avda. Maresme, 143 Mataró
Tel: +34 93 798 88 99



Contact us for more information or to arrange a viewing

Tel: +34 93 798 88 99

info@premiumhouses.com

www.premiumhouses.es