



Charming flat with great potential in a 1900s building

Ref: P-017230

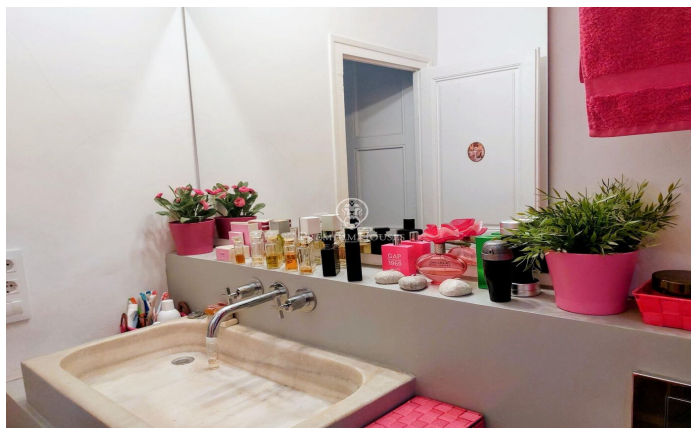
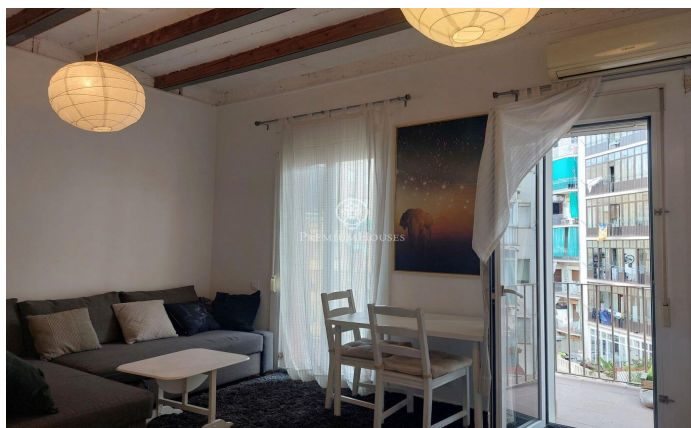
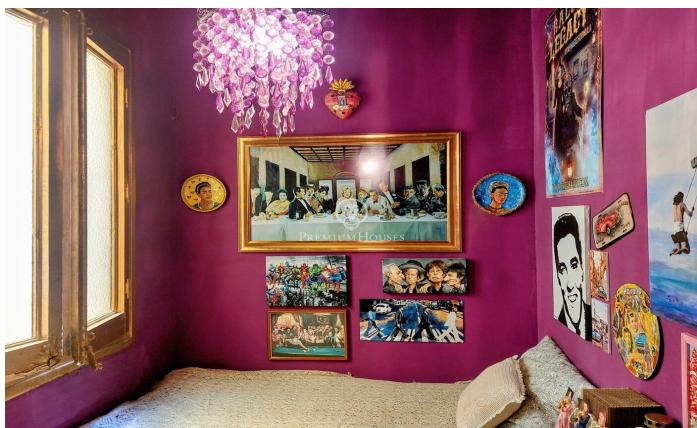
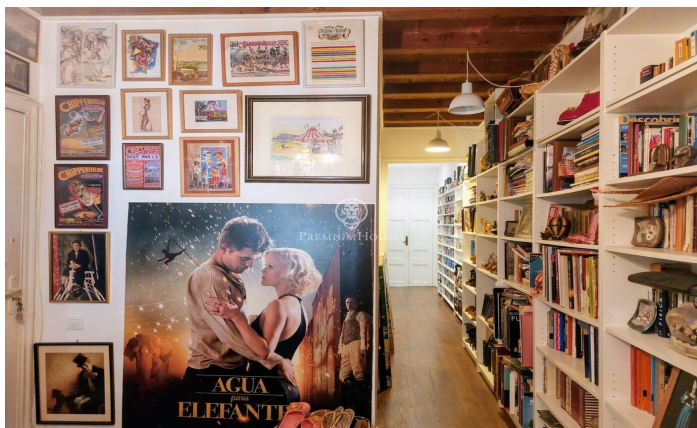


El Poble-sec / Barcelona Ciudad

We present this 90 m² property, located on the third floor of a classic early 20th-century building on the iconic Carrer Parlament, one of the most sought-after streets in the Sant Antoni neighbourhood. The flat retains original features such as the Catalan vaulted ceiling, adding character and authenticity to the space. Bright and well laid out, the property offers a functional distribution and a solid structure, that allows you to move in immediately or carry out a customised renovation according to the buyer's needs. Thanks to its cross ventilation and south-west orientation, it enjoys natural light throughout the day and optimal air circulation. It has a balcony on both sides, ensuring a pleasant connection with the outside and multiple possibilities for use. The location is one of its great attractions: Sant Antoni is a dynamic neighbourhood, full of life and perfectly connected to local shops, excellent restaurants and the renovated Mercat de Sant Antoni, just a few minutes' walk away. An ideal opportunity both as a primary residence and for those seeking an investment with potential, in a historic property located in one of the most sought-after areas of Barcelona.

€750,000

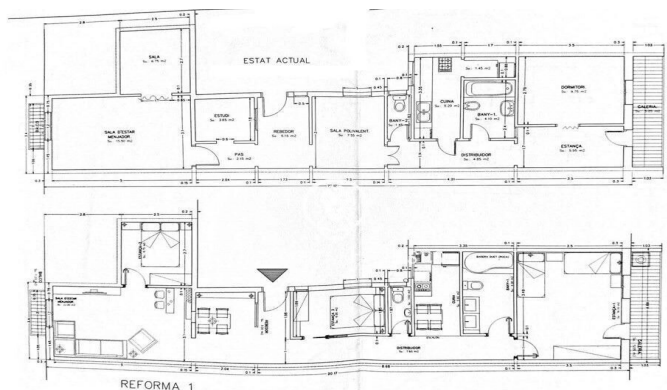
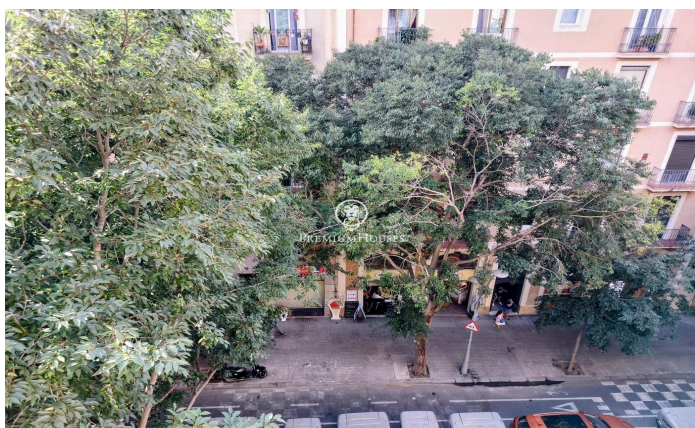
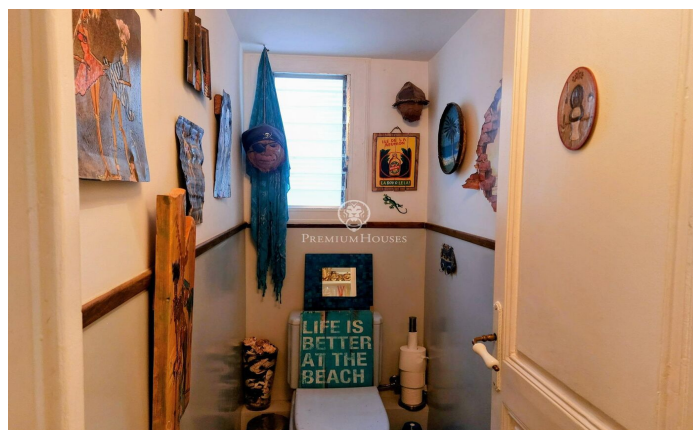
90 m²
3 Bedrooms
1 Bathroom
A/C
Storage
Lift
Balcony





PREMIUMHOUSES
Excellence in Real Estate

Avda. Pau Casals, 5 Barcelona
Tel: +34 93 200 30 79



Contact us for more information or to arrange a viewing

Tel: +34 93 200 30 79

info@premiumhouses.com

www.premiumhouses.es

