

House for sale in the exclusive “Can Teixidó” residential area with views of the sea and the Barcelona skyline

Ref: PH100570

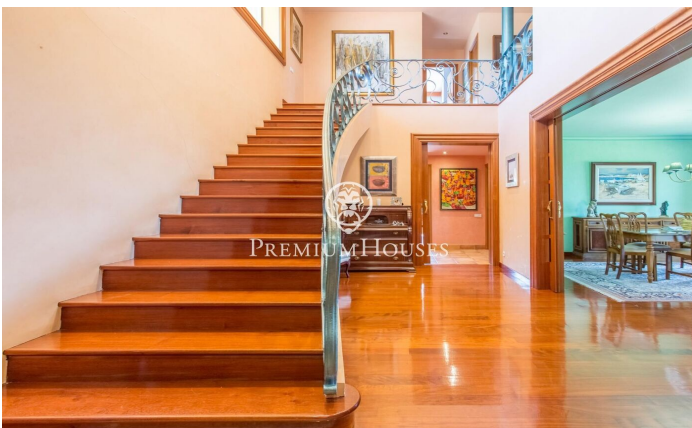
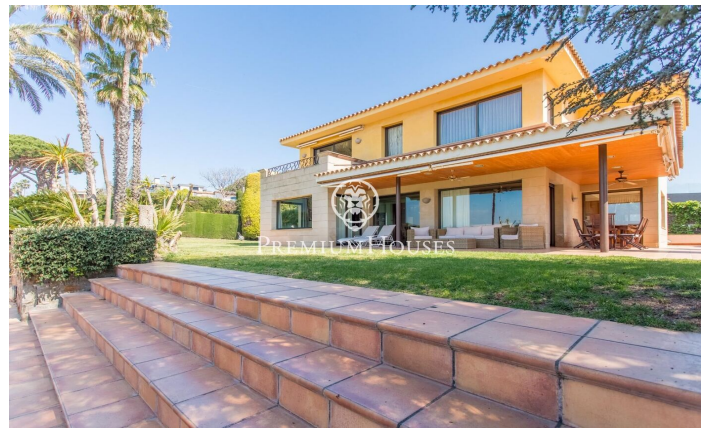


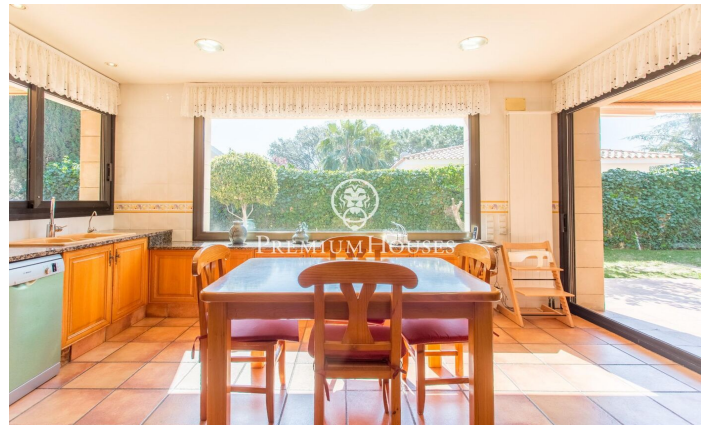
Alella / Maresme/Barcelona Costa Norte

This magnificent property is located in one of the best residential areas of Maresme, Can Teixidó. Just 20 minutes from Barcelona, 5 minutes walking to the beach and 10 min. by car to Hamelin International School. The house is built on a completely flat plot of 1,400m² with private garden and pool. Upon entering the property, we can observe the excellent state of the garden and the large trees it has. With just entering the house we can enjoy a large hall at two heights with a large staircase with custom wrought iron railing. The main floor has a nice dining room with large windows that open to the garden and through which a lot of light comes in, it also has a smaller lounge with a fireplace that is great for winter nights from which you can see beautiful sunsets with views to the sea and to the Skyline of Barcelona. The large fully equipped office kitchen with a table for 8 people and connected to the garden through large sliding doors that take us to the summer outdoor dining room and to the porch. In addition, this floor has a double room with full bathroom ideal for guests. Annex to the kitchen has a very large laundry area and service room with bathroom included and a toilet. On the first floor we find the suite with large windows overlooking the sea and it has a large ...

€1,980,000

532 m²
5 Bedrooms
5 Bathrooms
1,204 m² plot
Pool
A/C
Heating
Sea views
Storage
Phone
Fireplace
Security
Parking
Terrace
Balcony
Built in closets







Contact us for more information or to arrange a viewing

Tel: +34 93 798 88 99

info@premiumhouses.com

www.premiumhouses.es